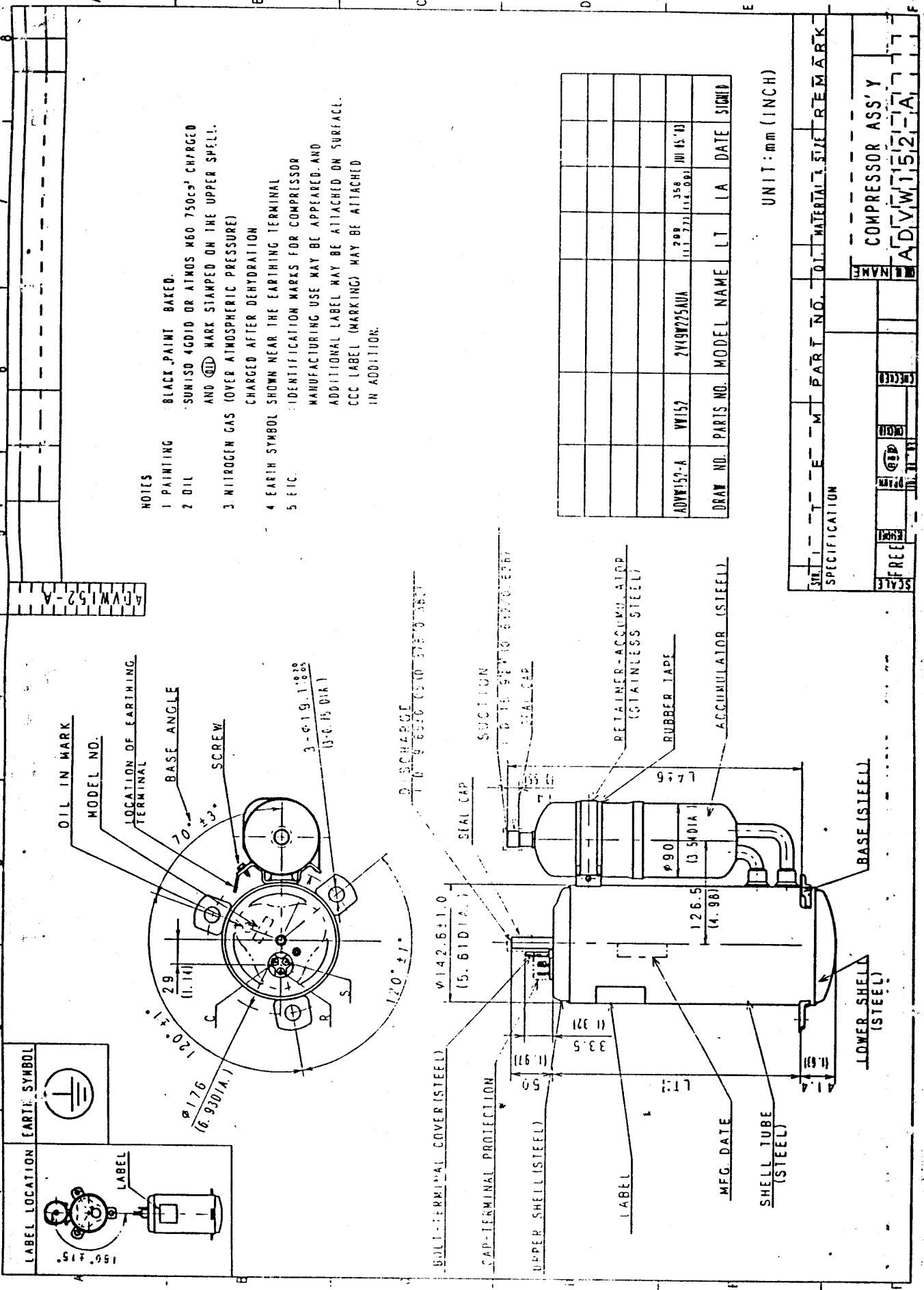


74



- NOTES
- 1 PAINTING BLACK PAINT BAKED.
 - 2 OIL SONISD 4GD10 OR ATMOS M60 750CS¹ CHARGED AND (C) MARK STAMPED ON THE UPPER SHELL.
 - 3 NITROGEN GAS (OVER ATMOSPHERIC PRESSURE) CHARGED AFTER DEHYDRATION
 - 4 EARTH SYMBOL SHOWN NEAR THE EARTHING TERMINAL
 - 5 ETC. IDENTIFICATION MARKS FOR COMPRESSOR MANUFACTURING USE MAY BE APPEARED. AND ADDITIONAL LABEL MAY BE ATTACHED ON SURFACE. CCC LABEL (MARKING) MAY BE ATTACHED IN ADDITION.

DRAW NO.	PARTS NO.	MODEL NAME	LT	IA	DATE	SIGN'D
ADV152-A	WV152	2Y49225AUA	209	358	JUN 15 '10	
			11.1.777	11.4.091		

UNIT:mm (INCH)

ADV152-A

SPECIFICATION

ITEM PART NO. QTY MATERIAL SIZE REMARK

COMPRESSOR ASS'Y

ADV152-A