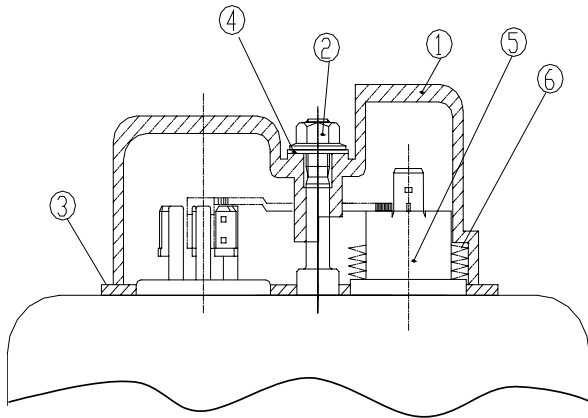
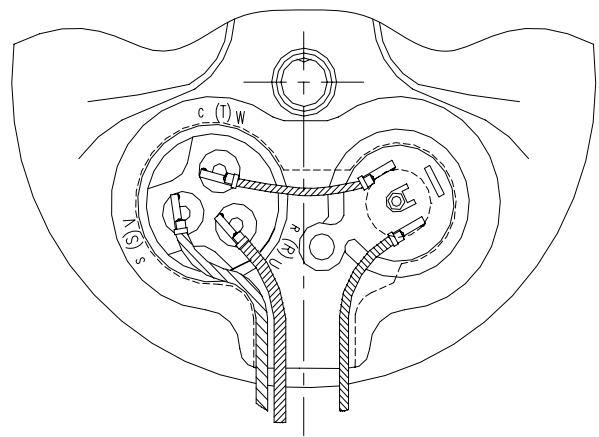
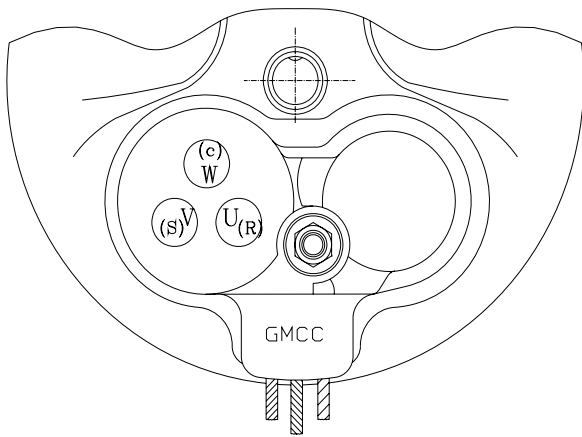


# ELE COMPONENTS



⑥	OL SPRING	1K14460410
⑤	OVERLOAD PROTECTOR	1K14920*Gr
④	NUT PACKING	1K14721010
③	TERMINAL PACKING	1K14720913
②	TERMINAL NUT	1K14300711
①	TERMINAL COVER	1K14722610
PART NO	TITLE	DRAWN NO



## NOTES

Tightening torque of terminal nut:  $1.2 \pm 0.2 \text{ Nm}$