

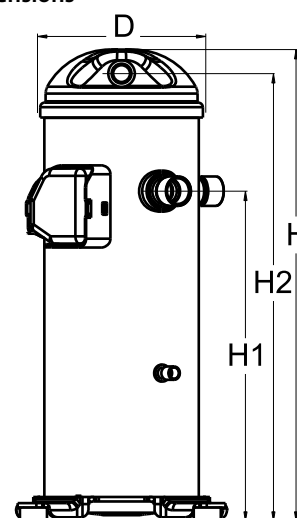
Datasheets

Danfoss scroll compressors **H series**



General Characteristics

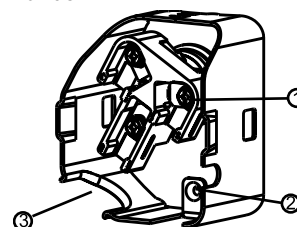
Model number (on compressor nameplate)		HCM094T4LC2
Code number for Singlepack*		120U0591
Code number for Industrial pack**		120U0588
Drawing number		0SR4103B-3
Suction and discharge connections		Brazed
Suction connection		1-1/8" ODF
Discharge connection		7/8" ODF
Oil sight glass		None
Oil equalisation connection		None
Oil drain connection		None
LP gauge port		None
IPR valve		None
Swept volume		126,02 cm ³ /rev
Displacement @ Nominal speed		21.9 m ³ /h @ 2900 rpm - 26.5 m ³ /h @ 3500 rpm
Net weight		44 kg
Oil charge		2,66 litre, Alkylbenzene - -
Maximum system test pressure Low Side / High side		- bar(g) / - bar(g)
Maximum differential test pressure		- bar
Maximum number of starts per hour		-
Refrigerant charge limit		7,26 kg
Approved refrigerants		R22

Dimensions


D=184 mm
H=536 mm
H1=369 mm
H2=509 mm
H3=- mm

Electrical Characteristics

Nominal voltage	380-415V/3/50Hz - 460V/3/60Hz
Voltage range	342-457 V @ 50Hz - 414-506 V @ 60Hz
Winding resistance between phases 1-2 +/- 7% at 25°C	1.480 Ω
Winding resistance between phases 1-3 +/- 7% at 25°C	1.480 Ω
Winding resistance between phases 2-3 +/- 7% at 25°C	1.480 Ω
Rated Load Amps (RLA)	13.5 A
Maximum Continuous Current (MCC)	21 A
Locked Rotor Amps (LRA)	95 A
Motor protection	Internal overload protector

Terminal box


IP22

- 1: Screw connectors 10-32 UNF x 9.5
- 2: Earth connection
- 3: Power cable passage

Recommended Installation torques

Oil sight glass	52,5 Nm
Power connections / Earth connection	3 Nm / 2 Nm

Parts shipped with compressor

Mounting kit with grommets and sleeves
Initial oil charge
Installation instructions

Approvals : CE certified, UL certified (file SA11565), -

*Singlepack: Compressor in cardboard box

**Industrial pack: 12 or 16 Unboxed compressors on pallet

Rotolock accessories, suction side

Code no.

Solder sleeve, P02 (1-3/4" Rotolock, 1-1/8" ODF)	8153004
Angle adapter, C02 (1-3/4" Rotolock, 1-1/8" ODF)	8168005
Rotolock valve, V02 (1-3/4" Rotolock, 1-1/8" ODF)	8168028
Gasket, 1-3/4"	8156132

Rotolock accessories, discharge side

Code no.

Rotolock valve, V05 (1-1/4" Rotolock, 7/8" ODF)	8168030
Gasket, 1-3/4"	8156132

Rotolock accessories, sets

Code no.

Solder sleeve adapter set (1-3/4" Rotolock, 1-1/8" ODF), (1-1/4" Rotolock, 7/8" ODF)	120Z0125
Valve set, V02(1"3/4~1"1/8), V05(1"1/4~7/8")	120Z0403
Gasket set, 1", 1-1/4", 1-3/4", OSG gaskets black & white	8156009

Oil / lubricants

Code no.

Crankcase heaters

Code no.

Belt type crankcase heater, 65 W, 230 V, CE mark, UL	120Z0059
Belt type crankcase heater, 65 W, 400 V, CE mark, UL	120Z0060
Belt type crankcase heater, 70 W, 240 V, CE mark, UL	120Z5040
Belt type crankcase heater, 70 W, 240 V, CE mark, UL	120Z5040

Miscellaneous accessories

Code no.

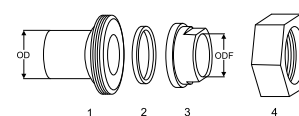
Acoustic hood	120Z5045
Discharge thermostat kit	7750009

Spare parts

Code no.

Mounting kit for 1 scroll compressor including 4 grommets, 4 sleeves, 4 bolts, 4 washers	120Z5005
Mounting kit, including 1 bolt, 1 sleeve, 1 washer	120Z5031

Solder sleeve adapter set



- 1: Rotolock adapter (Suc & Dis)
- 2: Gasket (Suc & Dis)
- 3: Solder sleeve (Suc & Dis)
- 4: Rotolock nut (Suc & Dis)

Performance data at 50 Hz, EN 12900 rating conditions

R22

Cond. temp. in °C (tc)	Evaporating temperature in °C (to)							
	-25	-20	-15	-10	-5	0	5	10

Cooling capacity in W

30	8 237	9 616	11 648	14 293	17 507	21 249	25 476	30 146	-
35	7 728	9 093	11 071	13 621	16 701	20 269	24 282	28 697	-
40	7 077	8 460	10 417	12 906	15 885	19 312	23 145	27 340	-
45	-	7 672	9 641	12 102	15 013	18 332	22 017	26 026	-
50	-	-	8 697	11 161	14 037	17 281	20 851	24 707	-
55	-	-	-	10 041	12 911	16 111	19 600	23 334	-
60	-	-	-	-	11 592	14 779	18 215	21 858	-
65	-	-	-	-	-	13 240	16 652	20 234	-

Power input in W

30	4 278	4 316	4 337	4 334	4 302	4 234	4 126	3 972	-
35	4 773	4 783	4 788	4 783	4 761	4 717	4 644	4 537	-
40	5 324	5 296	5 276	5 257	5 235	5 202	5 154	5 084	-
45	-	5 879	5 823	5 781	5 747	5 716	5 682	5 639	-
50	-	-	6 455	6 379	6 324	6 284	6 253	6 225	-
55	-	-	-	7 077	6 989	6 929	6 891	6 869	-
60	-	-	-	-	7 769	7 679	7 623	7 595	-
65	-	-	-	-	-	8 556	8 472	8 429	-

Current consumption in A

30	8.15	8.31	8.41	8.48	8.50	8.50	8.47	8.43	-
35	8.79	8.90	8.97	9.01	9.03	9.03	9.01	9.00	-
40	9.66	9.73	9.76	9.77	9.78	9.77	9.76	9.77	-
45	-	10.80	10.79	10.77	10.75	10.74	10.74	10.76	-
50	-	-	12.06	12.01	11.97	11.95	11.95	11.98	-
55	-	-	-	13.51	13.44	13.40	13.40	13.44	-
60	-	-	-	-	15.16	15.11	15.10	15.14	-
65	-	-	-	-	-	17.08	17.06	17.10	-

Mass flow in kg/h

30	179	207	247	300	363	435	516	605	-
35	175	204	245	297	359	431	510	596	-
40	166	197	240	293	356	427	505	590	-
45	-	187	232	287	351	422	501	586	-
50	-	-	220	277	343	416	496	581	-
55	-	-	-	263	331	407	489	575	-
60	-	-	-	-	315	394	478	567	-
65	-	-	-	-	-	376	463	555	-

Coefficient of performance (C.O.P.)

30	1.93	2.23	2.69	3.30	4.07	5.02	6.17	7.59	-
35	1.62	1.90	2.31	2.85	3.51	4.30	5.23	6.33	-
40	1.33	1.60	1.97	2.46	3.03	3.71	4.49	5.38	-
45	-	1.30	1.66	2.09	2.61	3.21	3.87	4.62	-
50	-	-	1.35	1.75	2.22	2.75	3.33	3.97	-
55	-	-	-	1.42	1.85	2.33	2.84	3.40	-
60	-	-	-	-	1.49	1.92	2.39	2.88	-
65	-	-	-	-	-	1.55	1.97	2.40	-

Nominal performance at to = 5 °C, tc = 50 °C

Cooling capacity	20 851	W
Power input	6 253	W
Current consumption	11.95	A
Mass flow	496	kg/h
C.O.P.	3.33	

Pressure switch settings

Maximum HP switch setting	29	bar(g)
Minimum LP switch setting	0.5	bar(g)
LP pump down setting	1.3	bar(g)

Sound power data

Sound power level	74	dB(A)
With acoustic hood	69	dB(A)

to: Evaporating temperature at dew point

tc: Condensing temperature at dew point

Rating conditions : Superheat = 10 K , Subcooling = 0 K

All performance data +/- 5%

Danfoss can accept no responsibility for possible errors in catalogues, brochures and other printed material. Danfoss reserves the right to alter its products without notice. This also applies to products already on order provided that such alternations can be made without subsequential changes being necessary in specifications already agreed. All trademarks in this material are property of the respective companies. Danfoss and the Danfoss logotype are trademarks of Danfoss A/S. All rights reserved.

Performance data at 50 Hz, ARI rating conditions

R22

Cond. temp. in °C (tc)	Evaporating temperature in °C (to)							
	-25	-20	-15	-10	-5	0	5	10

Cooling capacity in W

30	8 749	10 204	12 351	15 144	18 536	22 483	26 937	31 853	-
35	8 238	9 683	11 780	14 481	17 741	21 515	25 755	30 417	-
40	7 573	9 045	11 127	13 773	16 937	20 574	24 637	29 081	-
45	-	8 240	10 343	12 970	16 074	19 610	23 532	27 793	-
50	-	-	9 378	12 021	15 102	18 573	22 389	26 504	-
55	-	-	-	10 877	13 970	17 412	21 159	25 164	-
60	-	-	-	-	12 627	16 077	19 791	23 722	-
65	-	-	-	-	-	14 518	18 235	22 128	-

Power input in W

30	4 278	4 316	4 337	4 334	4 302	4 234	4 126	3 972	-
35	4 773	4 783	4 788	4 783	4 761	4 717	4 644	4 537	-
40	5 324	5 296	5 276	5 257	5 235	5 202	5 154	5 084	-
45	-	5 879	5 823	5 781	5 747	5 716	5 682	5 639	-
50	-	-	6 455	6 379	6 324	6 284	6 253	6 225	-
55	-	-	-	7 077	6 989	6 929	6 891	6 869	-
60	-	-	-	-	7 769	7 679	7 623	7 595	-
65	-	-	-	-	-	8 556	8 472	8 429	-

Current consumption in A

30	8.15	8.31	8.41	8.48	8.50	8.50	8.47	8.43	-
35	8.79	8.90	8.97	9.01	9.03	9.03	9.01	9.00	-
40	9.66	9.73	9.76	9.77	9.78	9.77	9.76	9.77	-
45	-	10.80	10.79	10.77	10.75	10.74	10.74	10.76	-
50	-	-	12.06	12.01	11.97	11.95	11.95	11.98	-
55	-	-	-	13.51	13.44	13.40	13.40	13.44	-
60	-	-	-	-	15.16	15.11	15.10	15.14	-
65	-	-	-	-	-	17.08	17.06	17.10	-

Mass flow in kg/h

30	178	206	246	298	361	433	513	601	-
35	174	202	243	295	357	428	507	593	-
40	166	196	239	291	354	425	503	587	-
45	-	186	231	285	349	420	498	582	-
50	-	-	218	276	341	414	493	578	-
55	-	-	-	261	330	405	486	572	-
60	-	-	-	-	313	392	476	564	-
65	-	-	-	-	-	374	461	552	-

Coefficient of performance (C.O.P.)

30	2.04	2.36	2.85	3.49	4.31	5.31	6.53	8.02	-
35	1.73	2.02	2.46	3.03	3.73	4.56	5.55	6.70	-
40	1.42	1.71	2.11	2.62	3.24	3.95	4.78	5.72	-
45	-	1.40	1.78	2.24	2.80	3.43	4.14	4.93	-
50	-	-	1.45	1.88	2.39	2.96	3.58	4.26	-
55	-	-	-	1.54	2.00	2.51	3.07	3.66	-
60	-	-	-	-	1.63	2.09	2.60	3.12	-
65	-	-	-	-	-	1.70	2.15	2.63	-

Nominal performance at to = 7.2 °C, tc = 54.4 °C

Cooling capacity	23 050	W
Power input	6 799	W
Current consumption	13.22	A
Mass flow	524	kg/h
C.O.P.	3.39	

Pressure switch settings

Maximum HP switch setting	29	bar(g)
Minimum LP switch setting	0.5	bar(g)
LP pump down setting	1.3	bar(g)

Sound power data

Sound power level	74	dB(A)
With acoustic hood	69	dB(A)

to: Evaporating temperature at dew point

tc: Condensing temperature at dew point

Rating conditions : Superheat = 11.1 K , Subcooling = 8.3 K

All performance data +/- 5%

Danfoss can accept no responsibility for possible errors in catalogues, brochures and other printed material. Danfoss reserves the right to alter its products without notice. This also applies to products already on order provided that such alternations can be made without subsequential changes being necessary in specifications already agreed. All trademarks in this material are property of the respective companies. Danfoss and the Danfoss logotype are trademarks of Danfoss A/S. All rights reserved.

Performance data at 60 Hz, EN 12900 rating conditions

R22

Cond. temp. in °C (tc)	Evaporating temperature in °C (to)							
	-25	-20	-15	-10	-5	0	5	10

Cooling capacity in W

30	9 883	11 536	13 975	17 147	21 004	25 493	30 565	36 166	-
35	9 274	10 911	13 284	16 344	20 040	24 320	29 135	34 433	-
40	8 494	10 153	12 502	15 489	19 064	23 177	27 776	32 811	-
45	-	9 210	11 573	14 526	18 020	22 004	26 428	31 240	-
50	-	-	10 442	13 400	16 852	20 746	25 033	29 662	-
55	-	-	-	12 057	15 504	19 346	23 535	28 019	-
60	-	-	-	-	13 923	17 750	21 877	26 253	-
65	-	-	-	-	-	15 904	20 003	24 307	-

Power input in W

30	5 221	5 271	5 296	5 291	5 250	5 168	5 039	4 857	-
35	5 794	5 813	5 823	5 816	5 789	5 734	5 647	5 521	-
40	6 421	6 398	6 379	6 359	6 332	6 292	6 234	6 151	-
45	-	7 055	6 995	6 949	6 909	6 872	6 830	6 779	-
50	-	-	7 700	7 615	7 551	7 503	7 465	7 432	-
55	-	-	-	8 386	8 285	8 214	8 168	8 141	-
60	-	-	-	-	9 143	9 036	8 969	8 935	-
65	-	-	-	-	-	9 998	9 897	9 843	-

Current consumption in A

30	8.23	8.39	8.50	8.57	8.59	8.59	8.56	8.52	-
35	8.88	8.99	9.07	9.11	9.12	9.12	9.11	9.09	-
40	9.77	9.83	9.86	9.88	9.88	9.87	9.87	9.87	-
45	-	10.91	10.90	10.89	10.87	10.86	10.85	10.87	-
50	-	-	12.19	12.14	12.10	12.08	12.08	12.11	-
55	-	-	-	13.65	13.58	13.54	13.54	13.58	-
60	-	-	-	-	15.33	15.27	15.26	15.30	-
65	-	-	-	-	-	17.26	17.24	17.29	-

Mass flow in kg/h

30	215	248	297	360	435	522	619	726	-
35	209	244	294	356	431	517	612	716	-
40	200	237	288	352	427	512	607	708	-
45	-	225	278	344	421	507	601	703	-
50	-	-	264	333	412	500	595	697	-
55	-	-	-	315	398	489	587	690	-
60	-	-	-	-	378	473	574	681	-
65	-	-	-	-	-	451	557	667	-

Coefficient of performance (C.O.P.)

30	1.89	2.19	2.64	3.24	4.00	4.93	6.07	7.45	-
35	1.60	1.88	2.28	2.81	3.46	4.24	5.16	6.24	-
40	1.32	1.59	1.96	2.44	3.01	3.68	4.46	5.33	-
45	-	1.31	1.65	2.09	2.61	3.20	3.87	4.61	-
50	-	-	1.36	1.76	2.23	2.77	3.35	3.99	-
55	-	-	-	1.44	1.87	2.36	2.88	3.44	-
60	-	-	-	-	1.52	1.96	2.44	2.94	-
65	-	-	-	-	-	1.59	2.02	2.47	-

Nominal performance at to = 5 °C, tc = 50 °C

Cooling capacity	25 033	W
Power input	7 465	W
Current consumption	12.08	A
Mass flow	595	kg/h
C.O.P.	3.35	

Pressure switch settings

Maximum HP switch setting	29	bar(g)
Minimum LP switch setting	0.5	bar(g)
LP pump down setting	1.3	bar(g)

Sound power data

Sound power level	77	dB(A)
With acoustic hood	72	dB(A)

to: Evaporating temperature at dew point

tc: Condensing temperature at dew point

Rating conditions : Superheat = 10 K , Subcooling = 0 K

All performance data +/- 5%

Danfoss can accept no responsibility for possible errors in catalogues, brochures and other printed material. Danfoss reserves the right to alter its products without notice. This also applies to products already on order provided that such alternations can be made without subsequential changes being necessary in specifications already agreed. All trademarks in this material are property of the respective companies. Danfoss and the Danfoss logotype are trademarks of Danfoss A/S. All rights reserved.

Performance data at 60 Hz, ARI rating conditions
R22

Cond. temp. in °C (tc)	Evaporating temperature in °C (to)							
	-25	-20	-15	-10	-5	0	5	10

Cooling capacity in W

30	10 496	12 242	14 818	18 169	22 239	26 973	32 317	38 214	-
35	9 885	11 619	14 134	17 376	21 288	25 815	30 903	36 497	-
40	9 090	10 855	13 354	16 529	20 326	24 691	29 567	34 899	-
45	-	9 891	12 415	15 568	19 294	23 538	28 245	33 360	-
50	-	-	11 259	14 432	18 130	22 298	26 879	31 820	-
55	-	-	-	13 061	16 774	20 908	25 408	30 217	-
60	-	-	-	-	15 166	19 309	23 769	28 491	-
65	-	-	-	-	-	17 440	21 904	26 582	-

Power input in W

30	5 221	5 271	5 296	5 291	5 250	5 168	5 039	4 857	-
35	5 794	5 813	5 823	5 816	5 789	5 734	5 647	5 521	-
40	6 421	6 398	6 379	6 359	6 332	6 292	6 234	6 151	-
45	-	7 055	6 995	6 949	6 909	6 872	6 830	6 779	-
50	-	-	7 700	7 615	7 551	7 503	7 465	7 432	-
55	-	-	-	8 386	8 285	8 214	8 168	8 141	-
60	-	-	-	-	9 143	9 036	8 969	8 935	-
65	-	-	-	-	-	9 998	9 897	9 843	-

Current consumption in A

30	8.23	8.39	8.50	8.57	8.59	8.59	8.56	8.52	-
35	8.88	8.99	9.07	9.11	9.12	9.12	9.11	9.09	-
40	9.77	9.83	9.86	9.88	9.88	9.87	9.87	9.87	-
45	-	10.91	10.90	10.89	10.87	10.86	10.85	10.87	-
50	-	-	12.19	12.14	12.10	12.08	12.08	12.11	-
55	-	-	-	13.65	13.58	13.54	13.54	13.58	-
60	-	-	-	-	15.33	15.27	15.26	15.30	-
65	-	-	-	-	-	17.26	17.24	17.29	-

Mass flow in kg/h

30	214	247	295	358	433	519	616	721	-
35	208	243	292	354	429	514	609	711	-
40	199	236	286	350	425	509	603	704	-
45	-	223	277	342	419	504	598	699	-
50	-	-	262	331	410	497	592	693	-
55	-	-	-	314	396	486	584	686	-
60	-	-	-	-	376	471	571	677	-
65	-	-	-	-	-	449	554	663	-

Coefficient of performance (C.O.P.)

30	2.01	2.32	2.80	3.43	4.24	5.22	6.41	7.87	-
35	1.71	2.00	2.43	2.99	3.68	4.50	5.47	6.61	-
40	1.42	1.70	2.09	2.60	3.21	3.92	4.74	5.67	-
45	-	1.40	1.77	2.24	2.79	3.43	4.14	4.92	-
50	-	-	1.46	1.90	2.40	2.97	3.60	4.28	-
55	-	-	-	1.56	2.02	2.55	3.11	3.71	-
60	-	-	-	-	1.66	2.14	2.65	3.19	-
65	-	-	-	-	-	1.74	2.21	2.70	-

Nominal performance at to = 7.2 °C, tc = 54.4 °C

Cooling capacity	27 678	W
Power input	8 065	W
Current consumption	13.36	A
Mass flow	629	kg/h
C.O.P.	3.43	

Pressure switch settings

Maximum HP switch setting	29	bar(g)
Minimum LP switch setting	0.5	bar(g)
LP pump down setting	1.3	bar(g)

Sound power data

Sound power level	77	dB(A)
With acoustic hood	72	dB(A)

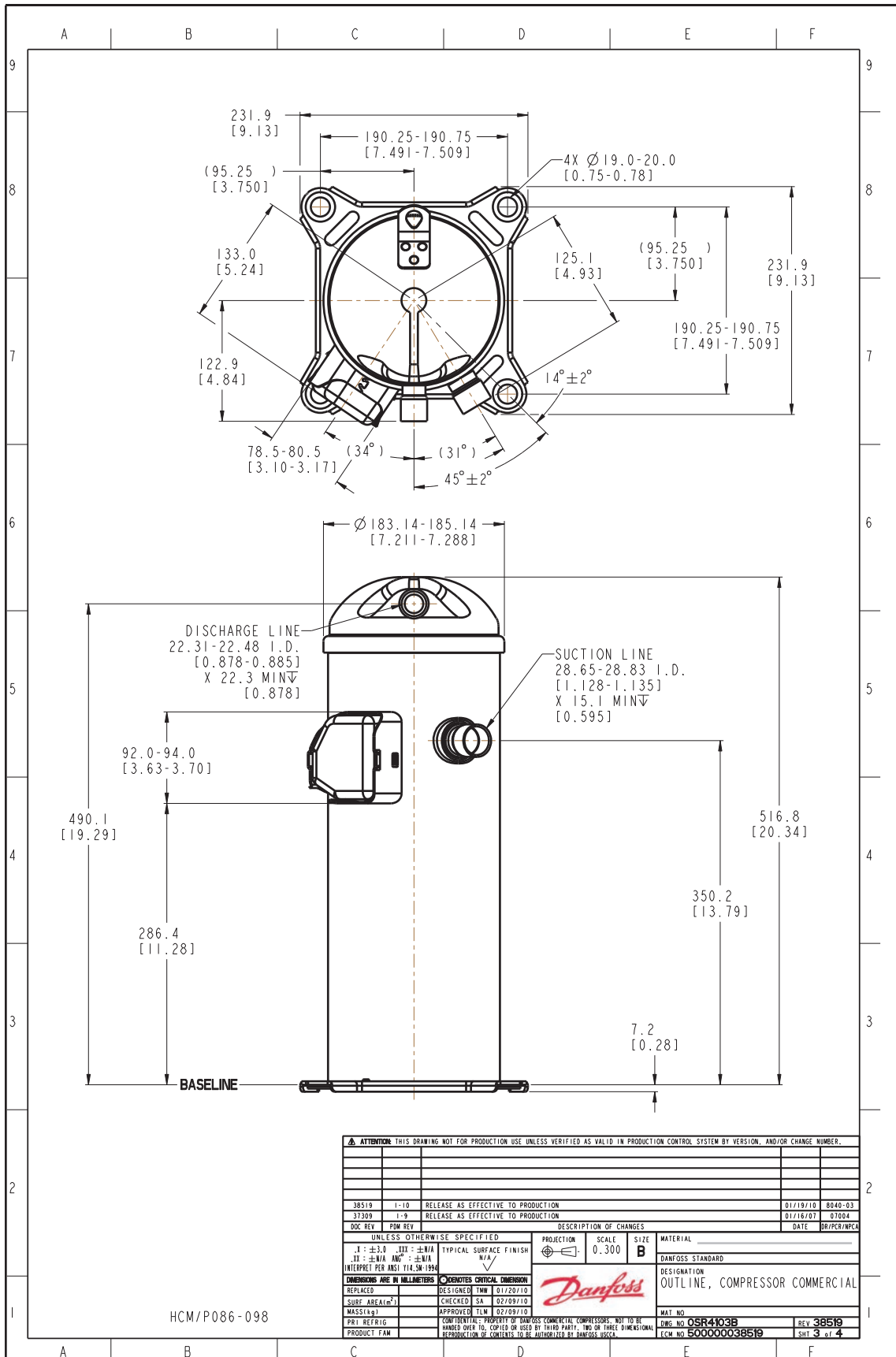
to: Evaporating temperature at dew point

tc: Condensing temperature at dew point

Rating conditions : Superheat = 11.1 K , Subcooling = 8.3 K

All performance data +/- 5%

Danfoss can accept no responsibility for possible errors in catalogues, brochures and other printed material. Danfoss reserves the right to alter its products without notice. This also applies to products already on order provided that such alternations can be made without subsequential changes being necessary in specifications already agreed. All trademarks in this material are property of the respective companies. Danfoss and the Danfoss logotype are trademarks of Danfoss A/S. All rights reserved.



ATTENTION: THIS DRAWING NOT FOR PRODUCTION USE UNLESS VERIFIED AS VALID IN PRODUCTION CONTROL SYSTEM BY VERSION, AND/OR CHANGE NUMBER.

DOC REV	POW REV	DESCRIPTION OF CHANGES	DATE	DR/PR/MP/CA
38519	1-10	RELEASE AS EFFECTIVE TO PRODUCTION	01/19/10	8040-03
37309	1-9	RELEASE AS EFFECTIVE TO PRODUCTION	01/16/07	07004

UNLESS OTHERWISE SPECIFIED:		PROJECTION	SCALE	SIZE	MATERIAL
1:±0.10	1:±0.10	1:±0.10	0.300	B	DANFOSS STANDARD
II:±0.10	II:±0.10	II:±0.10			
INTERPRET PER ANSI Y14.5M-1994		TYPICAL SURFACE FINISH		DESIGNATION	
DIMENSIONS ARE IN MILLIMETERS		DENOTES CRITICAL DIMENSION		OUTLINE, COMPRESSOR COMMERCIAL	
REPLACED	DESIGNED TMW	01/20/10	DANFLOSS		
SURF. AREA(m²)	CHECKED SA	02/09/10			
MASS(kg)	APPROVED OF TLM	02/09/10			
PRODUCT FAM	CONFIDENTIAL: PROPERTY OF DANFOSS COMMERCIAL COMPRESSORS. NOT TO BE HANDED OVER TO, COPIED OR USED BY THIRD PARTY. TWO OR THREE DIMENSIONAL REPRODUCTION OF CONTENTS TO BE AUTHORIZED BY DANFOSS A/S.		MATERIAL NO. OSR4103B		
			REV 38519		
			ECM NO. 500000038519		
			SHT. 3 of 4		

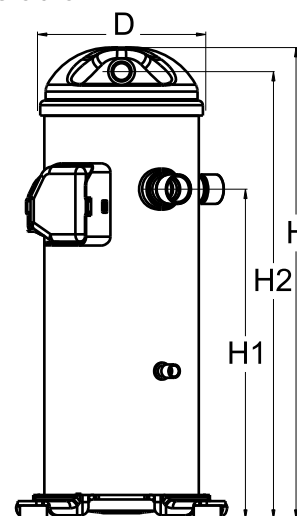
HCM/P086-098

Danfoss can accept no responsibility for possible errors in catalogues, brochures and other printed material. Danfoss reserves the right to alter its products without notice. This also applies to products already on order provided that such alternations can be made without consequential changes being necessary in specifications already agreed. All trademarks in this material are property of the respective companies. Danfoss, the Danfoss logotype and Maneurop are trademarks of Danfoss A/S. All rights reserved.

General Characteristics

Model number (on compressor nameplate)	HCM094T4LC6	
Code number for Singlepack*	120U0581	
Code number for Industrial pack**	120U0578	
Drawing number	0SR4103B-3	
Suction and discharge connections	Brazed	
Suction connection	1-1/8" ODF	
Discharge connection	7/8" ODF	
Oil sight glass	None	
Oil equalisation connection	None	
Oil drain connection	None	
LP gauge port	None	
IPR valve	None	
Swept volume	126,02 cm ³ /rev	
Displacement @ Nominal speed	21.9 m ³ /h @ 2900 rpm - 26.5 m ³ /h @ 3500 rpm	
Net weight	44 kg	
Oil charge	2,66 litre, Alkylbenzene - -	
Maximum system test pressure Low Side / High side	- bar(g) / - bar(g)	
Maximum differential test pressure	- bar	
Maximum number of starts per hour	-	
Refrigerant charge limit	7,26 kg	
Approved refrigerants	R22	

Dimensions

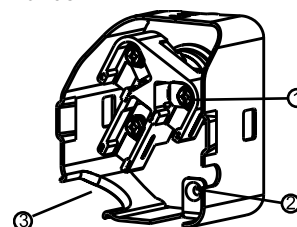


D=184 mm
H=536 mm
H1=369 mm
H2=509 mm
H3=- mm

Electrical Characteristics

Nominal voltage	380-415V/3/50Hz - 460V/3/60Hz	
Voltage range	342-457 V @ 50Hz - 414-506 V @ 60Hz	
Winding resistance between phases 1-2 +/- 7% at 25°C	1.480 Ω	
Winding resistance between phases 1-3 +/- 7% at 25°C	1.480 Ω	
Winding resistance between phases 2-3 +/- 7% at 25°C	1.480 Ω	
Rated Load Amps (RLA)	13.5 A	
Maximum Continuous Current (MCC)	21 A	
Locked Rotor Amps (LRA)	95 A	
Motor protection	Internal overload protector	

Terminal box



IP22

- 1: Screw connectors 10-32 UNF x 9.5
- 2: Earth connection
- 3: Power cable passage

Recommended Installation torques

Oil sight glass	52,5 Nm
Power connections / Earth connection	3 Nm / 2 Nm

Parts shipped with compressor

Mounting kit with grommets and sleeves
Initial oil charge
Installation instructions

Approvals : CE certified, UL certified (file SA11565), -

*Singlepack: Compressor in cardboard box

**Industrial pack: 12 or 16 Unboxed compressors on pallet

Rotolock accessories, suction side

Code no.

Solder sleeve, P02 (1-3/4" Rotolock, 1-1/8" ODF)	8153004
Angle adapter, C02 (1-3/4" Rotolock, 1-1/8" ODF)	8168005
Rotolock valve, V02 (1-3/4" Rotolock, 1-1/8" ODF)	8168028
Gasket, 1-3/4"	8156132

Rotolock accessories, discharge side

Code no.

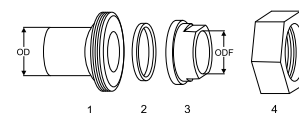
Rotolock valve, V05 (1-1/4" Rotolock, 7/8" ODF)	8168030
Gasket, 1-3/4"	8156132

Rotolock accessories, sets

Code no.

Solder sleeve adapter set (1-3/4" Rotolock, 1-1/8" ODF), (1-1/4" Rotolock, 7/8" ODF)	120Z0125
Valve set, V02(1"3/4~1"1/8), V05(1"1/4~7/8")	120Z0403
Gasket set, 1", 1-1/4", 1-3/4", OSG gaskets black & white	8156009

Solder sleeve adapter set



- 1: Rotolock adapter (Suc & Dis)
- 2: Gasket (Suc & Dis)
- 3: Solder sleeve (Suc & Dis)
- 4: Rotolock nut (Suc & Dis)

Oil / lubricants

Code no.

Crankcase heaters

Code no.

Belt type crankcase heater, 65 W, 230 V, CE mark, UL	120Z0059
Belt type crankcase heater, 65 W, 400 V, CE mark, UL	120Z0060
Belt type crankcase heater, 70 W, 240 V, CE mark, UL	120Z5040
Belt type crankcase heater, 70 W, 240 V, CE mark, UL	120Z5040

Miscellaneous accessories

Code no.

Acoustic hood	120Z5045
Discharge thermostat kit	7750009

Spare parts

Code no.

Mounting kit for 1 scroll compressor including 4 grommets, 4 sleeves, 4 bolts, 4 washers	120Z5005
Mounting kit, including 1 bolt, 1 sleeve, 1 washer	120Z5031

Performance data at 50 Hz, EN 12900 rating conditions

R22

Cond. temp. in °C (tc)	Evaporating temperature in °C (to)							
	-25	-20	-15	-10	-5	0	5	10

Cooling capacity in W

30	8 237	9 616	11 648	14 293	17 507	21 249	25 476	30 146	-
35	7 728	9 093	11 071	13 621	16 701	20 269	24 282	28 697	-
40	7 077	8 460	10 417	12 906	15 885	19 312	23 145	27 340	-
45	-	7 672	9 641	12 102	15 013	18 332	22 017	26 026	-
50	-	-	8 697	11 161	14 037	17 281	20 851	24 707	-
55	-	-	-	10 041	12 911	16 111	19 600	23 334	-
60	-	-	-	-	11 592	14 779	18 215	21 858	-
65	-	-	-	-	-	13 240	16 652	20 234	-

Power input in W

30	4 278	4 316	4 337	4 334	4 302	4 234	4 126	3 972	-
35	4 773	4 783	4 788	4 783	4 761	4 717	4 644	4 537	-
40	5 324	5 296	5 276	5 257	5 235	5 202	5 154	5 084	-
45	-	5 879	5 823	5 781	5 747	5 716	5 682	5 639	-
50	-	-	6 455	6 379	6 324	6 284	6 253	6 225	-
55	-	-	-	7 077	6 989	6 929	6 891	6 869	-
60	-	-	-	-	7 769	7 679	7 623	7 595	-
65	-	-	-	-	-	8 556	8 472	8 429	-

Current consumption in A

30	8.15	8.31	8.41	8.48	8.50	8.50	8.47	8.43	-
35	8.79	8.90	8.97	9.01	9.03	9.03	9.01	9.00	-
40	9.66	9.73	9.76	9.77	9.78	9.77	9.76	9.77	-
45	-	10.80	10.79	10.77	10.75	10.74	10.74	10.76	-
50	-	-	12.06	12.01	11.97	11.95	11.95	11.98	-
55	-	-	-	13.51	13.44	13.40	13.40	13.44	-
60	-	-	-	-	15.16	15.11	15.10	15.14	-
65	-	-	-	-	-	17.08	17.06	17.10	-

Mass flow in kg/h

30	179	207	247	300	363	435	516	605	-
35	175	204	245	297	359	431	510	596	-
40	166	197	240	293	356	427	505	590	-
45	-	187	232	287	351	422	501	586	-
50	-	-	220	277	343	416	496	581	-
55	-	-	-	263	331	407	489	575	-
60	-	-	-	-	315	394	478	567	-
65	-	-	-	-	-	376	463	555	-

Coefficient of performance (C.O.P.)

30	1.93	2.23	2.69	3.30	4.07	5.02	6.17	7.59	-
35	1.62	1.90	2.31	2.85	3.51	4.30	5.23	6.33	-
40	1.33	1.60	1.97	2.46	3.03	3.71	4.49	5.38	-
45	-	1.30	1.66	2.09	2.61	3.21	3.87	4.62	-
50	-	-	1.35	1.75	2.22	2.75	3.33	3.97	-
55	-	-	-	1.42	1.85	2.33	2.84	3.40	-
60	-	-	-	-	1.49	1.92	2.39	2.88	-
65	-	-	-	-	-	1.55	1.97	2.40	-

Nominal performance at to = 5 °C, tc = 50 °C

Cooling capacity	20 851	W
Power input	6 253	W
Current consumption	11.95	A
Mass flow	496	kg/h
C.O.P.	3.33	

Pressure switch settings

Maximum HP switch setting	29	bar(g)
Minimum LP switch setting	0.5	bar(g)
LP pump down setting	1.3	bar(g)

Sound power data

Sound power level	74	dB(A)
With acoustic hood	69	dB(A)

to: Evaporating temperature at dew point

tc: Condensing temperature at dew point

Rating conditions : Superheat = 10 K , Subcooling = 0 K

All performance data +/- 5%

Danfoss can accept no responsibility for possible errors in catalogues, brochures and other printed material. Danfoss reserves the right to alter its products without notice. This also applies to products already on order provided that such alternations can be made without subsequential changes being necessary in specifications already agreed. All trademarks in this material are property of the respective companies. Danfoss and the Danfoss logotype are trademarks of Danfoss A/S. All rights reserved.

Performance data at 50 Hz, ARI rating conditions

R22

Cond. temp. in °C (tc)	Evaporating temperature in °C (to)							
	-25	-20	-15	-10	-5	0	5	10

Cooling capacity in W

30	8 749	10 204	12 351	15 144	18 536	22 483	26 937	31 853	-
35	8 238	9 683	11 780	14 481	17 741	21 515	25 755	30 417	-
40	7 573	9 045	11 127	13 773	16 937	20 574	24 637	29 081	-
45	-	8 240	10 343	12 970	16 074	19 610	23 532	27 793	-
50	-	-	9 378	12 021	15 102	18 573	22 389	26 504	-
55	-	-	-	10 877	13 970	17 412	21 159	25 164	-
60	-	-	-	-	12 627	16 077	19 791	23 722	-
65	-	-	-	-	-	14 518	18 235	22 128	-

Power input in W

30	4 278	4 316	4 337	4 334	4 302	4 234	4 126	3 972	-
35	4 773	4 783	4 788	4 783	4 761	4 717	4 644	4 537	-
40	5 324	5 296	5 276	5 257	5 235	5 202	5 154	5 084	-
45	-	5 879	5 823	5 781	5 747	5 716	5 682	5 639	-
50	-	-	6 455	6 379	6 324	6 284	6 253	6 225	-
55	-	-	-	7 077	6 989	6 929	6 891	6 869	-
60	-	-	-	-	7 769	7 679	7 623	7 595	-
65	-	-	-	-	-	8 556	8 472	8 429	-

Current consumption in A

30	8.15	8.31	8.41	8.48	8.50	8.50	8.47	8.43	-
35	8.79	8.90	8.97	9.01	9.03	9.03	9.01	9.00	-
40	9.66	9.73	9.76	9.77	9.78	9.77	9.76	9.77	-
45	-	10.80	10.79	10.77	10.75	10.74	10.74	10.76	-
50	-	-	12.06	12.01	11.97	11.95	11.95	11.98	-
55	-	-	-	13.51	13.44	13.40	13.40	13.44	-
60	-	-	-	-	15.16	15.11	15.10	15.14	-
65	-	-	-	-	-	17.08	17.06	17.10	-

Mass flow in kg/h

30	178	206	246	298	361	433	513	601	-
35	174	202	243	295	357	428	507	593	-
40	166	196	239	291	354	425	503	587	-
45	-	186	231	285	349	420	498	582	-
50	-	-	218	276	341	414	493	578	-
55	-	-	-	261	330	405	486	572	-
60	-	-	-	-	313	392	476	564	-
65	-	-	-	-	-	374	461	552	-

Coefficient of performance (C.O.P.)

30	2.04	2.36	2.85	3.49	4.31	5.31	6.53	8.02	-
35	1.73	2.02	2.46	3.03	3.73	4.56	5.55	6.70	-
40	1.42	1.71	2.11	2.62	3.24	3.95	4.78	5.72	-
45	-	1.40	1.78	2.24	2.80	3.43	4.14	4.93	-
50	-	-	1.45	1.88	2.39	2.96	3.58	4.26	-
55	-	-	-	1.54	2.00	2.51	3.07	3.66	-
60	-	-	-	-	1.63	2.09	2.60	3.12	-
65	-	-	-	-	-	1.70	2.15	2.63	-

Nominal performance at to = 7.2 °C, tc = 54.4 °C

Cooling capacity	23 050	W
Power input	6 799	W
Current consumption	13.22	A
Mass flow	524	kg/h
C.O.P.	3.39	

Pressure switch settings

Maximum HP switch setting	29	bar(g)
Minimum LP switch setting	0.5	bar(g)
LP pump down setting	1.3	bar(g)

Sound power data

Sound power level	74	dB(A)
With acoustic hood	69	dB(A)

to: Evaporating temperature at dew point

tc: Condensing temperature at dew point

Rating conditions : Superheat = 11.1 K , Subcooling = 8.3 K

All performance data +/- 5%

Danfoss can accept no responsibility for possible errors in catalogues, brochures and other printed material. Danfoss reserves the right to alter its products without notice. This also applies to products already on order provided that such alternations can be made without subsequential changes being necessary in specifications already agreed. All trademarks in this material are property of the respective companies. Danfoss and the Danfoss logotype are trademarks of Danfoss A/S. All rights reserved.

Performance data at 60 Hz, EN 12900 rating conditions

R22

Cond. temp. in °C (tc)	Evaporating temperature in °C (to)							
	-25	-20	-15	-10	-5	0	5	10

Cooling capacity in W

30	9 883	11 536	13 975	17 147	21 004	25 493	30 565	36 166	-
35	9 274	10 911	13 284	16 344	20 040	24 320	29 135	34 433	-
40	8 494	10 153	12 502	15 489	19 064	23 177	27 776	32 811	-
45	-	9 210	11 573	14 526	18 020	22 004	26 428	31 240	-
50	-	-	10 442	13 400	16 852	20 746	25 033	29 662	-
55	-	-	-	12 057	15 504	19 346	23 535	28 019	-
60	-	-	-	-	13 923	17 750	21 877	26 253	-
65	-	-	-	-	-	15 904	20 003	24 307	-

Power input in W

30	5 221	5 271	5 296	5 291	5 250	5 168	5 039	4 857	-
35	5 794	5 813	5 823	5 816	5 789	5 734	5 647	5 521	-
40	6 421	6 398	6 379	6 359	6 332	6 292	6 234	6 151	-
45	-	7 055	6 995	6 949	6 909	6 872	6 830	6 779	-
50	-	-	7 700	7 615	7 551	7 503	7 465	7 432	-
55	-	-	-	8 386	8 285	8 214	8 168	8 141	-
60	-	-	-	-	9 143	9 036	8 969	8 935	-
65	-	-	-	-	-	9 998	9 897	9 843	-

Current consumption in A

30	8.23	8.39	8.50	8.57	8.59	8.59	8.56	8.52	-
35	8.88	8.99	9.07	9.11	9.12	9.12	9.11	9.09	-
40	9.77	9.83	9.86	9.88	9.88	9.87	9.87	9.87	-
45	-	10.91	10.90	10.89	10.87	10.86	10.85	10.87	-
50	-	-	12.19	12.14	12.10	12.08	12.08	12.11	-
55	-	-	-	13.65	13.58	13.54	13.54	13.58	-
60	-	-	-	-	15.33	15.27	15.26	15.30	-
65	-	-	-	-	-	17.26	17.24	17.29	-

Mass flow in kg/h

30	215	248	297	360	435	522	619	726	-
35	209	244	294	356	431	517	612	716	-
40	200	237	288	352	427	512	607	708	-
45	-	225	278	344	421	507	601	703	-
50	-	-	264	333	412	500	595	697	-
55	-	-	-	315	398	489	587	690	-
60	-	-	-	-	378	473	574	681	-
65	-	-	-	-	-	451	557	667	-

Coefficient of performance (C.O.P.)

30	1.89	2.19	2.64	3.24	4.00	4.93	6.07	7.45	-
35	1.60	1.88	2.28	2.81	3.46	4.24	5.16	6.24	-
40	1.32	1.59	1.96	2.44	3.01	3.68	4.46	5.33	-
45	-	1.31	1.65	2.09	2.61	3.20	3.87	4.61	-
50	-	-	1.36	1.76	2.23	2.77	3.35	3.99	-
55	-	-	-	1.44	1.87	2.36	2.88	3.44	-
60	-	-	-	-	1.52	1.96	2.44	2.94	-
65	-	-	-	-	-	1.59	2.02	2.47	-

Nominal performance at to = 5 °C, tc = 50 °C

Cooling capacity	25 033	W
Power input	7 465	W
Current consumption	12.08	A
Mass flow	595	kg/h
C.O.P.	3.35	

Pressure switch settings

Maximum HP switch setting	29	bar(g)
Minimum LP switch setting	0.5	bar(g)
LP pump down setting	1.3	bar(g)

Sound power data

Sound power level	77	dB(A)
With acoustic hood	72	dB(A)

to: Evaporating temperature at dew point

tc: Condensing temperature at dew point

Rating conditions : Superheat = 10 K , Subcooling = 0 K

All performance data +/- 5%

Danfoss can accept no responsibility for possible errors in catalogues, brochures and other printed material. Danfoss reserves the right to alter its products without notice. This also applies to products already on order provided that such alternations can be made without subsequential changes being necessary in specifications already agreed. All trademarks in this material are property of the respective companies. Danfoss and the Danfoss logotype are trademarks of Danfoss A/S. All rights reserved.

Performance data at 60 Hz, ARI rating conditions
R22

Cond. temp. in °C (tc)	Evaporating temperature in °C (to)							
	-25	-20	-15	-10	-5	0	5	10

Cooling capacity in W

30	10 496	12 242	14 818	18 169	22 239	26 973	32 317	38 214	-
35	9 885	11 619	14 134	17 376	21 288	25 815	30 903	36 497	-
40	9 090	10 855	13 354	16 529	20 326	24 691	29 567	34 899	-
45	-	9 891	12 415	15 568	19 294	23 538	28 245	33 360	-
50	-	-	11 259	14 432	18 130	22 298	26 879	31 820	-
55	-	-	-	13 061	16 774	20 908	25 408	30 217	-
60	-	-	-	-	15 166	19 309	23 769	28 491	-
65	-	-	-	-	-	17 440	21 904	26 582	-

Power input in W

30	5 221	5 271	5 296	5 291	5 250	5 168	5 039	4 857	-
35	5 794	5 813	5 823	5 816	5 789	5 734	5 647	5 521	-
40	6 421	6 398	6 379	6 359	6 332	6 292	6 234	6 151	-
45	-	7 055	6 995	6 949	6 909	6 872	6 830	6 779	-
50	-	-	7 700	7 615	7 551	7 503	7 465	7 432	-
55	-	-	-	8 386	8 285	8 214	8 168	8 141	-
60	-	-	-	-	9 143	9 036	8 969	8 935	-
65	-	-	-	-	-	9 998	9 897	9 843	-

Current consumption in A

30	8.23	8.39	8.50	8.57	8.59	8.59	8.56	8.52	-
35	8.88	8.99	9.07	9.11	9.12	9.12	9.11	9.09	-
40	9.77	9.83	9.86	9.88	9.88	9.87	9.87	9.87	-
45	-	10.91	10.90	10.89	10.87	10.86	10.85	10.87	-
50	-	-	12.19	12.14	12.10	12.08	12.08	12.11	-
55	-	-	-	13.65	13.58	13.54	13.54	13.58	-
60	-	-	-	-	15.33	15.27	15.26	15.30	-
65	-	-	-	-	-	17.26	17.24	17.29	-

Mass flow in kg/h

30	214	247	295	358	433	519	616	721	-
35	208	243	292	354	429	514	609	711	-
40	199	236	286	350	425	509	603	704	-
45	-	223	277	342	419	504	598	699	-
50	-	-	262	331	410	497	592	693	-
55	-	-	-	314	396	486	584	686	-
60	-	-	-	-	376	471	571	677	-
65	-	-	-	-	-	449	554	663	-

Coefficient of performance (C.O.P.)

30	2.01	2.32	2.80	3.43	4.24	5.22	6.41	7.87	-
35	1.71	2.00	2.43	2.99	3.68	4.50	5.47	6.61	-
40	1.42	1.70	2.09	2.60	3.21	3.92	4.74	5.67	-
45	-	1.40	1.77	2.24	2.79	3.43	4.14	4.92	-
50	-	-	1.46	1.90	2.40	2.97	3.60	4.28	-
55	-	-	-	1.56	2.02	2.55	3.11	3.71	-
60	-	-	-	-	1.66	2.14	2.65	3.19	-
65	-	-	-	-	-	1.74	2.21	2.70	-

Nominal performance at to = 7.2 °C, tc = 54.4 °C

Cooling capacity	27 678	W
Power input	8 065	W
Current consumption	13.36	A
Mass flow	629	kg/h
C.O.P.	3.43	

Pressure switch settings

Maximum HP switch setting	29	bar(g)
Minimum LP switch setting	0.5	bar(g)
LP pump down setting	1.3	bar(g)

Sound power data

Sound power level	77	dB(A)
With acoustic hood	72	dB(A)

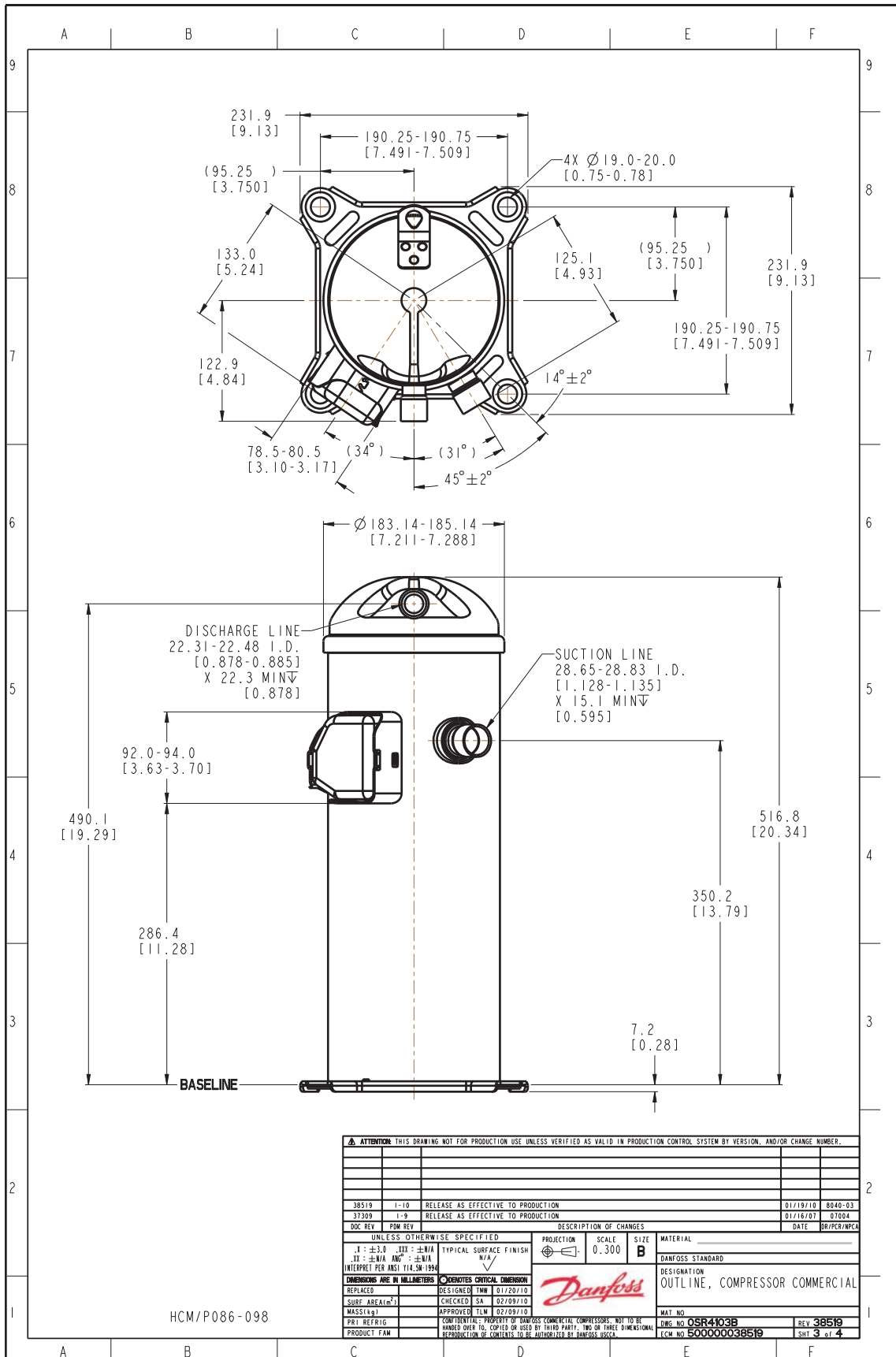
to: Evaporating temperature at dew point

tc: Condensing temperature at dew point

Rating conditions : Superheat = 11.1 K , Subcooling = 8.3 K

All performance data +/- 5%

Danfoss can accept no responsibility for possible errors in catalogues, brochures and other printed material. Danfoss reserves the right to alter its products without notice. This also applies to products already on order provided that such alternations can be made without subsequential changes being necessary in specifications already agreed. All trademarks in this material are property of the respective companies. Danfoss and the Danfoss logotype are trademarks of Danfoss A/S. All rights reserved.

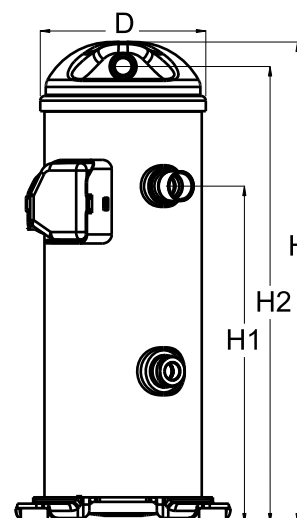


Danfoss can accept no responsibility for possible errors in catalogues, brochures and other printed material. Danfoss reserves the right to alter its products without notice. This also applies to products already on order provided that such alternations can be made without consequential changes being necessary in specifications already agreed. All trademarks in this material are property of the respective companies. Danfoss, the Danfoss logotype and Maneurop are trademarks of Danfoss A/S. All rights reserved.

General Characteristics

Model number (on compressor nameplate)		HCM094T4LC7
Code number for Singlepack*		120U0586
Code number for Industrial pack**		120U0583
Drawing number		0SR6169B-3
Suction and discharge connections		Brazed
Suction connection		1-1/8" ODF
Discharge connection		7/8" ODF
Oil sight glass		Threaded
Oil equalisation connection		None
Oil drain connection		None
LP gauge port		None
IPR valve		None
Swept volume		126,02 cm ³ /rev
Displacement @ Nominal speed		21.9 m ³ /h @ 2900 rpm - 26.5 m ³ /h @ 3500 rpm
Net weight		44 kg
Oil charge		2,66 litre, Alkylbenzene - -
Maximum system test pressure Low Side / High side		- bar(g) / - bar(g)
Maximum differential test pressure		- bar
Maximum number of starts per hour		-
Refrigerant charge limit		7,26 kg
Approved refrigerants		R22

Dimensions

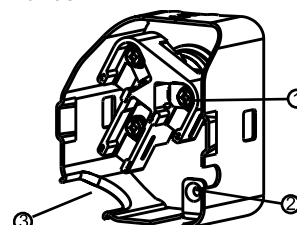


D=184 mm
H=536 mm
H1=369 mm
H2=509 mm
H3=- mm

Electrical Characteristics

Nominal voltage	380-415V/3/50Hz - 460V/3/60Hz
Voltage range	342-457 V @ 50Hz - 414-506 V @ 60Hz
Winding resistance between phases 1-2 +/- 7% at 25°C	1.480 Ω
Winding resistance between phases 1-3 +/- 7% at 25°C	1.480 Ω
Winding resistance between phases 2-3 +/- 7% at 25°C	1.480 Ω
Rated Load Amps (RLA)	13.5 A
Maximum Continuous Current (MCC)	21 A
Locked Rotor Amps (LRA)	95 A
Motor protection	Internal overload protector

Terminal box



IP22

- 1: Screw connectors 10-32 UNF x 9.5
- 2: Earth connection
- 3: Power cable passage

Recommended Installation torques

Oil sight glass	52,5 Nm
Power connections / Earth connection	3 Nm / 2 Nm

Parts shipped with compressor

Mounting kit with grommets and sleeves
Initial oil charge
Installation instructions

Approvals : CE certified, UL certified (file SA11565), -

*Singlepack: Compressor in cardboard box

**Industrial pack: 12 or 16 Unboxed compressors on pallet

Rotolock accessories, suction side

Code no.

Solder sleeve, P02 (1-3/4" Rotolock, 1-1/8" ODF)	8153004
Angle adapter, C02 (1-3/4" Rotolock, 1-1/8" ODF)	8168005
Rotolock valve, V02 (1-3/4" Rotolock, 1-1/8" ODF)	8168028
Gasket, 1-3/4"	8156132

Rotolock accessories, discharge side

Code no.

Rotolock valve, V05 (1-1/4" Rotolock, 7/8" ODF)	8168030
Gasket, 1-3/4"	8156132

Rotolock accessories, sets

Code no.

Solder sleeve adapter set (1-3/4" Rotolock, 1-1/8" ODF), (1-1/4" Rotolock, 7/8" ODF)	120Z0125
Valve set, V02(1"3/4~1"1/8), V05(1"1/4~7/8")	120Z0403
Gasket set, 1", 1-1/4", 1-3/4", OSG gaskets black & white	8156009

Oil / lubricants

Code no.

Crankcase heaters

Code no.

Belt type crankcase heater, 65 W, 230 V, CE mark, UL	120Z0059
Belt type crankcase heater, 65 W, 400 V, CE mark, UL	120Z0060
Belt type crankcase heater, 70 W, 240 V, CE mark, UL	120Z5040
Belt type crankcase heater, 70 W, 240 V, CE mark, UL	120Z5040

Miscellaneous accessories

Code no.

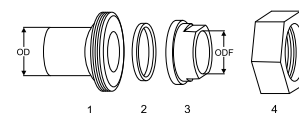
Acoustic hood	120Z5045
Discharge thermostat kit	7750009

Spare parts

Code no.

Mounting kit for 1 scroll compressor including 4 grommets, 4 sleeves, 4 bolts, 4 washers	120Z5005
Mounting kit, including 1 bolt, 1 sleeve, 1 washer	120Z5031

Solder sleeve adapter set



- 1: Rotolock adapter (Suc & Dis)
- 2: Gasket (Suc & Dis)
- 3: Solder sleeve (Suc & Dis)
- 4: Rotolock nut (Suc & Dis)

Performance data at 50 Hz, EN 12900 rating conditions

R22

Cond. temp. in °C (tc)	Evaporating temperature in °C (to)							
	-25	-20	-15	-10	-5	0	5	10

Cooling capacity in W

30	8 237	9 616	11 648	14 293	17 507	21 249	25 476	30 146	-
35	7 728	9 093	11 071	13 621	16 701	20 269	24 282	28 697	-
40	7 077	8 460	10 417	12 906	15 885	19 312	23 145	27 340	-
45	-	7 672	9 641	12 102	15 013	18 332	22 017	26 026	-
50	-	-	8 697	11 161	14 037	17 281	20 851	24 707	-
55	-	-	-	10 041	12 911	16 111	19 600	23 334	-
60	-	-	-	-	11 592	14 779	18 215	21 858	-
65	-	-	-	-	-	13 240	16 652	20 234	-

Power input in W

30	4 278	4 316	4 337	4 334	4 302	4 234	4 126	3 972	-
35	4 773	4 783	4 788	4 783	4 761	4 717	4 644	4 537	-
40	5 324	5 296	5 276	5 257	5 235	5 202	5 154	5 084	-
45	-	5 879	5 823	5 781	5 747	5 716	5 682	5 639	-
50	-	-	6 455	6 379	6 324	6 284	6 253	6 225	-
55	-	-	-	7 077	6 989	6 929	6 891	6 869	-
60	-	-	-	-	7 769	7 679	7 623	7 595	-
65	-	-	-	-	-	8 556	8 472	8 429	-

Current consumption in A

30	8.15	8.31	8.41	8.48	8.50	8.50	8.47	8.43	-
35	8.79	8.90	8.97	9.01	9.03	9.03	9.01	9.00	-
40	9.66	9.73	9.76	9.77	9.78	9.77	9.76	9.77	-
45	-	10.80	10.79	10.77	10.75	10.74	10.74	10.76	-
50	-	-	12.06	12.01	11.97	11.95	11.95	11.98	-
55	-	-	-	13.51	13.44	13.40	13.40	13.44	-
60	-	-	-	-	15.16	15.11	15.10	15.14	-
65	-	-	-	-	-	17.08	17.06	17.10	-

Mass flow in kg/h

30	179	207	247	300	363	435	516	605	-
35	175	204	245	297	359	431	510	596	-
40	166	197	240	293	356	427	505	590	-
45	-	187	232	287	351	422	501	586	-
50	-	-	220	277	343	416	496	581	-
55	-	-	-	263	331	407	489	575	-
60	-	-	-	-	315	394	478	567	-
65	-	-	-	-	-	376	463	555	-

Coefficient of performance (C.O.P.)

30	1.93	2.23	2.69	3.30	4.07	5.02	6.17	7.59	-
35	1.62	1.90	2.31	2.85	3.51	4.30	5.23	6.33	-
40	1.33	1.60	1.97	2.46	3.03	3.71	4.49	5.38	-
45	-	1.30	1.66	2.09	2.61	3.21	3.87	4.62	-
50	-	-	1.35	1.75	2.22	2.75	3.33	3.97	-
55	-	-	-	1.42	1.85	2.33	2.84	3.40	-
60	-	-	-	-	1.49	1.92	2.39	2.88	-
65	-	-	-	-	-	1.55	1.97	2.40	-

Nominal performance at to = 5 °C, tc = 50 °C

Cooling capacity	20 851	W
Power input	6 253	W
Current consumption	11.95	A
Mass flow	496	kg/h
C.O.P.	3.33	

Pressure switch settings

Maximum HP switch setting	29	bar(g)
Minimum LP switch setting	0.5	bar(g)
LP pump down setting	1.3	bar(g)

Sound power data

Sound power level	74	dB(A)
With acoustic hood	69	dB(A)

to: Evaporating temperature at dew point

tc: Condensing temperature at dew point

Rating conditions : Superheat = 10 K , Subcooling = 0 K

All performance data +/- 5%

Danfoss can accept no responsibility for possible errors in catalogues, brochures and other printed material. Danfoss reserves the right to alter its products without notice. This also applies to products already on order provided that such alternations can be made without subsequential changes being necessary in specifications already agreed. All trademarks in this material are property of the respective companies. Danfoss and the Danfoss logotype are trademarks of Danfoss A/S. All rights reserved.

Performance data at 50 Hz, ARI rating conditions

R22

Cond. temp. in °C (tc)	Evaporating temperature in °C (to)							
	-25	-20	-15	-10	-5	0	5	10

Cooling capacity in W

30	8 749	10 204	12 351	15 144	18 536	22 483	26 937	31 853	-
35	8 238	9 683	11 780	14 481	17 741	21 515	25 755	30 417	-
40	7 573	9 045	11 127	13 773	16 937	20 574	24 637	29 081	-
45	-	8 240	10 343	12 970	16 074	19 610	23 532	27 793	-
50	-	-	9 378	12 021	15 102	18 573	22 389	26 504	-
55	-	-	-	10 877	13 970	17 412	21 159	25 164	-
60	-	-	-	-	12 627	16 077	19 791	23 722	-
65	-	-	-	-	-	14 518	18 235	22 128	-

Power input in W

30	4 278	4 316	4 337	4 334	4 302	4 234	4 126	3 972	-
35	4 773	4 783	4 788	4 783	4 761	4 717	4 644	4 537	-
40	5 324	5 296	5 276	5 257	5 235	5 202	5 154	5 084	-
45	-	5 879	5 823	5 781	5 747	5 716	5 682	5 639	-
50	-	-	6 455	6 379	6 324	6 284	6 253	6 225	-
55	-	-	-	7 077	6 989	6 929	6 891	6 869	-
60	-	-	-	-	7 769	7 679	7 623	7 595	-
65	-	-	-	-	-	8 556	8 472	8 429	-

Current consumption in A

30	8.15	8.31	8.41	8.48	8.50	8.50	8.47	8.43	-
35	8.79	8.90	8.97	9.01	9.03	9.03	9.01	9.00	-
40	9.66	9.73	9.76	9.77	9.78	9.77	9.76	9.77	-
45	-	10.80	10.79	10.77	10.75	10.74	10.74	10.76	-
50	-	-	12.06	12.01	11.97	11.95	11.95	11.98	-
55	-	-	-	13.51	13.44	13.40	13.40	13.44	-
60	-	-	-	-	15.16	15.11	15.10	15.14	-
65	-	-	-	-	-	17.08	17.06	17.10	-

Mass flow in kg/h

30	178	206	246	298	361	433	513	601	-
35	174	202	243	295	357	428	507	593	-
40	166	196	239	291	354	425	503	587	-
45	-	186	231	285	349	420	498	582	-
50	-	-	218	276	341	414	493	578	-
55	-	-	-	261	330	405	486	572	-
60	-	-	-	-	313	392	476	564	-
65	-	-	-	-	-	374	461	552	-

Coefficient of performance (C.O.P.)

30	2.04	2.36	2.85	3.49	4.31	5.31	6.53	8.02	-
35	1.73	2.02	2.46	3.03	3.73	4.56	5.55	6.70	-
40	1.42	1.71	2.11	2.62	3.24	3.95	4.78	5.72	-
45	-	1.40	1.78	2.24	2.80	3.43	4.14	4.93	-
50	-	-	1.45	1.88	2.39	2.96	3.58	4.26	-
55	-	-	-	1.54	2.00	2.51	3.07	3.66	-
60	-	-	-	-	1.63	2.09	2.60	3.12	-
65	-	-	-	-	-	1.70	2.15	2.63	-

Nominal performance at to = 7.2 °C, tc = 54.4 °C

Cooling capacity	23 050	W
Power input	6 799	W
Current consumption	13.22	A
Mass flow	524	kg/h
C.O.P.	3.39	

Pressure switch settings

Maximum HP switch setting	29	bar(g)
Minimum LP switch setting	0.5	bar(g)
LP pump down setting	1.3	bar(g)

Sound power data

Sound power level	74	dB(A)
With acoustic hood	69	dB(A)

to: Evaporating temperature at dew point

tc: Condensing temperature at dew point

Rating conditions : Superheat = 11.1 K , Subcooling = 8.3 K

All performance data +/- 5%

Danfoss can accept no responsibility for possible errors in catalogues, brochures and other printed material. Danfoss reserves the right to alter its products without notice. This also applies to products already on order provided that such alternations can be made without subsequential changes being necessary in specifications already agreed. All trademarks in this material are property of the respective companies. Danfoss and the Danfoss logotype are trademarks of Danfoss A/S. All rights reserved.

Performance data at 60 Hz, EN 12900 rating conditions

R22

Cond. temp. in °C (tc)	Evaporating temperature in °C (to)							
	-25	-20	-15	-10	-5	0	5	10

Cooling capacity in W

30	9 883	11 536	13 975	17 147	21 004	25 493	30 565	36 166	-
35	9 274	10 911	13 284	16 344	20 040	24 320	29 135	34 433	-
40	8 494	10 153	12 502	15 489	19 064	23 177	27 776	32 811	-
45	-	9 210	11 573	14 526	18 020	22 004	26 428	31 240	-
50	-	-	10 442	13 400	16 852	20 746	25 033	29 662	-
55	-	-	-	12 057	15 504	19 346	23 535	28 019	-
60	-	-	-	-	13 923	17 750	21 877	26 253	-
65	-	-	-	-	-	15 904	20 003	24 307	-

Power input in W

30	5 221	5 271	5 296	5 291	5 250	5 168	5 039	4 857	-
35	5 794	5 813	5 823	5 816	5 789	5 734	5 647	5 521	-
40	6 421	6 398	6 379	6 359	6 332	6 292	6 234	6 151	-
45	-	7 055	6 995	6 949	6 909	6 872	6 830	6 779	-
50	-	-	7 700	7 615	7 551	7 503	7 465	7 432	-
55	-	-	-	8 386	8 285	8 214	8 168	8 141	-
60	-	-	-	-	9 143	9 036	8 969	8 935	-
65	-	-	-	-	-	9 998	9 897	9 843	-

Current consumption in A

30	8.23	8.39	8.50	8.57	8.59	8.59	8.56	8.52	-
35	8.88	8.99	9.07	9.11	9.12	9.12	9.11	9.09	-
40	9.77	9.83	9.86	9.88	9.88	9.87	9.87	9.87	-
45	-	10.91	10.90	10.89	10.87	10.86	10.85	10.87	-
50	-	-	12.19	12.14	12.10	12.08	12.08	12.11	-
55	-	-	-	13.65	13.58	13.54	13.54	13.58	-
60	-	-	-	-	15.33	15.27	15.26	15.30	-
65	-	-	-	-	-	17.26	17.24	17.29	-

Mass flow in kg/h

30	215	248	297	360	435	522	619	726	-
35	209	244	294	356	431	517	612	716	-
40	200	237	288	352	427	512	607	708	-
45	-	225	278	344	421	507	601	703	-
50	-	-	264	333	412	500	595	697	-
55	-	-	-	315	398	489	587	690	-
60	-	-	-	-	378	473	574	681	-
65	-	-	-	-	-	451	557	667	-

Coefficient of performance (C.O.P.)

30	1.89	2.19	2.64	3.24	4.00	4.93	6.07	7.45	-
35	1.60	1.88	2.28	2.81	3.46	4.24	5.16	6.24	-
40	1.32	1.59	1.96	2.44	3.01	3.68	4.46	5.33	-
45	-	1.31	1.65	2.09	2.61	3.20	3.87	4.61	-
50	-	-	1.36	1.76	2.23	2.77	3.35	3.99	-
55	-	-	-	1.44	1.87	2.36	2.88	3.44	-
60	-	-	-	-	1.52	1.96	2.44	2.94	-
65	-	-	-	-	-	1.59	2.02	2.47	-

Nominal performance at to = 5 °C, tc = 50 °C

Cooling capacity	25 033	W
Power input	7 465	W
Current consumption	12.08	A
Mass flow	595	kg/h
C.O.P.	3.35	

Pressure switch settings

Maximum HP switch setting	29	bar(g)
Minimum LP switch setting	0.5	bar(g)
LP pump down setting	1.3	bar(g)

Sound power data

Sound power level	77	dB(A)
With acoustic hood	72	dB(A)

to: Evaporating temperature at dew point

tc: Condensing temperature at dew point

Rating conditions : Superheat = 10 K, Subcooling = 0 K

All performance data +/- 5%

Danfoss can accept no responsibility for possible errors in catalogues, brochures and other printed material. Danfoss reserves the right to alter its products without notice. This also applies to products already on order provided that such alternations can be made without subsequential changes being necessary in specifications already agreed. All trademarks in this material are property of the respective companies. Danfoss and the Danfoss logotype are trademarks of Danfoss A/S. All rights reserved.

Performance data at 60 Hz, ARI rating conditions
R22

Cond. temp. in °C (tc)	Evaporating temperature in °C (to)								
	-25	-20	-15	-10	-5	0	5	10	15

Cooling capacity in W

30	10 496	12 242	14 818	18 169	22 239	26 973	32 317	38 214	-
35	9 885	11 619	14 134	17 376	21 288	25 815	30 903	36 497	-
40	9 090	10 855	13 354	16 529	20 326	24 691	29 567	34 899	-
45	-	9 891	12 415	15 568	19 294	23 538	28 245	33 360	-
50	-	-	11 259	14 432	18 130	22 298	26 879	31 820	-
55	-	-	-	13 061	16 774	20 908	25 408	30 217	-
60	-	-	-	-	15 166	19 309	23 769	28 491	-
65	-	-	-	-	-	17 440	21 904	26 582	-

Power input in W

30	5 221	5 271	5 296	5 291	5 250	5 168	5 039	4 857	-
35	5 794	5 813	5 823	5 816	5 789	5 734	5 647	5 521	-
40	6 421	6 398	6 379	6 359	6 332	6 292	6 234	6 151	-
45	-	7 055	6 995	6 949	6 909	6 872	6 830	6 779	-
50	-	-	7 700	7 615	7 551	7 503	7 465	7 432	-
55	-	-	-	8 386	8 285	8 214	8 168	8 141	-
60	-	-	-	-	9 143	9 036	8 969	8 935	-
65	-	-	-	-	-	9 998	9 897	9 843	-

Current consumption in A

30	8.23	8.39	8.50	8.57	8.59	8.59	8.56	8.52	-
35	8.88	8.99	9.07	9.11	9.12	9.12	9.11	9.09	-
40	9.77	9.83	9.86	9.88	9.88	9.87	9.87	9.87	-
45	-	10.91	10.90	10.89	10.87	10.86	10.85	10.87	-
50	-	-	12.19	12.14	12.10	12.08	12.08	12.11	-
55	-	-	-	13.65	13.58	13.54	13.54	13.58	-
60	-	-	-	-	15.33	15.27	15.26	15.30	-
65	-	-	-	-	-	17.26	17.24	17.29	-

Mass flow in kg/h

30	214	247	295	358	433	519	616	721	-
35	208	243	292	354	429	514	609	711	-
40	199	236	286	350	425	509	603	704	-
45	-	223	277	342	419	504	598	699	-
50	-	-	262	331	410	497	592	693	-
55	-	-	-	314	396	486	584	686	-
60	-	-	-	-	376	471	571	677	-
65	-	-	-	-	-	449	554	663	-

Coefficient of performance (C.O.P.)

30	2.01	2.32	2.80	3.43	4.24	5.22	6.41	7.87	-
35	1.71	2.00	2.43	2.99	3.68	4.50	5.47	6.61	-
40	1.42	1.70	2.09	2.60	3.21	3.92	4.74	5.67	-
45	-	1.40	1.77	2.24	2.79	3.43	4.14	4.92	-
50	-	-	1.46	1.90	2.40	2.97	3.60	4.28	-
55	-	-	-	1.56	2.02	2.55	3.11	3.71	-
60	-	-	-	-	1.66	2.14	2.65	3.19	-
65	-	-	-	-	-	1.74	2.21	2.70	-

Nominal performance at to = 7.2 °C, tc = 54.4 °C

Cooling capacity	27 678	W
Power input	8 065	W
Current consumption	13.36	A
Mass flow	629	kg/h
C.O.P.	3.43	

Pressure switch settings

Maximum HP switch setting	29	bar(g)
Minimum LP switch setting	0.5	bar(g)
LP pump down setting	1.3	bar(g)

Sound power data

Sound power level	77	dB(A)
With acoustic hood	72	dB(A)

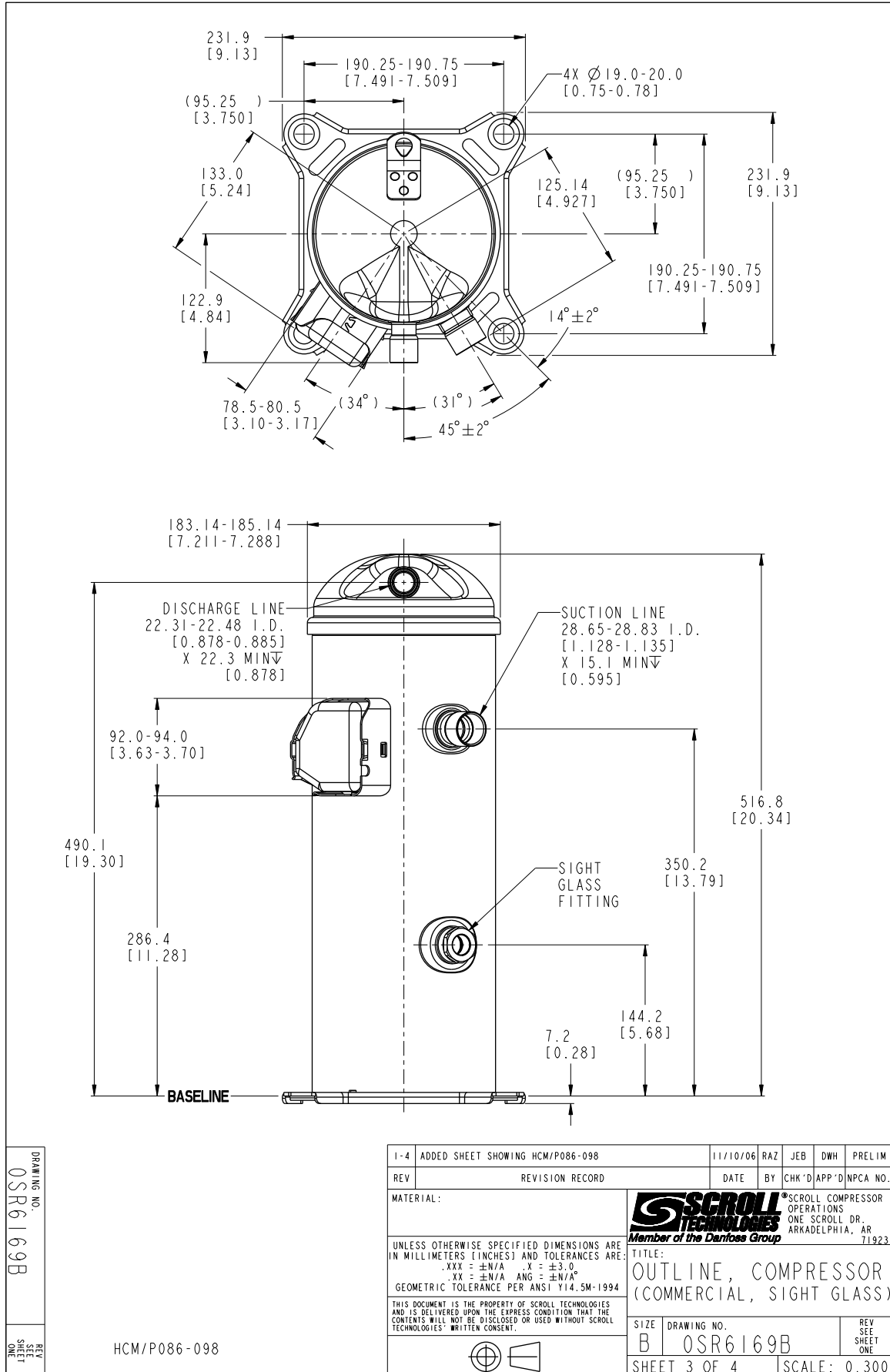
to: Evaporating temperature at dew point

tc: Condensing temperature at dew point

Rating conditions : Superheat = 11.1 K , Subcooling = 8.3 K

All performance data +/- 5%

Danfoss can accept no responsibility for possible errors in catalogues, brochures and other printed material. Danfoss reserves the right to alter its products without notice. This also applies to products already on order provided that such alternations can be made without subsequential changes being necessary in specifications already agreed. All trademarks in this material are property of the respective companies. Danfoss and the Danfoss logotype are trademarks of Danfoss A/S. All rights reserved.

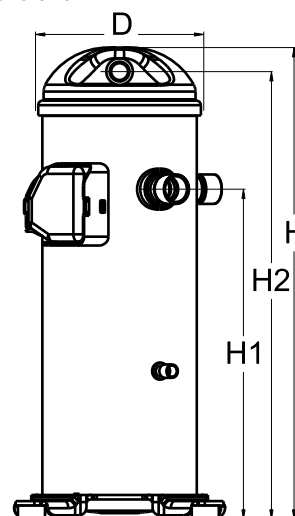


Danfoss can accept no responsibility for possible errors in catalogues, brochures and other printed material. Danfoss reserves the right to alter its products without notice. This also applies to products already on order provided that such alterations can be made without consequential changes being necessary in specifications already agreed. All trademarks in this material are property of the respective companies. Danfoss, the Danfoss logotype and Maneurop are trademarks of Danfoss A/S. All rights reserved.

General Characteristics

Model number (on compressor nameplate)	HCM094T4LC8	
Code number for Singlepack*	120U0596	
Code number for Industrial pack**	120U0593	
Drawing number	0SR4103B-3	
Suction and discharge connections	Brazed	
Suction connection	1-1/8" ODF	
Discharge connection	7/8" ODF	
Oil sight glass	None	
Oil equalisation connection	None	
Oil drain connection	None	
LP gauge port	None	
IPR valve	None	
Swept volume	126,02 cm ³ /rev	
Displacement @ Nominal speed	21.9 m ³ /h @ 2900 rpm - 26.5 m ³ /h @ 3500 rpm	
Net weight	44 kg	
Oil charge	2,66 litre, Alkylbenzene - -	
Maximum system test pressure Low Side / High side	- bar(g) / - bar(g)	
Maximum differential test pressure	- bar	
Maximum number of starts per hour	-	
Refrigerant charge limit	7,26 kg	
Approved refrigerants	R22	

Dimensions

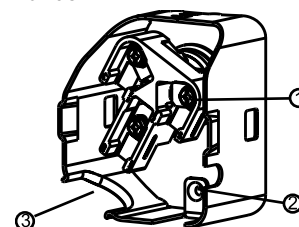


D=184 mm
H=536 mm
H1=369 mm
H2=509 mm
H3=- mm

Electrical Characteristics

Nominal voltage	380-415V/3/50Hz - 460V/3/60Hz	
Voltage range	342-457 V @ 50Hz - 414-506 V @ 60Hz	
Winding resistance between phases 1-2 +/- 7% at 25°C	1.480 Ω	
Winding resistance between phases 1-3 +/- 7% at 25°C	1.480 Ω	
Winding resistance between phases 2-3 +/- 7% at 25°C	1.480 Ω	
Rated Load Amps (RLA)	13.5 A	
Maximum Continuous Current (MCC)	21 A	
Locked Rotor Amps (LRA)	95 A	
Motor protection	Internal overload protector	

Terminal box



IP22

- 1: Screw connectors 10-32 UNF x 9.5
- 2: Earth connection
- 3: Power cable passage

Recommended Installation torques

Oil sight glass	52,5 Nm
Power connections / Earth connection	3 Nm / 2 Nm

Parts shipped with compressor

Mounting kit with grommets and sleeves
Initial oil charge
Installation instructions

Approvals : CE certified, UL certified (file SA11565), -

*Singlepack: Compressor in cardboard box

**Industrial pack: 12 or 16 Unboxed compressors on pallet

Rotolock accessories, suction side

Code no.

Solder sleeve, P02 (1-3/4" Rotolock, 1-1/8" ODF)	8153004
Angle adapter, C02 (1-3/4" Rotolock, 1-1/8" ODF)	8168005
Rotolock valve, V02 (1-3/4" Rotolock, 1-1/8" ODF)	8168028
Gasket, 1-3/4"	8156132

Rotolock accessories, discharge side

Code no.

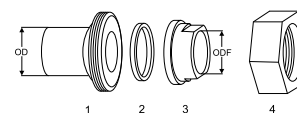
Rotolock valve, V05 (1-1/4" Rotolock, 7/8" ODF)	8168030
Gasket, 1-3/4"	8156132

Rotolock accessories, sets

Code no.

Solder sleeve adapter set (1-3/4" Rotolock, 1-1/8" ODF), (1-1/4" Rotolock, 7/8" ODF)	120Z0125
Valve set, V02(1"3/4~1"1/8), V05(1"1/4~7/8")	120Z0403
Gasket set, 1", 1-1/4", 1-3/4", OSG gaskets black & white	8156009

Solder sleeve adapter set



- 1: Rotolock adapter (Suc & Dis)
- 2: Gasket (Suc & Dis)
- 3: Solder sleeve (Suc & Dis)
- 4: Rotolock nut (Suc & Dis)

Oil / lubricants

Code no.

Crankcase heaters

Code no.

Belt type crankcase heater, 65 W, 230 V, CE mark, UL	120Z0059
Belt type crankcase heater, 65 W, 400 V, CE mark, UL	120Z0060
Belt type crankcase heater, 70 W, 240 V, CE mark, UL	120Z5040
Belt type crankcase heater, 70 W, 240 V, CE mark, UL	120Z5040

Miscellaneous accessories

Code no.

Acoustic hood	120Z5045
Discharge thermostat kit	7750009

Spare parts

Code no.

Mounting kit for 1 scroll compressor including 4 grommets, 4 sleeves, 4 bolts, 4 washers	120Z5005
Mounting kit, including 1 bolt, 1 sleeve, 1 washer	120Z5031

Performance data at 50 Hz, EN 12900 rating conditions

R22

Cond. temp. in °C (tc)	Evaporating temperature in °C (to)							
	-25	-20	-15	-10	-5	0	5	10

Cooling capacity in W

30	8 237	9 616	11 648	14 293	17 507	21 249	25 476	30 146	-
35	7 728	9 093	11 071	13 621	16 701	20 269	24 282	28 697	-
40	7 077	8 460	10 417	12 906	15 885	19 312	23 145	27 340	-
45	-	7 672	9 641	12 102	15 013	18 332	22 017	26 026	-
50	-	-	8 697	11 161	14 037	17 281	20 851	24 707	-
55	-	-	-	10 041	12 911	16 111	19 600	23 334	-
60	-	-	-	-	11 592	14 779	18 215	21 858	-
65	-	-	-	-	-	13 240	16 652	20 234	-

Power input in W

30	4 278	4 316	4 337	4 334	4 302	4 234	4 126	3 972	-
35	4 773	4 783	4 788	4 783	4 761	4 717	4 644	4 537	-
40	5 324	5 296	5 276	5 257	5 235	5 202	5 154	5 084	-
45	-	5 879	5 823	5 781	5 747	5 716	5 682	5 639	-
50	-	-	6 455	6 379	6 324	6 284	6 253	6 225	-
55	-	-	-	7 077	6 989	6 929	6 891	6 869	-
60	-	-	-	-	7 769	7 679	7 623	7 595	-
65	-	-	-	-	-	8 556	8 472	8 429	-

Current consumption in A

30	8.15	8.31	8.41	8.48	8.50	8.50	8.47	8.43	-
35	8.79	8.90	8.97	9.01	9.03	9.03	9.01	9.00	-
40	9.66	9.73	9.76	9.77	9.78	9.77	9.76	9.77	-
45	-	10.80	10.79	10.77	10.75	10.74	10.74	10.76	-
50	-	-	12.06	12.01	11.97	11.95	11.95	11.98	-
55	-	-	-	13.51	13.44	13.40	13.40	13.44	-
60	-	-	-	-	15.16	15.11	15.10	15.14	-
65	-	-	-	-	-	17.08	17.06	17.10	-

Mass flow in kg/h

30	179	207	247	300	363	435	516	605	-
35	175	204	245	297	359	431	510	596	-
40	166	197	240	293	356	427	505	590	-
45	-	187	232	287	351	422	501	586	-
50	-	-	220	277	343	416	496	581	-
55	-	-	-	263	331	407	489	575	-
60	-	-	-	-	315	394	478	567	-
65	-	-	-	-	-	376	463	555	-

Coefficient of performance (C.O.P.)

30	1.93	2.23	2.69	3.30	4.07	5.02	6.17	7.59	-
35	1.62	1.90	2.31	2.85	3.51	4.30	5.23	6.33	-
40	1.33	1.60	1.97	2.46	3.03	3.71	4.49	5.38	-
45	-	1.30	1.66	2.09	2.61	3.21	3.87	4.62	-
50	-	-	1.35	1.75	2.22	2.75	3.33	3.97	-
55	-	-	-	1.42	1.85	2.33	2.84	3.40	-
60	-	-	-	-	1.49	1.92	2.39	2.88	-
65	-	-	-	-	-	1.55	1.97	2.40	-

Nominal performance at to = 5 °C, tc = 50 °C

Cooling capacity	20 851	W
Power input	6 253	W
Current consumption	11.95	A
Mass flow	496	kg/h
C.O.P.	3.33	

Pressure switch settings

Maximum HP switch setting	29	bar(g)
Minimum LP switch setting	0.5	bar(g)
LP pump down setting	1.3	bar(g)

Sound power data

Sound power level	74	dB(A)
With acoustic hood	69	dB(A)

to: Evaporating temperature at dew point

tc: Condensing temperature at dew point

Rating conditions : Superheat = 10 K , Subcooling = 0 K

All performance data +/- 5%

Danfoss can accept no responsibility for possible errors in catalogues, brochures and other printed material. Danfoss reserves the right to alter its products without notice. This also applies to products already on order provided that such alternations can be made without subsequential changes being necessary in specifications already agreed. All trademarks in this material are property of the respective companies. Danfoss and the Danfoss logotype are trademarks of Danfoss A/S. All rights reserved.

Performance data at 50 Hz, ARI rating conditions

R22

Cond. temp. in °C (tc)	Evaporating temperature in °C (to)							
	-25	-20	-15	-10	-5	0	5	10

Cooling capacity in W

30	8 749	10 204	12 351	15 144	18 536	22 483	26 937	31 853	-
35	8 238	9 683	11 780	14 481	17 741	21 515	25 755	30 417	-
40	7 573	9 045	11 127	13 773	16 937	20 574	24 637	29 081	-
45	-	8 240	10 343	12 970	16 074	19 610	23 532	27 793	-
50	-	-	9 378	12 021	15 102	18 573	22 389	26 504	-
55	-	-	-	10 877	13 970	17 412	21 159	25 164	-
60	-	-	-	-	12 627	16 077	19 791	23 722	-
65	-	-	-	-	-	14 518	18 235	22 128	-

Power input in W

30	4 278	4 316	4 337	4 334	4 302	4 234	4 126	3 972	-
35	4 773	4 783	4 788	4 783	4 761	4 717	4 644	4 537	-
40	5 324	5 296	5 276	5 257	5 235	5 202	5 154	5 084	-
45	-	5 879	5 823	5 781	5 747	5 716	5 682	5 639	-
50	-	-	6 455	6 379	6 324	6 284	6 253	6 225	-
55	-	-	-	7 077	6 989	6 929	6 891	6 869	-
60	-	-	-	-	7 769	7 679	7 623	7 595	-
65	-	-	-	-	-	8 556	8 472	8 429	-

Current consumption in A

30	8.15	8.31	8.41	8.48	8.50	8.50	8.47	8.43	-
35	8.79	8.90	8.97	9.01	9.03	9.03	9.01	9.00	-
40	9.66	9.73	9.76	9.77	9.78	9.77	9.76	9.77	-
45	-	10.80	10.79	10.77	10.75	10.74	10.74	10.76	-
50	-	-	12.06	12.01	11.97	11.95	11.95	11.98	-
55	-	-	-	13.51	13.44	13.40	13.40	13.44	-
60	-	-	-	-	15.16	15.11	15.10	15.14	-
65	-	-	-	-	-	17.08	17.06	17.10	-

Mass flow in kg/h

30	178	206	246	298	361	433	513	601	-
35	174	202	243	295	357	428	507	593	-
40	166	196	239	291	354	425	503	587	-
45	-	186	231	285	349	420	498	582	-
50	-	-	218	276	341	414	493	578	-
55	-	-	-	261	330	405	486	572	-
60	-	-	-	-	313	392	476	564	-
65	-	-	-	-	-	374	461	552	-

Coefficient of performance (C.O.P.)

30	2.04	2.36	2.85	3.49	4.31	5.31	6.53	8.02	-
35	1.73	2.02	2.46	3.03	3.73	4.56	5.55	6.70	-
40	1.42	1.71	2.11	2.62	3.24	3.95	4.78	5.72	-
45	-	1.40	1.78	2.24	2.80	3.43	4.14	4.93	-
50	-	-	1.45	1.88	2.39	2.96	3.58	4.26	-
55	-	-	-	1.54	2.00	2.51	3.07	3.66	-
60	-	-	-	-	1.63	2.09	2.60	3.12	-
65	-	-	-	-	-	1.70	2.15	2.63	-

Nominal performance at to = 7.2 °C, tc = 54.4 °C

Cooling capacity	23 050	W
Power input	6 799	W
Current consumption	13.22	A
Mass flow	524	kg/h
C.O.P.	3.39	

Pressure switch settings

Maximum HP switch setting	29	bar(g)
Minimum LP switch setting	0.5	bar(g)
LP pump down setting	1.3	bar(g)

Sound power data

Sound power level	74	dB(A)
With acoustic hood	69	dB(A)

to: Evaporating temperature at dew point

tc: Condensing temperature at dew point

Rating conditions : Superheat = 11.1 K , Subcooling = 8.3 K

All performance data +/- 5%

Danfoss can accept no responsibility for possible errors in catalogues, brochures and other printed material. Danfoss reserves the right to alter its products without notice. This also applies to products already on order provided that such alternations can be made without subsequential changes being necessary in specifications already agreed. All trademarks in this material are property of the respective companies. Danfoss and the Danfoss logotype are trademarks of Danfoss A/S. All rights reserved.

Performance data at 60 Hz, EN 12900 rating conditions

R22

Cond. temp. in °C (tc)	Evaporating temperature in °C (to)							
	-25	-20	-15	-10	-5	0	5	10

Cooling capacity in W

30	9 883	11 536	13 975	17 147	21 004	25 493	30 565	36 166	-
35	9 274	10 911	13 284	16 344	20 040	24 320	29 135	34 433	-
40	8 494	10 153	12 502	15 489	19 064	23 177	27 776	32 811	-
45	-	9 210	11 573	14 526	18 020	22 004	26 428	31 240	-
50	-	-	10 442	13 400	16 852	20 746	25 033	29 662	-
55	-	-	-	12 057	15 504	19 346	23 535	28 019	-
60	-	-	-	-	13 923	17 750	21 877	26 253	-
65	-	-	-	-	-	15 904	20 003	24 307	-

Power input in W

30	5 221	5 271	5 296	5 291	5 250	5 168	5 039	4 857	-
35	5 794	5 813	5 823	5 816	5 789	5 734	5 647	5 521	-
40	6 421	6 398	6 379	6 359	6 332	6 292	6 234	6 151	-
45	-	7 055	6 995	6 949	6 909	6 872	6 830	6 779	-
50	-	-	7 700	7 615	7 551	7 503	7 465	7 432	-
55	-	-	-	8 386	8 285	8 214	8 168	8 141	-
60	-	-	-	-	9 143	9 036	8 969	8 935	-
65	-	-	-	-	-	9 998	9 897	9 843	-

Current consumption in A

30	8.23	8.39	8.50	8.57	8.59	8.59	8.56	8.52	-
35	8.88	8.99	9.07	9.11	9.12	9.12	9.11	9.09	-
40	9.77	9.83	9.86	9.88	9.88	9.87	9.87	9.87	-
45	-	10.91	10.90	10.89	10.87	10.86	10.85	10.87	-
50	-	-	12.19	12.14	12.10	12.08	12.08	12.11	-
55	-	-	-	13.65	13.58	13.54	13.54	13.58	-
60	-	-	-	-	15.33	15.27	15.26	15.30	-
65	-	-	-	-	-	17.26	17.24	17.29	-

Mass flow in kg/h

30	215	248	297	360	435	522	619	726	-
35	209	244	294	356	431	517	612	716	-
40	200	237	288	352	427	512	607	708	-
45	-	225	278	344	421	507	601	703	-
50	-	-	264	333	412	500	595	697	-
55	-	-	-	315	398	489	587	690	-
60	-	-	-	-	378	473	574	681	-
65	-	-	-	-	-	451	557	667	-

Coefficient of performance (C.O.P.)

30	1.89	2.19	2.64	3.24	4.00	4.93	6.07	7.45	-
35	1.60	1.88	2.28	2.81	3.46	4.24	5.16	6.24	-
40	1.32	1.59	1.96	2.44	3.01	3.68	4.46	5.33	-
45	-	1.31	1.65	2.09	2.61	3.20	3.87	4.61	-
50	-	-	1.36	1.76	2.23	2.77	3.35	3.99	-
55	-	-	-	1.44	1.87	2.36	2.88	3.44	-
60	-	-	-	-	1.52	1.96	2.44	2.94	-
65	-	-	-	-	-	1.59	2.02	2.47	-

Nominal performance at to = 5 °C, tc = 50 °C

Cooling capacity	25 033	W
Power input	7 465	W
Current consumption	12.08	A
Mass flow	595	kg/h
C.O.P.	3.35	

Pressure switch settings

Maximum HP switch setting	29	bar(g)
Minimum LP switch setting	0.5	bar(g)
LP pump down setting	1.3	bar(g)

Sound power data

Sound power level	77	dB(A)
With acoustic hood	72	dB(A)

to: Evaporating temperature at dew point

tc: Condensing temperature at dew point

Rating conditions : Superheat = 10 K , Subcooling = 0 K

All performance data +/- 5%

Danfoss can accept no responsibility for possible errors in catalogues, brochures and other printed material. Danfoss reserves the right to alter its products without notice. This also applies to products already on order provided that such alternations can be made without subsequential changes being necessary in specifications already agreed. All trademarks in this material are property of the respective companies. Danfoss and the Danfoss logotype are trademarks of Danfoss A/S. All rights reserved.

Performance data at 60 Hz, ARI rating conditions
R22

Cond. temp. in °C (tc)	Evaporating temperature in °C (to)								
	-25	-20	-15	-10	-5	0	5	10	15

Cooling capacity in W

30	10 496	12 242	14 818	18 169	22 239	26 973	32 317	38 214	-
35	9 885	11 619	14 134	17 376	21 288	25 815	30 903	36 497	-
40	9 090	10 855	13 354	16 529	20 326	24 691	29 567	34 899	-
45	-	9 891	12 415	15 568	19 294	23 538	28 245	33 360	-
50	-	-	11 259	14 432	18 130	22 298	26 879	31 820	-
55	-	-	-	13 061	16 774	20 908	25 408	30 217	-
60	-	-	-	-	15 166	19 309	23 769	28 491	-
65	-	-	-	-	-	17 440	21 904	26 582	-

Power input in W

30	5 221	5 271	5 296	5 291	5 250	5 168	5 039	4 857	-
35	5 794	5 813	5 823	5 816	5 789	5 734	5 647	5 521	-
40	6 421	6 398	6 379	6 359	6 332	6 292	6 234	6 151	-
45	-	7 055	6 995	6 949	6 909	6 872	6 830	6 779	-
50	-	-	7 700	7 615	7 551	7 503	7 465	7 432	-
55	-	-	-	8 386	8 285	8 214	8 168	8 141	-
60	-	-	-	-	9 143	9 036	8 969	8 935	-
65	-	-	-	-	-	9 998	9 897	9 843	-

Current consumption in A

30	8.23	8.39	8.50	8.57	8.59	8.59	8.56	8.52	-
35	8.88	8.99	9.07	9.11	9.12	9.12	9.11	9.09	-
40	9.77	9.83	9.86	9.88	9.88	9.87	9.87	9.87	-
45	-	10.91	10.90	10.89	10.87	10.86	10.85	10.87	-
50	-	-	12.19	12.14	12.10	12.08	12.08	12.11	-
55	-	-	-	13.65	13.58	13.54	13.54	13.58	-
60	-	-	-	-	15.33	15.27	15.26	15.30	-
65	-	-	-	-	-	17.26	17.24	17.29	-

Mass flow in kg/h

30	214	247	295	358	433	519	616	721	-
35	208	243	292	354	429	514	609	711	-
40	199	236	286	350	425	509	603	704	-
45	-	223	277	342	419	504	598	699	-
50	-	-	262	331	410	497	592	693	-
55	-	-	-	314	396	486	584	686	-
60	-	-	-	-	376	471	571	677	-
65	-	-	-	-	-	449	554	663	-

Coefficient of performance (C.O.P.)

30	2.01	2.32	2.80	3.43	4.24	5.22	6.41	7.87	-
35	1.71	2.00	2.43	2.99	3.68	4.50	5.47	6.61	-
40	1.42	1.70	2.09	2.60	3.21	3.92	4.74	5.67	-
45	-	1.40	1.77	2.24	2.79	3.43	4.14	4.92	-
50	-	-	1.46	1.90	2.40	2.97	3.60	4.28	-
55	-	-	-	1.56	2.02	2.55	3.11	3.71	-
60	-	-	-	-	1.66	2.14	2.65	3.19	-
65	-	-	-	-	-	1.74	2.21	2.70	-

Nominal performance at to = 7.2 °C, tc = 54.4 °C

Cooling capacity	27 678	W
Power input	8 065	W
Current consumption	13.36	A
Mass flow	629	kg/h
C.O.P.	3.43	

Pressure switch settings

Maximum HP switch setting	29	bar(g)
Minimum LP switch setting	0.5	bar(g)
LP pump down setting	1.3	bar(g)

Sound power data

Sound power level	77	dB(A)
With acoustic hood	72	dB(A)

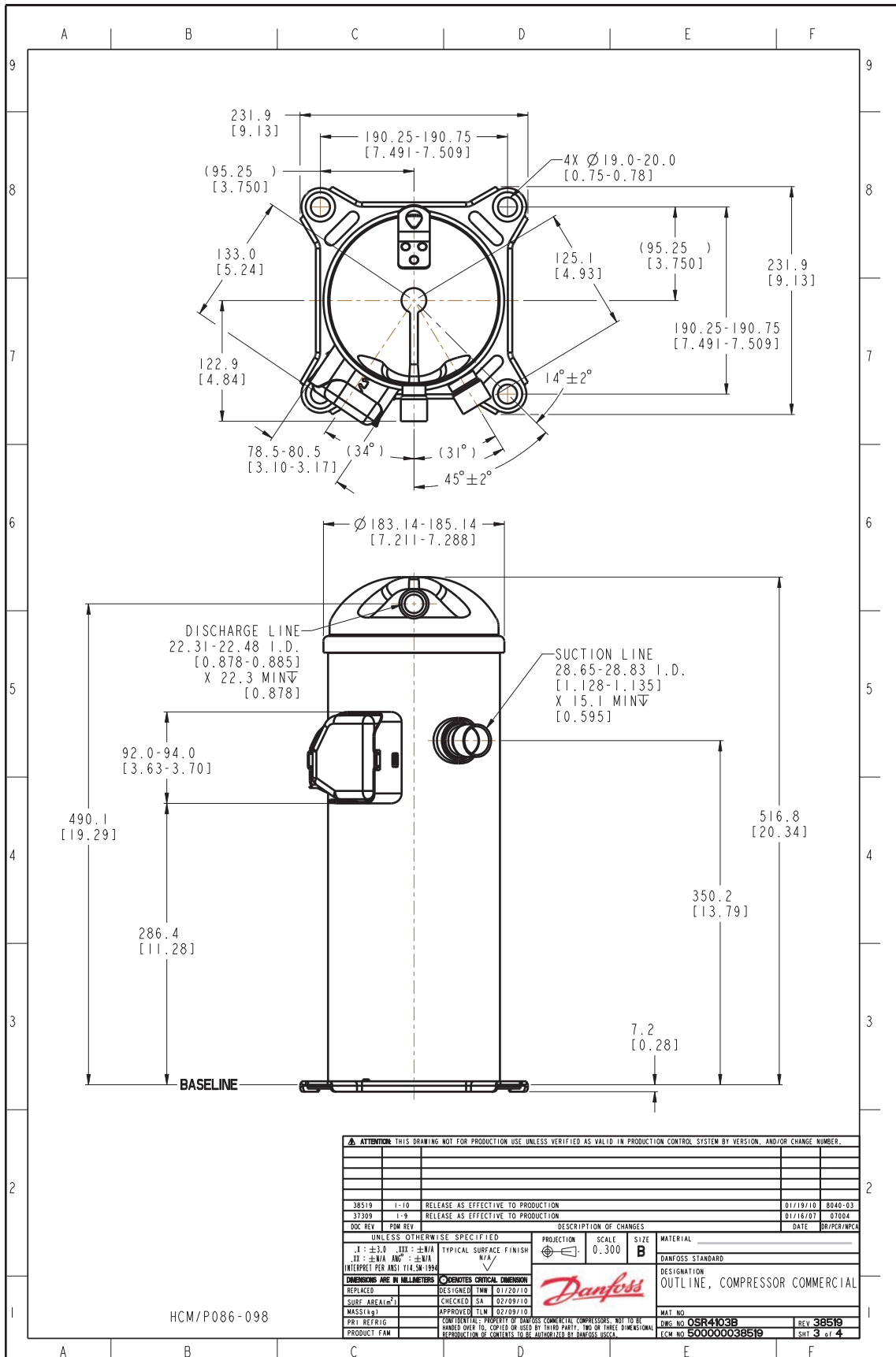
to: Evaporating temperature at dew point

tc: Condensing temperature at dew point

Rating conditions : Superheat = 11.1 K , Subcooling = 8.3 K

All performance data +/- 5%

Danfoss can accept no responsibility for possible errors in catalogues, brochures and other printed material. Danfoss reserves the right to alter its products without notice. This also applies to products already on order provided that such alternations can be made without subsequential changes being necessary in specifications already agreed. All trademarks in this material are property of the respective companies. Danfoss and the Danfoss logotype are trademarks of Danfoss A/S. All rights reserved.



ATTENTION: THIS DRAWING NOT FOR PRODUCTION USE UNLESS VERIFIED AS VALID IN PRODUCTION CONTROL SYSTEM BY VERSION, AND/OR CHANGE NUMBER.			
38519	1-10	RELEASE AS EFFECTIVE TO PRODUCTION	01/19/10 8040-03
37309	1-9	RELEASE AS EFFECTIVE TO PRODUCTION	01/16/07 07004
DOC REV	POW REV	DESCRIPTION OF CHANGES	DATE DR/PR/MP/CA
UNLESS OTHERWISE SPECIFIED:		PROJECTION	SCALE
I - ±0.10 III - ±0.075		0	0.300
II - ±0.15 IV - ±0.10		SIZE	B
INTERPRET PER ANSI Y14.5M-1994		MATERIAL	
DIMENSIONS ARE IN MILLIMETERS		DANFOSS STANDARD	
REPLACED		DESIGNATION	
SUBST. AREA (m²)		OUTLINE, COMPRESSOR COMMERCIAL	
MASS (kg)		MATERIAL	
PRODUCT FAM		DANFOS	
CONFIDENTIAL: PROPERTY OF DANFOSS COMMERCIAL COMPRESSORS. NOT TO BE HANDED OVER TO, COPIED OR USED BY THIRD PARTY. TWO OR THREE DIMENSIONAL REPRODUCTION OF CONTENTS TO BE AUTHORIZED BY DANFOSS A/S.		MAT NO	
		DANFOS NO OSR4103B	
		REV 38519	
		ECM NO 500000038519	
		SHT 3 of 4	

Danfoss can accept no responsibility for possible errors in catalogues, brochures and other printed material. Danfoss reserves the right to alter its products without notice. This also applies to products already on order provided that such alternations can be made without consequential changes being necessary in specifications already agreed. All trademarks in this material are property of the respective companies. Danfoss, the Danfoss logotype and Maneurop are trademarks of Danfoss A/S. All rights reserved.