

ENGINEERING
TOMORROW

Danfoss

Datasheets

Danfoss scroll compressors **H series**



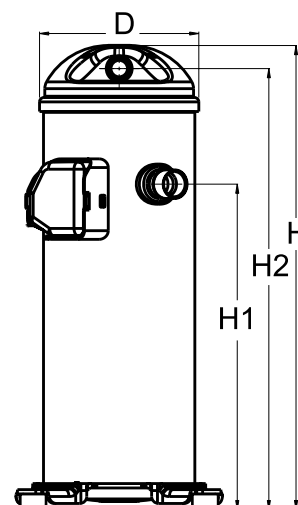
FRCC.UD.180315.135727

www.danfoss.com/odsg

General Characteristics

Model number (on compressor nameplate)		HLJ083T4LC6
Code number for Singlepack*		120U1401
Code number for Industrial pack**		120U1398
Drawing number		0XR6089B-1
Suction and discharge connections		Brazed
Suction connection		7/8 " ODF
Discharge connection		1/2 " ODF
Oil sight glass		None
Oil equalisation connection		None
Oil drain connection		None
LP gauge port		None
IPR valve		Yes
Swept volume		78.08 cm ³ /rev
Displacement @ Nominal speed		13.6 m ³ /h @ 2900 rpm - 16.4 m ³ /h @ 3500 rpm
Net weight		37.2 kg
Oil charge		1.57 litre, PVE --
Maximum system test pressure Low Side / High side		- bar(g) / - bar(g)
Maximum differential test pressure		- bar
Maximum number of starts per hour		-
Refrigerant charge limit		5.44 kg
Approved refrigerants		R410A

Dimensions



D=183.5 mm

H=455 mm

H1=280 mm

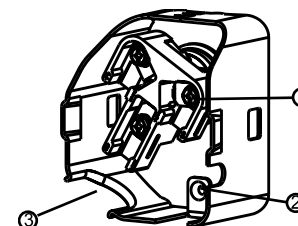
H2=422 mm

H3=- mm

Electrical Characteristics

Nominal voltage	380-415V/3/50Hz - 460V/3/60Hz
Voltage range	342-457 V @ 50Hz - 414-506 V @ 60Hz
Winding resistance between phases 1-2 +/- 7% at 25°C	1.617 Ω
Winding resistance between phases 1-3 +/- 7% at 25°C	1.595 Ω
Winding resistance between phases 2-3 +/- 7% at 25°C	1.630 Ω
Rated Load Amps (RLA)	13 A
Maximum Continuous Current (MCC)	19 A
Locked Rotor Amps (LRA)	100 A
Motor protection	Internal overload protector

Terminal box



IP22

1: Screw connectors 10-32 UNF x 9.5

2: Earth connection

3: Power cable passage

Recommended Installation torques

Oil sight glass	52.5 Nm
Power connections / Earth connection	3 Nm / 2 Nm

Parts shipped with compressor

Mounting kit with grommets and sleeves
Initial oil charge
Installation instructions

Approvals : CE certified, UL certified (file SA11565), -

*Singlepack: Compressor in cardboard box

**Industrial pack: 12 or 16 Unboxed compressors on pallet

Rotolock accessories, suction side

Code no.

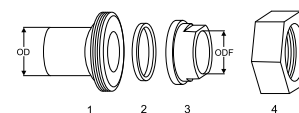
Rotolock valve, V05 (1-1/4" Rotolock, 7/8" ODF)	8168030
Gasket, 1-1/4"	8156131

Rotolock accessories, discharge side

Code no.

Solder sleeve, P06 (1" Rotolock, 1/2" ODF)	8153007
Angle adapter, C06 (1" Rotolock, 1/2" ODF)	8168007
Rotolock valve, V06 (1" Rotolock, 1/2" ODF)	8168031
Gasket, 1"	8156130

Solder sleeve adapter set



- 1: Rotolock adapter (Suc & Dis)
- 2: Gasket (Suc & Dis)
- 3: Solder sleeve (Suc & Dis)
- 4: Rotolock nut (Suc & Dis)

Rotolock accessories, sets

Code no.

Solder sleeve adapter set (1-1/4" Rotolock, 7/8" ODF), (1" Rotolock, 1/2" ODF)	120Z0127
Gasket set, 1", 1-1/4", 1-3/4", OSG gaskets black & white	8156009

Oil / lubricants

Code no.

PVE lubricant, 320HV (FVC68D), 1 litre can	120Z5034
--	----------

Crankcase heaters

Code no.

Belt type crankcase heater, 65 W, 230 V, CE mark, UL	120Z0059
Belt type crankcase heater, 65 W, 400 V, CE mark, UL	120Z0060
Belt type crankcase heater, 70 W, 240 V, CE mark, UL	120Z5040
Belt type crankcase heater, 70 W, 240 V, CE mark, UL	120Z5040

Miscellaneous accessories

Code no.

Acoustic hood	120Z5044
Discharge thermostat kit	7750009
IP54 upgrade kit	118U0057

Spare parts

Code no.

Mounting kit for 1 scroll compressor including 4 grommets, 4 sleeves, 4 bolts, 4 washers	120Z5005
Mounting kit, including 1 bolt, 1 sleeve, 1 washer	120Z5031
Terminal box cover	120Z5018

Performance data at 50 Hz, EN 12900 rating conditions
R410A

Cond. temp. in °C (tc)	Evaporating temperature in °C (to)							
	-25	-20	-15	-10	-5	0	5	10

Cooling capacity in W

30	7 228	9 109	11 215	13 662	16 563	20 035	24 194	29 155	-
35	6 444	8 427	10 537	12 887	15 592	18 766	22 524	26 982	-
40	5 366	7 524	9 712	12 042	14 627	17 581	21 018	25 051	-
45	-	6 330	8 666	11 049	13 588	16 397	19 588	23 274	-
50	-	-	7 328	9 830	12 395	15 131	18 150	21 564	-
55	-	-	-	8 315	10 968	13 698	16 613	19 823	-
60	-	-	-	-	9 230	12 008	14 877	17 944	-
65	-	-	-	-	-	9 959	12 815	15 777	-

Power input in W

30	3 884	3 940	3 973	3 981	3 962	3 911	3 827	3 706	-
35	4 234	4 304	4 354	4 380	4 380	4 351	4 291	4 195	-
40	4 624	4 704	4 765	4 805	4 820	4 808	4 766	4 691	-
45	-	5 149	5 217	5 265	5 291	5 291	5 262	5 203	-
50	-	-	5 718	5 770	5 802	5 809	5 790	5 741	-
55	-	-	-	6 330	6 363	6 373	6 358	6 316	-
60	-	-	-	-	6 984	6 992	6 977	6 936	-
65	-	-	-	-	-	7 675	7 656	7 612	-

Current consumption in A

30	8.94	8.89	8.84	8.80	8.78	8.76	8.76	8.77	-
35	9.24	9.24	9.24	9.23	9.22	9.21	9.19	9.18	-
40	9.63	9.69	9.72	9.74	9.75	9.74	9.71	9.68	-
45	-	10.24	10.32	10.36	10.38	10.37	10.34	10.28	-
50	-	-	11.04	11.11	11.14	11.13	11.08	11.00	-
55	-	-	-	12.00	12.04	12.03	11.97	11.86	-
60	-	-	-	-	13.11	13.10	13.03	12.89	-
65	-	-	-	-	-	14.36	14.26	14.10	-

Mass flow in kg/h

30	151	187	227	273	328	393	472	565	-
35	142	183	225	271	324	386	459	545	-
40	125	172	219	268	321	381	451	531	-
45	-	154	207	260	316	377	445	522	-
50	-	-	187	247	307	371	439	515	-
55	-	-	-	226	293	361	431	508	-
60	-	-	-	-	270	345	420	499	-
65	-	-	-	-	-	320	403	486	-

Coefficient of performance (C.O.P.)

30	1.86	2.31	2.82	3.43	4.18	5.12	6.32	7.87	-
35	1.52	1.96	2.42	2.94	3.56	4.31	5.25	6.43	-
40	1.16	1.60	2.04	2.51	3.03	3.66	4.41	5.34	-
45	-	1.23	1.66	2.10	2.57	3.10	3.72	4.47	-
50	-	-	1.28	1.70	2.14	2.60	3.13	3.76	-
55	-	-	-	1.31	1.72	2.15	2.61	3.14	-
60	-	-	-	-	1.32	1.72	2.13	2.59	-
65	-	-	-	-	-	1.30	1.67	2.07	-

Nominal performance at to = 5 °C, tc = 50 °C

Cooling capacity	18 150	W
Power input	5 790	W
Current consumption	11.08	A
Mass flow	439	kg/h
C.O.P.	3.13	

Pressure switch settings

Maximum HP switch setting	45	bar(g)
Minimum LP switch setting	1.5	bar(g)
LP pump down setting	2.3	bar(g)

Sound power data

Sound power level	71	dB(A)
With acoustic hood	66	dB(A)

to: Evaporating temperature at dew point

tc: Condensing temperature at dew point

Rating conditions : Superheat = 10 K , Subcooling = 0 K

Tolerance according EN12900

Danfoss can accept no responsibility for possible errors in catalogues, brochures and other printed material. Danfoss reserves the right to alter its products without notice. This also applies to products already on order provided that such alternations can be made without subsequential changes being necessary in specifications already agreed. All trademarks in this material are property of the respective companies. Danfoss and the Danfoss logotype are trademarks of Danfoss A/S. All rights reserved.

Performance data at 50 Hz, ARI rating conditions

R410A

Cond. temp. in °C (tc)	Evaporating temperature in °C (to)							
	-25	-20	-15	-10	-5	0	5	10

Cooling capacity in W

30	7 806	9 827	12 087	14 709	17 817	21 534	25 982	31 286	-
35	7 004	9 149	11 426	13 960	16 873	20 289	24 330	29 121	-
40	5 878	8 231	10 611	13 141	15 944	19 143	22 861	27 223	-
45	-	6 990	9 556	12 166	14 943	18 009	21 490	25 506	-
50	-	-	8 175	10 949	13 784	16 803	20 130	23 886	-
55	-	-	-	9 406	12 384	15 439	18 696	22 276	-
60	-	-	-	-	10 656	13 832	17 103	20 591	-
65	-	-	-	-	-	11 895	15 265	18 746	-

Power input in W

30	3 884	3 940	3 973	3 981	3 962	3 911	3 827	3 706	-
35	4 234	4 304	4 354	4 380	4 380	4 351	4 291	4 195	-
40	4 624	4 704	4 765	4 805	4 820	4 808	4 766	4 691	-
45	-	5 149	5 217	5 265	5 291	5 291	5 262	5 203	-
50	-	-	5 718	5 770	5 802	5 809	5 790	5 741	-
55	-	-	-	6 330	6 363	6 373	6 358	6 316	-
60	-	-	-	-	6 984	6 992	6 977	6 936	-
65	-	-	-	-	-	7 675	7 656	7 612	-

Current consumption in A

30	8.94	8.89	8.84	8.80	8.78	8.76	8.76	8.77	-
35	9.24	9.24	9.24	9.23	9.22	9.21	9.19	9.18	-
40	9.63	9.69	9.72	9.74	9.75	9.74	9.71	9.68	-
45	-	10.24	10.32	10.36	10.38	10.37	10.34	10.28	-
50	-	-	11.04	11.11	11.14	11.13	11.08	11.00	-
55	-	-	-	12.00	12.04	12.03	11.97	11.86	-
60	-	-	-	-	13.11	13.10	13.03	12.89	-
65	-	-	-	-	-	14.36	14.26	14.10	-

Mass flow in kg/h

30	150	186	226	272	326	391	468	561	-
35	141	182	224	270	322	383	456	541	-
40	124	171	218	266	319	379	447	527	-
45	-	153	206	259	314	374	442	518	-
50	-	-	186	246	306	368	436	511	-
55	-	-	-	225	291	358	429	504	-
60	-	-	-	-	268	342	417	496	-
65	-	-	-	-	-	318	400	483	-

Coefficient of performance (C.O.P.)

30	2.01	2.49	3.04	3.69	4.50	5.51	6.79	8.44	-
35	1.65	2.13	2.62	3.19	3.85	4.66	5.67	6.94	-
40	1.27	1.75	2.23	2.73	3.31	3.98	4.80	5.80	-
45	-	1.36	1.83	2.31	2.82	3.40	4.08	4.90	-
50	-	-	1.43	1.90	2.38	2.89	3.48	4.16	-
55	-	-	-	1.49	1.95	2.42	2.94	3.53	-
60	-	-	-	-	1.53	1.98	2.45	2.97	-
65	-	-	-	-	-	1.55	1.99	2.46	-

Nominal performance at to = 7.2 °C, tc = 54.4 °C

Cooling capacity	20 408	W
Power input	6 272	W
Current consumption	11.82	A
Mass flow	462	kg/h
C.O.P.	3.25	

Pressure switch settings

Maximum HP switch setting	45	bar(g)
Minimum LP switch setting	1.5	bar(g)
LP pump down setting	2.3	bar(g)

Sound power data

Sound power level	71	dB(A)
With acoustic hood	66	dB(A)

to: Evaporating temperature at dew point

tc: Condensing temperature at dew point

Rating conditions : Superheat = 11.1 K , Subcooling = 8.3 K

Tolerance according EN12900

Danfoss can accept no responsibility for possible errors in catalogues, brochures and other printed material. Danfoss reserves the right to alter its products without notice. This also applies to products already on order provided that such alternations can be made without subsequential changes being necessary in specifications already agreed. All trademarks in this material are property of the respective companies. Danfoss and the Danfoss logotype are trademarks of Danfoss A/S. All rights reserved.

Performance data at 60 Hz, EN 12900 rating conditions

R410A

Cond. temp. in °C (tc)	Evaporating temperature in °C (to)							
	-25	-20	-15	-10	-5	0	5	10

Cooling capacity in W

30	8 576	10 807	13 305	16 208	19 650	23 769	28 702	34 585	-
35	7 653	10 005	12 509	15 300	18 511	22 280	26 742	32 032	-
40	6 383	8 944	11 542	14 310	17 382	20 893	24 977	29 768	-
45	-	7 536	10 312	13 144	16 165	19 507	23 303	27 688	-
50	-	-	8 732	11 709	14 762	18 021	21 618	25 683	-
55	-	-	-	9 918	13 078	16 333	19 810	23 639	-
60	-	-	-	-	11 020	14 334	17 760	21 424	-
65	-	-	-	-	-	11 902	15 315	18 857	-

Power input in W

30	4 658	4 725	4 765	4 775	4 752	4 691	4 590	4 445	-
35	5 081	5 165	5 225	5 256	5 256	5 222	5 149	5 034	-
40	5 553	5 648	5 722	5 769	5 787	5 773	5 722	5 632	-
45	-	6 187	6 268	6 326	6 356	6 356	6 322	6 251	-
50	-	-	6 876	6 938	6 975	6 984	6 961	6 903	-
55	-	-	-	7 617	7 655	7 668	7 650	7 599	-
60	-	-	-	-	8 409	8 418	8 401	8 352	-
65	-	-	-	-	-	9 249	9 225	9 172	-

Current consumption in A

30	7.66	7.72	7.77	7.83	7.90	7.99	8.11	8.26	-
35	8.06	8.14	8.20	8.26	8.33	8.40	8.50	8.61	-
40	8.49	8.60	8.68	8.75	8.82	8.89	8.97	9.07	-
45	-	9.11	9.22	9.32	9.40	9.47	9.55	9.63	-
50	-	-	9.83	9.96	10.06	10.15	10.23	10.31	-
55	-	-	-	10.68	10.82	10.93	11.03	11.11	-
60	-	-	-	-	11.68	11.82	11.94	12.05	-
65	-	-	-	-	-	12.84	12.99	13.12	-

Mass flow in kg/h

30	179	222	270	324	389	467	559	671	-
35	169	217	267	322	385	458	545	647	-
40	149	205	260	318	382	453	535	631	-
45	-	183	246	310	376	448	529	621	-
50	-	-	223	294	366	441	523	613	-
55	-	-	-	270	349	430	515	606	-
60	-	-	-	-	323	411	501	596	-
65	-	-	-	-	-	383	481	581	-

Coefficient of performance (C.O.P.)

30	1.84	2.29	2.79	3.39	4.14	5.07	6.25	7.78	-
35	1.51	1.94	2.39	2.91	3.52	4.27	5.19	6.36	-
40	1.15	1.58	2.02	2.48	3.00	3.62	4.36	5.29	-
45	-	1.22	1.65	2.08	2.54	3.07	3.69	4.43	-
50	-	-	1.27	1.69	2.12	2.58	3.11	3.72	-
55	-	-	-	1.30	1.71	2.13	2.59	3.11	-
60	-	-	-	-	1.31	1.70	2.11	2.57	-
65	-	-	-	-	-	1.29	1.66	2.06	-

Nominal performance at to = 5 °C, tc = 50 °C

Cooling capacity	21 618	W
Power input	6 961	W
Current consumption	10.23	A
Mass flow	523	kg/h
C.O.P.	3.11	

Pressure switch settings

Maximum HP switch setting	45	bar(g)
Minimum LP switch setting	1.5	bar(g)
LP pump down setting	2.3	bar(g)

Sound power data

Sound power level	74	dB(A)
With acoustic hood	69	dB(A)

to: Evaporating temperature at dew point

tc: Condensing temperature at dew point

Rating conditions : Superheat = 10 K , Subcooling = 0 K

Tolerance according EN12900

Danfoss can accept no responsibility for possible errors in catalogues, brochures and other printed material. Danfoss reserves the right to alter its products without notice. This also applies to products already on order provided that such alternations can be made without subsequential changes being necessary in specifications already agreed. All trademarks in this material are property of the respective companies. Danfoss and the Danfoss logotype are trademarks of Danfoss A/S. All rights reserved.

Performance data at 60 Hz, ARI rating conditions

R410A

Cond. temp. in °C (tc)	Evaporating temperature in °C (to)							
	-25	-20	-15	-10	-5	0	5	10

Cooling capacity in W

30	9 262	11 658	14 339	17 451	21 138	25 547	30 823	37 113	-
35	8 318	10 862	13 565	16 574	20 033	24 088	28 886	34 571	-
40	6 993	9 784	12 610	15 616	18 947	22 749	27 168	32 349	-
45	-	8 322	11 370	14 473	17 776	21 425	25 565	30 343	-
50	-	-	9 741	13 042	16 417	20 013	23 975	28 449	-
55	-	-	-	11 219	14 767	18 410	22 294	26 564	-
60	-	-	-	-	12 721	16 512	20 417	24 584	-
65	-	-	-	-	-	14 215	18 243	22 406	-

Power input in W

30	4 658	4 725	4 765	4 775	4 752	4 691	4 590	4 445	-
35	5 081	5 165	5 225	5 256	5 256	5 222	5 149	5 034	-
40	5 553	5 648	5 722	5 769	5 787	5 773	5 722	5 632	-
45	-	6 187	6 268	6 326	6 356	6 356	6 322	6 251	-
50	-	-	6 876	6 938	6 975	6 984	6 961	6 903	-
55	-	-	-	7 617	7 655	7 668	7 650	7 599	-
60	-	-	-	-	8 409	8 418	8 401	8 352	-
65	-	-	-	-	-	9 249	9 225	9 172	-

Current consumption in A

30	7.66	7.72	7.77	7.83	7.90	7.99	8.11	8.26	-
35	8.06	8.14	8.20	8.26	8.33	8.40	8.50	8.61	-
40	8.49	8.60	8.68	8.75	8.82	8.89	8.97	9.07	-
45	-	9.11	9.22	9.32	9.40	9.47	9.55	9.63	-
50	-	-	9.83	9.96	10.06	10.15	10.23	10.31	-
55	-	-	-	10.68	10.82	10.93	11.03	11.11	-
60	-	-	-	-	11.68	11.82	11.94	12.05	-
65	-	-	-	-	-	12.84	12.99	13.12	-

Mass flow in kg/h

30	178	221	268	322	387	463	556	666	-
35	168	216	265	320	383	455	541	642	-
40	148	203	259	316	379	450	532	627	-
45	-	182	245	308	374	445	525	616	-
50	-	-	222	293	364	438	519	609	-
55	-	-	-	268	347	427	511	601	-
60	-	-	-	-	321	409	498	592	-
65	-	-	-	-	-	380	478	577	-

Coefficient of performance (C.O.P.)

30	1.99	2.47	3.01	3.65	4.45	5.45	6.72	8.35	-
35	1.64	2.10	2.60	3.15	3.81	4.61	5.61	6.87	-
40	1.26	1.73	2.20	2.71	3.27	3.94	4.75	5.74	-
45	-	1.35	1.81	2.29	2.80	3.37	4.04	4.85	-
50	-	-	1.42	1.88	2.35	2.87	3.44	4.12	-
55	-	-	-	1.47	1.93	2.40	2.91	3.50	-
60	-	-	-	-	1.51	1.96	2.43	2.94	-
65	-	-	-	-	-	1.54	1.98	2.44	-

Nominal performance at to = 7.2 °C, tc = 54.4 °C

Cooling capacity	24 333	W
Power input	7 546	W
Current consumption	10.96	A
Mass flow	551	kg/h
C.O.P.	3.22	

Pressure switch settings

Maximum HP switch setting	45	bar(g)
Minimum LP switch setting	1.5	bar(g)
LP pump down setting	2.3	bar(g)

Sound power data

Sound power level	74	dB(A)
With acoustic hood	69	dB(A)

to: Evaporating temperature at dew point

tc: Condensing temperature at dew point

Rating conditions : Superheat = 11.1 K , Subcooling = 8.3 K

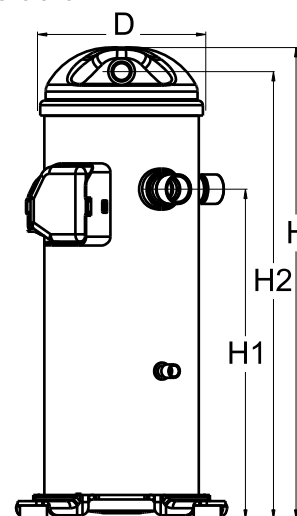
Tolerance according EN12900

Danfoss can accept no responsibility for possible errors in catalogues, brochures and other printed material. Danfoss reserves the right to alter its products without notice. This also applies to products already on order provided that such alternations can be made without subsequential changes being necessary in specifications already agreed. All trademarks in this material are property of the respective companies. Danfoss and the Danfoss logotype are trademarks of Danfoss A/S. All rights reserved.

General Characteristics

Model number (on compressor nameplate)		HLJ083T4LC8
Code number for Singlepack*		120U2172
Code number for Industrial pack**		120U2169
Drawing number		0XR6049B-2
Suction and discharge connections		Brazed
Suction connection		7/8 " ODF
Discharge connection		1/2 " ODF
Oil sight glass		None
Oil equalisation connection		1/2"
Oil drain connection		None
LP gauge port		None
IPR valve		Yes
Swept volume		78.08 cm ³ /rev
Displacement @ Nominal speed		13.6 m ³ /h @ 2900 rpm - 16.4 m ³ /h @ 3500 rpm
Net weight		37.2 kg
Oil charge		1.57 litre, PVE --
Maximum system test pressure Low Side / High side		- bar(g) / - bar(g)
Maximum differential test pressure		- bar
Maximum number of starts per hour		-
Refrigerant charge limit		5.44 kg
Approved refrigerants		R410A

Dimensions

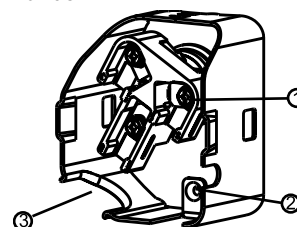


D=183.5 mm
H=455 mm
H1=280 mm
H2=422 mm
H3=- mm

Electrical Characteristics

Nominal voltage	380-415V/3/50Hz - 460V/3/60Hz
Voltage range	342-457 V @ 50Hz - 414-506 V @ 60Hz
Winding resistance between phases 1-2 +/- 7% at 25°C	1.617 Ω
Winding resistance between phases 1-3 +/- 7% at 25°C	1.595 Ω
Winding resistance between phases 2-3 +/- 7% at 25°C	1.630 Ω
Rated Load Amps (RLA)	13 A
Maximum Continuous Current (MCC)	19 A
Locked Rotor Amps (LRA)	100 A
Motor protection	Internal overload protector

Terminal box



IP22

- 1: Screw connectors 10-32 UNF x 9.5
- 2: Earth connection
- 3: Power cable passage

Recommended Installation torques

Oil sight glass	52.5 Nm
Power connections / Earth connection	3 Nm / 2 Nm

Parts shipped with compressor

Mounting kit with grommets and sleeves
Initial oil charge
Installation instructions

Approvals : CE certified, UL certified (file SA11565), -

*Singlepack: Compressor in cardboard box

**Industrial pack: 12 or 16 Unboxed compressors on pallet

Rotolock accessories, suction side

Code no.

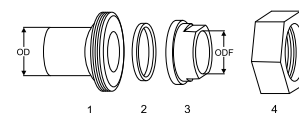
Rotolock valve, V05 (1-1/4" Rotolock, 7/8" ODF)	8168030
Gasket, 1-1/4"	8156131

Rotolock accessories, discharge side

Code no.

Solder sleeve, P06 (1" Rotolock, 1/2" ODF)	8153007
Angle adapter, C06 (1" Rotolock, 1/2" ODF)	8168007
Rotolock valve, V06 (1" Rotolock, 1/2" ODF)	8168031
Gasket, 1"	8156130

Solder sleeve adapter set



- 1: Rotolock adapter (Suc & Dis)
- 2: Gasket (Suc & Dis)
- 3: Solder sleeve (Suc & Dis)
- 4: Rotolock nut (Suc & Dis)

Rotolock accessories, sets

Code no.

Solder sleeve adapter set (1-1/4" Rotolock, 7/8" ODF), (1" Rotolock, 1/2" ODF)	120Z0127
Gasket set, 1", 1-1/4", 1-3/4", OSG gaskets black & white	8156009

Oil / lubricants

Code no.

PVE lubricant, 320HV (FVC68D), 1 litre can	120Z5034
--	----------

Crankcase heaters

Code no.

Belt type crankcase heater, 65 W, 230 V, CE mark, UL	120Z0059
Belt type crankcase heater, 65 W, 400 V, CE mark, UL	120Z0060
Belt type crankcase heater, 70 W, 240 V, CE mark, UL	120Z5040
Belt type crankcase heater, 70 W, 240 V, CE mark, UL	120Z5040

Miscellaneous accessories

Code no.

Acoustic hood	120Z5044
Discharge thermostat kit	7750009
IP54 upgrade kit	118U0057

Spare parts

Code no.

Mounting kit for 1 scroll compressor including 4 grommets, 4 sleeves, 4 bolts, 4 washers	120Z5005
Mounting kit, including 1 bolt, 1 sleeve, 1 washer	120Z5031
Terminal box cover	120Z5018

Performance data at 50 Hz, EN 12900 rating conditions
R410A

Cond. temp. in °C (tc)	Evaporating temperature in °C (to)							
	-25	-20	-15	-10	-5	0	5	10

Cooling capacity in W

30	7 228	9 109	11 215	13 662	16 563	20 035	24 194	29 155	-
35	6 444	8 427	10 537	12 887	15 592	18 766	22 524	26 982	-
40	5 366	7 524	9 712	12 042	14 627	17 581	21 018	25 051	-
45	-	6 330	8 666	11 049	13 588	16 397	19 588	23 274	-
50	-	-	7 328	9 830	12 395	15 131	18 150	21 564	-
55	-	-	-	8 315	10 968	13 698	16 613	19 823	-
60	-	-	-	-	9 230	12 008	14 877	17 944	-
65	-	-	-	-	-	9 959	12 815	15 777	-

Power input in W

30	3 884	3 940	3 973	3 981	3 962	3 911	3 827	3 706	-
35	4 234	4 304	4 354	4 380	4 380	4 351	4 291	4 195	-
40	4 624	4 704	4 765	4 805	4 820	4 808	4 766	4 691	-
45	-	5 149	5 217	5 265	5 291	5 291	5 262	5 203	-
50	-	-	5 718	5 770	5 802	5 809	5 790	5 741	-
55	-	-	-	6 330	6 363	6 373	6 358	6 316	-
60	-	-	-	-	6 984	6 992	6 977	6 936	-
65	-	-	-	-	-	7 675	7 656	7 612	-

Current consumption in A

30	8.94	8.89	8.84	8.80	8.78	8.76	8.76	8.77	-
35	9.24	9.24	9.24	9.23	9.22	9.21	9.19	9.18	-
40	9.63	9.69	9.72	9.74	9.75	9.74	9.71	9.68	-
45	-	10.24	10.32	10.36	10.38	10.37	10.34	10.28	-
50	-	-	11.04	11.11	11.14	11.13	11.08	11.00	-
55	-	-	-	12.00	12.04	12.03	11.97	11.86	-
60	-	-	-	-	13.11	13.10	13.03	12.89	-
65	-	-	-	-	-	14.36	14.26	14.10	-

Mass flow in kg/h

30	151	187	227	273	328	393	472	565	-
35	142	183	225	271	324	386	459	545	-
40	125	172	219	268	321	381	451	531	-
45	-	154	207	260	316	377	445	522	-
50	-	-	187	247	307	371	439	515	-
55	-	-	-	226	293	361	431	508	-
60	-	-	-	-	270	345	420	499	-
65	-	-	-	-	-	320	403	486	-

Coefficient of performance (C.O.P.)

30	1.86	2.31	2.82	3.43	4.18	5.12	6.32	7.87	-
35	1.52	1.96	2.42	2.94	3.56	4.31	5.25	6.43	-
40	1.16	1.60	2.04	2.51	3.03	3.66	4.41	5.34	-
45	-	1.23	1.66	2.10	2.57	3.10	3.72	4.47	-
50	-	-	1.28	1.70	2.14	2.60	3.13	3.76	-
55	-	-	-	1.31	1.72	2.15	2.61	3.14	-
60	-	-	-	-	1.32	1.72	2.13	2.59	-
65	-	-	-	-	-	1.30	1.67	2.07	-

Nominal performance at to = 5 °C, tc = 50 °C

Cooling capacity	18 150	W
Power input	5 790	W
Current consumption	11.08	A
Mass flow	439	kg/h
C.O.P.	3.13	

Pressure switch settings

Maximum HP switch setting	45	bar(g)
Minimum LP switch setting	1.5	bar(g)
LP pump down setting	2.3	bar(g)

Sound power data

Sound power level	71	dB(A)
With acoustic hood	66	dB(A)

to: Evaporating temperature at dew point

tc: Condensing temperature at dew point

Rating conditions : Superheat = 10 K , Subcooling = 0 K

Tolerance according EN12900

Danfoss can accept no responsibility for possible errors in catalogues, brochures and other printed material. Danfoss reserves the right to alter its products without notice. This also applies to products already on order provided that such alternations can be made without subsequential changes being necessary in specifications already agreed. All trademarks in this material are property of the respective companies. Danfoss and the Danfoss logotype are trademarks of Danfoss A/S. All rights reserved.

Performance data at 50 Hz, ARI rating conditions

R410A

Cond. temp. in °C (tc)	Evaporating temperature in °C (to)							
	-25	-20	-15	-10	-5	0	5	10

Cooling capacity in W

30	7 806	9 827	12 087	14 709	17 817	21 534	25 982	31 286	-
35	7 004	9 149	11 426	13 960	16 873	20 289	24 330	29 121	-
40	5 878	8 231	10 611	13 141	15 944	19 143	22 861	27 223	-
45	-	6 990	9 556	12 166	14 943	18 009	21 490	25 506	-
50	-	-	8 175	10 949	13 784	16 803	20 130	23 886	-
55	-	-	-	9 406	12 384	15 439	18 696	22 276	-
60	-	-	-	-	10 656	13 832	17 103	20 591	-
65	-	-	-	-	-	11 895	15 265	18 746	-

Power input in W

30	3 884	3 940	3 973	3 981	3 962	3 911	3 827	3 706	-
35	4 234	4 304	4 354	4 380	4 380	4 351	4 291	4 195	-
40	4 624	4 704	4 765	4 805	4 820	4 808	4 766	4 691	-
45	-	5 149	5 217	5 265	5 291	5 291	5 262	5 203	-
50	-	-	5 718	5 770	5 802	5 809	5 790	5 741	-
55	-	-	-	6 330	6 363	6 373	6 358	6 316	-
60	-	-	-	-	6 984	6 992	6 977	6 936	-
65	-	-	-	-	-	7 675	7 656	7 612	-

Current consumption in A

30	8.94	8.89	8.84	8.80	8.78	8.76	8.76	8.77	-
35	9.24	9.24	9.24	9.23	9.22	9.21	9.19	9.18	-
40	9.63	9.69	9.72	9.74	9.75	9.74	9.71	9.68	-
45	-	10.24	10.32	10.36	10.38	10.37	10.34	10.28	-
50	-	-	11.04	11.11	11.14	11.13	11.08	11.00	-
55	-	-	-	12.00	12.04	12.03	11.97	11.86	-
60	-	-	-	-	13.11	13.10	13.03	12.89	-
65	-	-	-	-	-	14.36	14.26	14.10	-

Mass flow in kg/h

30	150	186	226	272	326	391	468	561	-
35	141	182	224	270	322	383	456	541	-
40	124	171	218	266	319	379	447	527	-
45	-	153	206	259	314	374	442	518	-
50	-	-	186	246	306	368	436	511	-
55	-	-	-	225	291	358	429	504	-
60	-	-	-	-	268	342	417	496	-
65	-	-	-	-	-	318	400	483	-

Coefficient of performance (C.O.P.)

30	2.01	2.49	3.04	3.69	4.50	5.51	6.79	8.44	-
35	1.65	2.13	2.62	3.19	3.85	4.66	5.67	6.94	-
40	1.27	1.75	2.23	2.73	3.31	3.98	4.80	5.80	-
45	-	1.36	1.83	2.31	2.82	3.40	4.08	4.90	-
50	-	-	1.43	1.90	2.38	2.89	3.48	4.16	-
55	-	-	-	1.49	1.95	2.42	2.94	3.53	-
60	-	-	-	-	1.53	1.98	2.45	2.97	-
65	-	-	-	-	-	1.55	1.99	2.46	-

Nominal performance at to = 7.2 °C, tc = 54.4 °C

Cooling capacity	20 408	W
Power input	6 272	W
Current consumption	11.82	A
Mass flow	462	kg/h
C.O.P.	3.25	

Pressure switch settings

Maximum HP switch setting	45	bar(g)
Minimum LP switch setting	1.5	bar(g)
LP pump down setting	2.3	bar(g)

Sound power data

Sound power level	71	dB(A)
With acoustic hood	66	dB(A)

to: Evaporating temperature at dew point

tc: Condensing temperature at dew point

Rating conditions : Superheat = 11.1 K , Subcooling = 8.3 K

Tolerance according EN12900

Danfoss can accept no responsibility for possible errors in catalogues, brochures and other printed material. Danfoss reserves the right to alter its products without notice. This also applies to products already on order provided that such alternations can be made without subsequential changes being necessary in specifications already agreed. All trademarks in this material are property of the respective companies. Danfoss and the Danfoss logotype are trademarks of Danfoss A/S. All rights reserved.

Performance data at 60 Hz, EN 12900 rating conditions

R410A

Cond. temp. in °C (tc)	Evaporating temperature in °C (to)							
	-25	-20	-15	-10	-5	0	5	10

Cooling capacity in W

30	8 576	10 807	13 305	16 208	19 650	23 769	28 702	34 585	-
35	7 653	10 005	12 509	15 300	18 511	22 280	26 742	32 032	-
40	6 383	8 944	11 542	14 310	17 382	20 893	24 977	29 768	-
45	-	7 536	10 312	13 144	16 165	19 507	23 303	27 688	-
50	-	-	8 732	11 709	14 762	18 021	21 618	25 683	-
55	-	-	-	9 918	13 078	16 333	19 810	23 639	-
60	-	-	-	-	11 020	14 334	17 760	21 424	-
65	-	-	-	-	-	11 902	15 315	18 857	-

Power input in W

30	4 658	4 725	4 765	4 775	4 752	4 691	4 590	4 445	-
35	5 081	5 165	5 225	5 256	5 256	5 222	5 149	5 034	-
40	5 553	5 648	5 722	5 769	5 787	5 773	5 722	5 632	-
45	-	6 187	6 268	6 326	6 356	6 356	6 322	6 251	-
50	-	-	6 876	6 938	6 975	6 984	6 961	6 903	-
55	-	-	-	7 617	7 655	7 668	7 650	7 599	-
60	-	-	-	-	8 409	8 418	8 401	8 352	-
65	-	-	-	-	-	9 249	9 225	9 172	-

Current consumption in A

30	7.66	7.72	7.77	7.83	7.90	7.99	8.11	8.26	-
35	8.06	8.14	8.20	8.26	8.33	8.40	8.50	8.61	-
40	8.49	8.60	8.68	8.75	8.82	8.89	8.97	9.07	-
45	-	9.11	9.22	9.32	9.40	9.47	9.55	9.63	-
50	-	-	9.83	9.96	10.06	10.15	10.23	10.31	-
55	-	-	-	10.68	10.82	10.93	11.03	11.11	-
60	-	-	-	-	11.68	11.82	11.94	12.05	-
65	-	-	-	-	-	12.84	12.99	13.12	-

Mass flow in kg/h

30	179	222	270	324	389	467	559	671	-
35	169	217	267	322	385	458	545	647	-
40	149	205	260	318	382	453	535	631	-
45	-	183	246	310	376	448	529	621	-
50	-	-	223	294	366	441	523	613	-
55	-	-	-	270	349	430	515	606	-
60	-	-	-	-	323	411	501	596	-
65	-	-	-	-	-	383	481	581	-

Coefficient of performance (C.O.P.)

30	1.84	2.29	2.79	3.39	4.14	5.07	6.25	7.78	-
35	1.51	1.94	2.39	2.91	3.52	4.27	5.19	6.36	-
40	1.15	1.58	2.02	2.48	3.00	3.62	4.36	5.29	-
45	-	1.22	1.65	2.08	2.54	3.07	3.69	4.43	-
50	-	-	1.27	1.69	2.12	2.58	3.11	3.72	-
55	-	-	-	1.30	1.71	2.13	2.59	3.11	-
60	-	-	-	-	1.31	1.70	2.11	2.57	-
65	-	-	-	-	-	1.29	1.66	2.06	-

Nominal performance at to = 5 °C, tc = 50 °C

Cooling capacity	21 618	W
Power input	6 961	W
Current consumption	10.23	A
Mass flow	523	kg/h
C.O.P.	3.11	

Pressure switch settings

Maximum HP switch setting	45	bar(g)
Minimum LP switch setting	1.5	bar(g)
LP pump down setting	2.3	bar(g)

Sound power data

Sound power level	74	dB(A)
With acoustic hood	69	dB(A)

to: Evaporating temperature at dew point

tc: Condensing temperature at dew point

Rating conditions : Superheat = 10 K , Subcooling = 0 K

Tolerance according EN12900

Danfoss can accept no responsibility for possible errors in catalogues, brochures and other printed material. Danfoss reserves the right to alter its products without notice. This also applies to products already on order provided that such alternations can be made without subsequential changes being necessary in specifications already agreed. All trademarks in this material are property of the respective companies. Danfoss and the Danfoss logotype are trademarks of Danfoss A/S. All rights reserved.

Performance data at 60 Hz, ARI rating conditions

R410A

Cond. temp. in °C (tc)	Evaporating temperature in °C (to)							
	-25	-20	-15	-10	-5	0	5	10

Cooling capacity in W

30	9 262	11 658	14 339	17 451	21 138	25 547	30 823	37 113	-
35	8 318	10 862	13 565	16 574	20 033	24 088	28 886	34 571	-
40	6 993	9 784	12 610	15 616	18 947	22 749	27 168	32 349	-
45	-	8 322	11 370	14 473	17 776	21 425	25 565	30 343	-
50	-	-	9 741	13 042	16 417	20 013	23 975	28 449	-
55	-	-	-	11 219	14 767	18 410	22 294	26 564	-
60	-	-	-	-	12 721	16 512	20 417	24 584	-
65	-	-	-	-	-	14 215	18 243	22 406	-

Power input in W

30	4 658	4 725	4 765	4 775	4 752	4 691	4 590	4 445	-
35	5 081	5 165	5 225	5 256	5 256	5 222	5 149	5 034	-
40	5 553	5 648	5 722	5 769	5 787	5 773	5 722	5 632	-
45	-	6 187	6 268	6 326	6 356	6 356	6 322	6 251	-
50	-	-	6 876	6 938	6 975	6 984	6 961	6 903	-
55	-	-	-	7 617	7 655	7 668	7 650	7 599	-
60	-	-	-	-	8 409	8 418	8 401	8 352	-
65	-	-	-	-	-	9 249	9 225	9 172	-

Current consumption in A

30	7.66	7.72	7.77	7.83	7.90	7.99	8.11	8.26	-
35	8.06	8.14	8.20	8.26	8.33	8.40	8.50	8.61	-
40	8.49	8.60	8.68	8.75	8.82	8.89	8.97	9.07	-
45	-	9.11	9.22	9.32	9.40	9.47	9.55	9.63	-
50	-	-	9.83	9.96	10.06	10.15	10.23	10.31	-
55	-	-	-	10.68	10.82	10.93	11.03	11.11	-
60	-	-	-	-	11.68	11.82	11.94	12.05	-
65	-	-	-	-	-	12.84	12.99	13.12	-

Mass flow in kg/h

30	178	221	268	322	387	463	556	666	-
35	168	216	265	320	383	455	541	642	-
40	148	203	259	316	379	450	532	627	-
45	-	182	245	308	374	445	525	616	-
50	-	-	222	293	364	438	519	609	-
55	-	-	-	268	347	427	511	601	-
60	-	-	-	-	321	409	498	592	-
65	-	-	-	-	-	380	478	577	-

Coefficient of performance (C.O.P.)

30	1.99	2.47	3.01	3.65	4.45	5.45	6.72	8.35	-
35	1.64	2.10	2.60	3.15	3.81	4.61	5.61	6.87	-
40	1.26	1.73	2.20	2.71	3.27	3.94	4.75	5.74	-
45	-	1.35	1.81	2.29	2.80	3.37	4.04	4.85	-
50	-	-	1.42	1.88	2.35	2.87	3.44	4.12	-
55	-	-	-	1.47	1.93	2.40	2.91	3.50	-
60	-	-	-	-	1.51	1.96	2.43	2.94	-
65	-	-	-	-	-	1.54	1.98	2.44	-

Nominal performance at to = 7.2 °C, tc = 54.4 °C

Cooling capacity	24 333	W
Power input	7 546	W
Current consumption	10.96	A
Mass flow	551	kg/h
C.O.P.	3.22	

Pressure switch settings

Maximum HP switch setting	45	bar(g)
Minimum LP switch setting	1.5	bar(g)
LP pump down setting	2.3	bar(g)

Sound power data

Sound power level	74	dB(A)
With acoustic hood	69	dB(A)

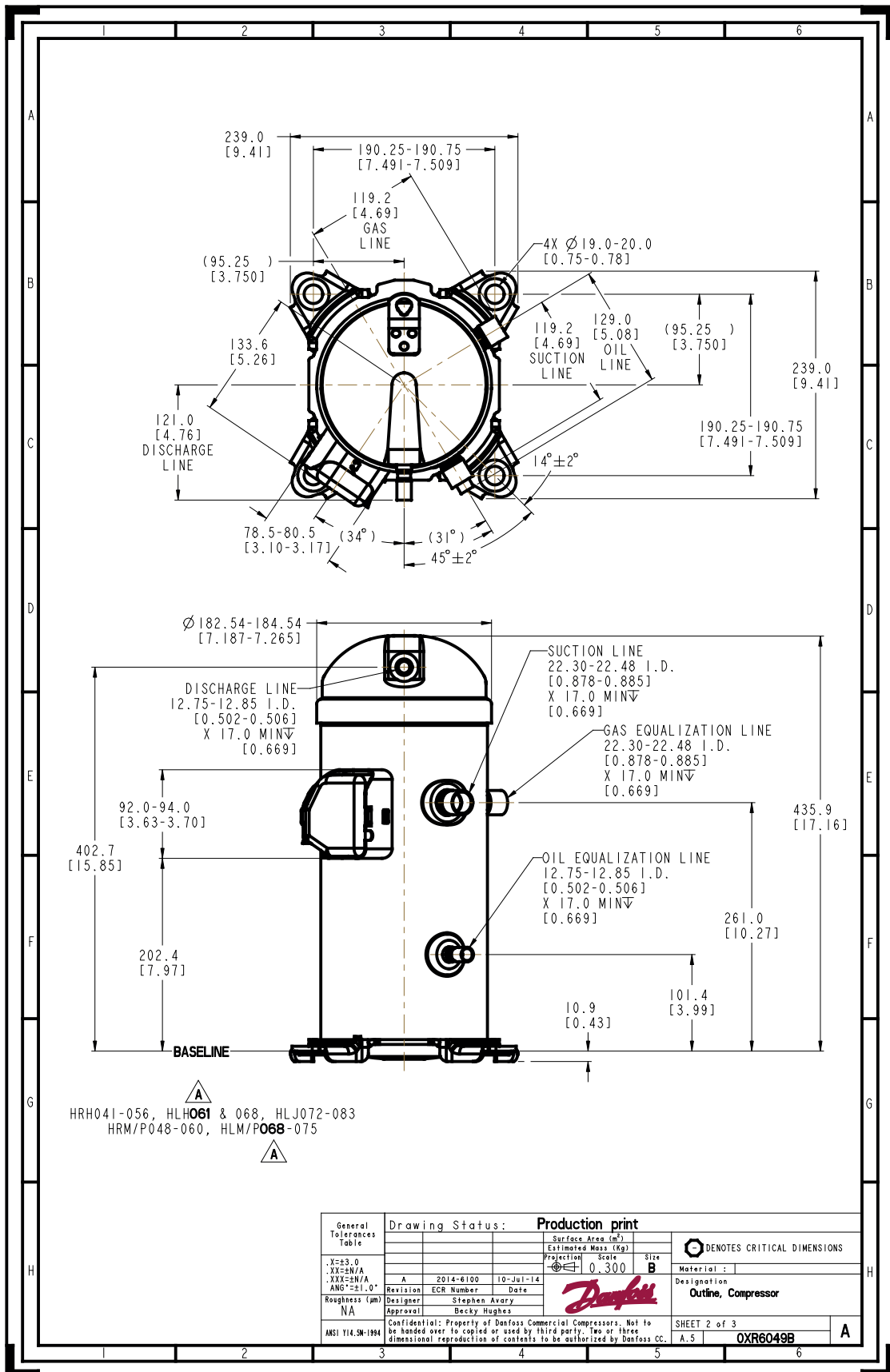
to: Evaporating temperature at dew point

tc: Condensing temperature at dew point

Rating conditions : Superheat = 11.1 K , Subcooling = 8.3 K

Tolerance according EN12900

Danfoss can accept no responsibility for possible errors in catalogues, brochures and other printed material. Danfoss reserves the right to alter its products without notice. This also applies to products already on order provided that such alternations can be made without subsequential changes being necessary in specifications already agreed. All trademarks in this material are property of the respective companies. Danfoss and the Danfoss logotype are trademarks of Danfoss A/S. All rights reserved.



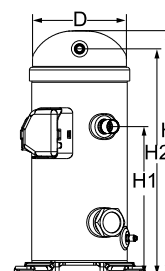
General Tolerances Table	Drawing Status: Production print			Surface Area (m ²)	DENOTES CRITICAL DIMENSIONS
				Estimated Mass (kg)	
Y=±3.0				Projection Scale	Size B
XX=±N/A				0.300	Material:
ANG=±1.0°	Revision	ECR Number	Date	Designation	
Roughness (µm)	NA	Designer	Stephen Avary	Outline, Compressor	
	Approval	Becky Hughes		SHEET 2 of 3	
ANSI Y14.5M-1994	Confidential: Property of Danfoss Commercial Compressors. Not to be handed over, copied or used by third party. Two or three dimensional reproduction of contents to be authorized by Danfoss CC.			A.5	OXR6049B

Danfoss can accept no responsibility for possible errors in catalogues, brochures and other printed material. Danfoss reserves the right to alter its products without notice. This also applies to products already on order provided that such alternations can be made without consequential changes being necessary in specifications already agreed. All trademarks in this material are property of the respective companies. Danfoss, the Danfoss logotype and Maneurop are trademarks of Danfoss A/S. All rights reserved.

General Characteristics

Model number (on compressor nameplate)		HLJ083T4LCT
Code number for Singlepack*		121L3175
Code number for Industrial pack**		121L3174
Drawing number		0XR6089B-5
Suction and discharge connections		Brazed
Suction connection		7/8 " ODF
Discharge connection		1/2 " ODF
Oil sight glass		None
Oil equalisation connection		1-1/8" Rotolock
Oil drain connection		Schrader
LP gauge port		None
IPR valve		Yes
Swept volume		78.08 cm ³ /rev
Displacement @ Nominal speed		13.6 m ³ /h @ 2900 rpm - 16.4 m ³ /h @ 3500 rpm
Net weight		37.2 kg
Oil charge		1.57 litre, PVE --
Maximum system test pressure Low Side / High side		- bar(g) / - bar(g)
Maximum differential test pressure		- bar
Maximum number of starts per hour		-
Refrigerant charge limit		5.44 kg
Approved refrigerants		R410A

Dimensions

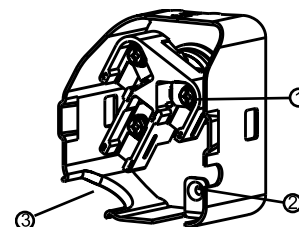


D=183.5 mm
H=446.8 mm
H1=271.9 mm
H2=413.6 mm
H3=- mm

Electrical Characteristics

Nominal voltage	380-415V/3/50Hz - 460V/3/60Hz
Voltage range	342-457 V @ 50Hz - 414-506 V @ 60Hz
Winding resistance between phases 1-2 +/- 7% at 25°C	1.617 Ω
Winding resistance between phases 1-3 +/- 7% at 25°C	1.595 Ω
Winding resistance between phases 2-3 +/- 7% at 25°C	1.630 Ω
Rated Load Amps (RLA)	13 A
Maximum Continuous Current (MCC)	19 A
Locked Rotor Amps (LRA)	100 A
Motor protection	Internal overload protector

Terminal box



IP22

- 1: Screw connectors 10-32 UNF x 9.5
- 2: Earth connection
- 3: Power cable passage

Recommended Installation torques

Oil sight glass	52.5 Nm
Power connections / Earth connection	3 Nm / 2 Nm

Parts shipped with compressor

Mounting kit with grommets and sleeves
Initial oil charge
Installation instructions

Approvals : CE certified, UL certified (file SA11565), -

*Singlepack: Compressor in cardboard box

**Industrial pack: 12 or 16 Unboxed compressors on pallet

Rotolock accessories, suction side

Code no.

Rotolock valve, V05 (1-1/4" Rotolock, 7/8" ODF)	8168030
Gasket, 1-1/4"	8156131

Rotolock accessories, discharge side

Code no.

Solder sleeve, P06 (1" Rotolock, 1/2" ODF)	8153007
Angle adapter, C06 (1" Rotolock, 1/2" ODF)	8168007
Rotolock valve, V06 (1" Rotolock, 1/2" ODF)	8168031
Gasket, 1"	8156130

Rotolock accessories, sets

Code no.

Solder sleeve adapter set (1-1/4" Rotolock, 7/8" ODF), (1" Rotolock, 1/2" ODF)	120Z0127
Gasket set, 1", 1-1/4", 1-3/4", OSG gaskets black & white	8156009

Oil / lubricants

Code no.

PVE lubricant, 320HV (FVC68D), 1 litre can	120Z5034
--	----------

Crankcase heaters

Code no.

Belt type crankcase heater, 65 W, 230 V, CE mark, UL	120Z0059
Belt type crankcase heater, 65 W, 400 V, CE mark, UL	120Z0060
Belt type crankcase heater, 70 W, 240 V, CE mark, UL	120Z5040
Belt type crankcase heater, 70 W, 240 V, CE mark, UL	120Z5040

Miscellaneous accessories

Code no.

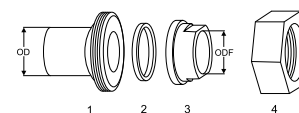
Acoustic hood	120Z5044
Discharge thermostat kit	7750009
IP54 upgrade kit	118U0057

Spare parts

Code no.

Mounting kit for 1 scroll compressor including 4 grommets, 4 sleeves, 4 bolts, 4 washers	120Z5005
Mounting kit, including 1 bolt, 1 sleeve, 1 washer	120Z5031
Terminal box cover	120Z5018

Solder sleeve adapter set



- 1: Rotolock adapter (Suc & Dis)
- 2: Gasket (Suc & Dis)
- 3: Solder sleeve (Suc & Dis)
- 4: Rotolock nut (Suc & Dis)

Performance data at 50 Hz, EN 12900 rating conditions
R410A

Cond. temp. in °C (tc)	Evaporating temperature in °C (to)							
	-25	-20	-15	-10	-5	0	5	10

Cooling capacity in W

30	7 228	9 109	11 215	13 662	16 563	20 035	24 194	29 155	-
35	6 444	8 427	10 537	12 887	15 592	18 766	22 524	26 982	-
40	5 366	7 524	9 712	12 042	14 627	17 581	21 018	25 051	-
45	-	6 330	8 666	11 049	13 588	16 397	19 588	23 274	-
50	-	-	7 328	9 830	12 395	15 131	18 150	21 564	-
55	-	-	-	8 315	10 968	13 698	16 613	19 823	-
60	-	-	-	-	9 230	12 008	14 877	17 944	-
65	-	-	-	-	-	9 959	12 815	15 777	-

Power input in W

30	3 884	3 940	3 973	3 981	3 962	3 911	3 827	3 706	-
35	4 234	4 304	4 354	4 380	4 380	4 351	4 291	4 195	-
40	4 624	4 704	4 765	4 805	4 820	4 808	4 766	4 691	-
45	-	5 149	5 217	5 265	5 291	5 291	5 262	5 203	-
50	-	-	5 718	5 770	5 802	5 809	5 790	5 741	-
55	-	-	-	6 330	6 363	6 373	6 358	6 316	-
60	-	-	-	-	6 984	6 992	6 977	6 936	-
65	-	-	-	-	-	7 675	7 656	7 612	-

Current consumption in A

30	8.94	8.89	8.84	8.80	8.78	8.76	8.76	8.77	-
35	9.24	9.24	9.24	9.23	9.22	9.21	9.19	9.18	-
40	9.63	9.69	9.72	9.74	9.75	9.74	9.71	9.68	-
45	-	10.24	10.32	10.36	10.38	10.37	10.34	10.28	-
50	-	-	11.04	11.11	11.14	11.13	11.08	11.00	-
55	-	-	-	12.00	12.04	12.03	11.97	11.86	-
60	-	-	-	-	13.11	13.10	13.03	12.89	-
65	-	-	-	-	-	14.36	14.26	14.10	-

Mass flow in kg/h

30	151	187	227	273	328	393	472	565	-
35	142	183	225	271	324	386	459	545	-
40	125	172	219	268	321	381	451	531	-
45	-	154	207	260	316	377	445	522	-
50	-	-	187	247	307	371	439	515	-
55	-	-	-	226	293	361	431	508	-
60	-	-	-	-	270	345	420	499	-
65	-	-	-	-	-	320	403	486	-

Coefficient of performance (C.O.P.)

30	1.86	2.31	2.82	3.43	4.18	5.12	6.32	7.87	-
35	1.52	1.96	2.42	2.94	3.56	4.31	5.25	6.43	-
40	1.16	1.60	2.04	2.51	3.03	3.66	4.41	5.34	-
45	-	1.23	1.66	2.10	2.57	3.10	3.72	4.47	-
50	-	-	1.28	1.70	2.14	2.60	3.13	3.76	-
55	-	-	-	1.31	1.72	2.15	2.61	3.14	-
60	-	-	-	-	1.32	1.72	2.13	2.59	-
65	-	-	-	-	-	1.30	1.67	2.07	-

Nominal performance at to = 5 °C, tc = 50 °C

Cooling capacity	18 150	W
Power input	5 790	W
Current consumption	11.08	A
Mass flow	439	kg/h
C.O.P.	3.13	

Pressure switch settings

Maximum HP switch setting	45	bar(g)
Minimum LP switch setting	1.5	bar(g)
LP pump down setting	2.3	bar(g)

Sound power data

Sound power level	71	dB(A)
With acoustic hood	66	dB(A)

to: Evaporating temperature at dew point

tc: Condensing temperature at dew point

Rating conditions : Superheat = 10 K , Subcooling = 0 K

Tolerance according EN12900

Danfoss can accept no responsibility for possible errors in catalogues, brochures and other printed material. Danfoss reserves the right to alter its products without notice. This also applies to products already on order provided that such alternations can be made without subsequential changes being necessary in specifications already agreed. All trademarks in this material are property of the respective companies. Danfoss and the Danfoss logotype are trademarks of Danfoss A/S. All rights reserved.

Performance data at 50 Hz, ARI rating conditions

R410A

Cond. temp. in °C (tc)	Evaporating temperature in °C (to)							
	-25	-20	-15	-10	-5	0	5	10

Cooling capacity in W

30	7 806	9 827	12 087	14 709	17 817	21 534	25 982	31 286	-
35	7 004	9 149	11 426	13 960	16 873	20 289	24 330	29 121	-
40	5 878	8 231	10 611	13 141	15 944	19 143	22 861	27 223	-
45	-	6 990	9 556	12 166	14 943	18 009	21 490	25 506	-
50	-	-	8 175	10 949	13 784	16 803	20 130	23 886	-
55	-	-	-	9 406	12 384	15 439	18 696	22 276	-
60	-	-	-	-	10 656	13 832	17 103	20 591	-
65	-	-	-	-	-	11 895	15 265	18 746	-

Power input in W

30	3 884	3 940	3 973	3 981	3 962	3 911	3 827	3 706	-
35	4 234	4 304	4 354	4 380	4 380	4 351	4 291	4 195	-
40	4 624	4 704	4 765	4 805	4 820	4 808	4 766	4 691	-
45	-	5 149	5 217	5 265	5 291	5 291	5 262	5 203	-
50	-	-	5 718	5 770	5 802	5 809	5 790	5 741	-
55	-	-	-	6 330	6 363	6 373	6 358	6 316	-
60	-	-	-	-	6 984	6 992	6 977	6 936	-
65	-	-	-	-	-	7 675	7 656	7 612	-

Current consumption in A

30	8.94	8.89	8.84	8.80	8.78	8.76	8.76	8.77	-
35	9.24	9.24	9.24	9.23	9.22	9.21	9.19	9.18	-
40	9.63	9.69	9.72	9.74	9.75	9.74	9.71	9.68	-
45	-	10.24	10.32	10.36	10.38	10.37	10.34	10.28	-
50	-	-	11.04	11.11	11.14	11.13	11.08	11.00	-
55	-	-	-	12.00	12.04	12.03	11.97	11.86	-
60	-	-	-	-	13.11	13.10	13.03	12.89	-
65	-	-	-	-	-	14.36	14.26	14.10	-

Mass flow in kg/h

30	150	186	226	272	326	391	468	561	-
35	141	182	224	270	322	383	456	541	-
40	124	171	218	266	319	379	447	527	-
45	-	153	206	259	314	374	442	518	-
50	-	-	186	246	306	368	436	511	-
55	-	-	-	225	291	358	429	504	-
60	-	-	-	-	268	342	417	496	-
65	-	-	-	-	-	318	400	483	-

Coefficient of performance (C.O.P.)

30	2.01	2.49	3.04	3.69	4.50	5.51	6.79	8.44	-
35	1.65	2.13	2.62	3.19	3.85	4.66	5.67	6.94	-
40	1.27	1.75	2.23	2.73	3.31	3.98	4.80	5.80	-
45	-	1.36	1.83	2.31	2.82	3.40	4.08	4.90	-
50	-	-	1.43	1.90	2.38	2.89	3.48	4.16	-
55	-	-	-	1.49	1.95	2.42	2.94	3.53	-
60	-	-	-	-	1.53	1.98	2.45	2.97	-
65	-	-	-	-	-	1.55	1.99	2.46	-

Nominal performance at to = 7.2 °C, tc = 54.4 °C

Cooling capacity	20 408	W
Power input	6 272	W
Current consumption	11.82	A
Mass flow	462	kg/h
C.O.P.	3.25	

Pressure switch settings

Maximum HP switch setting	45	bar(g)
Minimum LP switch setting	1.5	bar(g)
LP pump down setting	2.3	bar(g)

Sound power data

Sound power level	71	dB(A)
With acoustic hood	66	dB(A)

to: Evaporating temperature at dew point

tc: Condensing temperature at dew point

Rating conditions : Superheat = 11.1 K , Subcooling = 8.3 K

Tolerance according EN12900

Danfoss can accept no responsibility for possible errors in catalogues, brochures and other printed material. Danfoss reserves the right to alter its products without notice. This also applies to products already on order provided that such alternations can be made without subsequential changes being necessary in specifications already agreed. All trademarks in this material are property of the respective companies. Danfoss and the Danfoss logotype are trademarks of Danfoss A/S. All rights reserved.

Performance data at 60 Hz, EN 12900 rating conditions

R410A

Cond. temp. in °C (tc)	Evaporating temperature in °C (to)							
	-25	-20	-15	-10	-5	0	5	10

Cooling capacity in W

30	8 576	10 807	13 305	16 208	19 650	23 769	28 702	34 585	-
35	7 653	10 005	12 509	15 300	18 511	22 280	26 742	32 032	-
40	6 383	8 944	11 542	14 310	17 382	20 893	24 977	29 768	-
45	-	7 536	10 312	13 144	16 165	19 507	23 303	27 688	-
50	-	-	8 732	11 709	14 762	18 021	21 618	25 683	-
55	-	-	-	9 918	13 078	16 333	19 810	23 639	-
60	-	-	-	-	11 020	14 334	17 760	21 424	-
65	-	-	-	-	-	11 902	15 315	18 857	-

Power input in W

30	4 658	4 725	4 765	4 775	4 752	4 691	4 590	4 445	-
35	5 081	5 165	5 225	5 256	5 256	5 222	5 149	5 034	-
40	5 553	5 648	5 722	5 769	5 787	5 773	5 722	5 632	-
45	-	6 187	6 268	6 326	6 356	6 356	6 322	6 251	-
50	-	-	6 876	6 938	6 975	6 984	6 961	6 903	-
55	-	-	-	7 617	7 655	7 668	7 650	7 599	-
60	-	-	-	-	8 409	8 418	8 401	8 352	-
65	-	-	-	-	-	9 249	9 225	9 172	-

Current consumption in A

30	7.66	7.72	7.77	7.83	7.90	7.99	8.11	8.26	-
35	8.06	8.14	8.20	8.26	8.33	8.40	8.50	8.61	-
40	8.49	8.60	8.68	8.75	8.82	8.89	8.97	9.07	-
45	-	9.11	9.22	9.32	9.40	9.47	9.55	9.63	-
50	-	-	9.83	9.96	10.06	10.15	10.23	10.31	-
55	-	-	-	10.68	10.82	10.93	11.03	11.11	-
60	-	-	-	-	11.68	11.82	11.94	12.05	-
65	-	-	-	-	-	12.84	12.99	13.12	-

Mass flow in kg/h

30	179	222	270	324	389	467	559	671	-
35	169	217	267	322	385	458	545	647	-
40	149	205	260	318	382	453	535	631	-
45	-	183	246	310	376	448	529	621	-
50	-	-	223	294	366	441	523	613	-
55	-	-	-	270	349	430	515	606	-
60	-	-	-	-	323	411	501	596	-
65	-	-	-	-	-	383	481	581	-

Coefficient of performance (C.O.P.)

30	1.84	2.29	2.79	3.39	4.14	5.07	6.25	7.78	-
35	1.51	1.94	2.39	2.91	3.52	4.27	5.19	6.36	-
40	1.15	1.58	2.02	2.48	3.00	3.62	4.36	5.29	-
45	-	1.22	1.65	2.08	2.54	3.07	3.69	4.43	-
50	-	-	1.27	1.69	2.12	2.58	3.11	3.72	-
55	-	-	-	1.30	1.71	2.13	2.59	3.11	-
60	-	-	-	-	1.31	1.70	2.11	2.57	-
65	-	-	-	-	-	1.29	1.66	2.06	-

Nominal performance at to = 5 °C, tc = 50 °C

Cooling capacity	21 618	W
Power input	6 961	W
Current consumption	10.23	A
Mass flow	523	kg/h
C.O.P.	3.11	

Pressure switch settings

Maximum HP switch setting	45	bar(g)
Minimum LP switch setting	1.5	bar(g)
LP pump down setting	2.3	bar(g)

Sound power data

Sound power level	74	dB(A)
With acoustic hood	69	dB(A)

to: Evaporating temperature at dew point

tc: Condensing temperature at dew point

Rating conditions : Superheat = 10 K , Subcooling = 0 K

Tolerance according EN12900

Danfoss can accept no responsibility for possible errors in catalogues, brochures and other printed material. Danfoss reserves the right to alter its products without notice. This also applies to products already on order provided that such alternations can be made without subsequential changes being necessary in specifications already agreed. All trademarks in this material are property of the respective companies. Danfoss and the Danfoss logotype are trademarks of Danfoss A/S. All rights reserved.

Performance data at 60 Hz, ARI rating conditions

R410A

Cond. temp. in °C (tc)	Evaporating temperature in °C (to)							
	-25	-20	-15	-10	-5	0	5	10

Cooling capacity in W

30	9 262	11 658	14 339	17 451	21 138	25 547	30 823	37 113	-
35	8 318	10 862	13 565	16 574	20 033	24 088	28 886	34 571	-
40	6 993	9 784	12 610	15 616	18 947	22 749	27 168	32 349	-
45	-	8 322	11 370	14 473	17 776	21 425	25 565	30 343	-
50	-	-	9 741	13 042	16 417	20 013	23 975	28 449	-
55	-	-	-	11 219	14 767	18 410	22 294	26 564	-
60	-	-	-	-	12 721	16 512	20 417	24 584	-
65	-	-	-	-	-	14 215	18 243	22 406	-

Power input in W

30	4 658	4 725	4 765	4 775	4 752	4 691	4 590	4 445	-
35	5 081	5 165	5 225	5 256	5 256	5 222	5 149	5 034	-
40	5 553	5 648	5 722	5 769	5 787	5 773	5 722	5 632	-
45	-	6 187	6 268	6 326	6 356	6 356	6 322	6 251	-
50	-	-	6 876	6 938	6 975	6 984	6 961	6 903	-
55	-	-	-	7 617	7 655	7 668	7 650	7 599	-
60	-	-	-	-	8 409	8 418	8 401	8 352	-
65	-	-	-	-	-	9 249	9 225	9 172	-

Current consumption in A

30	7.66	7.72	7.77	7.83	7.90	7.99	8.11	8.26	-
35	8.06	8.14	8.20	8.26	8.33	8.40	8.50	8.61	-
40	8.49	8.60	8.68	8.75	8.82	8.89	8.97	9.07	-
45	-	9.11	9.22	9.32	9.40	9.47	9.55	9.63	-
50	-	-	9.83	9.96	10.06	10.15	10.23	10.31	-
55	-	-	-	10.68	10.82	10.93	11.03	11.11	-
60	-	-	-	-	11.68	11.82	11.94	12.05	-
65	-	-	-	-	-	12.84	12.99	13.12	-

Mass flow in kg/h

30	178	221	268	322	387	463	556	666	-
35	168	216	265	320	383	455	541	642	-
40	148	203	259	316	379	450	532	627	-
45	-	182	245	308	374	445	525	616	-
50	-	-	222	293	364	438	519	609	-
55	-	-	-	268	347	427	511	601	-
60	-	-	-	-	321	409	498	592	-
65	-	-	-	-	-	380	478	577	-

Coefficient of performance (C.O.P.)

30	1.99	2.47	3.01	3.65	4.45	5.45	6.72	8.35	-
35	1.64	2.10	2.60	3.15	3.81	4.61	5.61	6.87	-
40	1.26	1.73	2.20	2.71	3.27	3.94	4.75	5.74	-
45	-	1.35	1.81	2.29	2.80	3.37	4.04	4.85	-
50	-	-	1.42	1.88	2.35	2.87	3.44	4.12	-
55	-	-	-	1.47	1.93	2.40	2.91	3.50	-
60	-	-	-	-	1.51	1.96	2.43	2.94	-
65	-	-	-	-	-	1.54	1.98	2.44	-

Nominal performance at to = 7.2 °C, tc = 54.4 °C

Cooling capacity	24 333	W
Power input	7 546	W
Current consumption	10.96	A
Mass flow	551	kg/h
C.O.P.	3.22	

Pressure switch settings

Maximum HP switch setting	45	bar(g)
Minimum LP switch setting	1.5	bar(g)
LP pump down setting	2.3	bar(g)

Sound power data

Sound power level	74	dB(A)
With acoustic hood	69	dB(A)

to: Evaporating temperature at dew point

tc: Condensing temperature at dew point

Rating conditions : Superheat = 11.1 K , Subcooling = 8.3 K

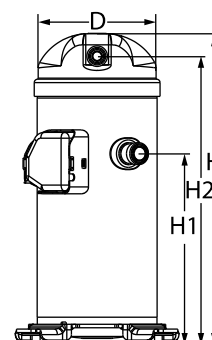
Tolerance according EN12900

Danfoss can accept no responsibility for possible errors in catalogues, brochures and other printed material. Danfoss reserves the right to alter its products without notice. This also applies to products already on order provided that such alternations can be made without subsequential changes being necessary in specifications already agreed. All trademarks in this material are property of the respective companies. Danfoss and the Danfoss logotype are trademarks of Danfoss A/S. All rights reserved.

General Characteristics

Model number (on compressor nameplate)		HLJ083T4LQ6
Code number for Singlepack*		121U3129
Code number for Industrial pack**		121U3128
Drawing number		0XR6089B-3
Suction and discharge connections		Rotolock
Suction connection		3/4 " Rotolock
Discharge connection		1/2 " Rotolock
Oil sight glass		None
Oil equalisation connection		None
Oil drain connection		None
LP gauge port		None
IPR valve		Yes
Swept volume		78.08 cm ³ /rev
Displacement @ Nominal speed		13.6 m ³ /h @ 2900 rpm - 16.4 m ³ /h @ 3500 rpm
Net weight		37.2 kg
Oil charge		1.57 litre, PVE --
Maximum system test pressure Low Side / High side		- bar(g) / - bar(g)
Maximum differential test pressure		- bar
Maximum number of starts per hour		-
Refrigerant charge limit		5.44 kg
Approved refrigerants		R410A

Dimensions

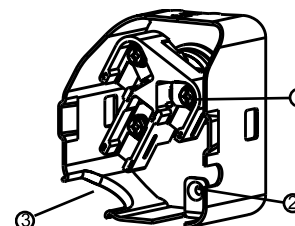


D=183.5 mm
H=455 mm
H1=280 mm
H2=422 mm
H3=- mm

Electrical Characteristics

Nominal voltage		380-415V/3/50Hz - 460V/3/60Hz
Voltage range		342-457 V @ 50Hz - 414-506 V @ 60Hz
Winding resistance between phases 1-2 +/- 7% at 25°C		1.617 Ω
Winding resistance between phases 1-3 +/- 7% at 25°C		1.595 Ω
Winding resistance between phases 2-3 +/- 7% at 25°C		1.630 Ω
Rated Load Amps (RLA)		13 A
Maximum Continuous Current (MCC)		19 A
Locked Rotor Amps (LRA)		100 A
Motor protection		Internal overload protector

Terminal box



IP22

- 1: Screw connectors 10-32 UNF x 9.5
- 2: Earth connection
- 3: Power cable passage

Recommended Installation torques

Oil sight glass		52.5 Nm
Power connections / Earth connection		3 Nm / 2 Nm

Parts shipped with compressor

Mounting kit with grommets and sleeves
Initial oil charge
Installation instructions

Approvals : CE certified, UL certified (file SA11565), -

*Singlepack: Compressor in cardboard box

**Industrial pack: 12 or 16 Unboxed compressors on pallet

Rotolock accessories, suction side **Code no.**

Rotolock accessories, discharge side **Code no.**

Rotolock accessories, sets **Code no.**

Oil / lubricants **Code no.**

PVE lubricant, 320HV (FVC68D), 1 litre can	120Z5034
--	----------

Crankcase heaters **Code no.**

Belt type crankcase heater, 65 W, 230 V, CE mark, UL	120Z0059
Belt type crankcase heater, 65 W, 400 V, CE mark, UL	120Z0060
Belt type crankcase heater, 70 W, 240 V, CE mark, UL	120Z5040
Belt type crankcase heater, 70 W, 240 V, CE mark, UL	120Z5040

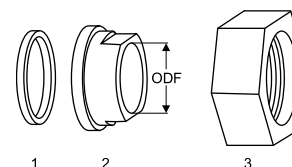
Miscellaneous accessories **Code no.**

Acoustic hood	120Z5044
Discharge thermostat kit	7750009
IP54 upgrade kit	118U0057

Spare parts **Code no.**

Mounting kit for 1 scroll compressor including 4 grommets, 4 sleeves, 4 bolts, 4 washers	120Z5005
Mounting kit, including 1 bolt, 1 sleeve, 1 washer	120Z5031
Terminal box cover	120Z5018

Gaskets, sleeves and nuts



- 1: Gasket
- 2: Solder sleeve
- 3: Rotolock nut

Performance data at 50 Hz, EN 12900 rating conditions
R410A

Cond. temp. in °C (tc)	Evaporating temperature in °C (to)							
	-25	-20	-15	-10	-5	0	5	10

Cooling capacity in W

30	7 228	9 109	11 215	13 662	16 563	20 035	24 194	29 155	-
35	6 444	8 427	10 537	12 887	15 592	18 766	22 524	26 982	-
40	5 366	7 524	9 712	12 042	14 627	17 581	21 018	25 051	-
45	-	6 330	8 666	11 049	13 588	16 397	19 588	23 274	-
50	-	-	7 328	9 830	12 395	15 131	18 150	21 564	-
55	-	-	-	8 315	10 968	13 698	16 613	19 823	-
60	-	-	-	-	9 230	12 008	14 877	17 944	-
65	-	-	-	-	-	9 959	12 815	15 777	-

Power input in W

30	3 884	3 940	3 973	3 981	3 962	3 911	3 827	3 706	-
35	4 234	4 304	4 354	4 380	4 380	4 351	4 291	4 195	-
40	4 624	4 704	4 765	4 805	4 820	4 808	4 766	4 691	-
45	-	5 149	5 217	5 265	5 291	5 291	5 262	5 203	-
50	-	-	5 718	5 770	5 802	5 809	5 790	5 741	-
55	-	-	-	6 330	6 363	6 373	6 358	6 316	-
60	-	-	-	-	6 984	6 992	6 977	6 936	-
65	-	-	-	-	-	7 675	7 656	7 612	-

Current consumption in A

30	8.94	8.89	8.84	8.80	8.78	8.76	8.76	8.77	-
35	9.24	9.24	9.24	9.23	9.22	9.21	9.19	9.18	-
40	9.63	9.69	9.72	9.74	9.75	9.74	9.71	9.68	-
45	-	10.24	10.32	10.36	10.38	10.37	10.34	10.28	-
50	-	-	11.04	11.11	11.14	11.13	11.08	11.00	-
55	-	-	-	12.00	12.04	12.03	11.97	11.86	-
60	-	-	-	-	13.11	13.10	13.03	12.89	-
65	-	-	-	-	-	14.36	14.26	14.10	-

Mass flow in kg/h

30	151	187	227	273	328	393	472	565	-
35	142	183	225	271	324	386	459	545	-
40	125	172	219	268	321	381	451	531	-
45	-	154	207	260	316	377	445	522	-
50	-	-	187	247	307	371	439	515	-
55	-	-	-	226	293	361	431	508	-
60	-	-	-	-	270	345	420	499	-
65	-	-	-	-	-	320	403	486	-

Coefficient of performance (C.O.P.)

30	1.86	2.31	2.82	3.43	4.18	5.12	6.32	7.87	-
35	1.52	1.96	2.42	2.94	3.56	4.31	5.25	6.43	-
40	1.16	1.60	2.04	2.51	3.03	3.66	4.41	5.34	-
45	-	1.23	1.66	2.10	2.57	3.10	3.72	4.47	-
50	-	-	1.28	1.70	2.14	2.60	3.13	3.76	-
55	-	-	-	1.31	1.72	2.15	2.61	3.14	-
60	-	-	-	-	1.32	1.72	2.13	2.59	-
65	-	-	-	-	-	1.30	1.67	2.07	-

Nominal performance at to = 5 °C, tc = 50 °C

Cooling capacity	18 150	W
Power input	5 790	W
Current consumption	11.08	A
Mass flow	439	kg/h
C.O.P.	3.13	

Pressure switch settings

Maximum HP switch setting	45	bar(g)
Minimum LP switch setting	1.5	bar(g)
LP pump down setting	2.3	bar(g)

Sound power data

Sound power level	71	dB(A)
With acoustic hood	66	dB(A)

to: Evaporating temperature at dew point

tc: Condensing temperature at dew point

Rating conditions : Superheat = 10 K , Subcooling = 0 K

Tolerance according EN12900

Danfoss can accept no responsibility for possible errors in catalogues, brochures and other printed material. Danfoss reserves the right to alter its products without notice. This also applies to products already on order provided that such alternations can be made without subsequential changes being necessary in specifications already agreed. All trademarks in this material are property of the respective companies. Danfoss and the Danfoss logotype are trademarks of Danfoss A/S. All rights reserved.

Performance data at 50 Hz, ARI rating conditions

R410A

Cond. temp. in °C (tc)	Evaporating temperature in °C (to)							
	-25	-20	-15	-10	-5	0	5	10

Cooling capacity in W

30	7 806	9 827	12 087	14 709	17 817	21 534	25 982	31 286	-
35	7 004	9 149	11 426	13 960	16 873	20 289	24 330	29 121	-
40	5 878	8 231	10 611	13 141	15 944	19 143	22 861	27 223	-
45	-	6 990	9 556	12 166	14 943	18 009	21 490	25 506	-
50	-	-	8 175	10 949	13 784	16 803	20 130	23 886	-
55	-	-	-	9 406	12 384	15 439	18 696	22 276	-
60	-	-	-	-	10 656	13 832	17 103	20 591	-
65	-	-	-	-	-	11 895	15 265	18 746	-

Power input in W

30	3 884	3 940	3 973	3 981	3 962	3 911	3 827	3 706	-
35	4 234	4 304	4 354	4 380	4 380	4 351	4 291	4 195	-
40	4 624	4 704	4 765	4 805	4 820	4 808	4 766	4 691	-
45	-	5 149	5 217	5 265	5 291	5 291	5 262	5 203	-
50	-	-	5 718	5 770	5 802	5 809	5 790	5 741	-
55	-	-	-	6 330	6 363	6 373	6 358	6 316	-
60	-	-	-	-	6 984	6 992	6 977	6 936	-
65	-	-	-	-	-	7 675	7 656	7 612	-

Current consumption in A

30	8.94	8.89	8.84	8.80	8.78	8.76	8.76	8.77	-
35	9.24	9.24	9.24	9.23	9.22	9.21	9.19	9.18	-
40	9.63	9.69	9.72	9.74	9.75	9.74	9.71	9.68	-
45	-	10.24	10.32	10.36	10.38	10.37	10.34	10.28	-
50	-	-	11.04	11.11	11.14	11.13	11.08	11.00	-
55	-	-	-	12.00	12.04	12.03	11.97	11.86	-
60	-	-	-	-	13.11	13.10	13.03	12.89	-
65	-	-	-	-	-	14.36	14.26	14.10	-

Mass flow in kg/h

30	150	186	226	272	326	391	468	561	-
35	141	182	224	270	322	383	456	541	-
40	124	171	218	266	319	379	447	527	-
45	-	153	206	259	314	374	442	518	-
50	-	-	186	246	306	368	436	511	-
55	-	-	-	225	291	358	429	504	-
60	-	-	-	-	268	342	417	496	-
65	-	-	-	-	-	318	400	483	-

Coefficient of performance (C.O.P.)

30	2.01	2.49	3.04	3.69	4.50	5.51	6.79	8.44	-
35	1.65	2.13	2.62	3.19	3.85	4.66	5.67	6.94	-
40	1.27	1.75	2.23	2.73	3.31	3.98	4.80	5.80	-
45	-	1.36	1.83	2.31	2.82	3.40	4.08	4.90	-
50	-	-	1.43	1.90	2.38	2.89	3.48	4.16	-
55	-	-	-	1.49	1.95	2.42	2.94	3.53	-
60	-	-	-	-	1.53	1.98	2.45	2.97	-
65	-	-	-	-	-	1.55	1.99	2.46	-

Nominal performance at to = 7.2 °C, tc = 54.4 °C

Cooling capacity	20 408	W
Power input	6 272	W
Current consumption	11.82	A
Mass flow	462	kg/h
C.O.P.	3.25	

Pressure switch settings

Maximum HP switch setting	45	bar(g)
Minimum LP switch setting	1.5	bar(g)
LP pump down setting	2.3	bar(g)

Sound power data

Sound power level	71	dB(A)
With acoustic hood	66	dB(A)

to: Evaporating temperature at dew point

tc: Condensing temperature at dew point

Rating conditions : Superheat = 11.1 K , Subcooling = 8.3 K

Tolerance according EN12900

Danfoss can accept no responsibility for possible errors in catalogues, brochures and other printed material. Danfoss reserves the right to alter its products without notice. This also applies to products already on order provided that such alternations can be made without subsequential changes being necessary in specifications already agreed. All trademarks in this material are property of the respective companies. Danfoss and the Danfoss logotype are trademarks of Danfoss A/S. All rights reserved.

Performance data at 60 Hz, EN 12900 rating conditions

R410A

Cond. temp. in °C (tc)	Evaporating temperature in °C (to)							
	-25	-20	-15	-10	-5	0	5	10

Cooling capacity in W

30	8 576	10 807	13 305	16 208	19 650	23 769	28 702	34 585	-
35	7 653	10 005	12 509	15 300	18 511	22 280	26 742	32 032	-
40	6 383	8 944	11 542	14 310	17 382	20 893	24 977	29 768	-
45	-	7 536	10 312	13 144	16 165	19 507	23 303	27 688	-
50	-	-	8 732	11 709	14 762	18 021	21 618	25 683	-
55	-	-	-	9 918	13 078	16 333	19 810	23 639	-
60	-	-	-	-	11 020	14 334	17 760	21 424	-
65	-	-	-	-	-	11 902	15 315	18 857	-

Power input in W

30	4 658	4 725	4 765	4 775	4 752	4 691	4 590	4 445	-
35	5 081	5 165	5 225	5 256	5 256	5 222	5 149	5 034	-
40	5 553	5 648	5 722	5 769	5 787	5 773	5 722	5 632	-
45	-	6 187	6 268	6 326	6 356	6 356	6 322	6 251	-
50	-	-	6 876	6 938	6 975	6 984	6 961	6 903	-
55	-	-	-	7 617	7 655	7 668	7 650	7 599	-
60	-	-	-	-	8 409	8 418	8 401	8 352	-
65	-	-	-	-	-	9 249	9 225	9 172	-

Current consumption in A

30	7.66	7.72	7.77	7.83	7.90	7.99	8.11	8.26	-
35	8.06	8.14	8.20	8.26	8.33	8.40	8.50	8.61	-
40	8.49	8.60	8.68	8.75	8.82	8.89	8.97	9.07	-
45	-	9.11	9.22	9.32	9.40	9.47	9.55	9.63	-
50	-	-	9.83	9.96	10.06	10.15	10.23	10.31	-
55	-	-	-	10.68	10.82	10.93	11.03	11.11	-
60	-	-	-	-	11.68	11.82	11.94	12.05	-
65	-	-	-	-	-	12.84	12.99	13.12	-

Mass flow in kg/h

30	179	222	270	324	389	467	559	671	-
35	169	217	267	322	385	458	545	647	-
40	149	205	260	318	382	453	535	631	-
45	-	183	246	310	376	448	529	621	-
50	-	-	223	294	366	441	523	613	-
55	-	-	-	270	349	430	515	606	-
60	-	-	-	-	323	411	501	596	-
65	-	-	-	-	-	383	481	581	-

Coefficient of performance (C.O.P.)

30	1.84	2.29	2.79	3.39	4.14	5.07	6.25	7.78	-
35	1.51	1.94	2.39	2.91	3.52	4.27	5.19	6.36	-
40	1.15	1.58	2.02	2.48	3.00	3.62	4.36	5.29	-
45	-	1.22	1.65	2.08	2.54	3.07	3.69	4.43	-
50	-	-	1.27	1.69	2.12	2.58	3.11	3.72	-
55	-	-	-	1.30	1.71	2.13	2.59	3.11	-
60	-	-	-	-	1.31	1.70	2.11	2.57	-
65	-	-	-	-	-	1.29	1.66	2.06	-

Nominal performance at to = 5 °C, tc = 50 °C

Cooling capacity	21 618	W
Power input	6 961	W
Current consumption	10.23	A
Mass flow	523	kg/h
C.O.P.	3.11	

Pressure switch settings

Maximum HP switch setting	45	bar(g)
Minimum LP switch setting	1.5	bar(g)
LP pump down setting	2.3	bar(g)

Sound power data

Sound power level	74	dB(A)
With acoustic hood	69	dB(A)

to: Evaporating temperature at dew point

tc: Condensing temperature at dew point

Rating conditions : Superheat = 10 K , Subcooling = 0 K

Tolerance according EN12900

Danfoss can accept no responsibility for possible errors in catalogues, brochures and other printed material. Danfoss reserves the right to alter its products without notice. This also applies to products already on order provided that such alternations can be made without subsequential changes being necessary in specifications already agreed. All trademarks in this material are property of the respective companies. Danfoss and the Danfoss logotype are trademarks of Danfoss A/S. All rights reserved.

Performance data at 60 Hz, ARI rating conditions

R410A

Cond. temp. in °C (tc)	Evaporating temperature in °C (to)							
	-25	-20	-15	-10	-5	0	5	10

Cooling capacity in W

30	9 262	11 658	14 339	17 451	21 138	25 547	30 823	37 113	-
35	8 318	10 862	13 565	16 574	20 033	24 088	28 886	34 571	-
40	6 993	9 784	12 610	15 616	18 947	22 749	27 168	32 349	-
45	-	8 322	11 370	14 473	17 776	21 425	25 565	30 343	-
50	-	-	9 741	13 042	16 417	20 013	23 975	28 449	-
55	-	-	-	11 219	14 767	18 410	22 294	26 564	-
60	-	-	-	-	12 721	16 512	20 417	24 584	-
65	-	-	-	-	-	14 215	18 243	22 406	-

Power input in W

30	4 658	4 725	4 765	4 775	4 752	4 691	4 590	4 445	-
35	5 081	5 165	5 225	5 256	5 256	5 222	5 149	5 034	-
40	5 553	5 648	5 722	5 769	5 787	5 773	5 722	5 632	-
45	-	6 187	6 268	6 326	6 356	6 356	6 322	6 251	-
50	-	-	6 876	6 938	6 975	6 984	6 961	6 903	-
55	-	-	-	7 617	7 655	7 668	7 650	7 599	-
60	-	-	-	-	8 409	8 418	8 401	8 352	-
65	-	-	-	-	-	9 249	9 225	9 172	-

Current consumption in A

30	7.66	7.72	7.77	7.83	7.90	7.99	8.11	8.26	-
35	8.06	8.14	8.20	8.26	8.33	8.40	8.50	8.61	-
40	8.49	8.60	8.68	8.75	8.82	8.89	8.97	9.07	-
45	-	9.11	9.22	9.32	9.40	9.47	9.55	9.63	-
50	-	-	9.83	9.96	10.06	10.15	10.23	10.31	-
55	-	-	-	10.68	10.82	10.93	11.03	11.11	-
60	-	-	-	-	11.68	11.82	11.94	12.05	-
65	-	-	-	-	-	12.84	12.99	13.12	-

Mass flow in kg/h

30	178	221	268	322	387	463	556	666	-
35	168	216	265	320	383	455	541	642	-
40	148	203	259	316	379	450	532	627	-
45	-	182	245	308	374	445	525	616	-
50	-	-	222	293	364	438	519	609	-
55	-	-	-	268	347	427	511	601	-
60	-	-	-	-	321	409	498	592	-
65	-	-	-	-	-	380	478	577	-

Coefficient of performance (C.O.P.)

30	1.99	2.47	3.01	3.65	4.45	5.45	6.72	8.35	-
35	1.64	2.10	2.60	3.15	3.81	4.61	5.61	6.87	-
40	1.26	1.73	2.20	2.71	3.27	3.94	4.75	5.74	-
45	-	1.35	1.81	2.29	2.80	3.37	4.04	4.85	-
50	-	-	1.42	1.88	2.35	2.87	3.44	4.12	-
55	-	-	-	1.47	1.93	2.40	2.91	3.50	-
60	-	-	-	-	1.51	1.96	2.43	2.94	-
65	-	-	-	-	-	1.54	1.98	2.44	-

Nominal performance at to = 7.2 °C, tc = 54.4 °C

Cooling capacity	24 333	W
Power input	7 546	W
Current consumption	10.96	A
Mass flow	551	kg/h
C.O.P.	3.22	

Pressure switch settings

Maximum HP switch setting	45	bar(g)
Minimum LP switch setting	1.5	bar(g)
LP pump down setting	2.3	bar(g)

Sound power data

Sound power level	74	dB(A)
With acoustic hood	69	dB(A)

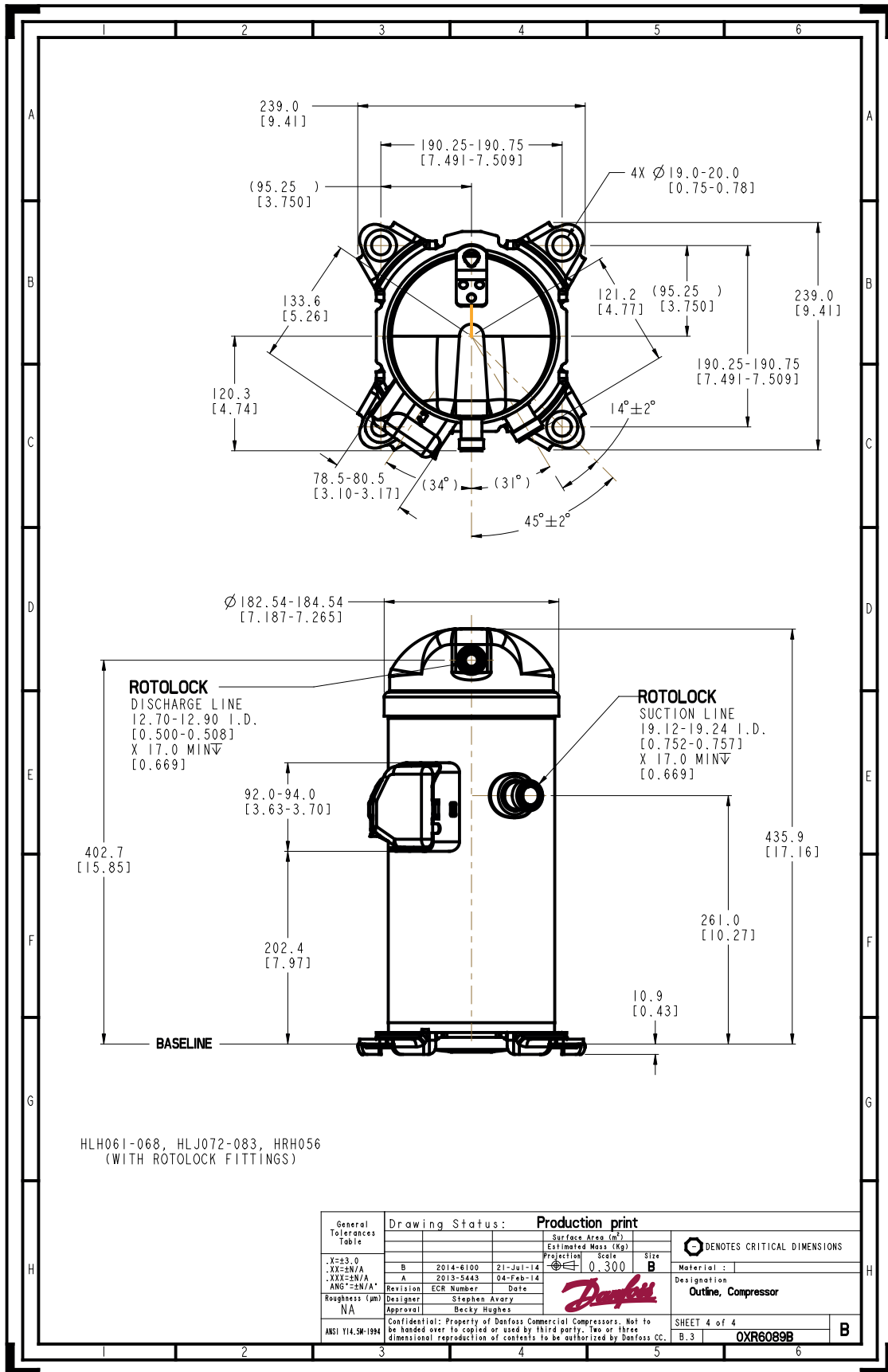
to: Evaporating temperature at dew point

tc: Condensing temperature at dew point

Rating conditions : Superheat = 11.1 K , Subcooling = 8.3 K

Tolerance according EN12900

Danfoss can accept no responsibility for possible errors in catalogues, brochures and other printed material. Danfoss reserves the right to alter its products without notice. This also applies to products already on order provided that such alternations can be made without subsequential changes being necessary in specifications already agreed. All trademarks in this material are property of the respective companies. Danfoss and the Danfoss logotype are trademarks of Danfoss A/S. All rights reserved.



Danfoss can accept no responsibility for possible errors in catalogues, brochures and other printed material. Danfoss reserves the right to alter its products without notice. This also applies to products already on order provided that such alternations can be made without consequential changes being necessary in specifications already agreed. All trademarks in this material are property of the respective companies. Danfoss, the Danfoss logotype and Maneurop are trademarks of Danfoss A/S. All rights reserved.