

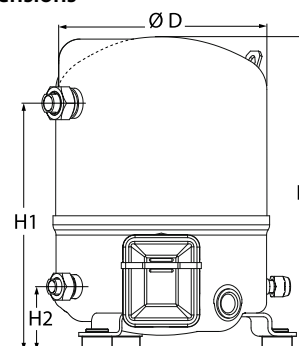
Datasheets

Danfoss Reciprocating compressors **MT / MTZ / NTZ**



General Characteristics

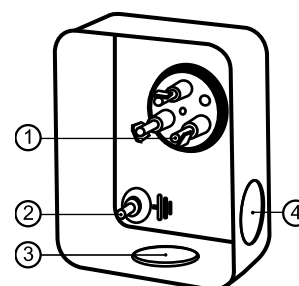
Model number (on compressor nameplate)		MTZ32JF5AVE
Code number for Singlepack*		MTZ32-5VI
Code number for Industrial pack**		MTZ32-5VM
Drawing number		8501020e
Suction and discharge connections		Rotolock
Suction connection		1-1/4" Rotolock
Discharge connection		1" Rotolock
Suction connection with supplied sleeve		5/8" ODF
Discharge connection with supplied sleeve		1/2" ODF
Oil sight glass		Threaded
Oil equalisation connection		3/8" flare SAE
Oil drain connection		None
LP gauge port		Schrader
IPR valve		None
Cylinders	1	
Swept volume	53.86 cm ³ /rev	
Displacement @ Nominal speed	9.4 m ³ /h @ 2900 rpm	
Net weight	24 kg	
Oil charge	0.95 litre, POE - 175PZ	
Maximum system test pressure Low Side / High side	25 bar(g) / 30 bar(g)	
Maximum differential test pressure	30 bar	
Maximum number of starts per hour	12	
Refrigerant charge limit	2.5 kg	
Approved refrigerants	R404A, R134a, R407A/C/F, R448A, R449A, R452A, R513A	

Dimensions


D=224 mm
 H=356 mm
 H1=263 mm
 H2=68 mm
 H3= mm

Electrical Characteristics

Nominal voltage	220-240V/1/50Hz
Voltage range	220-240 V
Winding resistance (main / start) at 25°C	0.8 Ω / 4.22 Ω
Run capacitors A + C	25 µF + 10 µF
Start capacitor B	135 µF
Start relay	RVA-6AMKL
Maximum Continuous Current (MCC)	20 A
Locked Rotor Amps (LRA)	70 A
Motor protection	Internal overload protector

Terminal box

Recommended Installation torques

Oil sight glass	50 Nm
Power connections / Earth connection	2 Nm / 2 Nm
Mounting bolts	15 Nm

Parts shipped with compressor

Mounting kit with grommets, bolts, nuts, sleeves and washers
Suction & Discharge solder sleeves, rotolock nuts and gaskets (shipped with rotolock version only)
Initial oil charge
Installation instructions

Approvals : CE certified, -, CCC certified

*Singlepack: Compressor in cardboard box

**Industrial pack: 12 Unboxed compressors on pallet (order per multiples of 12)

IP55 (with cable gland)

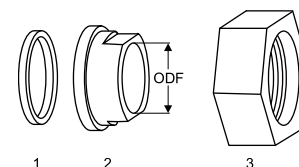
- 1: Spade connectors 1/4"
- 2: Earth M4-12
- 3: Knock-out Ø 21 mm (0.83")
- 4: Hole Ø 21 mm (0.83")

Rotolock accessories, suction side
Code no.

Solder sleeve, P09 (1-1/4" Rotolock, 5/8" ODF)	8153011
Rotolock valve, V09 (1-1/4" Rotolock, 5/8" ODF)	8168033
Gasket, 1-1/4"	8156131

Gaskets, sleeves and nuts
Rotolock accessories, discharge side
Code no.

Solder sleeve, P06 (1" Rotolock, 1/2" ODF)	8153007
Rotolock valve, V06 (1" Rotolock, 1/2" ODF)	8168031
Gasket, 1"	8156130



- 1: Gasket
2: Solder sleeve
3: Rotolock nut

Rotolock accessories, sets
Code no.

Valve set, V09 (1-1/4"~5/8"), V06 (1"~1/2")	7703005
Gasket set, 1", 1-1/4", 1-3/4", OSG gaskets black & white	8156009

Oil / lubricants
Code no.

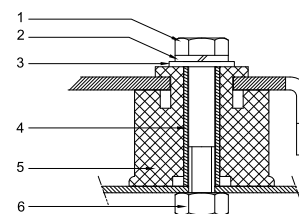
POE lubricant, 175PZ, 1 litre can	120Z0638
POE lubricant, 175PZ, 2.5 litre can	120Z0639

Crankcase heaters
Code no.

PTC heater 27W, CE mark, UL	120Z0459
Belt type crankcase heater, 54 W, 230 V, CE mark, UL	7773106

Miscellaneous accessories
Code no.

PSC starting kit, 25 µF, 10 µF	7701024
CSR starting kit, 25 µF, 10 µF, 140 µF	7701023
CSR starting kit, prewired box, 25 µF, 10 µF, 140 µF	7701029
Acoustic hood for 1 cylinder compressor	120Z0575
Oil equalisation nut	8153127

Mounting kit


- 1: Bolt (3x)
2: Lock washer (3x)
3: Flat washer (3x)
4: Sleeve (3x)
5: Grommet (3x)
6: Nut (3x)

Spare parts
Code no.

Mounting kit for 1 and 2 cylinder compressor, including 3 grommets, 3 bolts	8156001
Oil sight glass with gaskets (black & white)	8156019
Gasket for oil sight glass (black chloroprene)	8156145
Service kit for terminal box 80 x 96 mm, including 1 cover, 1 clamp	8156134

Datasheet, performance data

Maneurop reciprocating compressor. MTZ032-5

Performance data at 50 Hz, EN 12900 rating conditions

R407C

Cond. temp. in °C (tc)	Evaporating temperature in °C (to)							
	-15	-10	-5	0	5	10	15	

Cooling capacity in W

35	3 058	4 162	5 461	6 979	8 741	10 770	13 090	-	-
40	2 719	3 767	4 992	6 419	8 071	9 973	12 147	-	-
45	2 376	3 369	4 521	5 857	7 401	9 176	11 206	-	-
50	-	2 967	4 048	5 295	6 731	8 380	10 267	-	-
55	-	-	3 574	4 732	6 062	7 587	9 332	-	-
60	-	-	-	4 170	5 394	6 797	8 401	-	-
65	-	-	-	3 609	4 730	6 010	7 474	-	-

Power input in W

35	1 495	1 668	1 816	1 938	2 029	2 087	2 109	-	-
40	1 525	1 726	1 904	2 058	2 182	2 276	2 335	-	-
45	1 539	1 771	1 982	2 170	2 331	2 462	2 561	-	-
50	-	1 806	2 053	2 277	2 477	2 649	2 791	-	-
55	-	-	2 120	2 384	2 625	2 841	3 027	-	-
60	-	-	-	2 493	2 778	3 040	3 274	-	-
65	-	-	-	2 608	2 940	3 250	3 534	-	-

Current consumption in A

35	8.25	8.80	9.29	9.73	10.11	10.43	10.69	-	-
40	8.32	9.01	9.62	10.17	10.63	11.02	11.32	-	-
45	8.28	9.14	9.92	10.60	11.19	11.68	12.07	-	-
50	-	9.21	10.18	11.04	11.79	12.42	12.94	-	-
55	-	-	10.44	11.51	12.46	13.27	13.95	-	-
60	-	-	-	12.02	13.20	14.23	15.11	-	-
65	-	-	-	12.57	14.03	15.32	16.43	-	-

Mass flow in kg/h

35	66	89	115	144	178	216	259	-	-
40	62	84	110	139	172	210	252	-	-
45	57	80	105	134	166	203	244	-	-
50	-	74	100	128	160	196	236	-	-
55	-	-	94	122	153	188	227	-	-
60	-	-	-	115	146	180	218	-	-
65	-	-	-	107	138	171	209	-	-

Coefficient of performance (C.O.P.)

35	2.04	2.49	3.01	3.60	4.31	5.16	6.21	-	-
40	1.78	2.18	2.62	3.12	3.70	4.38	5.20	-	-
45	1.54	1.90	2.28	2.70	3.18	3.73	4.38	-	-
50	-	1.64	1.97	2.33	2.72	3.16	3.68	-	-
55	-	-	1.69	1.98	2.31	2.67	3.08	-	-
60	-	-	-	1.67	1.94	2.24	2.57	-	-
65	-	-	-	1.38	1.61	1.85	2.11	-	-

Nominal performance at to = 5 °C, tc = 50 °C

Cooling capacity	6 731	W
Power input	2 477	W
Current consumption	11.79	A
Mass flow	160	kg/h
C.O.P.	2.72	



to: Evaporating temperature at dew point

tc: Condensing temperature at dew point

Rating conditions : Superheat = 10 K , Subcooling = 0 K

Pressure switch settings

Maximum HP switch setting	29.4	bar(g)
Minimum LP switch setting	1.4	bar(g)
LP pump down setting	1.7	bar(g)

Sound power data

Sound power level	74	dB(A)
With acoustic hood	67	dB(A)

Tolerance according EN12900

Performance data at 50 Hz, ARI rating conditions
R407C

Cond. temp. in °C (tc)	Evaporating temperature in °C (to)							
	-15	-10	-5	0	5	10	15	

Cooling capacity in W

35	3 291	4 474	5 864	7 486	9 365	11 527	13 996	-	-
40	2 943	4 071	5 388	6 920	8 690	10 725	13 049	-	-
45	2 588	3 663	4 909	6 351	8 014	9 923	12 104	-	-
50	-	3 250	4 427	5 781	7 338	9 123	11 162	-	-
55	-	-	3 942	5 209	6 662	8 324	10 223	-	-
60	-	-	-	4 638	5 988	7 530	9 290	-	-
65	-	-	-	4 067	5 317	6 741	8 365	-	-

Power input in W

35	1 495	1 668	1 816	1 938	2 029	2 087	2 109	-	-
40	1 525	1 726	1 904	2 058	2 182	2 276	2 335	-	-
45	1 539	1 771	1 982	2 170	2 331	2 462	2 561	-	-
50	-	1 806	2 053	2 277	2 477	2 649	2 791	-	-
55	-	-	2 120	2 384	2 625	2 841	3 027	-	-
60	-	-	-	2 493	2 778	3 040	3 274	-	-
65	-	-	-	2 608	2 940	3 250	3 534	-	-

Current consumption in A

35	8.25	8.80	9.29	9.73	10.11	10.43	10.69	-	-
40	8.32	9.01	9.62	10.17	10.63	11.02	11.32	-	-
45	8.28	9.14	9.92	10.60	11.19	11.68	12.07	-	-
50	-	9.21	10.18	11.04	11.79	12.42	12.94	-	-
55	-	-	10.44	11.51	12.46	13.27	13.95	-	-
60	-	-	-	12.02	13.20	14.23	15.11	-	-
65	-	-	-	12.57	14.03	15.32	16.43	-	-

Mass flow in kg/h

35	66	88	114	143	177	215	258	-	-
40	62	84	109	138	171	208	250	-	-
45	57	79	104	133	165	202	243	-	-
50	-	74	99	127	159	194	234	-	-
55	-	-	93	121	152	187	226	-	-
60	-	-	-	114	145	179	217	-	-
65	-	-	-	107	137	170	208	-	-

Coefficient of performance (C.O.P.)

35	2.20	2.68	3.23	3.86	4.62	5.52	6.64	-	-
40	1.93	2.36	2.83	3.36	3.98	4.71	5.59	-	-
45	1.68	2.07	2.48	2.93	3.44	4.03	4.73	-	-
50	-	1.80	2.16	2.54	2.96	3.44	4.00	-	-
55	-	-	1.86	2.19	2.54	2.93	3.38	-	-
60	-	-	-	1.86	2.16	2.48	2.84	-	-
65	-	-	-	1.56	1.81	2.07	2.37	-	-

Nominal performance at to = 7.2 °C, tc = 54.4 °C

Cooling capacity	7 453	W
Power input	2 703	W
Current consumption	12.74	A
Mass flow	168	kg/h
C.O.P.	2.76	

to: Evaporating temperature at dew point

tc: Condensing temperature at dew point

Rating conditions : Superheat = 11.1 K , Subcooling = 8.3 K

Pressure switch settings

Maximum HP switch setting	29.4	bar(g)
Minimum LP switch setting	1.4	bar(g)
LP pump down setting	1.7	bar(g)

Sound power data

Sound power level	74	dB(A)
With acoustic hood	67	dB(A)

Tolerance according EN12900

Datasheet, performance data

Maneurop reciprocating compressor. MTZ032-5

Performance data at 50 Hz, EN 12900 rating conditions

R134a

Cond. temp. in °C (tc)	Evaporating temperature in °C (to)								
	-25	-20	-10	-5	0	5	10	15	20

Cooling capacity in W

35	941	1 350	2 530	3 357	4 379	5 623	7 118	8 891	10 969
40	806	1 196	2 306	3 082	4 041	5 212	6 622	8 299	10 271
45	669	1 039	2 076	2 799	3 694	4 790	6 115	7 695	9 560
50	534	882	1 843	2 511	3 341	4 361	5 599	7 081	8 836
55	-	-	1 611	2 223	2 986	3 929	5 077	6 460	8 105
60	-	-	-	1 937	2 632	3 495	4 554	5 836	7 369
65	-	-	-	-	2 282	3 064	4 032	5 211	6 631
75	-	-	-	-	-	-	3 004	3 975	5 163

Power input in W

35	773	925	1 220	1 351	1 465	1 554	1 613	1 637	1 619
40	793	950	1 262	1 407	1 535	1 642	1 721	1 767	1 774
45	801	964	1 298	1 456	1 601	1 727	1 828	1 898	1 932
50	795	967	1 325	1 499	1 663	1 809	1 933	2 029	2 091
55	-	-	1 344	1 535	1 718	1 887	2 036	2 160	2 251
60	-	-	-	1 564	1 768	1 961	2 137	2 289	2 412
65	-	-	-	-	1 812	2 031	2 234	2 417	2 572
75	-	-	-	-	-	-	2 417	2 665	2 892

Current consumption in A

35	7.58	7.89	8.50	8.77	9.00	9.18	9.30	9.35	9.30
40	7.62	7.95	8.62	8.93	9.20	9.44	9.62	9.73	9.77
45	7.63	7.99	8.71	9.07	9.40	9.69	9.94	10.13	10.24
50	7.61	7.98	8.79	9.19	9.57	9.93	10.25	10.52	10.72
55	-	-	8.83	9.28	9.73	10.16	10.55	10.90	11.20
60	-	-	-	9.35	9.86	10.36	10.83	11.27	11.67
65	-	-	-	-	9.95	10.53	11.09	11.63	12.12
75	-	-	-	-	-	-	11.52	12.25	12.96

Mass flow in kg/h

35	24	34	60	78	99	125	156	191	233
40	22	31	58	75	96	122	152	187	228
45	19	29	55	72	93	118	147	182	222
50	16	26	52	68	89	113	142	176	216
55	-	-	48	64	84	108	137	170	209
60	-	-	-	60	80	103	131	163	202
65	-	-	-	-	74	97	124	156	194
75	-	-	-	-	-	-	109	139	175

Coefficient of performance (C.O.P.)

35	1.22	1.46	2.07	2.48	2.99	3.62	4.41	5.43	6.78
40	1.02	1.26	1.83	2.19	2.63	3.17	3.85	4.70	5.79
45	0.84	1.08	1.60	1.92	2.31	2.77	3.34	4.05	4.95
50	0.67	0.91	1.39	1.68	2.01	2.41	2.90	3.49	4.23
55	-	-	1.20	1.45	1.74	2.08	2.49	2.99	3.60
60	-	-	-	1.24	1.49	1.78	2.13	2.55	3.06
65	-	-	-	-	1.26	1.51	1.80	2.16	2.58
75	-	-	-	-	-	-	1.24	1.49	1.79

Nominal performance at to = 5 °C, tc = 50 °C

Cooling capacity	4 361	W
Power input	1 809	W
Current consumption	9.93	A
Mass flow	113	kg/h
C.O.P.	2.41	

Pressure switch settings

Maximum HP switch setting	20.2	bar(g)
Minimum LP switch setting	0.1	bar(g)
LP pump down setting	0.4	bar(g)

Sound power data

Sound power level	0	dB(A)
With accoustic hood	0	dB(A)

to: Evaporating temperature at dew point

tc: Condensing temperature at dew point

Rating conditions : Superheat = 10 K , Subcooling = 0 K

Tolerance according EN12900

Danfoss can accept no responsibility for possible errors in catalogues, brochures and other printed material. Danfoss reserves the right to alter its products without notice. This also applies to products already on order provided that such alternations can be made without subsequential changes being necessary in specifications already agreed. All trademarks in this material are property of the respective companies. Danfoss, the Danfoss logotype and Maneurop are trademarks of Danfoss A/S. All rights reserved.

Datasheet, performance data

Maneurop reciprocating compressor. MTZ032-5

Performance data at 50 Hz, ARI rating conditions

R134a

Cond. temp. in °C (tc)	Evaporating temperature in °C (to)								
	-25	-20	-10	-5	0	5	10	15	20

Cooling capacity in W

35	1 023	1 465	2 736	3 624	4 720	6 052	7 650	9 541	11 756
40	882	1 305	2 507	3 344	4 377	5 636	7 149	8 947	11 056
45	737	1 141	2 270	3 054	4 023	5 207	6 636	8 337	10 340
50	-	976	2 029	2 759	3 662	4 770	6 112	7 715	9 611
55	-	-	1 788	2 461	3 298	4 328	5 581	7 086	8 872
60	-	-	-	2 164	2 932	3 883	5 046	6 451	8 127
65	-	-	-	-	-	3 440	4 512	5 816	7 380
75	-	-	-	-	-	-	3 457	4 555	5 896

Power input in W

35	773	925	1 220	1 351	1 465	1 554	1 613	1 637	1 619
40	793	950	1 262	1 407	1 535	1 642	1 721	1 767	1 774
45	801	964	1 298	1 456	1 601	1 727	1 828	1 898	1 932
50	-	967	1 325	1 499	1 663	1 809	1 933	2 029	2 091
55	-	-	1 344	1 535	1 718	1 887	2 036	2 160	2 251
60	-	-	-	1 564	1 768	1 961	2 137	2 289	2 412
65	-	-	-	-	-	2 031	2 234	2 417	2 572
75	-	-	-	-	-	-	2 417	2 665	2 892

Current consumption in A

35	7.58	7.89	8.50	8.77	9.00	9.18	9.30	9.35	9.30
40	7.62	7.95	8.62	8.93	9.20	9.44	9.62	9.73	9.77
45	7.63	7.99	8.71	9.07	9.40	9.69	9.94	10.13	10.24
50	-	7.98	8.79	9.19	9.57	9.93	10.25	10.52	10.72
55	-	-	8.83	9.28	9.73	10.16	10.55	10.90	11.20
60	-	-	-	9.35	9.86	10.36	10.83	11.27	11.67
65	-	-	-	-	-	10.53	11.09	11.63	12.12
75	-	-	-	-	-	-	11.52	12.25	12.96

Mass flow in kg/h

35	24	34	60	78	99	125	155	190	232
40	22	31	57	75	96	121	151	186	227
45	19	29	55	72	92	117	147	181	221
50	-	26	51	68	88	113	142	176	215
55	-	-	48	64	84	108	136	169	208
60	-	-	-	60	79	102	130	163	201
65	-	-	-	-	-	96	123	155	192
75	-	-	-	-	-	-	108	139	174

Coefficient of performance (C.O.P.)

35	1.32	1.58	2.24	2.68	3.22	3.90	4.74	5.83	7.26
40	1.11	1.37	1.99	2.38	2.85	3.43	4.15	5.06	6.23
45	0.92	1.18	1.75	2.10	2.51	3.02	3.63	4.39	5.35
50	-	1.01	1.53	1.84	2.20	2.64	3.16	3.80	4.60
55	-	-	1.33	1.60	1.92	2.29	2.74	3.28	3.94
60	-	-	-	1.38	1.66	1.98	2.36	2.82	3.37
65	-	-	-	-	-	1.69	2.02	2.41	2.87
75	-	-	-	-	-	-	1.43	1.71	2.04

Nominal performance at to = 7.2 °C, tc = 54.4 °C

Cooling capacity	4 908	W
Power input	1 945	W
Current consumption	10.30	A
Mass flow	120	kg/h
C.O.P.	2.52	

Pressure switch settings

Maximum HP switch setting	20.2	bar(g)
Minimum LP switch setting	0.1	bar(g)
LP pump down setting	0.4	bar(g)

Sound power data

Sound power level	0	dB(A)
With accoustic hood	0	dB(A)

to: Evaporating temperature at dew point

tc: Condensing temperature at dew point

Rating conditions : Superheat = 11.1 K , Subcooling = 8.3 K

Tolerance according EN12900

Danfoss can accept no responsibility for possible errors in catalogues, brochures and other printed material. Danfoss reserves the right to alter its products without notice. This also applies to products already on order provided that such alternations can be made without subsequential changes being necessary in specifications already agreed. All trademarks in this material are property of the respective companies. Danfoss, the Danfoss logotype and Maneurop are trademarks of Danfoss A/S. All rights reserved.

Datasheet, performance data

Maneurop reciprocating compressor. MTZ032-5

Performance data at 50 Hz, EN 12900 rating conditions

R404A

Cond. temp. in °C (tc)	Evaporating temperature in °C (to)								
	-30	-25	-20	-15	-10	-5	0	5	10

Cooling capacity in W

30	1 757	2 453	3 305	4 335	5 561	7 003	8 682	10 616	12 826
35	1 510	2 155	2 945	3 899	5 036	6 376	7 940	9 747	11 816
40	1 271	1 864	2 589	3 464	4 509	5 745	7 191	8 867	10 793
45	1 044	1 582	2 238	3 031	3 983	5 111	6 437	7 980	9 759
50	828	1 308	1 893	2 603	3 457	4 476	5 679	7 085	8 715
55	-	1 046	1 557	2 180	2 935	3 841	4 917	6 185	7 663
60	-	796	1 231	1 764	2 417	3 207	4 155	5 281	6 605

Power input in W

30	1 246	1 436	1 610	1 767	1 904	2 021	2 115	2 187	2 234
35	1 243	1 456	1 653	1 834	1 997	2 141	2 265	2 367	2 445
40	1 227	1 463	1 685	1 892	2 083	2 256	2 409	2 542	2 654
45	1 198	1 458	1 706	1 941	2 160	2 363	2 548	2 714	2 860
50	1 154	1 441	1 716	1 980	2 229	2 464	2 682	2 882	3 063
55	-	1 410	1 715	2 008	2 289	2 557	2 809	3 045	3 263
60	-	1 367	1 701	2 026	2 340	2 642	2 930	3 203	3 460

Current consumption in A

30	8.57	9.14	9.75	10.36	10.92	11.39	11.74	11.92	11.89
35	8.60	9.22	9.88	10.56	11.19	11.76	12.21	12.50	12.59
40	8.61	9.29	10.03	10.79	11.52	12.20	12.76	13.19	13.42
45	8.55	9.31	10.15	11.01	11.87	12.67	13.38	13.95	14.35
50	8.39	9.25	10.21	11.20	12.19	13.14	14.02	14.76	15.35
55	-	9.07	10.16	11.30	12.46	13.58	14.64	15.58	16.37
60	-	8.74	9.98	11.29	12.63	13.95	15.20	16.36	17.38

Mass flow in kg/h

30	55	76	99	127	159	195	237	284	337
35	51	71	95	122	153	189	230	277	329
40	47	66	90	116	147	183	224	269	321
45	42	62	84	111	141	176	216	261	312
50	37	56	79	104	134	169	208	253	303
55	-	51	73	98	127	161	199	243	292
60	-	45	66	91	119	152	190	233	281

Coefficient of performance (C.O.P.)

30	1.41	1.71	2.05	2.45	2.92	3.47	4.10	4.85	5.74
35	1.21	1.48	1.78	2.13	2.52	2.98	3.51	4.12	4.83
40	1.04	1.27	1.54	1.83	2.16	2.55	2.98	3.49	4.07
45	0.87	1.08	1.31	1.56	1.84	2.16	2.53	2.94	3.41
50	0.72	0.91	1.10	1.31	1.55	1.82	2.12	2.46	2.85
55	-	0.74	0.91	1.09	1.28	1.50	1.75	2.03	2.35
60	-	0.58	0.72	0.87	1.03	1.21	1.42	1.65	1.91

Nominal performance at to = -10 °C, tc = 45 °C

Cooling capacity	3 983	W
Power input	2 160	W
Current consumption	11.87	A
Mass flow	141	kg/h
C.O.P.	1.84	

Pressure switch settings

Maximum HP switch setting	27.7	bar(g)
Minimum LP switch setting	1	bar(g)
LP pump down setting	1.3	bar(g)

Sound power data

Sound power level	71	dB(A)
With acoustic hood	64	dB(A)

to: Evaporating temperature at dew point

tc: Condensing temperature at dew point

Rating conditions : Superheat = 10 K , Subcooling = 0 K

Tolerance according EN12900

Datasheet, performance data

Maneurop reciprocating compressor. MTZ032-5

Performance data at 50 Hz, ARI rating conditions

R404A

Cond. temp. in °C (tc)	Evaporating temperature in °C (to)								
	-30	-25	-20	-15	-10	-5	0	5	10

Cooling capacity in W

30	1 956	2 723	3 660	4 788	6 128	7 701	9 527	11 627	14 021
35	1 699	2 417	3 293	4 347	5 600	7 073	8 787	10 762	13 019
40	1 449	2 117	2 930	3 907	5 070	6 441	8 040	9 888	12 006
45	1 210	1 825	2 570	3 468	4 540	5 806	7 288	9 007	10 984
50	981	1 541	2 218	3 034	4 011	5 171	6 535	8 123	9 957
55	-	1 267	1 874	2 607	3 488	4 540	5 784	7 242	8 935
60	-	1 006	1 541	2 190	2 976	3 921	5 047	6 375	7 929

Power input in W

30	1 246	1 436	1 610	1 767	1 904	2 021	2 115	2 187	2 234
35	1 243	1 456	1 653	1 834	1 997	2 141	2 265	2 367	2 445
40	1 227	1 463	1 685	1 892	2 083	2 256	2 409	2 542	2 654
45	1 198	1 458	1 706	1 941	2 160	2 363	2 548	2 714	2 860
50	1 154	1 441	1 716	1 980	2 229	2 464	2 682	2 882	3 063
55	-	1 410	1 715	2 008	2 289	2 557	2 809	3 045	3 263
60	-	1 367	1 701	2 026	2 340	2 642	2 930	3 203	3 460

Current consumption in A

30	8.57	9.14	9.75	10.36	10.92	11.39	11.74	11.92	11.89
35	8.60	9.22	9.88	10.56	11.19	11.76	12.21	12.50	12.59
40	8.61	9.29	10.03	10.79	11.52	12.20	12.76	13.19	13.42
45	8.55	9.31	10.15	11.01	11.87	12.67	13.38	13.95	14.35
50	8.39	9.25	10.21	11.20	12.19	13.14	14.02	14.76	15.35
55	-	9.07	10.16	11.30	12.46	13.58	14.64	15.58	16.37
60	-	8.74	9.98	11.29	12.63	13.95	15.20	16.36	17.38

Mass flow in kg/h

30	55	75	99	126	158	194	235	282	335
35	51	71	94	121	152	188	229	275	327
40	46	66	89	116	147	182	222	268	319
45	42	61	84	110	140	175	215	260	310
50	37	56	78	104	134	168	207	251	301
55	-	50	72	97	126	160	198	242	290
60	-	45	66	90	119	152	189	231	280

Coefficient of performance (C.O.P.)

30	1.57	1.90	2.27	2.71	3.22	3.81	4.50	5.32	6.28
35	1.37	1.66	1.99	2.37	2.80	3.30	3.88	4.55	5.33
40	1.18	1.45	1.74	2.06	2.43	2.86	3.34	3.89	4.52
45	1.01	1.25	1.51	1.79	2.10	2.46	2.86	3.32	3.84
50	0.85	1.07	1.29	1.53	1.80	2.10	2.44	2.82	3.25
55	-	0.90	1.09	1.30	1.52	1.78	2.06	2.38	2.74
60	-	0.74	0.91	1.08	1.27	1.48	1.72	1.99	2.29

Nominal performance at to = -10 °C, tc = 45 °C

Cooling capacity	4 540	W
Power input	2 160	W
Current consumption	11.87	A
Mass flow	140	kg/h
C.O.P.	2.10	

to: Evaporating temperature at dew point

tc: Condensing temperature at dew point

Rating conditions : Superheat = 11.1 K , Subcooling = 8.3 K

Pressure switch settings

Maximum HP switch setting	27.7	bar(g)
Minimum LP switch setting	1	bar(g)
LP pump down setting	1.3	bar(g)

Sound power data

Sound power level	71	dB(A)
With acoustic hood	64	dB(A)

Tolerance according EN12900

Performance data at 50 Hz, EN 12900 rating conditions
R407A

Cond. temp. in °C (tc)	Evaporating temperature in °C (to)								
	-30	-25	-20	-15	-10	-5	0	5	10

Cooling capacity in W

30	1 276	1 918	2 708	3 668	4 817	6 175	7 762	9 598	11 704
35	1 087	1 697	2 446	3 353	4 438	5 722	7 225	8 966	10 966
40	895	1 470	2 173	3 024	4 043	5 249	6 664	8 307	10 198
45	703	1 240	1 894	2 686	3 635	4 761	6 085	7 626	9 404
50	-	1 012	1 615	2 344	3 219	4 262	5 492	6 928	8 591
55	-	-	1 339	2 002	2 802	3 757	4 889	6 217	7 762
60	-	-	-	1 666	2 386	3 251	4 282	5 499	6 922

Power input in W

30	980	1 184	1 372	1 542	1 694	1 827	1 939	2 028	2 095
35	962	1 189	1 401	1 597	1 776	1 937	2 078	2 198	2 297
40	929	1 180	1 418	1 642	1 849	2 040	2 212	2 364	2 496
45	880	1 158	1 423	1 676	1 913	2 135	2 340	2 527	2 694
50	-	1 122	1 417	1 699	1 969	2 224	2 463	2 685	2 889
55	-	-	1 398	1 713	2 016	2 305	2 580	2 840	3 082
60	-	-	-	1 716	2 054	2 380	2 692	2 991	3 274

Current consumption in A

30	7.17	7.69	8.25	8.82	9.35	9.81	10.15	10.35	10.34
35	7.19	7.72	8.32	8.93	9.53	10.06	10.50	10.81	10.94
40	7.19	7.76	8.40	9.07	9.75	10.39	10.94	11.38	11.67
45	7.14	7.75	8.46	9.22	9.99	10.75	11.44	12.03	12.48
50	-	7.67	8.46	9.32	10.21	11.10	11.94	12.70	13.34
55	-	-	8.36	9.34	10.37	11.41	12.43	13.38	14.22
60	-	-	-	9.25	10.43	11.65	12.85	14.01	15.08

Mass flow in kg/h

30	30	45	62	83	106	134	166	202	243
35	27	42	59	79	103	130	162	198	239
40	24	38	55	76	99	126	157	193	234
45	20	34	51	71	94	121	152	187	227
50	-	30	47	66	89	116	146	181	220
55	-	-	42	61	83	109	139	173	212
60	-	-	-	55	77	102	132	165	203

Coefficient of performance (C.O.P.)

30	1.30	1.62	1.97	2.38	2.84	3.38	4.00	4.73	5.59
35	1.13	1.43	1.75	2.10	2.50	2.95	3.48	4.08	4.77
40	0.96	1.25	1.53	1.84	2.19	2.57	3.01	3.51	4.08
45	0.80	1.07	1.33	1.60	1.90	2.23	2.60	3.02	3.49
50	-	0.90	1.14	1.38	1.64	1.92	2.23	2.58	2.97
55	-	-	0.96	1.17	1.39	1.63	1.89	2.19	2.52
60	-	-	-	0.97	1.16	1.37	1.59	1.84	2.11

Nominal performance at to = -10 °C, tc = 45 °C

Cooling capacity	3 635	W
Power input	1 913	W
Current consumption	9.99	A
Mass flow	94	kg/h
C.O.P.	1.90	

Pressure switch settings

Maximum HP switch setting	25.8	bar(g)
Minimum LP switch setting	0.9	bar(g)
LP pump down setting	1.2	bar(g)

Sound power data

Sound power level	70	dB(A)
With acoustic hood	63	dB(A)

to: Evaporating temperature at dew point

tc: Condensing temperature at dew point

Rating conditions : Superheat = 10 K , Subcooling = 0 K

Tolerance according EN12900

Datasheet, performance data

Maneurop reciprocating compressor. MTZ032-5

Performance data at 50 Hz, ARI rating conditions

R407A

Cond. temp. in °C (tc)	Evaporating temperature in °C (to)								
	-30	-25	-20	-15	-10	-5	0	5	10

Cooling capacity in W

30	1 380	2 071	2 921	3 951	5 181	6 634	8 329	10 287	12 530
35	1 183	1 843	2 652	3 630	4 799	6 179	7 791	9 656	11 796
40	980	1 607	2 372	3 295	4 398	5 702	7 228	8 997	11 030
45	776	1 367	2 083	2 948	3 982	5 207	6 644	8 314	10 237
50	-	1 127	1 793	2 596	3 558	4 701	6 045	7 613	9 424
55	-	-	1 504	2 243	3 130	4 188	5 437	6 899	8 596
60	-	-	-	1 893	2 703	3 673	4 825	6 180	7 760

Power input in W

30	980	1 184	1 372	1 542	1 694	1 827	1 939	2 028	2 095
35	962	1 189	1 401	1 597	1 776	1 937	2 078	2 198	2 297
40	929	1 180	1 418	1 642	1 849	2 040	2 212	2 364	2 496
45	880	1 158	1 423	1 676	1 913	2 135	2 340	2 527	2 694
50	-	1 122	1 417	1 699	1 969	2 224	2 463	2 685	2 889
55	-	-	1 398	1 713	2 016	2 305	2 580	2 840	3 082
60	-	-	-	1 716	2 054	2 380	2 692	2 991	3 274

Current consumption in A

30	7.17	7.69	8.25	8.82	9.35	9.81	10.15	10.35	10.34
35	7.19	7.72	8.32	8.93	9.53	10.06	10.50	10.81	10.94
40	7.19	7.76	8.40	9.07	9.75	10.39	10.94	11.38	11.67
45	7.14	7.75	8.46	9.22	9.99	10.75	11.44	12.03	12.48
50	-	7.67	8.46	9.32	10.21	11.10	11.94	12.70	13.34
55	-	-	8.36	9.34	10.37	11.41	12.43	13.38	14.22
60	-	-	-	9.25	10.43	11.65	12.85	14.01	15.08

Mass flow in kg/h

30	30	45	62	82	106	133	165	201	242
35	27	42	59	79	102	130	161	197	237
40	24	38	55	75	98	125	157	192	232
45	20	34	51	71	94	121	151	186	226
50	-	30	46	66	89	115	145	180	219
55	-	-	41	61	83	109	138	172	211
60	-	-	-	55	77	102	131	164	202

Coefficient of performance (C.O.P.)

30	1.41	1.75	2.13	2.56	3.06	3.63	4.30	5.07	5.98
35	1.23	1.55	1.89	2.27	2.70	3.19	3.75	4.39	5.14
40	1.06	1.36	1.67	2.01	2.38	2.80	3.27	3.80	4.42
45	0.88	1.18	1.46	1.76	2.08	2.44	2.84	3.29	3.80
50	-	1.00	1.27	1.53	1.81	2.11	2.45	2.84	3.26
55	-	-	1.08	1.31	1.55	1.82	2.11	2.43	2.79
60	-	-	-	1.10	1.32	1.54	1.79	2.07	2.37

Nominal performance at to = -10 °C, tc = 45 °C

Cooling capacity	3 982	W
Power input	1 913	W
Current consumption	9.99	A
Mass flow	94	kg/h
C.O.P.	2.08	

to: Evaporating temperature at dew point

tc: Condensing temperature at dew point

Rating conditions : Superheat = 11.1 K , Subcooling = 8.3 K

Pressure switch settings

Maximum HP switch setting	25.8	bar(g)
Minimum LP switch setting	0.9	bar(g)
LP pump down setting	1.2	bar(g)

Sound power data

Sound power level	70	dB(A)
With acoustic hood	63	dB(A)

Tolerance according EN12900

Datasheet, performance data

Maneurop reciprocating compressor. MTZ032-5

Performance data at 50 Hz, EN 12900 rating conditions

R407F

Cond. temp. in °C (tc)	Evaporating temperature in °C (to)								
	-30	-25	-20	-15	-10	-5	0	5	10

Cooling capacity in W

30	-	2 117	3 013	4 096	5 390	6 918	8 704	10 770	13 140
35	-	1 808	2 628	3 620	4 807	6 212	7 858	9 769	11 968
40	-	1 543	2 298	3 209	4 299	5 591	7 109	8 875	10 914
45	-	1 314	2 014	2 855	3 858	5 048	6 448	8 081	9 969
50	-	-	1 769	2 549	3 477	4 575	5 868	7 377	9 126
55	-	-	-	2 284	3 147	4 164	5 359	6 756	8 376
60	-	-	-	-	-	-	-	-	-

Power input in W

30	-	1 260	1 457	1 638	1 797	1 924	2 011	2 052	2 036
35	-	1 262	1 479	1 688	1 881	2 048	2 183	2 276	2 320
40	-	1 262	1 496	1 729	1 952	2 156	2 334	2 477	2 577
45	-	1 269	1 517	1 769	2 018	2 256	2 473	2 661	2 813
50	-	-	1 548	1 817	2 088	2 354	2 606	2 837	3 037
55	-	-	-	1 879	2 169	2 460	2 744	3 012	3 257
60	-	-	-	-	-	-	-	-	-

Current consumption in A

30	-	7.70	8.31	8.92	9.49	9.97	10.30	10.44	10.33
35	-	7.83	8.46	9.11	9.75	10.32	10.76	11.04	11.08
40	-	7.89	8.56	9.28	10.01	10.68	11.26	11.68	11.91
45	-	7.90	8.63	9.44	10.27	11.07	11.80	12.39	12.81
50	-	-	8.67	9.58	10.54	11.49	12.38	13.17	13.81
55	-	-	-	9.73	10.83	11.94	13.03	14.03	14.90
60	-	-	-	-	-	-	-	-	-

Mass flow in kg/h

30	-	44	61	82	107	135	168	205	247
35	-	39	56	76	99	127	158	194	235
40	-	35	51	71	93	120	150	185	224
45	-	32	48	66	88	114	143	177	215
50	-	-	44	63	84	109	138	171	208
55	-	-	-	60	81	106	134	166	202
60	-	-	-	-	-	-	-	-	-

Coefficient of performance (C.O.P.)

30	-	1.68	2.07	2.50	3.00	3.60	4.33	5.25	6.45
35	-	1.43	1.78	2.14	2.56	3.03	3.60	4.29	5.16
40	-	1.22	1.54	1.86	2.20	2.59	3.05	3.58	4.24
45	-	1.04	1.33	1.61	1.91	2.24	2.61	3.04	3.54
50	-	-	1.14	1.40	1.67	1.94	2.25	2.60	3.00
55	-	-	-	1.22	1.45	1.69	1.95	2.24	2.57
60	-	-	-	-	-	-	-	-	-

Nominal performance at to = -10 °C, tc = 45 °C

Cooling capacity	3 858	W
Power input	2 018	W
Current consumption	10.27	A
Mass flow	88	kg/h
C.O.P.	1.91	

to: Evaporating temperature at dew point

tc: Condensing temperature at dew point

Rating conditions : Superheat = 10 K , Subcooling = 0 K

Pressure switch settings

Maximum HP switch setting	24	bar(g)
Minimum LP switch setting	1	bar(g)
LP pump down setting	1.26	bar(g)

Sound power data

Sound power level	70	dB(A)
With acoustic hood	63	dB(A)

Tolerance according EN12900

Datasheet, performance data

Maneurop reciprocating compressor. MTZ032-5

Performance data at 50 Hz, ARI rating conditions

R407F

Cond. temp. in °C (tc)	Evaporating temperature in °C (to)								
	-30	-25	-20	-15	-10	-5	0	5	10

Cooling capacity in W

30	-	2 269	3 225	4 381	5 760	7 386	9 284	11 478	13 992
35	-	1 947	2 827	3 889	5 158	6 659	8 416	10 453	12 795
40	-	1 671	2 485	3 465	4 636	6 024	7 650	9 542	11 722
45	-	1 432	2 191	3 101	4 186	5 470	6 979	8 736	10 765
50	-	-	1 939	2 790	3 800	4 993	6 394	8 028	9 920
55	-	-	-	2 523	3 470	4 584	5 891	7 415	9 180
60	-	-	-	-	-	-	-	-	-

Power input in W

30	-	1 260	1 457	1 638	1 797	1 924	2 011	2 052	2 036
35	-	1 262	1 479	1 688	1 881	2 048	2 183	2 276	2 320
40	-	1 262	1 496	1 729	1 952	2 156	2 334	2 477	2 577
45	-	1 269	1 517	1 769	2 018	2 256	2 473	2 661	2 813
50	-	-	1 548	1 817	2 088	2 354	2 606	2 837	3 037
55	-	-	-	1 879	2 169	2 460	2 744	3 012	3 257
60	-	-	-	-	-	-	-	-	-

Current consumption in A

30	-	7.70	8.31	8.92	9.49	9.97	10.30	10.44	10.33
35	-	7.83	8.46	9.11	9.75	10.32	10.76	11.04	11.08
40	-	7.89	8.56	9.28	10.01	10.68	11.26	11.68	11.91
45	-	7.90	8.63	9.44	10.27	11.07	11.80	12.39	12.81
50	-	-	8.67	9.58	10.54	11.49	12.38	13.17	13.81
55	-	-	-	9.73	10.83	11.94	13.03	14.03	14.90
60	-	-	-	-	-	-	-	-	-

Mass flow in kg/h

30	-	43	61	82	106	134	167	204	246
35	-	39	56	76	99	126	157	193	233
40	-	35	51	70	93	119	149	183	223
45	-	31	47	66	88	113	142	176	214
50	-	-	44	62	84	109	137	170	207
55	-	-	-	60	81	105	133	165	201
60	-	-	-	-	-	-	-	-	-

Coefficient of performance (C.O.P.)

30	-	1.80	2.21	2.67	3.21	3.84	4.62	5.59	6.87
35	-	1.54	1.91	2.30	2.74	3.25	3.86	4.59	5.51
40	-	1.32	1.66	2.00	2.38	2.79	3.28	3.85	4.55
45	-	1.13	1.44	1.75	2.07	2.43	2.82	3.28	3.83
50	-	-	1.25	1.54	1.82	2.12	2.45	2.83	3.27
55	-	-	-	1.34	1.60	1.86	2.15	2.46	2.82
60	-	-	-	-	-	-	-	-	-

Nominal performance at to = -10 °C, tc = 45 °C

Cooling capacity	4 186	W
Power input	2 018	W
Current consumption	10.27	A
Mass flow	88	kg/h
C.O.P.	2.07	

to: Evaporating temperature at dew point

tc: Condensing temperature at dew point

Rating conditions : Superheat = 11.1 K , Subcooling = 8.3 K

Pressure switch settings

Maximum HP switch setting	24	bar(g)
Minimum LP switch setting	1	bar(g)
LP pump down setting	1.26	bar(g)

Sound power data

Sound power level	70	dB(A)
With acoustic hood	63	dB(A)

Tolerance according EN12900

Performance data at 50 Hz, EN 12900 rating conditions
R134a

Cond. temp. in °C (tc)	Evaporating temperature in °C (to)								
	-25	-20	-10	-5	0	5	10	15	20

Cooling capacity in W

35	941	1 350	2 530	3 357	4 379	5 623	7 118	8 891	10 969
40	806	1 196	2 306	3 082	4 041	5 212	6 622	8 299	10 271
45	669	1 039	2 076	2 799	3 694	4 790	6 115	7 695	9 560
50	534	882	1 843	2 511	3 341	4 361	5 599	7 081	8 836
55	-	-	1 611	2 223	2 986	3 929	5 077	6 460	8 105
60	-	-	-	1 937	2 632	3 495	4 554	5 836	7 369
65	-	-	-	-	2 282	3 064	4 032	5 211	6 631
75	-	-	-	-	-	-	3 004	3 975	5 163

Power input in W

35	773	925	1 220	1 351	1 465	1 554	1 613	1 637	1 619
40	793	950	1 262	1 407	1 535	1 642	1 721	1 767	1 774
45	801	964	1 298	1 456	1 601	1 727	1 828	1 898	1 932
50	795	967	1 325	1 499	1 663	1 809	1 933	2 029	2 091
55	-	-	1 344	1 535	1 718	1 887	2 036	2 160	2 251
60	-	-	-	1 564	1 768	1 961	2 137	2 289	2 412
65	-	-	-	-	1 812	2 031	2 234	2 417	2 572
75	-	-	-	-	-	-	2 417	2 665	2 892

Current consumption in A

35	7.58	7.89	8.50	8.77	9.00	9.18	9.30	9.35	9.30
40	7.62	7.95	8.62	8.93	9.20	9.44	9.62	9.73	9.77
45	7.63	7.99	8.71	9.07	9.40	9.69	9.94	10.13	10.24
50	7.61	7.98	8.79	9.19	9.57	9.93	10.25	10.52	10.72
55	-	-	8.83	9.28	9.73	10.16	10.55	10.90	11.20
60	-	-	-	9.35	9.86	10.36	10.83	11.27	11.67
65	-	-	-	-	9.95	10.53	11.09	11.63	12.12
75	-	-	-	-	-	-	11.52	12.25	12.96

Mass flow in kg/h

35	24	34	60	78	99	125	156	191	233
40	22	31	58	75	96	122	152	187	228
45	19	29	55	72	93	118	147	182	222
50	16	26	52	68	89	113	142	176	216
55	-	-	48	64	84	108	137	170	209
60	-	-	-	60	80	103	131	163	202
65	-	-	-	-	74	97	124	156	194
75	-	-	-	-	-	-	109	139	175

Coefficient of performance (C.O.P.)

35	1.22	1.46	2.07	2.48	2.99	3.62	4.41	5.43	6.78
40	1.02	1.26	1.83	2.19	2.63	3.17	3.85	4.70	5.79
45	0.84	1.08	1.60	1.92	2.31	2.77	3.34	4.05	4.95
50	0.67	0.91	1.39	1.68	2.01	2.41	2.90	3.49	4.23
55	-	-	1.20	1.45	1.74	2.08	2.49	2.99	3.60
60	-	-	-	1.24	1.49	1.78	2.13	2.55	3.06
65	-	-	-	-	1.26	1.51	1.80	2.16	2.58
75	-	-	-	-	-	-	1.24	1.49	1.79

Nominal performance at to = 5 °C, tc = 50 °C

Cooling capacity	4 361	W
Power input	1 809	W
Current consumption	9.93	A
Mass flow	113	kg/h
C.O.P.	2.41	

Pressure switch settings

Maximum HP switch setting	20.2	bar(g)
Minimum LP switch setting	0.1	bar(g)
LP pump down setting	0.4	bar(g)

Sound power data

Sound power level	0	dB(A)
With accoustic hood	0	dB(A)

to: Evaporating temperature at dew point

tc: Condensing temperature at dew point

Rating conditions : Superheat = 10 K , Subcooling = 0 K

Tolerance according EN12900

Danfoss can accept no responsibility for possible errors in catalogues, brochures and other printed material. Danfoss reserves the right to alter its products without notice. This also applies to products already on order provided that such alternations can be made without subsequential changes being necessary in specifications already agreed. All trademarks in this material are property of the respective companies. Danfoss, the Danfoss logotype and Maneurop are trademarks of Danfoss A/S. All rights reserved.

Performance data at 50 Hz, ARI rating conditions
R134a

Cond. temp. in °C (tc)	Evaporating temperature in °C (to)								
	-25	-20	-10	-5	0	5	10	15	20

Cooling capacity in W

35	1 023	1 465	2 736	3 624	4 720	6 052	7 650	9 541	11 756
40	882	1 305	2 507	3 344	4 377	5 636	7 149	8 947	11 056
45	737	1 141	2 270	3 054	4 023	5 207	6 636	8 337	10 340
50	-	976	2 029	2 759	3 662	4 770	6 112	7 715	9 611
55	-	-	1 788	2 461	3 298	4 328	5 581	7 086	8 872
60	-	-	-	2 164	2 932	3 883	5 046	6 451	8 127
65	-	-	-	-	-	3 440	4 512	5 816	7 380
75	-	-	-	-	-	-	3 457	4 555	5 896

Power input in W

35	773	925	1 220	1 351	1 465	1 554	1 613	1 637	1 619
40	793	950	1 262	1 407	1 535	1 642	1 721	1 767	1 774
45	801	964	1 298	1 456	1 601	1 727	1 828	1 898	1 932
50	-	967	1 325	1 499	1 663	1 809	1 933	2 029	2 091
55	-	-	1 344	1 535	1 718	1 887	2 036	2 160	2 251
60	-	-	-	1 564	1 768	1 961	2 137	2 289	2 412
65	-	-	-	-	-	2 031	2 234	2 417	2 572
75	-	-	-	-	-	-	2 417	2 665	2 892

Current consumption in A

35	7.58	7.89	8.50	8.77	9.00	9.18	9.30	9.35	9.30
40	7.62	7.95	8.62	8.93	9.20	9.44	9.62	9.73	9.77
45	7.63	7.99	8.71	9.07	9.40	9.69	9.94	10.13	10.24
50	-	7.98	8.79	9.19	9.57	9.93	10.25	10.52	10.72
55	-	-	8.83	9.28	9.73	10.16	10.55	10.90	11.20
60	-	-	-	9.35	9.86	10.36	10.83	11.27	11.67
65	-	-	-	-	-	10.53	11.09	11.63	12.12
75	-	-	-	-	-	-	11.52	12.25	12.96

Mass flow in kg/h

35	24	34	60	78	99	125	155	190	232
40	22	31	57	75	96	121	151	186	227
45	19	29	55	72	92	117	147	181	221
50	-	26	51	68	88	113	142	176	215
55	-	-	48	64	84	108	136	169	208
60	-	-	-	60	79	102	130	163	201
65	-	-	-	-	-	96	123	155	192
75	-	-	-	-	-	-	108	139	174

Coefficient of performance (C.O.P.)

35	1.32	1.58	2.24	2.68	3.22	3.90	4.74	5.83	7.26
40	1.11	1.37	1.99	2.38	2.85	3.43	4.15	5.06	6.23
45	0.92	1.18	1.75	2.10	2.51	3.02	3.63	4.39	5.35
50	-	1.01	1.53	1.84	2.20	2.64	3.16	3.80	4.60
55	-	-	1.33	1.60	1.92	2.29	2.74	3.28	3.94
60	-	-	-	1.38	1.66	1.98	2.36	2.82	3.37
65	-	-	-	-	-	1.69	2.02	2.41	2.87
75	-	-	-	-	-	-	1.43	1.71	2.04

Nominal performance at to = 7.2 °C, tc = 54.4 °C

Cooling capacity	4 908	W
Power input	1 945	W
Current consumption	10.30	A
Mass flow	120	kg/h
C.O.P.	2.52	

Pressure switch settings

Maximum HP switch setting	20.2	bar(g)
Minimum LP switch setting	0.1	bar(g)
LP pump down setting	0.4	bar(g)

Sound power data

Sound power level	0	dB(A)
With accoustic hood	0	dB(A)

to: Evaporating temperature at dew point

tc: Condensing temperature at dew point

Rating conditions : Superheat = 11.1 K , Subcooling = 8.3 K

Tolerance according EN12900

Danfoss can accept no responsibility for possible errors in catalogues, brochures and other printed material. Danfoss reserves the right to alter its products without notice.
This also applies to products already on order provided that such alternations can be made without subsequential changes being necessary in specifications already agreed.
All trademarks in this material are property of the respective companies. Danfoss, the Danfoss logotype and Maneurop are trademarks of Danfoss A/S. All rights reserved.

Datasheet, performance data

Maneurop reciprocating compressor. MTZ032-5

Performance data at 50 Hz, EN 12900 rating conditions

R407C

Cond. temp. in °C (tc)	Evaporating temperature in °C (to)							
	-15	-10	-5	0	5	10	15	

Cooling capacity in W

35	3 058	4 162	5 461	6 979	8 741	10 770	13 090	-	-
40	2 719	3 767	4 992	6 419	8 071	9 973	12 147	-	-
45	2 376	3 369	4 521	5 857	7 401	9 176	11 206	-	-
50	-	2 967	4 048	5 295	6 731	8 380	10 267	-	-
55	-	-	3 574	4 732	6 062	7 587	9 332	-	-
60	-	-	-	4 170	5 394	6 797	8 401	-	-
65	-	-	-	3 609	4 730	6 010	7 474	-	-

Power input in W

35	1 495	1 668	1 816	1 938	2 029	2 087	2 109	-	-
40	1 525	1 726	1 904	2 058	2 182	2 276	2 335	-	-
45	1 539	1 771	1 982	2 170	2 331	2 462	2 561	-	-
50	-	1 806	2 053	2 277	2 477	2 649	2 791	-	-
55	-	-	2 120	2 384	2 625	2 841	3 027	-	-
60	-	-	-	2 493	2 778	3 040	3 274	-	-
65	-	-	-	2 608	2 940	3 250	3 534	-	-

Current consumption in A

35	8.25	8.80	9.29	9.73	10.11	10.43	10.69	-	-
40	8.32	9.01	9.62	10.17	10.63	11.02	11.32	-	-
45	8.28	9.14	9.92	10.60	11.19	11.68	12.07	-	-
50	-	9.21	10.18	11.04	11.79	12.42	12.94	-	-
55	-	-	10.44	11.51	12.46	13.27	13.95	-	-
60	-	-	-	12.02	13.20	14.23	15.11	-	-
65	-	-	-	12.57	14.03	15.32	16.43	-	-

Mass flow in kg/h

35	66	89	115	144	178	216	259	-	-
40	62	84	110	139	172	210	252	-	-
45	57	80	105	134	166	203	244	-	-
50	-	74	100	128	160	196	236	-	-
55	-	-	94	122	153	188	227	-	-
60	-	-	-	115	146	180	218	-	-
65	-	-	-	107	138	171	209	-	-

Coefficient of performance (C.O.P.)

35	2.04	2.49	3.01	3.60	4.31	5.16	6.21	-	-
40	1.78	2.18	2.62	3.12	3.70	4.38	5.20	-	-
45	1.54	1.90	2.28	2.70	3.18	3.73	4.38	-	-
50	-	1.64	1.97	2.33	2.72	3.16	3.68	-	-
55	-	-	1.69	1.98	2.31	2.67	3.08	-	-
60	-	-	-	1.67	1.94	2.24	2.57	-	-
65	-	-	-	1.38	1.61	1.85	2.11	-	-

Nominal performance at to = 5 °C, tc = 50 °C

Cooling capacity	6 731	W
Power input	2 477	W
Current consumption	11.79	A
Mass flow	160	kg/h
C.O.P.	2.72	



to: Evaporating temperature at dew point

tc: Condensing temperature at dew point

Rating conditions : Superheat = 10 K , Subcooling = 0 K

Pressure switch settings

Maximum HP switch setting	29.4	bar(g)
Minimum LP switch setting	1.4	bar(g)
LP pump down setting	1.7	bar(g)

Sound power data

Sound power level	74	dB(A)
With acoustic hood	67	dB(A)

Tolerance according EN12900

Datasheet, performance data

Maneurop reciprocating compressor. MTZ032-5

Performance data at 50 Hz, ARI rating conditions

R407C

Cond. temp. in °C (tc)	Evaporating temperature in °C (to)							
	-15	-10	-5	0	5	10	15	

Cooling capacity in W

35	3 291	4 474	5 864	7 486	9 365	11 527	13 996	-	-
40	2 943	4 071	5 388	6 920	8 690	10 725	13 049	-	-
45	2 588	3 663	4 909	6 351	8 014	9 923	12 104	-	-
50	-	3 250	4 427	5 781	7 338	9 123	11 162	-	-
55	-	-	3 942	5 209	6 662	8 324	10 223	-	-
60	-	-	-	4 638	5 988	7 530	9 290	-	-
65	-	-	-	4 067	5 317	6 741	8 365	-	-

Power input in W

35	1 495	1 668	1 816	1 938	2 029	2 087	2 109	-	-
40	1 525	1 726	1 904	2 058	2 182	2 276	2 335	-	-
45	1 539	1 771	1 982	2 170	2 331	2 462	2 561	-	-
50	-	1 806	2 053	2 277	2 477	2 649	2 791	-	-
55	-	-	2 120	2 384	2 625	2 841	3 027	-	-
60	-	-	-	2 493	2 778	3 040	3 274	-	-
65	-	-	-	2 608	2 940	3 250	3 534	-	-

Current consumption in A

35	8.25	8.80	9.29	9.73	10.11	10.43	10.69	-	-
40	8.32	9.01	9.62	10.17	10.63	11.02	11.32	-	-
45	8.28	9.14	9.92	10.60	11.19	11.68	12.07	-	-
50	-	9.21	10.18	11.04	11.79	12.42	12.94	-	-
55	-	-	10.44	11.51	12.46	13.27	13.95	-	-
60	-	-	-	12.02	13.20	14.23	15.11	-	-
65	-	-	-	12.57	14.03	15.32	16.43	-	-

Mass flow in kg/h

35	66	88	114	143	177	215	258	-	-
40	62	84	109	138	171	208	250	-	-
45	57	79	104	133	165	202	243	-	-
50	-	74	99	127	159	194	234	-	-
55	-	-	93	121	152	187	226	-	-
60	-	-	-	114	145	179	217	-	-
65	-	-	-	107	137	170	208	-	-

Coefficient of performance (C.O.P.)

35	2.20	2.68	3.23	3.86	4.62	5.52	6.64	-	-
40	1.93	2.36	2.83	3.36	3.98	4.71	5.59	-	-
45	1.68	2.07	2.48	2.93	3.44	4.03	4.73	-	-
50	-	1.80	2.16	2.54	2.96	3.44	4.00	-	-
55	-	-	1.86	2.19	2.54	2.93	3.38	-	-
60	-	-	-	1.86	2.16	2.48	2.84	-	-
65	-	-	-	1.56	1.81	2.07	2.37	-	-

Nominal performance at to = 7.2 °C, tc = 54.4 °C

Cooling capacity	7 453	W
Power input	2 703	W
Current consumption	12.74	A
Mass flow	168	kg/h
C.O.P.	2.76	

to: Evaporating temperature at dew point

tc: Condensing temperature at dew point

Rating conditions : Superheat = 11.1 K , Subcooling = 8.3 K

Pressure switch settings

Maximum HP switch setting	29.4	bar(g)
Minimum LP switch setting	1.4	bar(g)
LP pump down setting	1.7	bar(g)

Sound power data

Sound power level	74	dB(A)
With acoustic hood	67	dB(A)

Tolerance according EN12900

Datasheet, performance data

Maneurop reciprocating compressor. MTZ032-5

Performance data at 50 Hz, EN 12900 rating conditions, Suction temp. = 20 °C

R448A

Cond. temp. in °C (tc)	Evaporating temperature in °C (to)								
	-30	-25	-20	-15	-10	-5	0	5	10

Cooling capacity in W

10	-	2 707	3 513	4 485	5 640	-	-	-	-
20	-	2 444	3 217	4 135	5 216	6 480	7 947	-	-
30	-	2 099	2 830	3 687	4 687	5 847	7 186	8 726	10 492
40	-	-	2 372	3 160	4 070	5 118	6 323	7 703	9 280
50	-	-	-	2 572	3 385	4 314	5 376	6 588	7 968
60	-	-	-	-	2 649	3 453	4 365	5 402	6 577

Power input in W

10	-	1 113	1 164	1 187	1 182	-	-	-	-
20	-	1 245	1 343	1 416	1 463	1 482	1 472	-	-
30	-	1 326	1 474	1 598	1 699	1 774	1 821	1 840	1 829
40	-	-	1 552	1 730	1 886	2 018	2 125	2 206	2 259
50	-	-	-	1 808	2 021	2 212	2 381	2 525	2 644
60	-	-	-	-	2 101	2 354	2 585	2 795	2 981

Current consumption in A

10	-	3.84	4.50	5.05	5.50	-	-	-	-
20	-	5.83	6.52	7.10	7.58	7.95	8.21	-	-
30	-	6.98	7.79	8.49	9.08	9.57	9.95	10.23	10.40
40	-	-	8.43	9.33	10.14	10.83	11.42	11.90	12.28
50	-	-	-	9.74	10.84	11.83	12.71	13.49	14.16
60	-	-	-	-	11.31	12.68	13.95	15.11	16.16

Mass flow in kg/h

10	-	45	58	75	94	-	-	-	-
20	-	43	57	74	93	116	144	-	-
30	-	40	54	71	91	114	141	173	211
40	-	-	50	66	86	109	136	168	206
50	-	-	-	60	80	103	129	161	197
60	-	-	-	-	71	94	120	151	187

Coefficient of performance (C.O.P.)

10	-	2.43	3.02	3.78	4.77	-	-	-	-
20	-	1.96	2.39	2.92	3.56	4.37	5.40	-	-
30	-	1.58	1.92	2.31	2.76	3.30	3.95	4.74	5.74
40	-	-	1.53	1.83	2.16	2.54	2.97	3.49	4.11
50	-	-	-	1.42	1.67	1.95	2.26	2.61	3.01
60	-	-	-	-	1.26	1.47	1.69	1.93	2.21

Nominal performance at to = -10 °C, tc = 45 °C

Cooling capacity	3 735	W
Power input	1 960	W
Current consumption	10.52	A
Mass flow	83	kg/h
C.O.P.	1.91	

to: Evaporating temperature at dew point

tc: Condensing temperature at dew point

Rating conditions : Suction gas temp. = 20 °C , Subcooling = 0 K

Pressure switch settings

Maximum HP switch setting	27.7	bar(g)
Minimum LP switch setting	1	bar(g)
LP pump down setting	1.3	bar(g)

Sound power data

Sound power level	73	dB(A)
With acoustic hood	66	dB(A)

Tolerance according EN12900

Datasheet, performance data

Maneurop reciprocating compressor. MTZ032-5

Performance data at 50 Hz, EN 12900 rating conditions, Superheat = 10 K

R448A

Cond. temp. in °C (tc)	Evaporating temperature in °C (to)								
	-30	-25	-20	-15	-10	-5	0	5	10

Cooling capacity in W

10	2 058	2 721	3 533	4 512	5 676	-	-	-	-
20	1 784	2 428	3 203	4 126	5 215	6 488	7 961	-	-
30	1 440	2 056	2 785	3 643	4 648	5 817	7 169	8 722	10 492
40	1 046	1 626	2 299	3 083	3 995	5 053	6 275	7 678	9 280
50	-	1 157	1 766	2 467	3 277	4 215	5 298	6 543	7 968
60	-	-	1 207	1 817	2 517	3 325	4 260	5 338	6 577

Power input in W

10	1 037	1 113	1 164	1 187	1 182	-	-	-	-
20	1 124	1 245	1 343	1 416	1 463	1 482	1 472	-	-
30	1 158	1 326	1 474	1 598	1 699	1 774	1 821	1 840	1 829
40	1 136	1 354	1 552	1 730	1 886	2 018	2 125	2 206	2 259
50	-	1 324	1 575	1 808	2 021	2 212	2 381	2 525	2 644
60	-	-	1 540	1 830	2 101	2 354	2 585	2 795	2 981

Current consumption in A

10	3.07	3.84	4.50	5.05	5.50	-	-	-	-
20	5.03	5.83	6.52	7.10	7.58	7.95	8.21	-	-
30	6.06	6.98	7.79	8.49	9.08	9.57	9.95	10.23	10.40
40	6.28	7.41	8.43	9.33	10.14	10.83	11.42	11.90	12.28
50	-	7.22	8.54	9.74	10.84	11.83	12.71	13.49	14.16
60	-	-	8.24	9.83	11.31	12.68	13.95	15.11	16.16

Mass flow in kg/h

10	40	52	67	84	104	-	-	-	-
20	37	50	65	82	102	125	152	-	-
30	33	46	62	79	99	122	148	178	211
40	27	41	57	74	95	117	143	173	206
50	-	33	49	67	88	110	136	165	197
60	-	-	40	58	78	101	127	155	187

Coefficient of performance (C.O.P.)

10	1.98	2.44	3.04	3.80	4.80	-	-	-	-
20	1.59	1.95	2.38	2.91	3.56	4.38	5.41	-	-
30	1.24	1.55	1.89	2.28	2.74	3.28	3.94	4.74	5.74
40	0.92	1.20	1.48	1.78	2.12	2.50	2.95	3.48	4.11
50	-	0.87	1.12	1.36	1.62	1.91	2.22	2.59	3.01
60	-	-	0.78	0.99	1.20	1.41	1.65	1.91	2.21

Nominal performance at to = -10 °C, tc = 45 °C

Cooling capacity	3 643	W
Power input	1 960	W
Current consumption	10.52	A
Mass flow	91	kg/h
C.O.P.	1.86	

to: Evaporating temperature at dew point

tc: Condensing temperature at dew point

Rating conditions : Superheat = 10 K , Subcooling = 0 K

Pressure switch settings

Maximum HP switch setting	27.7	bar(g)
Minimum LP switch setting	1	bar(g)
LP pump down setting	1.3	bar(g)

Sound power data

Sound power level	73	dB(A)
With acoustic hood	66	dB(A)

Tolerance according EN12900

Datasheet, performance data

Maneurop reciprocating compressor. MTZ032-5

Performance data at 50 Hz, EN 12900 rating conditions, Suction temp. = 20 °C

R449A

Cond. temp. in °C (tc)	Evaporating temperature in °C (to)								
	-30	-25	-20	-15	-10	-5	0	5	10

Cooling capacity in W

10	-	2 712	3 519	4 490	5 645	-	-	-	-
20	-	2 450	3 222	4 141	5 222	6 485	7 951	-	-
30	-	2 104	2 836	3 693	4 693	5 852	7 191	8 729	10 492
40	-	-	2 378	3 167	4 077	5 124	6 328	7 706	9 280
50	-	-	-	2 579	3 392	4 320	5 381	6 591	7 968
60	-	-	-	-	2 656	3 459	4 370	5 405	6 577

Power input in W

10	-	1 113	1 164	1 187	1 182	-	-	-	-
20	-	1 245	1 343	1 416	1 463	1 482	1 472	-	-
30	-	1 326	1 474	1 598	1 699	1 774	1 821	1 840	1 829
40	-	-	1 552	1 730	1 886	2 018	2 125	2 206	2 259
50	-	-	-	1 808	2 021	2 212	2 381	2 525	2 644
60	-	-	-	-	2 101	2 353	2 585	2 795	2 980

Current consumption in A

10	-	3.84	4.50	5.05	5.50	-	-	-	-
20	-	5.83	6.52	7.10	7.58	7.95	8.21	-	-
30	-	6.98	7.79	8.49	9.08	9.57	9.95	10.23	10.40
40	-	-	8.42	9.33	10.13	10.83	11.42	11.90	12.28
50	-	-	-	9.74	10.84	11.83	12.71	13.49	14.16
60	-	-	-	-	11.31	12.68	13.95	15.11	16.16

Mass flow in kg/h

10	-	46	60	77	97	-	-	-	-
20	-	44	58	75	95	119	147	-	-
30	-	41	55	72	92	116	144	177	216
40	-	-	51	68	88	111	139	171	209
50	-	-	-	62	82	105	132	164	202
60	-	-	-	-	73	96	123	155	191

Coefficient of performance (C.O.P.)

10	-	2.44	3.02	3.78	4.78	-	-	-	-
20	-	1.97	2.40	2.92	3.57	4.38	5.40	-	-
30	-	1.59	1.92	2.31	2.76	3.30	3.95	4.74	5.74
40	-	-	1.53	1.83	2.16	2.54	2.98	3.49	4.11
50	-	-	-	1.43	1.68	1.95	2.26	2.61	3.01
60	-	-	-	-	1.26	1.47	1.69	1.93	2.21

Nominal performance at to = -10 °C, tc = 45 °C

Cooling capacity	3 741	W
Power input	1 960	W
Current consumption	10.52	A
Mass flow	85	kg/h
C.O.P.	1.91	

to: Evaporating temperature at dew point

tc: Condensing temperature at dew point

Rating conditions : Suction gas temp. = 20 °C , Subcooling = 0 K

Pressure switch settings

Maximum HP switch setting	27.7	bar(g)
Minimum LP switch setting	1	bar(g)
LP pump down setting	1.3	bar(g)

Sound power data

Sound power level	73	dB(A)
With acoustic hood	66	dB(A)

Tolerance according EN12900

Datasheet, performance data

Maneurop reciprocating compressor. MTZ032-5

Performance data at 50 Hz, EN 12900 rating conditions, Superheat = 10 K

R449A

Cond. temp. in °C (tc)	Evaporating temperature in °C (to)								
	-30	-25	-20	-15	-10	-5	0	5	10

Cooling capacity in W

10	2 058	2 721	3 533	4 512	5 676	-	-	-	-
20	1 784	2 428	3 203	4 126	5 215	6 488	7 961	-	-
30	1 440	2 056	2 785	3 643	4 648	5 817	7 169	8 722	10 492
40	1 046	1 626	2 299	3 083	3 995	5 053	6 275	7 678	9 280
50	-	1 157	1 766	2 467	3 277	4 215	5 298	6 543	7 968
60	-	-	1 207	1 817	2 517	3 325	4 260	5 338	6 577

Power input in W

10	1 037	1 113	1 164	1 187	1 182	-	-	-	-
20	1 124	1 245	1 343	1 416	1 463	1 482	1 472	-	-
30	1 158	1 326	1 474	1 598	1 699	1 774	1 821	1 840	1 829
40	1 136	1 354	1 552	1 730	1 886	2 018	2 125	2 206	2 259
50	-	1 324	1 575	1 808	2 021	2 212	2 381	2 525	2 644
60	-	-	1 540	1 829	2 101	2 353	2 585	2 795	2 980

Current consumption in A

10	3.07	3.84	4.50	5.05	5.50	-	-	-	-
20	5.03	5.83	6.52	7.10	7.58	7.95	8.21	-	-
30	6.06	6.98	7.79	8.49	9.08	9.57	9.95	10.23	10.40
40	6.28	7.41	8.42	9.33	10.13	10.83	11.42	11.90	12.28
50	-	7.22	8.54	9.74	10.84	11.83	12.71	13.49	14.16
60	-	-	8.24	9.83	11.31	12.68	13.95	15.11	16.16

Mass flow in kg/h

10	40	53	68	86	106	-	-	-	-
20	38	51	66	84	104	128	155	-	-
30	33	47	63	81	101	125	151	181	216
40	27	42	58	76	97	120	146	176	209
50	-	34	50	69	90	113	139	169	202
60	-	-	40	59	80	104	130	159	191

Coefficient of performance (C.O.P.)

10	1.98	2.44	3.04	3.80	4.80	-	-	-	-
20	1.59	1.95	2.38	2.91	3.56	4.38	5.41	-	-
30	1.24	1.55	1.89	2.28	2.74	3.28	3.94	4.74	5.74
40	0.92	1.20	1.48	1.78	2.12	2.50	2.95	3.48	4.11
50	-	0.87	1.12	1.36	1.62	1.91	2.23	2.59	3.01
60	-	-	0.78	0.99	1.20	1.41	1.65	1.91	2.21

Nominal performance at to = -10 °C, tc = 45 °C

Cooling capacity	3 643	W
Power input	1 960	W
Current consumption	10.52	A
Mass flow	93	kg/h
C.O.P.	1.86	

to: Evaporating temperature at dew point

tc: Condensing temperature at dew point

Rating conditions : Superheat = 10 K , Subcooling = 0 K

Pressure switch settings

Maximum HP switch setting	27.7	bar(g)
Minimum LP switch setting	1	bar(g)
LP pump down setting	1.3	bar(g)

Sound power data

Sound power level	73	dB(A)
With accoustic hood	66	dB(A)

Tolerance according EN12900

Datasheet, performance data

Maneurop reciprocating compressor. MTZ032-5

Performance data at 50 Hz, EN 12900 rating conditions, Suction temp. = 20 °C

R452A

Cond. temp. in °C (tc)	Evaporating temperature in °C (to)								
	-30	-25	-20	-15	-10	-5	0	5	10

Cooling capacity in W

10	-	3 446	4 474	5 703	7 155	-	-	-	-
20	-	2 826	3 779	4 912	6 243	7 790	9 577	-	-
30	-	2 187	3 055	4 080	5 279	6 671	8 273	10 109	12 203
40	-	1 553	2 326	3 234	4 291	5 516	6 925	8 536	10 372
50	-	-	1 618	2 397	3 304	4 353	5 559	6 937	8 503
60	-	-	-	1 598	2 346	3 211	4 205	5 339	6 624

Power input in W

10	-	1 399	1 454	1 478	1 473	-	-	-	-
20	-	1 452	1 552	1 622	1 661	1 673	1 658	-	-
30	-	1 447	1 600	1 722	1 814	1 878	1 915	1 926	1 912
40	-	1 384	1 597	1 780	1 932	2 056	2 153	2 224	2 270
50	-	-	1 546	1 796	2 017	2 209	2 373	2 511	2 624
60	-	-	-	1 772	2 068	2 335	2 575	2 788	2 976

Current consumption in A

10	-	7.47	8.17	8.64	8.88	-	-	-	-
20	-	7.35	8.01	8.49	8.79	8.92	8.89	-	-
30	-	7.64	8.33	8.88	9.30	9.59	9.75	9.80	9.74
40	-	7.92	8.69	9.37	9.96	10.46	10.89	11.24	11.53
50	-	-	8.64	9.50	10.32	11.10	11.84	12.56	13.25
60	-	-	-	8.83	9.94	11.05	12.17	13.31	14.47

Mass flow in kg/h

10	-	72	94	120	151	-	-	-	-
20	-	63	85	111	141	177	220	-	-
30	-	53	75	100	130	166	208	257	316
40	-	42	63	88	118	153	194	243	301
50	-	-	50	75	104	139	179	227	284
60	-	-	-	59	88	122	162	210	266

Coefficient of performance (C.O.P.)

10	-	2.46	3.08	3.86	4.86	-	-	-	-
20	-	1.95	2.43	3.03	3.76	4.66	5.78	-	-
30	-	1.51	1.91	2.37	2.91	3.55	4.32	5.25	6.38
40	-	1.12	1.46	1.82	2.22	2.68	3.22	3.84	4.57
50	-	-	1.05	1.33	1.64	1.97	2.34	2.76	3.24
60	-	-	-	0.90	1.13	1.37	1.63	1.92	2.23

Nominal performance at to = -10 °C, tc = 45 °C

Cooling capacity	3 796	W
Power input	1 979	W
Current consumption	10.20	A
Mass flow	111	kg/h
C.O.P.	1.92	

to: Evaporating temperature at dew point

tc: Condensing temperature at dew point

Rating conditions : Suction gas temp. = 20 °C , Subcooling = 0 K

Pressure switch settings

Maximum HP switch setting	27.7	bar(g)
Minimum LP switch setting	1	bar(g)
LP pump down setting	1.3	bar(g)

Sound power data

Sound power level	73	dB(A)
With acoustic hood	66	dB(A)

Tolerance according EN12900

Datasheet, performance data

Maneurop reciprocating compressor. MTZ032-5

Performance data at 50 Hz, EN 12900 rating conditions, Superheat = 10 K

R452A

Cond. temp. in °C (tc)	Evaporating temperature in °C (to)								
	-30	-25	-20	-15	-10	-5	0	5	10

Cooling capacity in W

10	2 518	3 354	4 380	5 615	7 079	-	-	-	-
20	1 931	2 705	3 647	4 778	6 117	7 685	9 503	-	-
30	1 351	2 049	2 895	3 909	5 110	6 520	8 158	10 046	12 203
40	804	1 415	2 152	3 036	4 087	5 326	6 773	8 448	10 372
50	321	831	1 447	2 189	3 077	4 133	5 375	6 825	8 503
60	-	325	807	1 394	2 108	2 967	3 993	5 205	6 624

Power input in W

10	1 313	1 399	1 454	1 478	1 473	-	-	-	-
20	1 320	1 452	1 552	1 622	1 661	1 673	1 658	-	-
30	1 261	1 447	1 600	1 722	1 814	1 878	1 915	1 926	1 912
40	1 137	1 384	1 597	1 780	1 932	2 056	2 153	2 224	2 270
50	949	1 263	1 546	1 796	2 017	2 209	2 373	2 511	2 624
60	-	1 087	1 445	1 772	2 068	2 335	2 575	2 788	2 976

Current consumption in A

10	6.55	7.47	8.17	8.64	8.88	-	-	-	-
20	6.49	7.35	8.01	8.49	8.79	8.92	8.89	-	-
30	6.81	7.64	8.33	8.88	9.30	9.59	9.75	9.80	9.74
40	7.05	7.92	8.69	9.37	9.96	10.46	10.89	11.24	11.53
50	6.77	7.73	8.64	9.50	10.32	11.10	11.84	12.56	13.25
60	-	6.62	7.73	8.83	9.94	11.05	12.17	13.31	14.47

Mass flow in kg/h

10	63	83	107	134	166	-	-	-	-
20	53	73	97	124	155	191	232	-	-
30	42	62	85	112	143	179	219	265	316
40	29	49	72	99	130	165	205	250	301
50	14	34	57	84	114	149	189	234	284
60	-	17	40	67	97	132	171	216	266

Coefficient of performance (C.O.P.)

10	1.92	2.40	3.01	3.80	4.81	-	-	-	-
20	1.46	1.86	2.35	2.95	3.68	4.59	5.73	-	-
30	1.07	1.42	1.81	2.27	2.82	3.47	4.26	5.22	6.38
40	0.71	1.02	1.35	1.71	2.12	2.59	3.15	3.80	4.57
50	0.34	0.66	0.94	1.22	1.53	1.87	2.27	2.72	3.24
60	-	0.30	0.56	0.79	1.02	1.27	1.55	1.87	2.23

Nominal performance at to = -10 °C, tc = 45 °C

Cooling capacity	3 579	W
Power input	1 979	W
Current consumption	10.20	A
Mass flow	122	kg/h
C.O.P.	1.81	

to: Evaporating temperature at dew point

tc: Condensing temperature at dew point

Rating conditions : Superheat = 10 K , Subcooling = 0 K

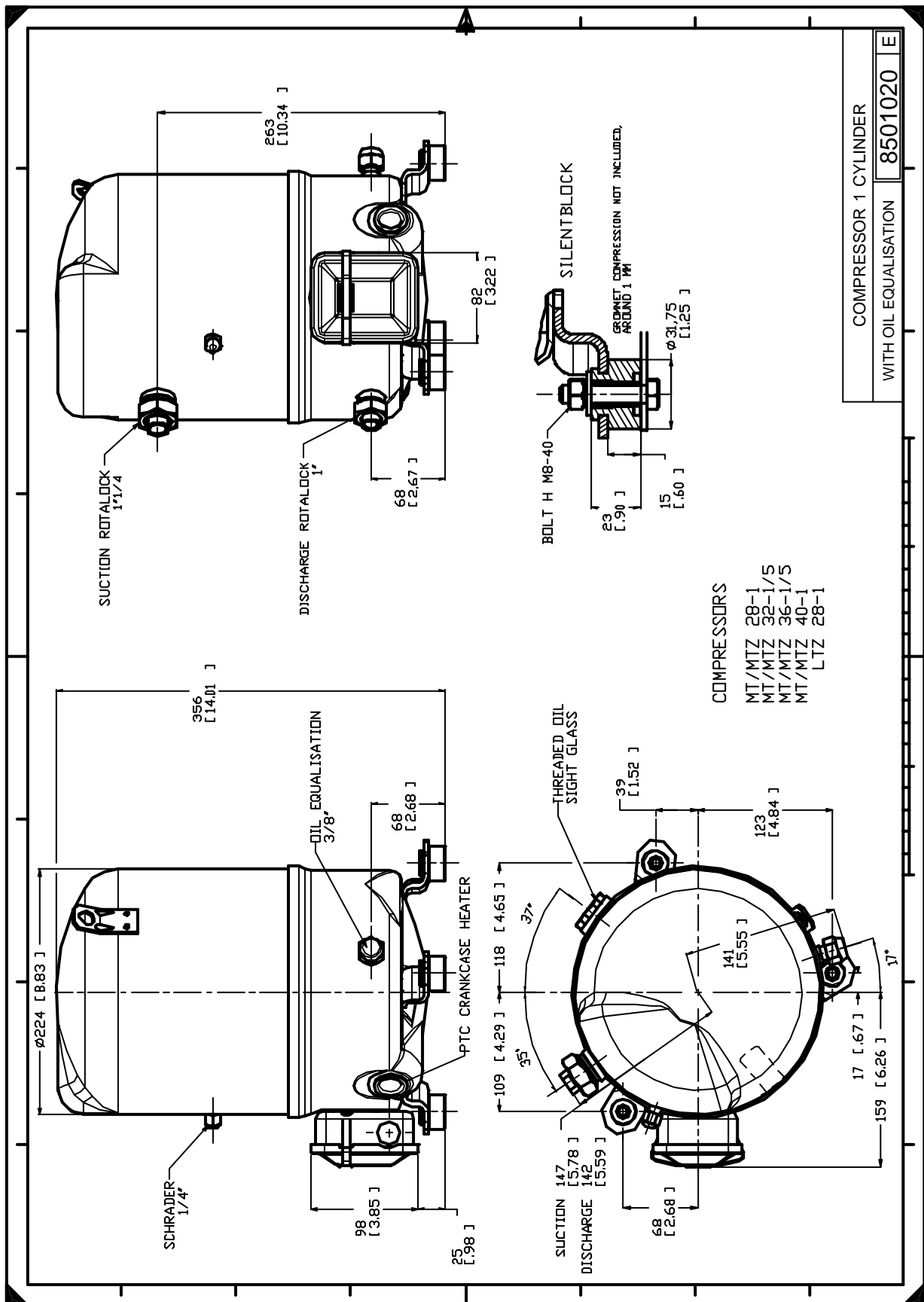
Pressure switch settings

Maximum HP switch setting	27.7	bar(g)
Minimum LP switch setting	1	bar(g)
LP pump down setting	1.3	bar(g)

Sound power data

Sound power level	73	dB(A)
With acoustic hood	66	dB(A)

Tolerance according EN12900



COMPRESSOR 1 CYLINDER

WITH OIL EQUALISATION 8501020 E