

Datasheets

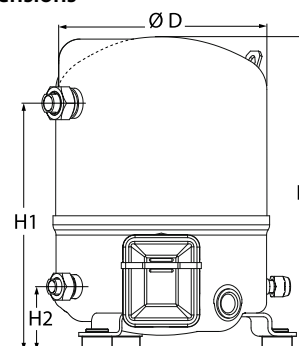
Danfoss Reciprocating compressors **MT / MTZ / NTZ**



General Characteristics

Model number (on compressor nameplate)		MTZ36JG5AVE
Code number for Singlepack*		MTZ36-5VI
Code number for Industrial pack**		MTZ36-5VM
Drawing number		8501020e
Suction and discharge connections		Rotolock
Suction connection		1-1/4" Rotolock
Discharge connection		1" Rotolock
Suction connection with supplied sleeve		5/8" ODF
Discharge connection with supplied sleeve		1/2" ODF
Oil sight glass		Threaded
Oil equalisation connection		3/8" flare SAE
Oil drain connection		None
LP gauge port		Schrader
IPR valve		None
Cylinders	1	
Swept volume	60.47 cm ³ /rev	
Displacement @ Nominal speed	10.5 m ³ /h @ 2900 rpm	
Net weight	25 kg	
Oil charge	0.95 litre, POE - 175PZ	
Maximum system test pressure Low Side / High side	25 bar(g) / 30 bar(g)	
Maximum differential test pressure	30 bar	
Maximum number of starts per hour	12	
Refrigerant charge limit	2.5 kg	
Approved refrigerants	R404A, R134a, R407A/C/F, R448A, R449A, R452A, R513A	

Dimensions

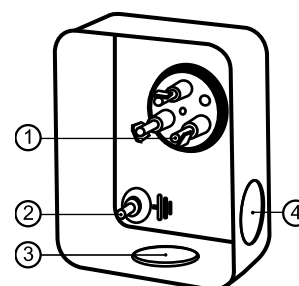


D=224 mm
H=356 mm
H1=263 mm
H2=68 mm
H3= mm

Electrical Characteristics

Nominal voltage	220-240V/1/50Hz
Voltage range	220-240 V
Winding resistance (main / start) at 25°C	0.8 Ω / 4.22 Ω
Run capacitors A + C	25 µF + 10 µF
Start capacitor B	135 µF
Start relay	RVA-6AMKL
Maximum Continuous Current (MCC)	22 A
Locked Rotor Amps (LRA)	60 A
Motor protection	Internal overload protector

Terminal box



IP55 (with cable gland)

- 1: Spade connectors 1/4"
- 2: Earth M4-12
- 3: Knock-out Ø 21 mm (0.83")
- 4: Hole Ø 21 mm (0.83")

Recommended Installation torques

Oil sight glass	50 Nm
Power connections / Earth connection	2 Nm / 2 Nm
Mounting bolts	15 Nm

Parts shipped with compressor

Mounting kit with grommets, bolts, nuts, sleeves and washers
Suction & Discharge solder sleeves, rotolock nuts and gaskets (shipped with rotolock version only)
Initial oil charge
Installation instructions

Approvals : CE certified, -, CCC certified

*Singlepack: Compressor in cardboard box

**Industrial pack: 12 Unboxed compressors on pallet (order per multiples of 12)

Rotolock accessories, suction side

Code no.

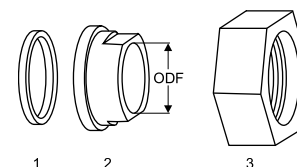
Solder sleeve, P09 (1-1/4" Rotolock, 5/8" ODF)	8153011
Rotolock valve, V09 (1-1/4" Rotolock, 5/8" ODF)	8168033
Gasket, 1-1/4"	8156131

Gaskets, sleeves and nuts

Rotolock accessories, discharge side

Code no.

Solder sleeve, P06 (1" Rotolock, 1/2" ODF)	8153007
Rotolock valve, V06 (1" Rotolock, 1/2" ODF)	8168031
Gasket, 1"	8156130



- 1: Gasket
2: Solder sleeve
3: Rotolock nut

Rotolock accessories, sets

Code no.

Valve set, V09 (1-1/4"~5/8"), V06 (1"~1/2")	7703005
Gasket set, 1", 1-1/4", 1-3/4", OSG gaskets black & white	8156009

Oil / lubricants

Code no.

POE lubricant, 175PZ, 1 litre can	120Z0638
POE lubricant, 175PZ, 2.5 litre can	120Z0639

Crankcase heaters

Code no.

PTC heater 27W, CE mark, UL	120Z0459
Belt type crankcase heater, 54 W, 230 V, CE mark, UL	7773106

Miscellaneous accessories

Code no.

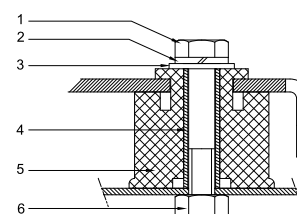
PSC starting kit, 25 µF, 10 µF	7701024
CSR starting kit, 25 µF, 10 µF, 140 µF	7701023
CSR starting kit, prewired box, 25 µF, 10 µF, 140 µF	7701029
Acoustic hood for 1 cylinder compressor	120Z0575
Oil equalisation nut	8153127

Spare parts

Code no.

Mounting kit for 1 and 2 cylinder compressor, including 3 grommets, 3 bolts	8156001
Oil sight glass with gaskets (black & white)	8156019
Gasket for oil sight glass (black chloroprene)	8156145
Service kit for terminal box 80 x 96 mm, including 1 cover, 1 clamp	8156134

Mounting kit



- 1: Bolt (3x)
2: Lock washer (3x)
3: Flat washer (3x)
4: Sleeve (3x)
5: Grommet (3x)
6: Nut (3x)

Datasheet, performance data

Maneurop reciprocating compressor. MTZ036-5

Performance data at 50 Hz, EN 12900 rating conditions

R407C

Cond. temp. in °C (tc)	Evaporating temperature in °C (to)							
	-15	-10	-5	0	5	10	15	

Cooling capacity in W

35	3 538	4 766	6 211	7 896	9 844	12 078	14 619	-	-
40	3 157	4 326	5 692	7 278	9 106	11 200	13 582	-	-
45	2 762	3 876	5 167	6 658	8 371	10 329	12 556	-	-
50	-	3 411	4 631	6 031	7 633	9 461	11 536	-	-
55	-	-	4 082	5 395	6 890	8 591	10 519	-	-
60	-	-	-	4 744	6 137	7 715	9 500	-	-
65	-	-	-	4 076	5 370	6 829	8 476	-	-

Power input in W

35	1 700	1 920	2 105	2 258	2 379	2 469	2 530	-	-
40	1 734	1 991	2 212	2 396	2 545	2 660	2 742	-	-
45	1 756	2 057	2 318	2 539	2 722	2 868	2 978	-	-
50	-	2 113	2 420	2 685	2 908	3 091	3 234	-	-
55	-	-	2 516	2 830	3 099	3 325	3 508	-	-
60	-	-	-	2 971	3 292	3 567	3 795	-	-
65	-	-	-	3 104	3 483	3 813	4 093	-	-

Current consumption in A

35	8.39	9.13	9.88	10.55	11.08	11.39	11.40	-	-
40	8.39	9.32	10.24	11.08	11.76	12.22	12.36	-	-
45	8.52	9.63	10.73	11.74	12.58	13.18	13.47	-	-
50	-	10.03	11.31	12.49	13.50	14.25	14.67	-	-
55	-	-	11.93	13.29	14.46	15.36	15.93	-	-
60	-	-	-	14.09	15.42	16.48	17.20	-	-
65	-	-	-	14.84	16.35	17.57	18.43	-	-

Mass flow in kg/h

35	77	102	130	163	200	243	290	-	-
40	72	97	125	158	194	235	282	-	-
45	67	92	120	152	188	228	273	-	-
50	-	86	114	146	181	221	265	-	-
55	-	-	107	139	174	213	256	-	-
60	-	-	-	131	166	204	247	-	-
65	-	-	-	121	156	195	237	-	-

Coefficient of performance (C.O.P.)

35	2.08	2.48	2.95	3.50	4.14	4.89	5.78	-	-
40	1.82	2.17	2.57	3.04	3.58	4.21	4.95	-	-
45	1.57	1.88	2.23	2.62	3.08	3.60	4.22	-	-
50	-	1.61	1.91	2.25	2.62	3.06	3.57	-	-
55	-	-	1.62	1.91	2.22	2.58	3.00	-	-
60	-	-	-	1.60	1.86	2.16	2.50	-	-
65	-	-	-	1.31	1.54	1.79	2.07	-	-

Nominal performance at to = 5 °C, tc = 50 °C

Cooling capacity	7 633	W
Power input	2 908	W
Current consumption	13.50	A
Mass flow	181	kg/h
C.O.P.	2.62	



to: Evaporating temperature at dew point

tc: Condensing temperature at dew point

Rating conditions : Superheat = 10 K , Subcooling = 0 K

Pressure switch settings

Maximum HP switch setting	29.4	bar(g)
Minimum LP switch setting	1.4	bar(g)
LP pump down setting	1.7	bar(g)

Sound power data

Sound power level	74	dB(A)
With acoustic hood	68	dB(A)

Tolerance according EN12900

Performance data at 50 Hz, ARI rating conditions
R407C

Cond. temp. in °C (tc)	Evaporating temperature in °C (to)							
	-15	-10	-5	0	5	10	15	

Cooling capacity in W

35	3 808	5 124	6 669	8 469	10 547	12 926	15 631	-	-
40	3 417	4 675	6 144	7 845	9 805	12 045	14 591	-	-
45	3 008	4 215	5 610	7 219	9 064	11 171	13 562	-	-
50	-	3 737	5 065	6 585	8 322	10 299	12 541	-	-
55	-	-	4 502	5 939	7 572	9 425	11 523	-	-
60	-	-	-	5 277	6 812	8 547	10 506	-	-
65	-	-	-	4 593	6 037	7 660	9 486	-	-

Power input in W

35	1 700	1 920	2 105	2 258	2 379	2 469	2 530	-	-
40	1 734	1 991	2 212	2 396	2 545	2 660	2 742	-	-
45	1 756	2 057	2 318	2 539	2 722	2 868	2 978	-	-
50	-	2 113	2 420	2 685	2 908	3 091	3 234	-	-
55	-	-	2 516	2 830	3 099	3 325	3 508	-	-
60	-	-	-	2 971	3 292	3 567	3 795	-	-
65	-	-	-	3 104	3 483	3 813	4 093	-	-

Current consumption in A

35	8.39	9.13	9.88	10.55	11.08	11.39	11.40	-	-
40	8.39	9.32	10.24	11.08	11.76	12.22	12.36	-	-
45	8.52	9.63	10.73	11.74	12.58	13.18	13.47	-	-
50	-	10.03	11.31	12.49	13.50	14.25	14.67	-	-
55	-	-	11.93	13.29	14.46	15.36	15.93	-	-
60	-	-	-	14.09	15.42	16.48	17.20	-	-
65	-	-	-	14.84	16.35	17.57	18.43	-	-

Mass flow in kg/h

35	76	101	130	162	199	241	288	-	-
40	72	96	125	157	193	234	280	-	-
45	66	91	119	151	187	227	272	-	-
50	-	85	113	145	180	220	263	-	-
55	-	-	106	138	173	212	255	-	-
60	-	-	-	130	165	203	246	-	-
65	-	-	-	121	155	194	236	-	-

Coefficient of performance (C.O.P.)

35	2.24	2.67	3.17	3.75	4.43	5.23	6.18	-	-
40	1.97	2.35	2.78	3.27	3.85	4.53	5.32	-	-
45	1.71	2.05	2.42	2.84	3.33	3.89	4.55	-	-
50	-	1.77	2.09	2.45	2.86	3.33	3.88	-	-
55	-	-	1.79	2.10	2.44	2.83	3.28	-	-
60	-	-	-	1.78	2.07	2.40	2.77	-	-
65	-	-	-	1.48	1.73	2.01	2.32	-	-

Nominal performance at to = 7.2 °C, tc = 54.4 °C

Cooling capacity	8 456	W
Power input	3 178	W
Current consumption	14.77	A
Mass flow	190	kg/h
C.O.P.	2.66	

to: Evaporating temperature at dew point

tc: Condensing temperature at dew point

Rating conditions : Superheat = 11.1 K , Subcooling = 8.3 K

Pressure switch settings

Maximum HP switch setting	29.4	bar(g)
Minimum LP switch setting	1.4	bar(g)
LP pump down setting	1.7	bar(g)

Sound power data

Sound power level	74	dB(A)
With acoustic hood	68	dB(A)

Tolerance according EN12900

Performance data at 50 Hz, EN 12900 rating conditions
R134a

Cond. temp. in °C (tc)	Evaporating temperature in °C (to)								
	-25	-20	-10	-5	0	5	10	15	20

Cooling capacity in W

35	1 238	1 773	3 226	4 178	5 304	6 623	8 152	9 907	11 908
40	1 091	1 609	2 997	3 904	4 975	6 228	7 682	9 354	11 262
45	939	1 435	2 753	3 609	4 621	5 806	7 182	8 766	10 577
50	786	1 258	2 497	3 300	4 249	5 362	6 656	8 148	9 858
55	-	-	2 235	2 981	3 863	4 900	6 108	7 506	9 111
60	-	-	-	2 656	3 468	4 425	5 544	6 843	8 340
65	-	-	-	-	3 070	3 943	4 969	6 165	7 550
75	-	-	-	-	-	-	3 804	4 784	5 934

Power input in W

35	958	1 102	1 382	1 508	1 618	1 706	1 767	1 797	1 789
40	999	1 149	1 449	1 589	1 716	1 824	1 907	1 962	1 982
45	1 027	1 184	1 508	1 664	1 810	1 939	2 047	2 129	2 180
50	1 040	1 207	1 559	1 733	1 899	2 052	2 186	2 297	2 379
55	-	-	1 600	1 793	1 982	2 160	2 322	2 464	2 580
60	-	-	-	1 845	2 058	2 263	2 455	2 629	2 780
65	-	-	-	-	2 125	2 359	2 583	2 792	2 980
75	-	-	-	-	-	-	2 821	3 104	3 372

Current consumption in A

35	7.46	7.78	8.41	8.69	8.94	9.15	9.30	9.39	9.41
40	7.51	7.86	8.56	8.89	9.20	9.48	9.71	9.89	10.00
45	7.53	7.91	8.69	9.08	9.46	9.81	10.13	10.41	10.63
50	7.53	7.94	8.82	9.28	9.72	10.16	10.57	10.95	11.28
55	-	-	8.94	9.46	9.99	10.51	11.02	11.50	11.95
60	-	-	-	9.64	10.25	10.87	11.48	12.08	12.65
65	-	-	-	-	10.52	11.23	11.95	12.67	13.37
75	-	-	-	-	-	-	12.91	13.88	14.86

Mass flow in kg/h

35	31	44	77	97	121	148	178	213	252
40	29	42	75	95	119	146	176	211	249
45	27	40	73	93	116	143	173	207	246
50	24	37	70	90	113	140	169	203	241
55	-	-	67	87	109	135	165	198	235
60	-	-	-	82	105	130	159	192	228
65	-	-	-	-	100	125	153	185	220
75	-	-	-	-	-	-	138	168	202

Coefficient of performance (C.O.P.)

35	1.29	1.61	2.33	2.77	3.28	3.88	4.61	5.51	6.66
40	1.09	1.40	2.07	2.46	2.90	3.42	4.03	4.77	5.68
45	0.91	1.21	1.83	2.17	2.55	2.99	3.51	4.12	4.85
50	0.76	1.04	1.60	1.90	2.24	2.61	3.04	3.55	4.14
55	-	-	1.40	1.66	1.95	2.27	2.63	3.05	3.53
60	-	-	-	1.44	1.69	1.96	2.26	2.60	3.00
65	-	-	-	-	1.44	1.67	1.92	2.21	2.53
75	-	-	-	-	-	-	1.35	1.54	1.76

Nominal performance at to = 5 °C, tc = 50 °C

Cooling capacity	5 362	W
Power input	2 052	W
Current consumption	10.16	A
Mass flow	140	kg/h
C.O.P.	2.61	

Pressure switch settings

Maximum HP switch setting	20.2	bar(g)
Minimum LP switch setting	0.1	bar(g)
LP pump down setting	0.4	bar(g)

Sound power data

Sound power level	0	dB(A)
With accoustic hood	0	dB(A)

to: Evaporating temperature at dew point

tc: Condensing temperature at dew point

Rating conditions : Superheat = 10 K , Subcooling = 0 K

Tolerance according EN12900

Danfoss can accept no responsibility for possible errors in catalogues, brochures and other printed material. Danfoss reserves the right to alter its products without notice.
This also applies to products already on order provided that such alternations can be made without subsequential changes being necessary in specifications already agreed.
All trademarks in this material are property of the respective companies. Danfoss, the Danfoss logotype and Maneurop are trademarks of Danfoss A/S. All rights reserved.

Performance data at 50 Hz, ARI rating conditions
R134a

Cond. temp. in °C (tc)	Evaporating temperature in °C (to)								
	-25	-20	-10	-5	0	5	10	15	20

Cooling capacity in W

35	1 346	1 924	3 488	4 510	5 717	7 128	8 760	10 633	12 763
40	1 193	1 755	3 258	4 235	5 388	6 735	8 294	10 083	12 122
45	1 033	1 576	3 010	3 939	5 033	6 312	7 794	9 497	11 440
50	-	1 392	2 749	3 625	4 657	5 865	7 265	8 878	10 722
55	-	-	2 480	3 300	4 266	5 398	6 714	8 232	9 973
60	-	-	-	2 968	3 864	4 916	6 144	7 565	9 198
65	-	-	-	-	-	4 425	5 561	6 880	8 403
75	-	-	-	-	-	-	4 377	5 483	6 776

Power input in W

35	958	1 102	1 382	1 508	1 618	1 706	1 767	1 797	1 789
40	999	1 149	1 449	1 589	1 716	1 824	1 907	1 962	1 982
45	1 027	1 184	1 508	1 664	1 810	1 939	2 047	2 129	2 180
50	-	1 207	1 559	1 733	1 899	2 052	2 186	2 297	2 379
55	-	-	1 600	1 793	1 982	2 160	2 322	2 464	2 580
60	-	-	-	1 845	2 058	2 263	2 455	2 629	2 780
65	-	-	-	-	-	2 359	2 583	2 792	2 980
75	-	-	-	-	-	-	2 821	3 104	3 372

Current consumption in A

35	7.46	7.78	8.41	8.69	8.94	9.15	9.30	9.39	9.41
40	7.51	7.86	8.56	8.89	9.20	9.48	9.71	9.89	10.00
45	7.53	7.91	8.69	9.08	9.46	9.81	10.13	10.41	10.63
50	-	7.94	8.82	9.28	9.72	10.16	10.57	10.95	11.28
55	-	-	8.94	9.46	9.99	10.51	11.02	11.50	11.95
60	-	-	-	9.64	10.25	10.87	11.48	12.08	12.65
65	-	-	-	-	-	11.23	11.95	12.67	13.37
75	-	-	-	-	-	-	12.91	13.88	14.86

Mass flow in kg/h

35	31	44	76	97	120	147	177	212	251
40	29	42	75	95	118	145	175	210	248
45	27	40	72	93	116	142	172	206	244
50	-	37	70	90	113	139	168	202	239
55	-	-	66	86	109	135	164	197	234
60	-	-	-	82	104	130	158	191	227
65	-	-	-	-	-	124	152	184	219
75	-	-	-	-	-	-	137	167	200

Coefficient of performance (C.O.P.)

35	1.40	1.75	2.52	2.99	3.53	4.18	4.96	5.92	7.14
40	1.19	1.53	2.25	2.67	3.14	3.69	4.35	5.14	6.11
45	1.01	1.33	2.00	2.37	2.78	3.25	3.81	4.46	5.25
50	-	1.15	1.76	2.09	2.45	2.86	3.32	3.87	4.51
55	-	-	1.55	1.84	2.15	2.50	2.89	3.34	3.87
60	-	-	-	1.61	1.88	2.17	2.50	2.88	3.31
65	-	-	-	-	-	1.88	2.15	2.46	2.82
75	-	-	-	-	-	-	1.55	1.77	2.01

Nominal performance at to = 7.2 °C, tc = 54.4 °C

Cooling capacity	6 014	W
Power input	2 219	W
Current consumption	10.69	A
Mass flow	148	kg/h
C.O.P.	2.71	

Pressure switch settings

Maximum HP switch setting	20.2	bar(g)
Minimum LP switch setting	0.1	bar(g)
LP pump down setting	0.4	bar(g)

Sound power data

Sound power level	0	dB(A)
With accoustic hood	0	dB(A)

to: Evaporating temperature at dew point

tc: Condensing temperature at dew point

Rating conditions : Superheat = 11.1 K , Subcooling = 8.3 K

Tolerance according EN12900

Danfoss can accept no responsibility for possible errors in catalogues, brochures and other printed material. Danfoss reserves the right to alter its products without notice.
This also applies to products already on order provided that such alternations can be made without subsequential changes being necessary in specifications already agreed.
All trademarks in this material are property of the respective companies. Danfoss, the Danfoss logotype and Maneurop are trademarks of Danfoss A/S. All rights reserved.

Datasheet, performance data

Maneurop reciprocating compressor. MTZ036-5

Performance data at 50 Hz, EN 12900 rating conditions

R404A

Cond. temp. in °C (tc)	Evaporating temperature in °C (to)								
	-30	-25	-20	-15	-10	-5	0	5	10

Cooling capacity in W

30	2 064	2 857	3 827	4 996	6 384	8 013	9 904	12 078	14 557
35	1 809	2 550	3 451	4 533	5 817	7 324	9 076	11 093	13 398
40	1 554	2 243	3 073	4 067	5 245	6 630	8 241	10 101	12 230
45	1 300	1 934	2 693	3 598	4 670	5 930	7 400	9 101	11 054
50	1 046	1 624	2 311	3 125	4 089	5 225	6 552	8 093	9 868
55	-	1 313	1 926	2 649	3 504	4 513	5 697	7 077	8 674
60	-	1 001	1 538	2 169	2 914	3 796	4 835	6 052	7 469

Power input in W

30	1 473	1 685	1 882	2 060	2 216	2 346	2 446	2 512	2 541
35	1 495	1 730	1 953	2 159	2 344	2 506	2 640	2 743	2 811
40	1 504	1 764	2 013	2 248	2 465	2 660	2 830	2 970	3 078
45	1 498	1 784	2 061	2 327	2 576	2 806	3 013	3 192	3 340
50	1 476	1 789	2 096	2 393	2 677	2 942	3 187	3 407	3 598
55	-	1 778	2 116	2 446	2 764	3 068	3 352	3 613	3 848
60	-	1 748	2 119	2 483	2 838	3 180	3 505	3 809	4 089

Current consumption in A

30	10.89	11.59	12.37	13.18	13.94	14.62	15.16	15.49	15.57
35	11.00	11.76	12.60	13.48	14.32	15.08	15.71	16.14	16.33
40	11.07	11.92	12.86	13.83	14.78	15.66	16.40	16.96	17.27
45	11.08	12.05	13.10	14.20	15.29	16.30	17.19	17.90	18.37
50	10.98	12.09	13.29	14.55	15.79	16.97	18.03	18.92	19.58
55	-	12.01	13.39	14.83	16.26	17.63	18.90	19.99	20.87
60	-	11.77	13.35	15.00	16.65	18.25	19.74	21.07	22.18

Mass flow in kg/h

30	65	88	115	146	182	223	270	324	384
35	61	84	111	142	177	217	263	315	374
40	57	80	106	137	171	211	256	307	364
45	52	75	101	131	166	204	248	298	353
50	47	70	96	125	159	197	240	288	342
55	-	64	90	119	152	189	231	278	331
60	-	57	82	111	144	180	221	267	319

Coefficient of performance (C.O.P.)

30	1.40	1.70	2.03	2.42	2.88	3.42	4.05	4.81	5.73
35	1.21	1.47	1.77	2.10	2.48	2.92	3.44	4.04	4.77
40	1.03	1.27	1.53	1.81	2.13	2.49	2.91	3.40	3.97
45	0.87	1.08	1.31	1.55	1.81	2.11	2.46	2.85	3.31
50	0.71	0.91	1.10	1.31	1.53	1.78	2.06	2.38	2.74
55	-	0.74	0.91	1.08	1.27	1.47	1.70	1.96	2.25
60	-	0.57	0.73	0.87	1.03	1.19	1.38	1.59	1.83

Nominal performance at to = -10 °C, tc = 45 °C

Cooling capacity	4 670	W
Power input	2 576	W
Current consumption	15.29	A
Mass flow	166	kg/h
C.O.P.	1.81	

to: Evaporating temperature at dew point

tc: Condensing temperature at dew point

Rating conditions : Superheat = 10 K , Subcooling = 0 K

Pressure switch settings

Maximum HP switch setting	27.7	bar(g)
Minimum LP switch setting	1	bar(g)
LP pump down setting	1.3	bar(g)

Sound power data

Sound power level	70	dB(A)
With acoustic hood	64	dB(A)

Tolerance according EN12900

Performance data at 50 Hz, ARI rating conditions
R404A

Cond. temp. in °C (tc)	Evaporating temperature in °C (to)								
	-30	-25	-20	-15	-10	-5	0	5	10

Cooling capacity in W

30	2 297	3 172	4 238	5 518	7 036	8 812	10 869	13 228	15 913
35	2 035	2 860	3 859	5 054	6 469	8 124	10 044	12 249	14 763
40	1 772	2 547	3 478	4 587	5 898	7 432	9 214	11 264	13 605
45	1 507	2 231	3 093	4 116	5 323	6 736	8 378	10 273	12 441
50	1 239	1 913	2 707	3 643	4 745	6 036	7 540	9 278	11 275
55	-	1 592	2 317	3 167	4 165	5 336	6 701	8 286	10 112
60	-	1 265	1 926	2 692	3 589	4 641	5 872	7 306	8 966

Power input in W

30	1 473	1 685	1 882	2 060	2 216	2 346	2 446	2 512	2 541
35	1 495	1 730	1 953	2 159	2 344	2 506	2 640	2 743	2 811
40	1 504	1 764	2 013	2 248	2 465	2 660	2 830	2 970	3 078
45	1 498	1 784	2 061	2 327	2 576	2 806	3 013	3 192	3 340
50	1 476	1 789	2 096	2 393	2 677	2 942	3 187	3 407	3 598
55	-	1 778	2 116	2 446	2 764	3 068	3 352	3 613	3 848
60	-	1 748	2 119	2 483	2 838	3 180	3 505	3 809	4 089

Current consumption in A

30	10.89	11.59	12.37	13.18	13.94	14.62	15.16	15.49	15.57
35	11.00	11.76	12.60	13.48	14.32	15.08	15.71	16.14	16.33
40	11.07	11.92	12.86	13.83	14.78	15.66	16.40	16.96	17.27
45	11.08	12.05	13.10	14.20	15.29	16.30	17.19	17.90	18.37
50	10.98	12.09	13.29	14.55	15.79	16.97	18.03	18.92	19.58
55	-	12.01	13.39	14.83	16.26	17.63	18.90	19.99	20.87
60	-	11.77	13.35	15.00	16.65	18.25	19.74	21.07	22.18

Mass flow in kg/h

30	65	87	114	145	181	222	269	321	381
35	61	84	110	141	176	216	262	313	371
40	57	80	106	136	170	210	254	305	361
45	52	75	101	131	165	203	247	296	351
50	46	69	95	125	158	196	238	286	340
55	-	63	89	118	151	188	230	276	329
60	-	56	82	111	143	179	220	266	317

Coefficient of performance (C.O.P.)

30	1.56	1.88	2.25	2.68	3.17	3.76	4.44	5.27	6.26
35	1.36	1.65	1.98	2.34	2.76	3.24	3.80	4.47	5.25
40	1.18	1.44	1.73	2.04	2.39	2.79	3.26	3.79	4.42
45	1.01	1.25	1.50	1.77	2.07	2.40	2.78	3.22	3.72
50	0.84	1.07	1.29	1.52	1.77	2.05	2.37	2.72	3.13
55	-	0.90	1.10	1.29	1.51	1.74	2.00	2.29	2.63
60	-	0.72	0.91	1.08	1.26	1.46	1.68	1.92	2.19

Nominal performance at to = -10 °C, tc = 45 °C

Cooling capacity	5 323	W
Power input	2 576	W
Current consumption	15.29	A
Mass flow	165	kg/h
C.O.P.	2.07	

Pressure switch settings

Maximum HP switch setting	27.7	bar(g)
Minimum LP switch setting	1	bar(g)
LP pump down setting	1.3	bar(g)

Sound power data

Sound power level	70	dB(A)
With acoustic hood	64	dB(A)

to: Evaporating temperature at dew point

tc: Condensing temperature at dew point

Rating conditions : Superheat = 11.1 K , Subcooling = 8.3 K

Tolerance according EN12900

Datasheet, performance data

Maneurop reciprocating compressor. MTZ036-5

Performance data at 50 Hz, EN 12900 rating conditions

R407A

Cond. temp. in °C (tc)	Evaporating temperature in °C (to)								
	-30	-25	-20	-15	-10	-5	0	5	10

Cooling capacity in W

30	1 527	2 272	3 178	4 269	5 565	7 089	8 863	10 908	13 247
35	1 315	2 028	2 890	3 923	5 149	6 590	8 267	10 204	12 421
40	1 095	1 773	2 587	3 559	4 711	6 065	7 643	9 467	11 559
45	873	1 512	2 275	3 182	4 257	5 521	6 996	8 704	10 667
50	-	1 250	1 957	2 797	3 791	4 962	6 330	7 918	9 749
55	-	-	1 641	2 409	3 319	4 392	5 651	7 116	8 811
60	-	-	-	2 024	2 846	3 818	4 963	6 302	7 858

Power input in W

30	1 165	1 395	1 610	1 808	1 982	2 129	2 244	2 323	2 362
35	1 158	1 412	1 655	1 882	2 090	2 273	2 427	2 548	2 632
40	1 137	1 416	1 687	1 946	2 187	2 407	2 602	2 767	2 897
45	1 102	1 407	1 707	1 998	2 274	2 533	2 768	2 977	3 154
50	-	1 384	1 714	2 038	2 350	2 648	2 926	3 179	3 405
55	-	-	1 707	2 065	2 415	2 752	3 073	3 373	3 648
60	-	-	-	2 079	2 467	2 846	3 211	3 558	3 883

Current consumption in A

30	8.25	8.83	9.49	10.16	10.82	11.40	11.87	12.17	12.27
35	8.32	8.92	9.60	10.32	11.03	11.69	12.24	12.64	12.85
40	8.37	9.01	9.75	10.53	11.32	12.07	12.73	13.25	13.59
45	8.37	9.07	9.88	10.76	11.65	12.51	13.30	13.97	14.46
50	-	9.06	9.97	10.95	11.97	12.97	13.91	14.74	15.41
55	-	-	9.97	11.09	12.25	13.41	14.52	15.54	16.41
60	-	-	-	11.11	12.44	13.79	15.09	16.32	17.41

Mass flow in kg/h

30	36	53	73	96	123	154	189	230	275
35	33	50	70	93	120	150	185	225	271
40	29	46	66	89	115	146	181	220	265
45	25	42	62	84	111	141	175	214	258
50	-	37	57	79	105	135	168	207	250
55	-	-	51	73	99	128	161	198	241
60	-	-	-	67	92	120	153	189	231

Coefficient of performance (C.O.P.)

30	1.31	1.63	1.97	2.36	2.81	3.33	3.95	4.70	5.61
35	1.14	1.44	1.75	2.08	2.46	2.90	3.41	4.00	4.72
40	0.96	1.25	1.53	1.83	2.15	2.52	2.94	3.42	3.99
45	0.79	1.07	1.33	1.59	1.87	2.18	2.53	2.92	3.38
50	-	0.90	1.14	1.37	1.61	1.87	2.16	2.49	2.86
55	-	-	0.96	1.17	1.37	1.60	1.84	2.11	2.42
60	-	-	-	0.97	1.15	1.34	1.55	1.77	2.02

Nominal performance at to = -10 °C, tc = 45 °C

Cooling capacity	4 257	W
Power input	2 274	W
Current consumption	11.65	A
Mass flow	111	kg/h
C.O.P.	1.87	

to: Evaporating temperature at dew point

tc: Condensing temperature at dew point

Rating conditions : Superheat = 10 K , Subcooling = 0 K

Pressure switch settings

Maximum HP switch setting	25.8	bar(g)
Minimum LP switch setting	0.9	bar(g)
LP pump down setting	1.2	bar(g)

Sound power data

Sound power level	69	dB(A)
With acoustic hood	63	dB(A)

Tolerance according EN12900

Datasheet, performance data

Maneurop reciprocating compressor. MTZ036-5

Performance data at 50 Hz, ARI rating conditions

R407A

Cond. temp. in °C (tc)	Evaporating temperature in °C (to)								
	-30	-25	-20	-15	-10	-5	0	5	10

Cooling capacity in W

30	1 651	2 453	3 428	4 597	5 986	7 615	9 509	11 691	14 182
35	1 430	2 203	3 134	4 248	5 567	7 115	8 915	10 989	13 361
40	1 200	1 939	2 824	3 878	5 125	6 588	8 290	10 253	12 502
45	964	1 667	2 502	3 493	4 664	6 039	7 639	9 489	11 611
50	-	1 391	2 173	3 098	4 190	5 472	6 968	8 701	10 694
55	-	-	1 843	2 699	3 708	4 895	6 284	7 897	9 758
60	-	-	-	2 300	3 224	4 313	5 592	7 082	8 810

Power input in W

30	1 165	1 395	1 610	1 808	1 982	2 129	2 244	2 323	2 362
35	1 158	1 412	1 655	1 882	2 090	2 273	2 427	2 548	2 632
40	1 137	1 416	1 687	1 946	2 187	2 407	2 602	2 767	2 897
45	1 102	1 407	1 707	1 998	2 274	2 533	2 768	2 977	3 154
50	-	1 384	1 714	2 038	2 350	2 648	2 926	3 179	3 405
55	-	-	1 707	2 065	2 415	2 752	3 073	3 373	3 648
60	-	-	-	2 079	2 467	2 846	3 211	3 558	3 883

Current consumption in A

30	8.25	8.83	9.49	10.16	10.82	11.40	11.87	12.17	12.27
35	8.32	8.92	9.60	10.32	11.03	11.69	12.24	12.64	12.85
40	8.37	9.01	9.75	10.53	11.32	12.07	12.73	13.25	13.59
45	8.37	9.07	9.88	10.76	11.65	12.51	13.30	13.97	14.46
50	-	9.06	9.97	10.95	11.97	12.97	13.91	14.74	15.41
55	-	-	9.97	11.09	12.25	13.41	14.52	15.54	16.41
60	-	-	-	11.11	12.44	13.79	15.09	16.32	17.41

Mass flow in kg/h

30	36	53	73	96	122	153	188	228	274
35	33	50	69	92	119	149	184	224	269
40	29	46	66	88	115	145	180	219	263
45	25	42	61	84	110	140	174	213	256
50	-	37	56	79	104	134	167	205	248
55	-	-	51	73	98	127	160	197	239
60	-	-	-	67	91	120	152	188	230

Coefficient of performance (C.O.P.)

30	1.42	1.76	2.13	2.54	3.02	3.58	4.24	5.03	6.00
35	1.24	1.56	1.89	2.26	2.66	3.13	3.67	4.31	5.08
40	1.05	1.37	1.67	1.99	2.34	2.74	3.19	3.71	4.32
45	0.87	1.18	1.47	1.75	2.05	2.38	2.76	3.19	3.68
50	-	1.01	1.27	1.52	1.78	2.07	2.38	2.74	3.14
55	-	-	1.08	1.31	1.54	1.78	2.04	2.34	2.67
60	-	-	-	1.11	1.31	1.52	1.74	1.99	2.27

Nominal performance at to = -10 °C, tc = 45 °C

Cooling capacity	4 664	W
Power input	2 274	W
Current consumption	11.65	A
Mass flow	110	kg/h
C.O.P.	2.05	

to: Evaporating temperature at dew point

tc: Condensing temperature at dew point

Rating conditions : Superheat = 11.1 K , Subcooling = 8.3 K

Pressure switch settings

Maximum HP switch setting	25.8	bar(g)
Minimum LP switch setting	0.9	bar(g)
LP pump down setting	1.2	bar(g)

Sound power data

Sound power level	69	dB(A)
With acoustic hood	63	dB(A)

Tolerance according EN12900

Datasheet, performance data

Maneurop reciprocating compressor. MTZ036-5

Performance data at 50 Hz, EN 12900 rating conditions

R407F

Cond. temp. in °C (tc)	Evaporating temperature in °C (to)								
	-30	-25	-20	-15	-10	-5	0	5	10

Cooling capacity in W

30	-	2 466	3 489	4 723	6 193	7 926	9 947	12 281	14 955
35	-	2 139	3 079	4 207	5 551	7 135	8 985	11 127	13 588
40	-	1 857	2 728	3 767	4 999	6 449	8 144	10 109	12 370
45	-	1 607	2 425	3 389	4 524	5 855	7 410	9 213	11 290
50	-	-	2 157	3 061	4 114	5 342	6 771	8 427	10 335
55	-	-	-	2 770	3 756	4 896	6 215	7 738	9 493
60	-	-	-	-	-	-	-	-	-

Power input in W

30	-	1 476	1 701	1 910	2 092	2 235	2 329	2 362	2 324
35	-	1 499	1 747	1 987	2 207	2 397	2 545	2 641	2 672
40	-	1 521	1 788	2 055	2 310	2 542	2 740	2 893	2 990
45	-	1 551	1 833	2 122	2 407	2 677	2 921	3 128	3 286
50	-	-	1 890	2 197	2 508	2 812	3 097	3 353	3 568
55	-	-	-	2 288	2 621	2 954	3 276	3 576	3 844
60	-	-	-	-	-	-	-	-	-

Current consumption in A

30	-	8.85	9.55	10.28	10.98	11.58	12.04	12.29	12.26
35	-	9.05	9.77	10.54	11.30	11.99	12.55	12.91	13.02
40	-	9.17	9.94	10.78	11.63	12.42	13.10	13.61	13.88
45	-	9.25	10.09	11.02	11.97	12.89	13.72	14.40	14.85
50	-	-	10.23	11.27	12.35	13.43	14.43	15.29	15.96
55	-	-	-	11.54	12.79	14.04	15.23	16.30	17.20
60	-	-	-	-	-	-	-	-	-

Mass flow in kg/h

30	-	51	71	95	122	155	192	234	282
35	-	46	66	88	115	146	181	221	267
40	-	42	61	83	109	138	172	210	254
45	-	39	58	79	104	132	165	202	244
50	-	-	54	76	100	128	159	195	236
55	-	-	-	73	97	125	156	190	230
60	-	-	-	-	-	-	-	-	-

Coefficient of performance (C.O.P.)

30	-	1.67	2.05	2.47	2.96	3.55	4.27	5.20	6.43
35	-	1.43	1.76	2.12	2.51	2.98	3.53	4.21	5.08
40	-	1.22	1.53	1.83	2.16	2.54	2.97	3.49	4.14
45	-	1.04	1.32	1.60	1.88	2.19	2.54	2.95	3.44
50	-	-	1.14	1.39	1.64	1.90	2.19	2.51	2.90
55	-	-	-	1.21	1.43	1.66	1.90	2.16	2.47
60	-	-	-	-	-	-	-	-	-

Nominal performance at to = -10 °C, tc = 45 °C

Cooling capacity	4 524	W
Power input	2 407	W
Current consumption	11.97	A
Mass flow	104	kg/h
C.O.P.	1.88	

to: Evaporating temperature at dew point

tc: Condensing temperature at dew point

Rating conditions : Superheat = 10 K , Subcooling = 0 K

Pressure switch settings

Maximum HP switch setting	24	bar(g)
Minimum LP switch setting	1	bar(g)
LP pump down setting	1.26	bar(g)

Sound power data

Sound power level	69	dB(A)
With acoustic hood	63	dB(A)

Tolerance according EN12900

Datasheet, performance data

Maneurop reciprocating compressor. MTZ036-5

Performance data at 50 Hz, ARI rating conditions

R407F

Cond. temp. in °C (tc)	Evaporating temperature in °C (to)								
	-30	-25	-20	-15	-10	-5	0	5	10

Cooling capacity in W

30	-	2 643	3 736	5 052	6 618	8 461	10 609	13 088	15 924
35	-	2 303	3 311	4 520	5 957	7 649	9 624	11 907	14 526
40	-	2 010	2 950	4 068	5 391	6 948	8 764	10 868	13 286
45	-	1 751	2 639	3 682	4 908	6 345	8 020	9 960	12 192
50	-	-	2 365	3 350	4 496	5 829	7 379	9 171	11 234
55	-	-	-	3 061	4 143	5 390	6 831	8 493	10 404
60	-	-	-	-	-	-	-	-	-

Power input in W

30	-	1 476	1 701	1 910	2 092	2 235	2 329	2 362	2 324
35	-	1 499	1 747	1 987	2 207	2 397	2 545	2 641	2 672
40	-	1 521	1 788	2 055	2 310	2 542	2 740	2 893	2 990
45	-	1 551	1 833	2 122	2 407	2 677	2 921	3 128	3 286
50	-	-	1 890	2 197	2 508	2 812	3 097	3 353	3 568
55	-	-	-	2 288	2 621	2 954	3 276	3 576	3 844
60	-	-	-	-	-	-	-	-	-

Current consumption in A

30	-	8.85	9.55	10.28	10.98	11.58	12.04	12.29	12.26
35	-	9.05	9.77	10.54	11.30	11.99	12.55	12.91	13.02
40	-	9.17	9.94	10.78	11.63	12.42	13.10	13.61	13.88
45	-	9.25	10.09	11.02	11.97	12.89	13.72	14.40	14.85
50	-	-	10.23	11.27	12.35	13.43	14.43	15.29	15.96
55	-	-	-	11.54	12.79	14.04	15.23	16.30	17.20
60	-	-	-	-	-	-	-	-	-

Mass flow in kg/h

30	-	51	71	94	122	154	190	232	280
35	-	46	65	88	114	145	180	220	265
40	-	42	61	83	108	137	171	209	253
45	-	39	57	79	103	131	164	201	242
50	-	-	54	75	99	127	158	194	234
55	-	-	-	73	97	124	155	189	228
60	-	-	-	-	-	-	-	-	-

Coefficient of performance (C.O.P.)

30	-	1.79	2.20	2.64	3.16	3.79	4.56	5.54	6.85
35	-	1.54	1.90	2.28	2.70	3.19	3.78	4.51	5.44
40	-	1.32	1.65	1.98	2.33	2.73	3.20	3.76	4.44
45	-	1.13	1.44	1.73	2.04	2.37	2.75	3.18	3.71
50	-	-	1.25	1.52	1.79	2.07	2.38	2.74	3.15
55	-	-	-	1.34	1.58	1.82	2.09	2.37	2.71
60	-	-	-	-	-	-	-	-	-

Nominal performance at to = -10 °C, tc = 45 °C

Cooling capacity	4 908	W
Power input	2 407	W
Current consumption	11.97	A
Mass flow	103	kg/h
C.O.P.	2.04	

to: Evaporating temperature at dew point

tc: Condensing temperature at dew point

Rating conditions : Superheat = 11.1 K , Subcooling = 8.3 K

Pressure switch settings

Maximum HP switch setting	24	bar(g)
Minimum LP switch setting	1	bar(g)
LP pump down setting	1.26	bar(g)

Sound power data

Sound power level	69	dB(A)
With acoustic hood	63	dB(A)

Tolerance according EN12900

Performance data at 50 Hz, EN 12900 rating conditions
R134a

Cond. temp. in °C (tc)	Evaporating temperature in °C (to)								
	-25	-20	-10	-5	0	5	10	15	20

Cooling capacity in W

35	1 238	1 773	3 226	4 178	5 304	6 623	8 152	9 907	11 908
40	1 091	1 609	2 997	3 904	4 975	6 228	7 682	9 354	11 262
45	939	1 435	2 753	3 609	4 621	5 806	7 182	8 766	10 577
50	786	1 258	2 497	3 300	4 249	5 362	6 656	8 148	9 858
55	-	-	2 235	2 981	3 863	4 900	6 108	7 506	9 111
60	-	-	-	2 656	3 468	4 425	5 544	6 843	8 340
65	-	-	-	-	3 070	3 943	4 969	6 165	7 550
75	-	-	-	-	-	-	3 804	4 784	5 934

Power input in W

35	958	1 102	1 382	1 508	1 618	1 706	1 767	1 797	1 789
40	999	1 149	1 449	1 589	1 716	1 824	1 907	1 962	1 982
45	1 027	1 184	1 508	1 664	1 810	1 939	2 047	2 129	2 180
50	1 040	1 207	1 559	1 733	1 899	2 052	2 186	2 297	2 379
55	-	-	1 600	1 793	1 982	2 160	2 322	2 464	2 580
60	-	-	-	1 845	2 058	2 263	2 455	2 629	2 780
65	-	-	-	-	2 125	2 359	2 583	2 792	2 980
75	-	-	-	-	-	-	2 821	3 104	3 372

Current consumption in A

35	7.46	7.78	8.41	8.69	8.94	9.15	9.30	9.39	9.41
40	7.51	7.86	8.56	8.89	9.20	9.48	9.71	9.89	10.00
45	7.53	7.91	8.69	9.08	9.46	9.81	10.13	10.41	10.63
50	7.53	7.94	8.82	9.28	9.72	10.16	10.57	10.95	11.28
55	-	-	8.94	9.46	9.99	10.51	11.02	11.50	11.95
60	-	-	-	9.64	10.25	10.87	11.48	12.08	12.65
65	-	-	-	-	10.52	11.23	11.95	12.67	13.37
75	-	-	-	-	-	-	12.91	13.88	14.86

Mass flow in kg/h

35	31	44	77	97	121	148	178	213	252
40	29	42	75	95	119	146	176	211	249
45	27	40	73	93	116	143	173	207	246
50	24	37	70	90	113	140	169	203	241
55	-	-	67	87	109	135	165	198	235
60	-	-	-	82	105	130	159	192	228
65	-	-	-	-	100	125	153	185	220
75	-	-	-	-	-	-	138	168	202

Coefficient of performance (C.O.P.)

35	1.29	1.61	2.33	2.77	3.28	3.88	4.61	5.51	6.66
40	1.09	1.40	2.07	2.46	2.90	3.42	4.03	4.77	5.68
45	0.91	1.21	1.83	2.17	2.55	2.99	3.51	4.12	4.85
50	0.76	1.04	1.60	1.90	2.24	2.61	3.04	3.55	4.14
55	-	-	1.40	1.66	1.95	2.27	2.63	3.05	3.53
60	-	-	-	1.44	1.69	1.96	2.26	2.60	3.00
65	-	-	-	-	1.44	1.67	1.92	2.21	2.53
75	-	-	-	-	-	-	1.35	1.54	1.76

Nominal performance at to = 5 °C, tc = 50 °C

Cooling capacity	5 362	W
Power input	2 052	W
Current consumption	10.16	A
Mass flow	140	kg/h
C.O.P.	2.61	

Pressure switch settings

Maximum HP switch setting	20.2	bar(g)
Minimum LP switch setting	0.1	bar(g)
LP pump down setting	0.4	bar(g)

Sound power data

Sound power level	0	dB(A)
With accoustic hood	0	dB(A)

to: Evaporating temperature at dew point

tc: Condensing temperature at dew point

Rating conditions : Superheat = 10 K , Subcooling = 0 K

Tolerance according EN12900

Danfoss can accept no responsibility for possible errors in catalogues, brochures and other printed material. Danfoss reserves the right to alter its products without notice.
This also applies to products already on order provided that such alternations can be made without subsequential changes being necessary in specifications already agreed.
All trademarks in this material are property of the respective companies. Danfoss, the Danfoss logotype and Maneurop are trademarks of Danfoss A/S. All rights reserved.

Performance data at 50 Hz, ARI rating conditions
R134a

Cond. temp. in °C (tc)	Evaporating temperature in °C (to)								
	-25	-20	-10	-5	0	5	10	15	20

Cooling capacity in W

35	1 346	1 924	3 488	4 510	5 717	7 128	8 760	10 633	12 763
40	1 193	1 755	3 258	4 235	5 388	6 735	8 294	10 083	12 122
45	1 033	1 576	3 010	3 939	5 033	6 312	7 794	9 497	11 440
50	-	1 392	2 749	3 625	4 657	5 865	7 265	8 878	10 722
55	-	-	2 480	3 300	4 266	5 398	6 714	8 232	9 973
60	-	-	-	2 968	3 864	4 916	6 144	7 565	9 198
65	-	-	-	-	-	4 425	5 561	6 880	8 403
75	-	-	-	-	-	-	4 377	5 483	6 776

Power input in W

35	958	1 102	1 382	1 508	1 618	1 706	1 767	1 797	1 789
40	999	1 149	1 449	1 589	1 716	1 824	1 907	1 962	1 982
45	1 027	1 184	1 508	1 664	1 810	1 939	2 047	2 129	2 180
50	-	1 207	1 559	1 733	1 899	2 052	2 186	2 297	2 379
55	-	-	1 600	1 793	1 982	2 160	2 322	2 464	2 580
60	-	-	-	1 845	2 058	2 263	2 455	2 629	2 780
65	-	-	-	-	-	2 359	2 583	2 792	2 980
75	-	-	-	-	-	-	2 821	3 104	3 372

Current consumption in A

35	7.46	7.78	8.41	8.69	8.94	9.15	9.30	9.39	9.41
40	7.51	7.86	8.56	8.89	9.20	9.48	9.71	9.89	10.00
45	7.53	7.91	8.69	9.08	9.46	9.81	10.13	10.41	10.63
50	-	7.94	8.82	9.28	9.72	10.16	10.57	10.95	11.28
55	-	-	8.94	9.46	9.99	10.51	11.02	11.50	11.95
60	-	-	-	9.64	10.25	10.87	11.48	12.08	12.65
65	-	-	-	-	-	11.23	11.95	12.67	13.37
75	-	-	-	-	-	-	12.91	13.88	14.86

Mass flow in kg/h

35	31	44	76	97	120	147	177	212	251
40	29	42	75	95	118	145	175	210	248
45	27	40	72	93	116	142	172	206	244
50	-	37	70	90	113	139	168	202	239
55	-	-	66	86	109	135	164	197	234
60	-	-	-	82	104	130	158	191	227
65	-	-	-	-	-	124	152	184	219
75	-	-	-	-	-	-	137	167	200

Coefficient of performance (C.O.P.)

35	1.40	1.75	2.52	2.99	3.53	4.18	4.96	5.92	7.14
40	1.19	1.53	2.25	2.67	3.14	3.69	4.35	5.14	6.11
45	1.01	1.33	2.00	2.37	2.78	3.25	3.81	4.46	5.25
50	-	1.15	1.76	2.09	2.45	2.86	3.32	3.87	4.51
55	-	-	1.55	1.84	2.15	2.50	2.89	3.34	3.87
60	-	-	-	1.61	1.88	2.17	2.50	2.88	3.31
65	-	-	-	-	-	1.88	2.15	2.46	2.82
75	-	-	-	-	-	-	1.55	1.77	2.01

Nominal performance at to = 7.2 °C, tc = 54.4 °C

Cooling capacity	6 014	W
Power input	2 219	W
Current consumption	10.69	A
Mass flow	148	kg/h
C.O.P.	2.71	

Pressure switch settings

Maximum HP switch setting	20.2	bar(g)
Minimum LP switch setting	0.1	bar(g)
LP pump down setting	0.4	bar(g)

Sound power data

Sound power level	0	dB(A)
With accoustic hood	0	dB(A)

to: Evaporating temperature at dew point

tc: Condensing temperature at dew point

Rating conditions : Superheat = 11.1 K , Subcooling = 8.3 K

Tolerance according EN12900

Danfoss can accept no responsibility for possible errors in catalogues, brochures and other printed material. Danfoss reserves the right to alter its products without notice.
This also applies to products already on order provided that such alternations can be made without subsequential changes being necessary in specifications already agreed.
All trademarks in this material are property of the respective companies. Danfoss, the Danfoss logotype and Maneurop are trademarks of Danfoss A/S. All rights reserved.

Datasheet, performance data

Maneurop reciprocating compressor. MTZ036-5

Performance data at 50 Hz, EN 12900 rating conditions

R407C

Cond. temp. in °C (tc)	Evaporating temperature in °C (to)							
	-15	-10	-5	0	5	10	15	

Cooling capacity in W

35	3 538	4 766	6 211	7 896	9 844	12 078	14 619	-	-
40	3 157	4 326	5 692	7 278	9 106	11 200	13 582	-	-
45	2 762	3 876	5 167	6 658	8 371	10 329	12 556	-	-
50	-	3 411	4 631	6 031	7 633	9 461	11 536	-	-
55	-	-	4 082	5 395	6 890	8 591	10 519	-	-
60	-	-	-	4 744	6 137	7 715	9 500	-	-
65	-	-	-	4 076	5 370	6 829	8 476	-	-

Power input in W

35	1 700	1 920	2 105	2 258	2 379	2 469	2 530	-	-
40	1 734	1 991	2 212	2 396	2 545	2 660	2 742	-	-
45	1 756	2 057	2 318	2 539	2 722	2 868	2 978	-	-
50	-	2 113	2 420	2 685	2 908	3 091	3 234	-	-
55	-	-	2 516	2 830	3 099	3 325	3 508	-	-
60	-	-	-	2 971	3 292	3 567	3 795	-	-
65	-	-	-	3 104	3 483	3 813	4 093	-	-

Current consumption in A

35	8.39	9.13	9.88	10.55	11.08	11.39	11.40	-	-
40	8.39	9.32	10.24	11.08	11.76	12.22	12.36	-	-
45	8.52	9.63	10.73	11.74	12.58	13.18	13.47	-	-
50	-	10.03	11.31	12.49	13.50	14.25	14.67	-	-
55	-	-	11.93	13.29	14.46	15.36	15.93	-	-
60	-	-	-	14.09	15.42	16.48	17.20	-	-
65	-	-	-	14.84	16.35	17.57	18.43	-	-

Mass flow in kg/h

35	77	102	130	163	200	243	290	-	-
40	72	97	125	158	194	235	282	-	-
45	67	92	120	152	188	228	273	-	-
50	-	86	114	146	181	221	265	-	-
55	-	-	107	139	174	213	256	-	-
60	-	-	-	131	166	204	247	-	-
65	-	-	-	121	156	195	237	-	-

Coefficient of performance (C.O.P.)

35	2.08	2.48	2.95	3.50	4.14	4.89	5.78	-	-
40	1.82	2.17	2.57	3.04	3.58	4.21	4.95	-	-
45	1.57	1.88	2.23	2.62	3.08	3.60	4.22	-	-
50	-	1.61	1.91	2.25	2.62	3.06	3.57	-	-
55	-	-	1.62	1.91	2.22	2.58	3.00	-	-
60	-	-	-	1.60	1.86	2.16	2.50	-	-
65	-	-	-	1.31	1.54	1.79	2.07	-	-

Nominal performance at to = 5 °C, tc = 50 °C

Cooling capacity	7 633	W
Power input	2 908	W
Current consumption	13.50	A
Mass flow	181	kg/h
C.O.P.	2.62	



to: Evaporating temperature at dew point

tc: Condensing temperature at dew point

Rating conditions : Superheat = 10 K , Subcooling = 0 K

Pressure switch settings

Maximum HP switch setting	29.4	bar(g)
Minimum LP switch setting	1.4	bar(g)
LP pump down setting	1.7	bar(g)

Sound power data

Sound power level	74	dB(A)
With acoustic hood	68	dB(A)

Tolerance according EN12900

Performance data at 50 Hz, ARI rating conditions
R407C

Cond. temp. in °C (tc)	Evaporating temperature in °C (to)							
	-15	-10	-5	0	5	10	15	

Cooling capacity in W

35	3 808	5 124	6 669	8 469	10 547	12 926	15 631	-	-
40	3 417	4 675	6 144	7 845	9 805	12 045	14 591	-	-
45	3 008	4 215	5 610	7 219	9 064	11 171	13 562	-	-
50	-	3 737	5 065	6 585	8 322	10 299	12 541	-	-
55	-	-	4 502	5 939	7 572	9 425	11 523	-	-
60	-	-	-	5 277	6 812	8 547	10 506	-	-
65	-	-	-	4 593	6 037	7 660	9 486	-	-

Power input in W

35	1 700	1 920	2 105	2 258	2 379	2 469	2 530	-	-
40	1 734	1 991	2 212	2 396	2 545	2 660	2 742	-	-
45	1 756	2 057	2 318	2 539	2 722	2 868	2 978	-	-
50	-	2 113	2 420	2 685	2 908	3 091	3 234	-	-
55	-	-	2 516	2 830	3 099	3 325	3 508	-	-
60	-	-	-	2 971	3 292	3 567	3 795	-	-
65	-	-	-	3 104	3 483	3 813	4 093	-	-

Current consumption in A

35	8.39	9.13	9.88	10.55	11.08	11.39	11.40	-	-
40	8.39	9.32	10.24	11.08	11.76	12.22	12.36	-	-
45	8.52	9.63	10.73	11.74	12.58	13.18	13.47	-	-
50	-	10.03	11.31	12.49	13.50	14.25	14.67	-	-
55	-	-	11.93	13.29	14.46	15.36	15.93	-	-
60	-	-	-	14.09	15.42	16.48	17.20	-	-
65	-	-	-	14.84	16.35	17.57	18.43	-	-

Mass flow in kg/h

35	76	101	130	162	199	241	288	-	-
40	72	96	125	157	193	234	280	-	-
45	66	91	119	151	187	227	272	-	-
50	-	85	113	145	180	220	263	-	-
55	-	-	106	138	173	212	255	-	-
60	-	-	-	130	165	203	246	-	-
65	-	-	-	121	155	194	236	-	-

Coefficient of performance (C.O.P.)

35	2.24	2.67	3.17	3.75	4.43	5.23	6.18	-	-
40	1.97	2.35	2.78	3.27	3.85	4.53	5.32	-	-
45	1.71	2.05	2.42	2.84	3.33	3.89	4.55	-	-
50	-	1.77	2.09	2.45	2.86	3.33	3.88	-	-
55	-	-	1.79	2.10	2.44	2.83	3.28	-	-
60	-	-	-	1.78	2.07	2.40	2.77	-	-
65	-	-	-	1.48	1.73	2.01	2.32	-	-

Nominal performance at to = 7.2 °C, tc = 54.4 °C

Cooling capacity	8 456	W
Power input	3 178	W
Current consumption	14.77	A
Mass flow	190	kg/h
C.O.P.	2.66	

to: Evaporating temperature at dew point

tc: Condensing temperature at dew point

Rating conditions : Superheat = 11.1 K , Subcooling = 8.3 K

Pressure switch settings

Maximum HP switch setting	29.4	bar(g)
Minimum LP switch setting	1.4	bar(g)
LP pump down setting	1.7	bar(g)

Sound power data

Sound power level	74	dB(A)
With acoustic hood	68	dB(A)

Tolerance according EN12900

Datasheet, performance data

Maneurop reciprocating compressor. MTZ036-5

Performance data at 50 Hz, EN 12900 rating conditions, Suction temp. = 20 °C

R448A

Cond. temp. in °C (tc)	Evaporating temperature in °C (to)								
	-30	-25	-20	-15	-10	-5	0	5	10

Cooling capacity in W

10	-	3 184	4 124	5 254	6 594	-	-	-	-
20	-	2 846	3 744	4 811	6 065	7 527	9 218	-	-
30	-	2 431	3 279	4 273	5 432	6 774	8 321	10 094	12 122
40	-	-	2 742	3 655	4 710	5 924	7 316	8 908	10 723
50	-	-	-	2 973	3 916	4 993	6 222	7 623	9 215
60	-	-	-	-	3 064	3 997	5 056	6 257	7 616

Power input in W

10	-	1 293	1 354	1 385	1 383	-	-	-	-
20	-	1 437	1 551	1 637	1 693	1 718	1 709	-	-
30	-	1 529	1 699	1 843	1 960	2 047	2 103	2 126	2 115
40	-	-	1 790	1 995	2 175	2 327	2 451	2 545	2 606
50	-	-	-	2 087	2 332	2 552	2 747	2 913	3 050
60	-	-	-	-	2 424	2 716	2 983	3 225	3 439

Current consumption in A

10	-	4.82	5.58	6.21	6.71	-	-	-	-
20	-	6.62	7.40	8.06	8.59	8.99	9.27	-	-
30	-	7.71	8.62	9.40	10.06	10.60	11.01	11.30	11.48
40	-	-	9.27	10.28	11.16	11.93	12.57	13.10	13.51
50	-	-	-	10.74	11.94	13.03	14.01	14.86	15.61
60	-	-	-	-	12.45	13.96	15.36	16.64	17.81

Mass flow in kg/h

10	-	53	69	88	111	-	-	-	-
20	-	50	66	86	108	135	167	-	-
30	-	46	63	82	105	132	163	201	245
40	-	-	57	77	100	126	158	194	238
50	-	-	-	70	92	119	150	186	228
60	-	-	-	-	83	109	139	175	217

Coefficient of performance (C.O.P.)

10	-	2.46	3.05	3.79	4.77	-	-	-	-
20	-	1.98	2.41	2.94	3.58	4.38	5.39	-	-
30	-	1.59	1.93	2.32	2.77	3.31	3.96	4.75	5.73
40	-	-	1.53	1.83	2.17	2.55	2.98	3.50	4.11
50	-	-	-	1.43	1.68	1.96	2.27	2.62	3.02
60	-	-	-	-	1.26	1.47	1.69	1.94	2.21

Nominal performance at to = -10 °C, tc = 45 °C

Cooling capacity	4 321	W
Power input	2 261	W
Current consumption	11.59	A
Mass flow	96	kg/h
C.O.P.	1.91	

to: Evaporating temperature at dew point

tc: Condensing temperature at dew point

Rating conditions : Suction gas temp. = 20 °C , Subcooling = 0 K

Pressure switch settings

Maximum HP switch setting	27.7	bar(g)
Minimum LP switch setting	1	bar(g)
LP pump down setting	1.3	bar(g)

Sound power data

Sound power level	72	dB(A)
With accoustic hood	66	dB(A)

Tolerance according EN12900

Datasheet, performance data

Maneurop reciprocating compressor. MTZ036-5

Performance data at 50 Hz, EN 12900 rating conditions, Superheat = 10 K

R448A

Cond. temp. in °C (tc)	Evaporating temperature in °C (to)								
	-30	-25	-20	-15	-10	-5	0	5	10

Cooling capacity in W

10	2 425	3 200	4 147	5 287	6 637	-	-	-	-
20	2 079	2 828	3 729	4 801	6 064	7 535	9 235	-	-
30	1 669	2 382	3 226	4 221	5 386	6 740	8 301	10 089	12 122
40	1 214	1 880	2 658	3 566	4 623	5 848	7 261	8 879	10 723
50	-	1 341	2 042	2 852	3 791	4 878	6 132	7 571	9 215
60	-	-	1 396	2 099	2 910	3 849	4 933	6 183	7 616

Power input in W

10	1 203	1 293	1 354	1 385	1 383	-	-	-	-
20	1 297	1 437	1 551	1 637	1 693	1 718	1 709	-	-
30	1 336	1 529	1 699	1 843	1 960	2 047	2 103	2 126	2 115
40	1 313	1 562	1 790	1 995	2 175	2 327	2 451	2 545	2 606
50	-	1 530	1 819	2 087	2 332	2 552	2 747	2 913	3 050
60	-	-	1 777	2 111	2 424	2 716	2 983	3 225	3 439

Current consumption in A

10	3.93	4.82	5.58	6.21	6.71	-	-	-	-
20	5.70	6.62	7.40	8.06	8.59	8.99	9.27	-	-
30	6.67	7.71	8.62	9.40	10.06	10.60	11.01	11.30	11.48
40	6.88	8.14	9.27	10.28	11.16	11.93	12.57	13.10	13.51
50	-	7.96	9.41	10.74	11.94	13.03	14.01	14.86	15.61
60	-	-	9.08	10.82	12.45	13.96	15.36	16.64	17.81

Mass flow in kg/h

10	47	62	79	98	122	-	-	-	-
20	44	58	76	96	119	146	176	-	-
30	38	54	72	92	115	142	172	206	245
40	31	47	65	86	109	136	166	200	238
50	-	38	57	78	101	128	158	191	228
60	-	-	46	67	91	117	147	180	217

Coefficient of performance (C.O.P.)

10	2.02	2.47	3.06	3.82	4.80	-	-	-	-
20	1.60	1.97	2.40	2.93	3.58	4.39	5.40	-	-
30	1.25	1.56	1.90	2.29	2.75	3.29	3.95	4.74	5.73
40	0.92	1.20	1.48	1.79	2.13	2.51	2.96	3.49	4.11
50	-	0.88	1.12	1.37	1.63	1.91	2.23	2.60	3.02
60	-	-	0.79	0.99	1.20	1.42	1.65	1.92	2.21

Nominal performance at to = -10 °C, tc = 45 °C

Cooling capacity	4 214	W
Power input	2 261	W
Current consumption	11.59	A
Mass flow	106	kg/h
C.O.P.	1.86	

to: Evaporating temperature at dew point

tc: Condensing temperature at dew point

Rating conditions : Superheat = 10 K , Subcooling = 0 K

Pressure switch settings

Maximum HP switch setting	27.7	bar(g)
Minimum LP switch setting	1	bar(g)
LP pump down setting	1.3	bar(g)

Sound power data

Sound power level	72	dB(A)
With acoustic hood	66	dB(A)

Tolerance according EN12900

Datasheet, performance data

Maneurop reciprocating compressor. MTZ036-5

Performance data at 50 Hz, EN 12900 rating conditions, Suction temp. = 20 °C

R449A

Cond. temp. in °C (tc)	Evaporating temperature in °C (to)								
	-30	-25	-20	-15	-10	-5	0	5	10

Cooling capacity in W

10	-	3 190	4 131	5 261	6 600	-	-	-	-
20	-	2 852	3 751	4 818	6 072	7 533	9 223	-	-
30	-	2 437	3 286	4 280	5 439	6 781	8 326	10 098	12 122
40	-	-	2 750	3 663	4 718	5 931	7 322	8 912	10 723
50	-	-	-	2 981	3 923	5 000	6 228	7 627	9 215
60	-	-	-	-	3 072	4 004	5 062	6 260	7 616

Power input in W

10	-	1 293	1 354	1 385	1 383	-	-	-	-
20	-	1 437	1 551	1 637	1 694	1 718	1 709	-	-
30	-	1 529	1 699	1 843	1 960	2 047	2 103	2 126	2 115
40	-	-	1 791	1 995	2 175	2 327	2 452	2 545	2 607
50	-	-	-	2 087	2 332	2 553	2 747	2 914	3 050
60	-	-	-	-	2 425	2 716	2 983	3 225	3 440

Current consumption in A

10	-	4.83	5.58	6.21	6.71	-	-	-	-
20	-	6.62	7.40	8.06	8.59	8.99	9.27	-	-
30	-	7.71	8.62	9.40	10.06	10.60	11.01	11.30	11.48
40	-	-	9.27	10.28	11.16	11.93	12.57	13.10	13.51
50	-	-	-	10.74	11.95	13.03	14.01	14.86	15.60
60	-	-	-	-	12.45	13.96	15.36	16.64	17.81

Mass flow in kg/h

10	-	54	70	90	113	-	-	-	-
20	-	51	68	87	111	138	171	-	-
30	-	47	64	84	107	134	167	204	249
40	-	-	59	79	102	129	161	198	242
50	-	-	-	71	95	122	153	190	233
60	-	-	-	-	85	112	143	179	222

Coefficient of performance (C.O.P.)

10	-	2.47	3.05	3.80	4.77	-	-	-	-
20	-	1.98	2.42	2.94	3.59	4.39	5.40	-	-
30	-	1.59	1.93	2.32	2.78	3.31	3.96	4.75	5.73
40	-	-	1.54	1.84	2.17	2.55	2.99	3.50	4.11
50	-	-	-	1.43	1.68	1.96	2.27	2.62	3.02
60	-	-	-	-	1.27	1.47	1.70	1.94	2.21

Nominal performance at to = -10 °C, tc = 45 °C

Cooling capacity	4 329	W
Power input	2 261	W
Current consumption	11.59	A
Mass flow	98	kg/h
C.O.P.	1.91	

to: Evaporating temperature at dew point

tc: Condensing temperature at dew point

Rating conditions : Suction gas temp. = 20 °C , Subcooling = 0 K

Pressure switch settings

Maximum HP switch setting	27.7	bar(g)
Minimum LP switch setting	1	bar(g)
LP pump down setting	1.3	bar(g)

Sound power data

Sound power level	72	dB(A)
With accoustic hood	66	dB(A)

Tolerance according EN12900

Datasheet, performance data

Maneurop reciprocating compressor. MTZ036-5

Performance data at 50 Hz, EN 12900 rating conditions, Superheat = 10 K

R449A

Cond. temp. in °C (tc)	Evaporating temperature in °C (to)								
	-30	-25	-20	-15	-10	-5	0	5	10

Cooling capacity in W

10	2 425	3 200	4 147	5 287	6 637	-	-	-	-
20	2 079	2 828	3 729	4 801	6 064	7 535	9 235	-	-
30	1 669	2 382	3 226	4 221	5 386	6 740	8 301	10 089	12 122
40	1 214	1 880	2 658	3 566	4 623	5 848	7 261	8 879	10 723
50	-	1 341	2 042	2 852	3 791	4 878	6 132	7 571	9 215
60	-	-	1 396	2 099	2 910	3 849	4 933	6 183	7 616

Power input in W

10	1 203	1 293	1 354	1 385	1 383	-	-	-	-
20	1 297	1 437	1 551	1 637	1 694	1 718	1 709	-	-
30	1 336	1 529	1 699	1 843	1 960	2 047	2 103	2 126	2 115
40	1 313	1 563	1 791	1 995	2 175	2 327	2 452	2 545	2 607
50	-	1 530	1 819	2 087	2 332	2 553	2 747	2 914	3 050
60	-	-	1 778	2 111	2 425	2 716	2 983	3 225	3 440

Current consumption in A

10	3.93	4.83	5.58	6.21	6.71	-	-	-	-
20	5.70	6.62	7.40	8.06	8.59	8.99	9.27	-	-
30	6.67	7.71	8.62	9.40	10.06	10.60	11.01	11.30	11.48
40	6.88	8.14	9.27	10.28	11.16	11.93	12.57	13.10	13.51
50	-	7.96	9.41	10.74	11.95	13.03	14.01	14.86	15.60
60	-	-	9.08	10.83	12.45	13.96	15.36	16.64	17.81

Mass flow in kg/h

10	48	63	80	101	124	-	-	-	-
20	44	59	77	98	121	149	180	-	-
30	39	55	73	94	117	144	175	210	249
40	32	48	67	88	112	139	169	203	242
50	-	39	58	80	104	131	161	195	233
60	-	-	47	69	93	120	150	184	222

Coefficient of performance (C.O.P.)

10	2.02	2.47	3.06	3.82	4.80	-	-	-	-
20	1.60	1.97	2.40	2.93	3.58	4.39	5.40	-	-
30	1.25	1.56	1.90	2.29	2.75	3.29	3.95	4.74	5.73
40	0.92	1.20	1.48	1.79	2.13	2.51	2.96	3.49	4.11
50	-	0.88	1.12	1.37	1.63	1.91	2.23	2.60	3.02
60	-	-	0.79	0.99	1.20	1.42	1.65	1.92	2.21

Nominal performance at to = -10 °C, tc = 45 °C

Cooling capacity	4 214	W
Power input	2 261	W
Current consumption	11.59	A
Mass flow	108	kg/h
C.O.P.	1.86	

to: Evaporating temperature at dew point

tc: Condensing temperature at dew point

Rating conditions : Superheat = 10 K , Subcooling = 0 K

Pressure switch settings

Maximum HP switch setting	27.7	bar(g)
Minimum LP switch setting	1	bar(g)
LP pump down setting	1.3	bar(g)

Sound power data

Sound power level	72	dB(A)
With acoustic hood	66	dB(A)

Tolerance according EN12900

Datasheet, performance data

Maneurop reciprocating compressor. MTZ036-5

Performance data at 50 Hz, EN 12900 rating conditions, Suction temp. = 20 °C

R452A

Cond. temp. in °C (tc)	Evaporating temperature in °C (to)								
	-30	-25	-20	-15	-10	-5	0	5	10

Cooling capacity in W

10	-	3 545	4 787	6 301	8 108	-	-	-	-
20	-	3 105	4 275	5 682	7 347	9 292	11 541	-	-
30	-	2 537	3 617	4 899	6 404	8 151	10 163	12 465	15 087
40	-	1 880	2 853	3 994	5 320	6 852	8 609	10 613	12 888
50	-	-	2 024	3 006	4 138	5 439	6 924	8 613	10 524
60	-	-	-	1 976	2 901	3 956	5 155	6 514	8 044

Power input in W

10	-	1 522	1 606	1 657	1 677	-	-	-	-
20	-	1 619	1 756	1 857	1 924	1 960	1 966	-	-
30	-	1 671	1 872	2 034	2 158	2 249	2 306	2 334	2 334
40	-	1 650	1 927	2 160	2 353	2 509	2 628	2 715	2 770
50	-	-	1 892	2 208	2 481	2 712	2 905	3 061	3 183
60	-	-	-	2 150	2 513	2 832	3 108	3 345	3 544

Current consumption in A

10	-	9.02	9.86	10.42	10.72	-	-	-	-
20	-	8.86	9.66	10.24	10.61	10.77	10.72	-	-
30	-	9.23	10.06	10.72	11.22	11.57	11.77	11.83	11.76
40	-	9.56	10.49	11.31	12.02	12.63	13.14	13.57	13.92
50	-	-	10.43	11.47	12.45	13.39	14.29	15.16	16.00
60	-	-	-	10.66	11.99	13.33	14.69	16.06	17.46

Mass flow in kg/h

10	-	76	102	134	172	-	-	-	-
20	-	70	96	128	166	212	266	-	-
30	-	62	88	120	158	203	255	318	391
40	-	51	77	109	146	190	242	302	374
50	-	-	63	94	130	173	223	282	352
60	-	-	-	73	109	151	199	256	323

Coefficient of performance (C.O.P.)

10	-	2.33	2.98	3.80	4.83	-	-	-	-
20	-	1.92	2.44	3.06	3.82	4.74	5.87	-	-
30	-	1.52	1.93	2.41	2.97	3.63	4.41	5.34	6.46
40	-	1.14	1.48	1.85	2.26	2.73	3.28	3.91	4.65
50	-	-	1.07	1.36	1.67	2.01	2.38	2.81	3.31
60	-	-	-	0.92	1.15	1.40	1.66	1.95	2.27

Nominal performance at to = -10 °C, tc = 45 °C

Cooling capacity	4 739	W
Power input	2 427	W
Current consumption	12.31	A
Mass flow	139	kg/h
C.O.P.	1.95	

to: Evaporating temperature at dew point

tc: Condensing temperature at dew point

Rating conditions : Suction gas temp. = 20 °C , Subcooling = 0 K

Pressure switch settings

Maximum HP switch setting	27.7	bar(g)
Minimum LP switch setting	1	bar(g)
LP pump down setting	1.3	bar(g)

Sound power data

Sound power level	72	dB(A)
With acoustic hood	66	dB(A)

Tolerance according EN12900

Datasheet, performance data

Maneurop reciprocating compressor. MTZ036-5

Performance data at 50 Hz, EN 12900 rating conditions, Superheat = 10 K

R452A

Cond. temp. in °C (tc)	Evaporating temperature in °C (to)								
	-30	-25	-20	-15	-10	-5	0	5	10

Cooling capacity in W

10	2 470	3 451	4 688	6 203	8 022	-	-	-	-
20	2 042	2 972	4 126	5 527	7 199	9 166	11 452	-	-
30	1 518	2 377	3 427	4 693	6 198	7 967	10 022	12 387	15 087
40	946	1 713	2 639	3 750	5 068	6 617	8 420	10 503	12 888
50	372	1 027	1 810	2 744	3 854	5 164	6 696	8 475	10 524
60	-	367	986	1 724	2 606	3 655	4 895	6 351	8 044

Power input in W

10	1 403	1 522	1 606	1 657	1 677	-	-	-	-
20	1 443	1 619	1 756	1 857	1 924	1 960	1 966	-	-
30	1 428	1 671	1 872	2 034	2 158	2 249	2 306	2 334	2 334
40	1 329	1 650	1 927	2 160	2 353	2 509	2 628	2 715	2 770
50	1 119	1 530	1 892	2 208	2 481	2 712	2 905	3 061	3 183
60	-	1 281	1 740	2 150	2 513	2 832	3 108	3 345	3 544

Current consumption in A

10	7.90	9.02	9.86	10.42	10.72	-	-	-	-
20	7.84	8.86	9.66	10.24	10.61	10.77	10.72	-	-
30	8.22	9.23	10.06	10.72	11.22	11.57	11.77	11.83	11.76
40	8.51	9.56	10.49	11.31	12.02	12.63	13.14	13.57	13.92
50	8.17	9.33	10.43	11.47	12.45	13.39	14.29	15.16	16.00
60	-	7.99	9.33	10.66	11.99	13.33	14.69	16.06	17.46

Mass flow in kg/h

10	64	88	116	150	189	-	-	-	-
20	57	81	110	144	183	228	280	-	-
30	47	72	101	135	174	218	269	327	391
40	34	59	89	122	161	205	255	311	374
50	16	42	72	105	143	187	235	290	352
60	-	19	49	82	120	162	210	263	323

Coefficient of performance (C.O.P.)

10	1.76	2.27	2.92	3.74	4.78	-	-	-	-
20	1.41	1.84	2.35	2.98	3.74	4.68	5.82	-	-
30	1.06	1.42	1.83	2.31	2.87	3.54	4.35	5.31	6.46
40	0.71	1.04	1.37	1.74	2.15	2.64	3.20	3.87	4.65
50	0.33	0.67	0.96	1.24	1.55	1.90	2.30	2.77	3.31
60	-	0.29	0.57	0.80	1.04	1.29	1.58	1.90	2.27

Nominal performance at to = -10 °C, tc = 45 °C

Cooling capacity	4 468	W
Power input	2 427	W
Current consumption	12.31	A
Mass flow	153	kg/h
C.O.P.	1.84	

to: Evaporating temperature at dew point

tc: Condensing temperature at dew point

Rating conditions : Superheat = 10 K , Subcooling = 0 K

Pressure switch settings

Maximum HP switch setting	27.7	bar(g)
Minimum LP switch setting	1	bar(g)
LP pump down setting	1.3	bar(g)

Sound power data

Sound power level	72	dB(A)
With acoustic hood	66	dB(A)

Tolerance according EN12900

