

Datasheets

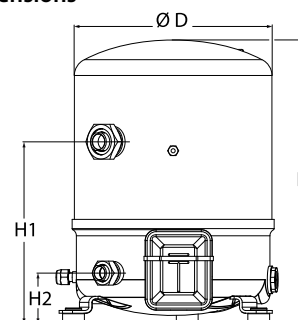
Danfoss Reciprocating compressors **MT / MTZ / NTZ**



General Characteristics

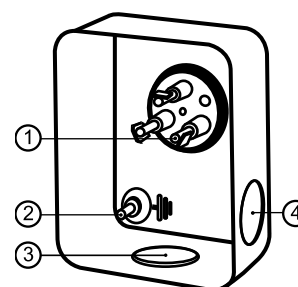
Model number (on compressor nameplate)		MTZ80HP4AVE
Code number for Singlepack*		MTZ80-4VI
Code number for Industrial pack**		MTZ80-4VM
Drawing number		8502012g
Suction and discharge connections		Rotolock
Suction connection		1-3/4 " Rotolock
Discharge connection		1-1/4 " Rotolock
Suction connection with supplied sleeve		1-1/8 " ODF
Discharge connection with supplied sleeve		3/4 " ODF
Oil sight glass		Threaded
Oil equalisation connection		3/8" flare SAE
Oil drain connection		None
LP gauge port		Schrader
IPR valve		30 bar / 8 bar
Cylinders		2
Swept volume		135.78 cm3/rev
Displacement @ Nominal speed		23.6 m3/h @ 2900 rpm - 28.5 m3/h @ 3500 rpm
Net weight		40 kg
Oil charge		1.8 litre, POE - 175PZ
Maximum system test pressure Low Side / High side		25 bar(g) / 30 bar(g)
Maximum differential test pressure		30 bar
Maximum number of starts per hour		12
Refrigerant charge limit		5 kg
Approved refrigerants		R404A,R134a,R407A/C/F,R448A,R449A,R452A,R513A

Dimensions



D=288 mm
H=413 mm
H1=265 mm
H2=74 mm
H3=- mm

Terminal box



IP55 (with cable gland)
1: Spade connectors 1/4"
2: Earth M4-12
3: Knock-out Ø 21 mm (0.83")
4: Hole Ø 21 mm (0.83")

Electrical Characteristics

Nominal voltage	380-400V/3/50Hz - 460V/3/60Hz
Voltage range	340-440 V @ 50Hz - 414-506 V @ 60Hz
Winding resistance (between phases) +/- 7% at 25°C	1.9 Ω
Maximum Continuous Current (MCC)	18 A
Locked Rotor Amps (LRA)	80 A
Motor protection	Internal overload protector

Recommended Installation torques

Oil sight glass	50 Nm
Power connections / Earth connection	2 Nm / 2 Nm
Mounting bolts	15 Nm

Parts shipped with compressor

Mounting kit with grommets, bolts, nuts, sleeves and washers
Suction & Discharge solder sleeves, rotolock nuts and gaskets (shipped with rotolock version only)
Initial oil charge
Installation instructions

Approvals : CE certified, UL certified (file SA6873), -

*Singlepack: Compressor in cardboard box

**Industrial pack: 6 Unboxed compressors on pallet (order per multiples of 6)

Rotolock accessories, suction side

Code no.

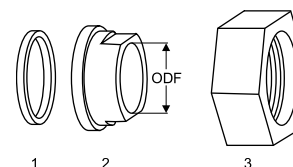
Solder sleeve, P02 (1-3/4" Rotolock, 1-1/8" ODF)	8153004
Rotolock valve, V02 (1-3/4" Rotolock, 1-1/8" ODF)	8168028
Gasket, 1-3/4"	8156132

Gaskets, sleeves and nuts

Rotolock accessories, discharge side

Code no.

Solder sleeve, P04 (1-1/4" Rotolock, 3/4" ODF)	8153008
Rotolock valve, V04 (1-1/4" Rotolock, 3/4" ODF)	8168029
Gasket, 1-1/4"	8156131



- 1: Gasket
- 2: Solder sleeve
- 3: Rotolock nut

Rotolock accessories, sets

Code no.

Valve set, V02 (1-3/4"~1-1/8"), V04 (1-1/4"~3/4")	7703009
Gasket set, 1", 1-1/4", 1-3/4", OSG gaskets black & white	8156009

Oil / lubricants

Code no.

POE lubricant, 175PZ, 1 litre can	120Z0638
POE lubricant, 175PZ, 2.5 litre can	120Z0639

Crankcase heaters

Code no.

PTC heater 27W, CE mark, UL	120Z0459
Belt type crankcase heater, 65 W, 230 V, CE mark, UL	7773107
Belt type crankcase heater, 65 W, 400 V, CE mark, UL	7773117
Belt type crankcase heater, 65 W, 460 V, CE mark, UL	120Z0466

Miscellaneous accessories

Code no.

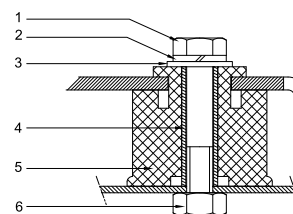
Electronic soft start kit, MCI 15 C	7705006
Acoustic hood for 2 cylinder compressor	120Z0472
Oil equalisation nut	8153127

Spare parts

Code no.

Mounting kit for 1 and 2 cylinder compressor, including 3 grommets, 3 bolts	8156001
Oil sight glass with gaskets (black & white)	8156019
Gasket for oil sight glass (black chloroprene)	8156145
Service kit for terminal box 80 x 96 mm, including 1 cover, 1 clamp	8156134

Mounting kit



- 1: Bolt (3x)
- 2: Lock washer (3x)
- 3: Flat washer (3x)
- 4: Sleeve (3x)
- 5: Grommet (3x)
- 6: Nut (3x)

Performance data at 50 Hz, EN 12900 rating conditions
R407C

Cond. temp. in °C (tc)	Evaporating temperature in °C (to)							
	-15	-10	-5	0	5	10	15	

Cooling capacity in W

35	8 130	10 768	13 905	17 601	21 917	26 914	32 652	-	-
40	7 407	9 912	12 880	16 369	20 442	25 158	30 578	-	-
45	6 669	9 036	11 827	15 104	18 926	23 354	28 449	-	-
50	-	8 147	10 755	13 811	17 376	21 510	26 273	-	-
55	-	-	9 671	12 500	15 800	19 633	24 058	-	-
60	-	-	-	11 177	14 206	17 731	21 810	-	-
65	-	-	-	9 850	12 602	15 811	19 539	-	-

Power input in W

35	3 837	4 234	4 566	4 839	5 061	5 239	5 378	-	-
40	3 980	4 453	4 856	5 196	5 481	5 717	5 910	-	-
45	4 080	4 637	5 119	5 535	5 891	6 193	6 448	-	-
50	-	4 782	5 353	5 852	6 286	6 663	6 989	-	-
55	-	-	5 552	6 143	6 665	7 125	7 529	-	-
60	-	-	-	6 405	7 022	7 573	8 065	-	-
65	-	-	-	6 634	7 355	8 006	8 592	-	-

Current consumption in A

35	8.21	8.67	9.06	9.39	9.67	9.90	10.11	-	-
40	8.38	8.94	9.43	9.84	10.20	10.51	10.78	-	-
45	8.50	9.18	9.77	10.29	10.75	11.15	11.52	-	-
50	-	9.37	10.09	10.73	11.31	11.83	12.30	-	-
55	-	-	10.36	11.15	11.86	12.51	13.10	-	-
60	-	-	-	11.51	12.38	13.18	13.92	-	-
65	-	-	-	11.81	12.85	13.82	14.72	-	-

Mass flow in kg/h

35	176	230	292	364	446	540	647	-	-
40	169	222	284	355	436	529	634	-	-
45	161	214	275	345	425	516	620	-	-
50	-	204	264	333	412	502	604	-	-
55	-	-	253	321	399	487	586	-	-
60	-	-	-	308	383	470	567	-	-
65	-	-	-	293	367	451	547	-	-

Coefficient of performance (C.O.P.)

35	2.12	2.54	3.05	3.64	4.33	5.14	6.07	-	-
40	1.86	2.23	2.65	3.15	3.73	4.40	5.17	-	-
45	1.63	1.95	2.31	2.73	3.21	3.77	4.41	-	-
50	-	1.70	2.01	2.36	2.76	3.23	3.76	-	-
55	-	-	1.74	2.03	2.37	2.76	3.20	-	-
60	-	-	-	1.75	2.02	2.34	2.70	-	-
65	-	-	-	1.48	1.71	1.98	2.27	-	-

Nominal performance at to = 5 °C, tc = 50 °C

Cooling capacity	17 376	W
Power input	6 286	W
Current consumption	11.31	A
Mass flow	412	kg/h
C.O.P.	2.76	


Pressure switch settings

Maximum HP switch setting	29.4	bar(g)
Minimum LP switch setting	1.4	bar(g)
LP pump down setting	1.7	bar(g)

Sound power data

Sound power level	82	dB(A)
With acoustic hood	76	dB(A)

to: Evaporating temperature at dew point

tc: Condensing temperature at dew point

Rating conditions : Superheat = 10 K , Subcooling = 0 K

Tolerance according EN12900

Performance data at 50 Hz, ARI rating conditions
R407C

Cond. temp. in °C (tc)	Evaporating temperature in °C (to)							
	-15	-10	-5	0	5	10	15	

Cooling capacity in W

35	8 751	11 576	14 930	18 878	23 481	28 805	34 911	-	-
40	8 016	10 713	13 901	17 646	22 009	27 055	32 848	-	-
45	7 264	9 826	12 843	16 377	20 493	25 256	30 729	-	-
50	-	8 924	11 761	15 079	18 942	23 415	28 561	-	-
55	-	-	10 666	13 761	17 364	21 541	26 354	-	-
60	-	-	-	12 432	15 769	19 643	24 119	-	-
65	-	-	-	11 100	14 166	17 733	21 867	-	-

Power input in W

35	3 837	4 234	4 566	4 839	5 061	5 239	5 378	-	-
40	3 980	4 453	4 856	5 196	5 481	5 717	5 910	-	-
45	4 080	4 637	5 119	5 535	5 891	6 193	6 448	-	-
50	-	4 782	5 353	5 852	6 286	6 663	6 989	-	-
55	-	-	5 552	6 143	6 665	7 125	7 529	-	-
60	-	-	-	6 405	7 022	7 573	8 065	-	-
65	-	-	-	6 634	7 355	8 006	8 592	-	-

Current consumption in A

35	8.21	8.67	9.06	9.39	9.67	9.90	10.11	-	-
40	8.38	8.94	9.43	9.84	10.20	10.51	10.78	-	-
45	8.50	9.18	9.77	10.29	10.75	11.15	11.52	-	-
50	-	9.37	10.09	10.73	11.31	11.83	12.30	-	-
55	-	-	10.36	11.15	11.86	12.51	13.10	-	-
60	-	-	-	11.51	12.38	13.18	13.92	-	-
65	-	-	-	11.81	12.85	13.82	14.72	-	-

Mass flow in kg/h

35	175	229	290	362	444	537	643	-	-
40	168	221	282	353	434	526	630	-	-
45	160	213	273	343	423	513	616	-	-
50	-	203	263	332	410	499	600	-	-
55	-	-	252	319	396	484	583	-	-
60	-	-	-	306	381	467	564	-	-
65	-	-	-	291	365	449	543	-	-

Coefficient of performance (C.O.P.)

35	2.28	2.73	3.27	3.90	4.64	5.50	6.49	-	-
40	2.01	2.41	2.86	3.40	4.02	4.73	5.56	-	-
45	1.78	2.12	2.51	2.96	3.48	4.08	4.77	-	-
50	-	1.87	2.20	2.58	3.01	3.51	4.09	-	-
55	-	-	1.92	2.24	2.61	3.02	3.50	-	-
60	-	-	-	1.94	2.25	2.59	2.99	-	-
65	-	-	-	1.67	1.93	2.22	2.55	-	-

Nominal performance at to = 7.2 °C, tc = 54.4 °C

Cooling capacity	19 333	W
Power input	6 825	W
Current consumption	12.08	A
Mass flow	435	kg/h
C.O.P.	2.83	

Pressure switch settings

Maximum HP switch setting	29.4	bar(g)
Minimum LP switch setting	1.4	bar(g)
LP pump down setting	1.7	bar(g)

Sound power data

Sound power level	82	dB(A)
With acoustic hood	76	dB(A)

to: Evaporating temperature at dew point

tc: Condensing temperature at dew point

Rating conditions : Superheat = 11.1 K , Subcooling = 8.3 K

Tolerance according EN12900

Performance data at 50 Hz, EN 12900 rating conditions
R134a

Cond. temp. in °C (tc)	Evaporating temperature in °C (to)							
	-25	-20	-10	-5	0	5	10	15

Cooling capacity in W

35	2 806	3 908	6 978	9 070	11 618	14 684	18 330	22 619	27 613
40	2 454	3 511	6 420	8 398	10 807	13 710	17 171	21 250	26 011
45	2 101	3 112	5 857	7 717	9 985	12 724	15 996	19 864	24 389
50	1 752	2 714	5 290	7 031	9 156	11 728	14 810	18 463	22 752
55	-	-	4 723	6 342	8 322	10 725	13 614	17 052	21 101
60	-	-	-	5 654	7 486	9 718	12 413	15 633	19 441
65	-	-	-	-	6 652	8 711	11 209	14 209	17 773
75	-	-	-	-	-	-	8 806	11 358	14 428

Power input in W

35	1 905	2 215	2 763	3 002	3 219	3 414	3 588	3 740	3 873
40	1 875	2 222	2 842	3 117	3 368	3 598	3 806	3 992	4 157
45	1 839	2 227	2 929	3 244	3 535	3 804	4 050	4 275	4 478
50	1 784	2 218	3 011	3 370	3 706	4 019	4 309	4 576	4 822
55	-	-	3 075	3 484	3 869	4 230	4 568	4 883	5 176
60	-	-	-	3 571	4 010	4 424	4 815	5 182	5 527
65	-	-	-	-	4 116	4 589	5 037	5 461	5 863
75	-	-	-	-	-	-	5 353	5 906	6 435

Current consumption in A

35	6.27	6.48	6.98	7.25	7.52	7.76	7.96	8.10	8.17
40	6.34	6.56	7.11	7.41	7.70	7.97	8.21	8.39	8.51
45	6.37	6.61	7.22	7.56	7.89	8.21	8.49	8.73	8.90
50	6.33	6.62	7.31	7.69	8.08	8.45	8.79	9.09	9.32
55	-	-	7.37	7.81	8.25	8.69	9.10	9.47	9.78
60	-	-	-	7.88	8.40	8.91	9.40	9.85	10.25
65	-	-	-	-	8.52	9.11	9.69	10.23	10.73
75	-	-	-	-	-	-	10.18	10.94	11.66

Mass flow in kg/h

35	71	97	166	211	264	327	401	487	586
40	66	92	161	205	258	321	394	479	577
45	60	87	155	199	251	313	386	470	567
50	54	80	148	192	244	305	377	460	557
55	-	-	141	184	235	296	367	450	545
60	-	-	-	175	226	286	356	438	533
65	-	-	-	-	216	276	345	426	519
75	-	-	-	-	-	-	319	398	489

Coefficient of performance (C.O.P.)

35	1.47	1.76	2.53	3.02	3.61	4.30	5.11	6.05	7.13
40	1.31	1.58	2.26	2.69	3.21	3.81	4.51	5.32	6.26
45	1.14	1.40	2.00	2.38	2.82	3.35	3.95	4.65	5.45
50	0.98	1.22	1.76	2.09	2.47	2.92	3.44	4.03	4.72
55	-	-	1.54	1.82	2.15	2.54	2.98	3.49	4.08
60	-	-	-	1.58	1.87	2.20	2.58	3.02	3.52
65	-	-	-	-	1.62	1.90	2.23	2.60	3.03
75	-	-	-	-	-	-	1.64	1.92	2.24

Nominal performance at to = 5 °C, tc = 50 °C

Cooling capacity	11 728	W
Power input	4 019	W
Current consumption	8.45	A
Mass flow	305	kg/h
C.O.P.	2.92	

Pressure switch settings

Maximum HP switch setting	20.2	bar(g)
Minimum LP switch setting	0.1	bar(g)
LP pump down setting	0.4	bar(g)

Sound power data

Sound power level	0	dB(A)
With acoustic hood	0	dB(A)

to: Evaporating temperature at dew point

tc: Condensing temperature at dew point

Rating conditions : Superheat = 10 K , Subcooling = 0 K

Tolerance according EN12900

Danfoss can accept no responsibility for possible errors in catalogues, brochures and other printed material. Danfoss reserves the right to alter its products without notice. This also applies to products already on order provided that such alternations can be made without subsequential changes being necessary in specifications already agreed. All trademarks in this material are property of the respective companies. Danfoss, the Danfoss logotype and Maneurop are trademarks of Danfoss A/S. All rights reserved.

Performance data at 50 Hz, ARI rating conditions
R134a

Cond. temp. in °C (tc)	Evaporating temperature in °C (to)							
	-25	-20	-10	-5	0	5	10	15

Cooling capacity in W

35	3 050	4 240	7 545	9 791	12 523	15 803	19 699	24 275	29 595
40	2 683	3 831	6 979	9 111	11 705	14 825	18 537	22 907	27 998
45	2 313	3 417	6 404	8 421	10 875	13 832	17 359	21 520	26 380
50	-	3 002	5 824	7 723	10 035	12 828	16 167	20 118	24 746
55	-	-	5 242	7 020	9 189	11 815	14 964	18 704	23 098
60	-	-	-	6 316	8 340	10 797	13 756	17 282	21 442
65	-	-	-	-	-	9 778	12 545	15 857	19 782
75	-	-	-	-	-	-	10 132	13 018	16 475

Power input in W

35	1 905	2 215	2 763	3 002	3 219	3 414	3 588	3 740	3 873
40	1 875	2 222	2 842	3 117	3 368	3 598	3 806	3 992	4 157
45	1 839	2 227	2 929	3 244	3 535	3 804	4 050	4 275	4 478
50	-	2 218	3 011	3 370	3 706	4 019	4 309	4 576	4 822
55	-	-	3 075	3 484	3 869	4 230	4 568	4 883	5 176
60	-	-	-	3 571	4 010	4 424	4 815	5 182	5 527
65	-	-	-	-	-	4 589	5 037	5 461	5 863
75	-	-	-	-	-	-	5 353	5 906	6 435

Current consumption in A

35	6.27	6.48	6.98	7.25	7.52	7.76	7.96	8.10	8.17
40	6.34	6.56	7.11	7.41	7.70	7.97	8.21	8.39	8.51
45	6.37	6.61	7.22	7.56	7.89	8.21	8.49	8.73	8.90
50	-	6.62	7.31	7.69	8.08	8.45	8.79	9.09	9.32
55	-	-	7.37	7.81	8.25	8.69	9.10	9.47	9.78
60	-	-	-	7.88	8.40	8.91	9.40	9.85	10.25
65	-	-	-	-	-	9.11	9.69	10.23	10.73
75	-	-	-	-	-	-	10.18	10.94	11.66

Mass flow in kg/h

35	71	97	165	210	263	326	399	484	583
40	65	92	160	204	257	319	392	476	574
45	60	86	154	198	250	312	384	467	564
50	-	80	147	191	243	303	375	458	553
55	-	-	140	183	234	294	365	447	542
60	-	-	-	175	225	285	355	436	530
65	-	-	-	-	-	274	343	423	516
75	-	-	-	-	-	-	318	396	487

Coefficient of performance (C.O.P.)

35	1.60	1.91	2.73	3.26	3.89	4.63	5.49	6.49	7.64
40	1.43	1.72	2.46	2.92	3.47	4.12	4.87	5.74	6.73
45	1.26	1.53	2.19	2.60	3.08	3.64	4.29	5.03	5.89
50	-	1.35	1.93	2.29	2.71	3.19	3.75	4.40	5.13
55	-	-	1.70	2.02	2.38	2.79	3.28	3.83	4.46
60	-	-	-	1.77	2.08	2.44	2.86	3.33	3.88
65	-	-	-	-	-	2.13	2.49	2.90	3.37
75	-	-	-	-	-	-	1.89	2.20	2.56

Nominal performance at to = 7.2 °C, tc = 54.4 °C

Cooling capacity	13 264	W
Power input	4 354	W
Current consumption	8.84	A
Mass flow	325	kg/h
C.O.P.	3.05	

Pressure switch settings

Maximum HP switch setting	20.2	bar(g)
Minimum LP switch setting	0.1	bar(g)
LP pump down setting	0.4	bar(g)

Sound power data

Sound power level	0	dB(A)
With acoustic hood	0	dB(A)

to: Evaporating temperature at dew point

tc: Condensing temperature at dew point

Rating conditions : Superheat = 11.1 K , Subcooling = 8.3 K

Tolerance according EN12900

Danfoss can accept no responsibility for possible errors in catalogues, brochures and other printed material. Danfoss reserves the right to alter its products without notice. This also applies to products already on order provided that such alternations can be made without subsequential changes being necessary in specifications already agreed. All trademarks in this material are property of the respective companies. Danfoss, the Danfoss logotype and Maneurop are trademarks of Danfoss A/S. All rights reserved.

Performance data at 50 Hz, EN 12900 rating conditions
R404A

Cond. temp. in °C (tc)	Evaporating temperature in °C (to)							
	-30	-25	-20	-15	-10	-5	0	5

Cooling capacity in W

30	4 896	6 633	8 753	11 303	14 335	17 897	22 039	26 809	32 258
35	4 294	5 905	7 863	10 219	13 021	16 318	20 161	24 597	29 678
40	3 722	5 206	7 003	9 162	11 733	14 765	18 307	22 410	27 121
45	3 175	4 531	6 165	8 127	10 466	13 232	16 473	20 240	24 581
50	2 646	3 873	5 344	7 108	9 215	11 713	14 653	18 083	22 053
55	-	3 227	4 534	6 099	7 972	10 202	12 839	15 932	19 530
60	-	2 587	3 728	5 094	6 732	8 693	11 027	13 782	17 007

Power input in W

30	3 159	3 667	4 129	4 552	4 941	5 301	5 637	5 953	6 257
35	3 181	3 745	4 261	4 733	5 167	5 568	5 941	6 291	6 624
40	3 179	3 806	4 380	4 906	5 391	5 838	6 254	6 643	7 010
45	3 151	3 845	4 483	5 069	5 609	6 108	6 572	7 005	7 413
50	3 093	3 859	4 566	5 217	5 819	6 375	6 892	7 375	7 828
55	-	3 846	4 627	5 348	6 016	6 635	7 211	7 748	8 252
60	-	3 800	4 661	5 458	6 198	6 885	7 524	8 121	8 681

Current consumption in A

30	7.26	7.76	8.29	8.82	9.33	9.80	10.23	10.60	10.88
35	7.24	7.82	8.42	9.02	9.59	10.14	10.64	11.06	11.41
40	7.23	7.89	8.56	9.23	9.89	10.51	11.08	11.58	12.00
45	7.20	7.95	8.70	9.46	10.19	10.89	11.54	12.12	12.61
50	7.15	7.98	8.83	9.67	10.49	11.28	12.01	12.68	13.25
55	-	7.98	8.92	9.86	10.77	11.65	12.48	13.23	13.90
60	-	7.91	8.96	10.00	11.01	11.99	12.91	13.77	14.53

Mass flow in kg/h

30	154	204	262	330	409	499	601	717	849
35	145	195	252	319	396	484	585	699	828
40	137	186	242	308	384	470	569	681	807
45	128	176	232	297	371	456	553	662	786
50	118	166	222	285	358	442	537	644	766
55	-	156	211	274	345	427	521	626	745
60	-	146	200	262	332	413	505	608	725

Coefficient of performance (C.O.P.)

30	1.55	1.81	2.12	2.48	2.90	3.38	3.91	4.50	5.16
35	1.35	1.58	1.85	2.16	2.52	2.93	3.39	3.91	4.48
40	1.17	1.37	1.60	1.87	2.18	2.53	2.93	3.37	3.87
45	1.01	1.18	1.38	1.60	1.87	2.17	2.51	2.89	3.32
50	0.86	1.00	1.17	1.36	1.58	1.84	2.13	2.45	2.82
55	-	0.84	0.98	1.14	1.33	1.54	1.78	2.06	2.37
60	-	0.68	0.80	0.93	1.09	1.26	1.47	1.70	1.96

Nominal performance at to = -10 °C, tc = 45 °C

Cooling capacity	10 466	W
Power input	5 609	W
Current consumption	10.19	A
Mass flow	371	kg/h
C.O.P.	1.87	

Pressure switch settings

Maximum HP switch setting	27.7	bar(g)
Minimum LP switch setting	1	bar(g)
LP pump down setting	1.3	bar(g)

Sound power data

Sound power level	79	dB(A)
With acoustic hood	73	dB(A)

to: Evaporating temperature at dew point

tc: Condensing temperature at dew point

Rating conditions : Superheat = 10 K , Subcooling = 0 K

Tolerance according EN12900

Performance data at 50 Hz, ARI rating conditions
R404A

Cond. temp. in °C (tc)	Evaporating temperature in °C (to)							
	-30	-25	-20	-15	-10	-5	0	5

Cooling capacity in W

30	5 450	7 364	9 692	12 486	15 798	19 681	24 185	29 363	35 265
35	4 831	6 623	8 793	11 395	14 480	18 102	22 311	27 160	32 701
40	4 243	5 912	7 925	10 334	13 192	16 553	20 468	24 989	30 169
45	3 680	5 227	7 082	9 299	11 931	15 030	18 651	22 846	27 667
50	3 134	4 562	6 260	8 285	10 692	13 532	16 861	20 732	25 197
55	-	3 911	5 456	7 292	9 476	12 061	15 103	18 654	22 770
60	-	3 271	4 669	6 323	8 291	10 629	13 392	16 636	20 416

Power input in W

30	3 159	3 667	4 129	4 552	4 941	5 301	5 637	5 953	6 257
35	3 181	3 745	4 261	4 733	5 167	5 568	5 941	6 291	6 624
40	3 179	3 806	4 380	4 906	5 391	5 838	6 254	6 643	7 010
45	3 151	3 845	4 483	5 069	5 609	6 108	6 572	7 005	7 413
50	3 093	3 859	4 566	5 217	5 819	6 375	6 892	7 375	7 828
55	-	3 846	4 627	5 348	6 016	6 635	7 211	7 748	8 252
60	-	3 800	4 661	5 458	6 198	6 885	7 524	8 121	8 681

Current consumption in A

30	7.26	7.76	8.29	8.82	9.33	9.80	10.23	10.60	10.88
35	7.24	7.82	8.42	9.02	9.59	10.14	10.64	11.06	11.41
40	7.23	7.89	8.56	9.23	9.89	10.51	11.08	11.58	12.00
45	7.20	7.95	8.70	9.46	10.19	10.89	11.54	12.12	12.61
50	7.15	7.98	8.83	9.67	10.49	11.28	12.01	12.68	13.25
55	-	7.98	8.92	9.86	10.77	11.65	12.48	13.23	13.90
60	-	7.91	8.96	10.00	11.01	11.99	12.91	13.77	14.53

Mass flow in kg/h

30	153	203	261	328	406	496	597	713	843
35	144	194	251	317	394	481	581	694	822
40	136	185	241	306	381	467	565	676	801
45	127	175	231	295	369	453	549	658	781
50	118	165	220	284	356	439	533	640	760
55	-	155	210	272	343	425	517	622	740
60	-	145	199	260	330	410	501	604	720

Coefficient of performance (C.O.P.)

30	1.73	2.01	2.35	2.74	3.20	3.71	4.29	4.93	5.64
35	1.52	1.77	2.06	2.41	2.80	3.25	3.76	4.32	4.94
40	1.33	1.55	1.81	2.11	2.45	2.84	3.27	3.76	4.30
45	1.17	1.36	1.58	1.83	2.13	2.46	2.84	3.26	3.73
50	1.01	1.18	1.37	1.59	1.84	2.12	2.45	2.81	3.22
55	-	1.02	1.18	1.36	1.58	1.82	2.09	2.41	2.76
60	-	0.86	1.00	1.16	1.34	1.54	1.78	2.05	2.35

Nominal performance at to = -10 °C, tc = 45 °C

Cooling capacity	11 931	W
Power input	5 609	W
Current consumption	10.19	A
Mass flow	369	kg/h
C.O.P.	2.13	

Pressure switch settings

Maximum HP switch setting	27.7	bar(g)
Minimum LP switch setting	1	bar(g)
LP pump down setting	1.3	bar(g)

Sound power data

Sound power level	79	dB(A)
With acoustic hood	73	dB(A)

to: Evaporating temperature at dew point

tc: Condensing temperature at dew point

Rating conditions : Superheat = 11.1 K , Subcooling = 8.3 K

Tolerance according EN12900

Performance data at 50 Hz, EN 12900 rating conditions
R407A

Cond. temp. in °C (tc)	Evaporating temperature in °C (to)							
	-30	-25	-20	-15	-10	-5	0	5

Cooling capacity in W

30	3 620	5 261	7 253	9 645	12 486	15 827	19 715	24 202	29 336
35	3 121	4 685	6 573	8 836	11 522	14 682	18 365	22 620	27 497
40	2 623	4 103	5 883	8 012	10 539	13 514	16 986	21 005	25 620
45	2 131	3 524	5 191	7 181	9 544	12 329	15 586	19 364	23 712
50	-	2 954	4 503	6 350	8 544	11 135	14 171	17 703	21 781
55	-	-	3 827	5 525	7 546	9 937	12 749	16 031	19 832
60	-	-	-	4 715	6 557	8 744	11 327	14 354	17 874

Power input in W

30	2 392	2 905	3 386	3 836	4 254	4 641	4 995	5 318	5 608
35	2 361	2 927	3 461	3 962	4 429	4 863	5 264	5 631	5 964
40	2 306	2 931	3 521	4 077	4 598	5 085	5 536	5 953	6 333
45	2 225	2 913	3 565	4 181	4 761	5 305	5 812	6 282	6 716
50	-	2 874	3 592	4 273	4 917	5 522	6 090	6 619	7 110
55	-	-	3 600	4 351	5 063	5 735	6 368	6 961	7 514
60	-	-	-	4 414	5 199	5 942	6 645	7 306	7 926

Current consumption in A

30	6.50	6.99	7.50	8.02	8.54	9.02	9.45	9.82	10.11
35	6.47	7.01	7.57	8.15	8.72	9.27	9.78	10.23	10.60
40	6.46	7.04	7.66	8.30	8.94	9.56	10.15	10.68	11.14
45	6.43	7.07	7.75	8.46	9.17	9.87	10.54	11.16	11.72
50	-	7.07	7.82	8.60	9.39	10.18	10.94	11.65	12.31
55	-	-	7.85	8.71	9.59	10.46	11.32	12.14	12.90
60	-	-	-	8.77	9.74	10.71	11.66	12.59	13.47

Mass flow in kg/h

30	86	123	166	217	276	343	421	510	610
35	78	115	159	209	267	335	412	499	599
40	70	107	150	200	258	325	401	488	586
45	61	98	141	190	248	314	390	476	573
50	-	88	130	180	237	302	377	462	558
55	-	-	119	168	224	289	363	447	542
60	-	-	-	156	212	275	348	431	525

Coefficient of performance (C.O.P.)

30	1.51	1.81	2.14	2.51	2.93	3.41	3.95	4.55	5.23
35	1.32	1.60	1.90	2.23	2.60	3.02	3.49	4.02	4.61
40	1.14	1.40	1.67	1.97	2.29	2.66	3.07	3.53	4.05
45	0.96	1.21	1.46	1.72	2.00	2.32	2.68	3.08	3.53
50	-	1.03	1.25	1.49	1.74	2.02	2.33	2.67	3.06
55	-	-	1.06	1.27	1.49	1.73	2.00	2.30	2.64
60	-	-	-	1.07	1.26	1.47	1.70	1.96	2.26

Nominal performance at to = -10 °C, tc = 45 °C

Cooling capacity	9 544	W
Power input	4 761	W
Current consumption	9.17	A
Mass flow	248	kg/h
C.O.P.	2.00	

Pressure switch settings

Maximum HP switch setting	25.8	bar(g)
Minimum LP switch setting	0.9	bar(g)
LP pump down setting	1.2	bar(g)

Sound power data

Sound power level	78	dB(A)
With acoustic hood	72	dB(A)

to: Evaporating temperature at dew point

tc: Condensing temperature at dew point

Rating conditions : Superheat = 10 K , Subcooling = 0 K

Tolerance according EN12900

Performance data at 50 Hz, ARI rating conditions
R407A

Cond. temp. in °C (tc)	Evaporating temperature in °C (to)							
	-30	-25	-20	-15	-10	-5	0	5

Cooling capacity in W

30	3 915	5 682	7 822	10 387	13 430	17 002	21 154	25 939	31 407
35	3 396	5 088	7 128	9 567	12 458	15 853	19 804	24 361	29 578
40	2 873	4 487	6 421	8 730	11 465	14 678	18 423	22 749	27 710
45	2 354	3 884	5 709	7 883	10 457	13 485	17 019	21 110	25 812
50	-	3 287	4 999	7 033	9 443	12 281	15 601	19 454	23 893
55	-	-	4 298	6 189	8 430	11 075	14 178	17 789	21 964
60	-	-	-	5 358	7 428	9 878	12 761	16 130	20 039

Power input in W

30	2 392	2 905	3 386	3 836	4 254	4 641	4 995	5 318	5 608
35	2 361	2 927	3 461	3 962	4 429	4 863	5 264	5 631	5 964
40	2 306	2 931	3 521	4 077	4 598	5 085	5 536	5 953	6 333
45	2 225	2 913	3 565	4 181	4 761	5 305	5 812	6 282	6 716
50	-	2 874	3 592	4 273	4 917	5 522	6 090	6 619	7 110
55	-	-	3 600	4 351	5 063	5 735	6 368	6 961	7 514
60	-	-	-	4 414	5 199	5 942	6 645	7 306	7 926

Current consumption in A

30	6.50	6.99	7.50	8.02	8.54	9.02	9.45	9.82	10.11
35	6.47	7.01	7.57	8.15	8.72	9.27	9.78	10.23	10.60
40	6.46	7.04	7.66	8.30	8.94	9.56	10.15	10.68	11.14
45	6.43	7.07	7.75	8.46	9.17	9.87	10.54	11.16	11.72
50	-	7.07	7.82	8.60	9.39	10.18	10.94	11.65	12.31
55	-	-	7.85	8.71	9.59	10.46	11.32	12.14	12.90
60	-	-	-	8.77	9.74	10.71	11.66	12.59	13.47

Mass flow in kg/h

30	86	122	166	216	274	342	419	507	606
35	78	115	158	208	266	333	409	497	595
40	69	106	149	199	257	323	399	485	583
45	60	97	140	189	246	312	387	473	569
50	-	87	130	179	235	300	375	459	555
55	-	-	119	167	223	288	361	444	539
60	-	-	-	155	210	274	346	429	522

Coefficient of performance (C.O.P.)

30	1.64	1.96	2.31	2.71	3.16	3.66	4.23	4.88	5.60
35	1.44	1.74	2.06	2.42	2.81	3.26	3.76	4.33	4.96
40	1.25	1.53	1.82	2.14	2.49	2.89	3.33	3.82	4.38
45	1.06	1.33	1.60	1.89	2.20	2.54	2.93	3.36	3.84
50	-	1.14	1.39	1.65	1.92	2.22	2.56	2.94	3.36
55	-	-	1.19	1.42	1.67	1.93	2.23	2.56	2.92
60	-	-	-	1.21	1.43	1.66	1.92	2.21	2.53

Nominal performance at to = -10 °C, tc = 45 °C

Cooling capacity	10 457	W
Power input	4 761	W
Current consumption	9.17	A
Mass flow	246	kg/h
C.O.P.	2.20	

Pressure switch settings

Maximum HP switch setting	25.8	bar(g)
Minimum LP switch setting	0.9	bar(g)
LP pump down setting	1.2	bar(g)

Sound power data

Sound power level	78	dB(A)
With acoustic hood	72	dB(A)

to: Evaporating temperature at dew point

tc: Condensing temperature at dew point

Rating conditions : Superheat = 11.1 K , Subcooling = 8.3 K

Tolerance according EN12900

Performance data at 50 Hz, EN 12900 rating conditions
R407F

Cond. temp. in °C (tc)	Evaporating temperature in °C (to)								
	-30	-25	-20	-15	-10	-5	0	5	10

Cooling capacity in W

30	-	5 722	7 968	10 676	13 901	17 703	22 138	27 265	33 141
35	-	4 962	7 014	9 482	12 425	15 900	19 964	24 677	30 095
40	-	4 327	6 220	8 485	11 180	14 365	18 095	22 429	27 425
45	-	3 786	5 555	7 653	10 138	13 067	16 499	20 491	25 101
50	-	-	4 990	6 957	9 267	11 977	15 147	18 832	23 092
55	-	-	-	6 365	8 536	11 064	14 007	17 423	21 369
60	-	-	-	-	-	-	-	-	-

Power input in W

30	-	3 093	3 587	4 054	4 481	4 855	5 163	5 392	5 527
35	-	3 128	3 666	4 186	4 676	5 120	5 508	5 824	6 056
40	-	3 168	3 744	4 311	4 856	5 365	5 825	6 222	6 544
45	-	3 229	3 837	4 444	5 038	5 605	6 131	6 603	7 009
50	-	-	3 961	4 602	5 239	5 856	6 442	6 983	7 465
55	-	-	-	4 801	5 473	6 136	6 774	7 377	7 930
60	-	-	-	-	-	-	-	-	-

Current consumption in A

30	-	6.99	7.55	8.11	8.66	9.16	9.59	9.92	10.11
35	-	7.10	7.70	8.32	8.93	9.51	10.02	10.44	10.74
40	-	7.16	7.81	8.49	9.18	9.84	10.44	10.96	11.37
45	-	7.20	7.91	8.66	9.42	10.17	10.87	11.50	12.03
50	-	-	8.02	8.85	9.69	10.54	11.34	12.09	12.74
55	-	-	-	9.07	10.01	10.95	11.87	12.74	13.53
60	-	-	-	-	-	-	-	-	-

Mass flow in kg/h

30	-	118	162	214	275	345	426	519	624
35	-	108	150	199	257	324	402	490	591
40	-	99	139	187	243	307	382	467	563
45	-	91	131	178	232	295	367	449	542
50	-	-	126	172	225	286	356	436	526
55	-	-	-	168	221	281	350	428	517
60	-	-	-	-	-	-	-	-	-

Coefficient of performance (C.O.P.)

30	-	1.85	2.22	2.63	3.10	3.65	4.29	5.06	6.00
35	-	1.59	1.91	2.27	2.66	3.11	3.62	4.24	4.97
40	-	1.37	1.66	1.97	2.30	2.68	3.11	3.60	4.19
45	-	1.17	1.45	1.72	2.01	2.33	2.69	3.10	3.58
50	-	-	1.26	1.51	1.77	2.05	2.35	2.70	3.09
55	-	-	-	1.33	1.56	1.80	2.07	2.36	2.69
60	-	-	-	-	-	-	-	-	-

Nominal performance at to = -10 °C, tc = 45 °C

Cooling capacity	10 138	W
Power input	5 038	W
Current consumption	9.42	A
Mass flow	232	kg/h
C.O.P.	2.01	

Pressure switch settings

Maximum HP switch setting	24	bar(g)
Minimum LP switch setting	1	bar(g)
LP pump down setting	1.26	bar(g)

Sound power data

Sound power level	78	dB(A)
With acoustic hood	72	dB(A)

to: Evaporating temperature at dew point

tc: Condensing temperature at dew point

Rating conditions : Superheat = 10 K , Subcooling = 0 K

Tolerance according EN12900

Performance data at 50 Hz, ARI rating conditions
R407F

Cond. temp. in °C (tc)	Evaporating temperature in °C (to)								
	-30	-25	-20	-15	-10	-5	0	5	10

Cooling capacity in W

30	-	6 132	8 532	11 419	14 854	18 899	23 613	29 056	35 290
35	-	5 344	7 544	10 187	13 334	17 046	21 383	26 406	32 174
40	-	4 685	6 725	9 162	12 059	15 476	19 474	24 113	29 455
45	-	4 125	6 044	8 315	11 000	14 160	17 857	22 152	27 106
50	-	-	5 470	7 614	10 127	13 070	16 506	20 496	25 101
55	-	-	-	7 032	9 414	12 181	15 397	19 123	23 420
60	-	-	-	-	-	-	-	-	-

Power input in W

30	-	3 093	3 587	4 054	4 481	4 855	5 163	5 392	5 527
35	-	3 128	3 666	4 186	4 676	5 120	5 508	5 824	6 056
40	-	3 168	3 744	4 311	4 856	5 365	5 825	6 222	6 544
45	-	3 229	3 837	4 444	5 038	5 605	6 131	6 603	7 009
50	-	-	3 961	4 602	5 239	5 856	6 442	6 983	7 465
55	-	-	-	4 801	5 473	6 136	6 774	7 377	7 930
60	-	-	-	-	-	-	-	-	-

Current consumption in A

30	-	6.99	7.55	8.11	8.66	9.16	9.59	9.92	10.11
35	-	7.10	7.70	8.32	8.93	9.51	10.02	10.44	10.74
40	-	7.16	7.81	8.49	9.18	9.84	10.44	10.96	11.37
45	-	7.20	7.91	8.66	9.42	10.17	10.87	11.50	12.03
50	-	-	8.02	8.85	9.69	10.54	11.34	12.09	12.74
55	-	-	-	9.07	10.01	10.95	11.87	12.74	13.53
60	-	-	-	-	-	-	-	-	-

Mass flow in kg/h

30	-	117	161	213	273	343	424	516	620
35	-	107	149	198	256	322	399	487	587
40	-	98	139	186	242	306	379	464	560
45	-	91	131	177	231	293	364	446	538
50	-	-	125	171	224	284	354	433	523
55	-	-	-	167	219	279	348	426	513
60	-	-	-	-	-	-	-	-	-

Coefficient of performance (C.O.P.)

30	-	1.98	2.38	2.82	3.31	3.89	4.57	5.39	6.38
35	-	1.71	2.06	2.43	2.85	3.33	3.88	4.53	5.31
40	-	1.48	1.80	2.13	2.48	2.88	3.34	3.88	4.50
45	-	1.28	1.58	1.87	2.18	2.53	2.91	3.35	3.87
50	-	-	1.38	1.65	1.93	2.23	2.56	2.94	3.36
55	-	-	-	1.46	1.72	1.99	2.27	2.59	2.95
60	-	-	-	-	-	-	-	-	-

Nominal performance at to = -10 °C, tc = 45 °C

Cooling capacity	11 000	W
Power input	5 038	W
Current consumption	9.42	A
Mass flow	231	kg/h
C.O.P.	2.18	

Pressure switch settings

Maximum HP switch setting	24	bar(g)
Minimum LP switch setting	1	bar(g)
LP pump down setting	1.26	bar(g)

Sound power data

Sound power level	78	dB(A)
With acoustic hood	72	dB(A)

to: Evaporating temperature at dew point

tc: Condensing temperature at dew point

Rating conditions : Superheat = 11.1 K , Subcooling = 8.3 K

Tolerance according EN12900

Performance data at 50 Hz, EN 12900 rating conditions
R134a

Cond. temp. in °C (tc)	Evaporating temperature in °C (to)							
	-25	-20	-10	-5	0	5	10	15

Cooling capacity in W

35	2 806	3 908	6 978	9 070	11 618	14 684	18 330	22 619	27 613
40	2 454	3 511	6 420	8 398	10 807	13 710	17 171	21 250	26 011
45	2 101	3 112	5 857	7 717	9 985	12 724	15 996	19 864	24 389
50	1 752	2 714	5 290	7 031	9 156	11 728	14 810	18 463	22 752
55	-	-	4 723	6 342	8 322	10 725	13 614	17 052	21 101
60	-	-	-	5 654	7 486	9 718	12 413	15 633	19 441
65	-	-	-	-	6 652	8 711	11 209	14 209	17 773
75	-	-	-	-	-	-	8 806	11 358	14 428

Power input in W

35	1 905	2 215	2 763	3 002	3 219	3 414	3 588	3 740	3 873
40	1 875	2 222	2 842	3 117	3 368	3 598	3 806	3 992	4 157
45	1 839	2 227	2 929	3 244	3 535	3 804	4 050	4 275	4 478
50	1 784	2 218	3 011	3 370	3 706	4 019	4 309	4 576	4 822
55	-	-	3 075	3 484	3 869	4 230	4 568	4 883	5 176
60	-	-	-	3 571	4 010	4 424	4 815	5 182	5 527
65	-	-	-	-	4 116	4 589	5 037	5 461	5 863
75	-	-	-	-	-	-	5 353	5 906	6 435

Current consumption in A

35	6.27	6.48	6.98	7.25	7.52	7.76	7.96	8.10	8.17
40	6.34	6.56	7.11	7.41	7.70	7.97	8.21	8.39	8.51
45	6.37	6.61	7.22	7.56	7.89	8.21	8.49	8.73	8.90
50	6.33	6.62	7.31	7.69	8.08	8.45	8.79	9.09	9.32
55	-	-	7.37	7.81	8.25	8.69	9.10	9.47	9.78
60	-	-	-	7.88	8.40	8.91	9.40	9.85	10.25
65	-	-	-	-	8.52	9.11	9.69	10.23	10.73
75	-	-	-	-	-	-	10.18	10.94	11.66

Mass flow in kg/h

35	71	97	166	211	264	327	401	487	586
40	66	92	161	205	258	321	394	479	577
45	60	87	155	199	251	313	386	470	567
50	54	80	148	192	244	305	377	460	557
55	-	-	141	184	235	296	367	450	545
60	-	-	-	175	226	286	356	438	533
65	-	-	-	-	216	276	345	426	519
75	-	-	-	-	-	-	319	398	489

Coefficient of performance (C.O.P.)

35	1.47	1.76	2.53	3.02	3.61	4.30	5.11	6.05	7.13
40	1.31	1.58	2.26	2.69	3.21	3.81	4.51	5.32	6.26
45	1.14	1.40	2.00	2.38	2.82	3.35	3.95	4.65	5.45
50	0.98	1.22	1.76	2.09	2.47	2.92	3.44	4.03	4.72
55	-	-	1.54	1.82	2.15	2.54	2.98	3.49	4.08
60	-	-	-	1.58	1.87	2.20	2.58	3.02	3.52
65	-	-	-	-	1.62	1.90	2.23	2.60	3.03
75	-	-	-	-	-	-	1.64	1.92	2.24

Nominal performance at to = 5 °C, tc = 50 °C

Cooling capacity	11 728	W
Power input	4 019	W
Current consumption	8.45	A
Mass flow	305	kg/h
C.O.P.	2.92	

Pressure switch settings

Maximum HP switch setting	20.2	bar(g)
Minimum LP switch setting	0.1	bar(g)
LP pump down setting	0.4	bar(g)

Sound power data

Sound power level	0	dB(A)
With acoustic hood	0	dB(A)

to: Evaporating temperature at dew point

tc: Condensing temperature at dew point

Rating conditions : Superheat = 10 K , Subcooling = 0 K

Tolerance according EN12900

Danfoss can accept no responsibility for possible errors in catalogues, brochures and other printed material. Danfoss reserves the right to alter its products without notice. This also applies to products already on order provided that such alternations can be made without subsequential changes being necessary in specifications already agreed. All trademarks in this material are property of the respective companies. Danfoss, the Danfoss logotype and Maneurop are trademarks of Danfoss A/S. All rights reserved.

Performance data at 50 Hz, ARI rating conditions
R134a

Cond. temp. in °C (tc)	Evaporating temperature in °C (to)							
	-25	-20	-10	-5	0	5	10	15

Cooling capacity in W

35	3 050	4 240	7 545	9 791	12 523	15 803	19 699	24 275	29 595
40	2 683	3 831	6 979	9 111	11 705	14 825	18 537	22 907	27 998
45	2 313	3 417	6 404	8 421	10 875	13 832	17 359	21 520	26 380
50	-	3 002	5 824	7 723	10 035	12 828	16 167	20 118	24 746
55	-	-	5 242	7 020	9 189	11 815	14 964	18 704	23 098
60	-	-	-	6 316	8 340	10 797	13 756	17 282	21 442
65	-	-	-	-	-	9 778	12 545	15 857	19 782
75	-	-	-	-	-	-	10 132	13 018	16 475

Power input in W

35	1 905	2 215	2 763	3 002	3 219	3 414	3 588	3 740	3 873
40	1 875	2 222	2 842	3 117	3 368	3 598	3 806	3 992	4 157
45	1 839	2 227	2 929	3 244	3 535	3 804	4 050	4 275	4 478
50	-	2 218	3 011	3 370	3 706	4 019	4 309	4 576	4 822
55	-	-	3 075	3 484	3 869	4 230	4 568	4 883	5 176
60	-	-	-	3 571	4 010	4 424	4 815	5 182	5 527
65	-	-	-	-	-	4 589	5 037	5 461	5 863
75	-	-	-	-	-	-	5 353	5 906	6 435

Current consumption in A

35	6.27	6.48	6.98	7.25	7.52	7.76	7.96	8.10	8.17
40	6.34	6.56	7.11	7.41	7.70	7.97	8.21	8.39	8.51
45	6.37	6.61	7.22	7.56	7.89	8.21	8.49	8.73	8.90
50	-	6.62	7.31	7.69	8.08	8.45	8.79	9.09	9.32
55	-	-	7.37	7.81	8.25	8.69	9.10	9.47	9.78
60	-	-	-	7.88	8.40	8.91	9.40	9.85	10.25
65	-	-	-	-	-	9.11	9.69	10.23	10.73
75	-	-	-	-	-	-	10.18	10.94	11.66

Mass flow in kg/h

35	71	97	165	210	263	326	399	484	583
40	65	92	160	204	257	319	392	476	574
45	60	86	154	198	250	312	384	467	564
50	-	80	147	191	243	303	375	458	553
55	-	-	140	183	234	294	365	447	542
60	-	-	-	175	225	285	355	436	530
65	-	-	-	-	-	274	343	423	516
75	-	-	-	-	-	-	318	396	487

Coefficient of performance (C.O.P.)

35	1.60	1.91	2.73	3.26	3.89	4.63	5.49	6.49	7.64
40	1.43	1.72	2.46	2.92	3.47	4.12	4.87	5.74	6.73
45	1.26	1.53	2.19	2.60	3.08	3.64	4.29	5.03	5.89
50	-	1.35	1.93	2.29	2.71	3.19	3.75	4.40	5.13
55	-	-	1.70	2.02	2.38	2.79	3.28	3.83	4.46
60	-	-	-	1.77	2.08	2.44	2.86	3.33	3.88
65	-	-	-	-	-	2.13	2.49	2.90	3.37
75	-	-	-	-	-	-	1.89	2.20	2.56

Nominal performance at to = 7.2 °C, tc = 54.4 °C

Cooling capacity	13 264	W
Power input	4 354	W
Current consumption	8.84	A
Mass flow	325	kg/h
C.O.P.	3.05	

Pressure switch settings

Maximum HP switch setting	20.2	bar(g)
Minimum LP switch setting	0.1	bar(g)
LP pump down setting	0.4	bar(g)

Sound power data

Sound power level	0	dB(A)
With acoustic hood	0	dB(A)

to: Evaporating temperature at dew point

tc: Condensing temperature at dew point

Rating conditions : Superheat = 11.1 K , Subcooling = 8.3 K

Tolerance according EN12900

Danfoss can accept no responsibility for possible errors in catalogues, brochures and other printed material. Danfoss reserves the right to alter its products without notice. This also applies to products already on order provided that such alternations can be made without subsequential changes being necessary in specifications already agreed. All trademarks in this material are property of the respective companies. Danfoss, the Danfoss logotype and Maneurop are trademarks of Danfoss A/S. All rights reserved.

Performance data at 50 Hz, EN 12900 rating conditions
R407C

Cond. temp. in °C (tc)	Evaporating temperature in °C (to)							
	-15	-10	-5	0	5	10	15	

Cooling capacity in W

35	8 130	10 768	13 905	17 601	21 917	26 914	32 652	-	-
40	7 407	9 912	12 880	16 369	20 442	25 158	30 578	-	-
45	6 669	9 036	11 827	15 104	18 926	23 354	28 449	-	-
50	-	8 147	10 755	13 811	17 376	21 510	26 273	-	-
55	-	-	9 671	12 500	15 800	19 633	24 058	-	-
60	-	-	-	11 177	14 206	17 731	21 810	-	-
65	-	-	-	9 850	12 602	15 811	19 539	-	-

Power input in W

35	3 837	4 234	4 566	4 839	5 061	5 239	5 378	-	-
40	3 980	4 453	4 856	5 196	5 481	5 717	5 910	-	-
45	4 080	4 637	5 119	5 535	5 891	6 193	6 448	-	-
50	-	4 782	5 353	5 852	6 286	6 663	6 989	-	-
55	-	-	5 552	6 143	6 665	7 125	7 529	-	-
60	-	-	-	6 405	7 022	7 573	8 065	-	-
65	-	-	-	6 634	7 355	8 006	8 592	-	-

Current consumption in A

35	8.21	8.67	9.06	9.39	9.67	9.90	10.11	-	-
40	8.38	8.94	9.43	9.84	10.20	10.51	10.78	-	-
45	8.50	9.18	9.77	10.29	10.75	11.15	11.52	-	-
50	-	9.37	10.09	10.73	11.31	11.83	12.30	-	-
55	-	-	10.36	11.15	11.86	12.51	13.10	-	-
60	-	-	-	11.51	12.38	13.18	13.92	-	-
65	-	-	-	11.81	12.85	13.82	14.72	-	-

Mass flow in kg/h

35	176	230	292	364	446	540	647	-	-
40	169	222	284	355	436	529	634	-	-
45	161	214	275	345	425	516	620	-	-
50	-	204	264	333	412	502	604	-	-
55	-	-	253	321	399	487	586	-	-
60	-	-	-	308	383	470	567	-	-
65	-	-	-	293	367	451	547	-	-

Coefficient of performance (C.O.P.)

35	2.12	2.54	3.05	3.64	4.33	5.14	6.07	-	-
40	1.86	2.23	2.65	3.15	3.73	4.40	5.17	-	-
45	1.63	1.95	2.31	2.73	3.21	3.77	4.41	-	-
50	-	1.70	2.01	2.36	2.76	3.23	3.76	-	-
55	-	-	1.74	2.03	2.37	2.76	3.20	-	-
60	-	-	-	1.75	2.02	2.34	2.70	-	-
65	-	-	-	1.48	1.71	1.98	2.27	-	-

Nominal performance at to = 5 °C, tc = 50 °C

Cooling capacity	17 376	W
Power input	6 286	W
Current consumption	11.31	A
Mass flow	412	kg/h
C.O.P.	2.76	


Pressure switch settings

Maximum HP switch setting	29.4	bar(g)
Minimum LP switch setting	1.4	bar(g)
LP pump down setting	1.7	bar(g)

Sound power data

Sound power level	82	dB(A)
With acoustic hood	76	dB(A)

to: Evaporating temperature at dew point

tc: Condensing temperature at dew point

Rating conditions : Superheat = 10 K , Subcooling = 0 K

Tolerance according EN12900

Performance data at 50 Hz, ARI rating conditions
R407C

Cond. temp. in °C (tc)	Evaporating temperature in °C (to)							
	-15	-10	-5	0	5	10	15	

Cooling capacity in W

35	8 751	11 576	14 930	18 878	23 481	28 805	34 911	-	-
40	8 016	10 713	13 901	17 646	22 009	27 055	32 848	-	-
45	7 264	9 826	12 843	16 377	20 493	25 256	30 729	-	-
50	-	8 924	11 761	15 079	18 942	23 415	28 561	-	-
55	-	-	10 666	13 761	17 364	21 541	26 354	-	-
60	-	-	-	12 432	15 769	19 643	24 119	-	-
65	-	-	-	11 100	14 166	17 733	21 867	-	-

Power input in W

35	3 837	4 234	4 566	4 839	5 061	5 239	5 378	-	-
40	3 980	4 453	4 856	5 196	5 481	5 717	5 910	-	-
45	4 080	4 637	5 119	5 535	5 891	6 193	6 448	-	-
50	-	4 782	5 353	5 852	6 286	6 663	6 989	-	-
55	-	-	5 552	6 143	6 665	7 125	7 529	-	-
60	-	-	-	6 405	7 022	7 573	8 065	-	-
65	-	-	-	6 634	7 355	8 006	8 592	-	-

Current consumption in A

35	8.21	8.67	9.06	9.39	9.67	9.90	10.11	-	-
40	8.38	8.94	9.43	9.84	10.20	10.51	10.78	-	-
45	8.50	9.18	9.77	10.29	10.75	11.15	11.52	-	-
50	-	9.37	10.09	10.73	11.31	11.83	12.30	-	-
55	-	-	10.36	11.15	11.86	12.51	13.10	-	-
60	-	-	-	11.51	12.38	13.18	13.92	-	-
65	-	-	-	11.81	12.85	13.82	14.72	-	-

Mass flow in kg/h

35	175	229	290	362	444	537	643	-	-
40	168	221	282	353	434	526	630	-	-
45	160	213	273	343	423	513	616	-	-
50	-	203	263	332	410	499	600	-	-
55	-	-	252	319	396	484	583	-	-
60	-	-	-	306	381	467	564	-	-
65	-	-	-	291	365	449	543	-	-

Coefficient of performance (C.O.P.)

35	2.28	2.73	3.27	3.90	4.64	5.50	6.49	-	-
40	2.01	2.41	2.86	3.40	4.02	4.73	5.56	-	-
45	1.78	2.12	2.51	2.96	3.48	4.08	4.77	-	-
50	-	1.87	2.20	2.58	3.01	3.51	4.09	-	-
55	-	-	1.92	2.24	2.61	3.02	3.50	-	-
60	-	-	-	1.94	2.25	2.59	2.99	-	-
65	-	-	-	1.67	1.93	2.22	2.55	-	-

Nominal performance at to = 7.2 °C, tc = 54.4 °C

Cooling capacity	19 333	W
Power input	6 825	W
Current consumption	12.08	A
Mass flow	435	kg/h
C.O.P.	2.83	

Pressure switch settings

Maximum HP switch setting	29.4	bar(g)
Minimum LP switch setting	1.4	bar(g)
LP pump down setting	1.7	bar(g)

Sound power data

Sound power level	82	dB(A)
With acoustic hood	76	dB(A)

to: Evaporating temperature at dew point

tc: Condensing temperature at dew point

Rating conditions : Superheat = 11.1 K , Subcooling = 8.3 K

Tolerance according EN12900

Performance data at 50 Hz, EN 12900 rating conditions, Suction temp. = 20 °C
R448A

Cond. temp. in °C (tc)	Evaporating temperature in °C (to)								
	-30	-25	-20	-15	-10	-5	0	5	10

Cooling capacity in W

10	-	7 689	10 032	12 895	16 330	-	-	-	-
20	-	6 794	8 958	11 589	14 738	18 457	22 806	-	-
30	-	5 837	7 800	10 178	13 019	16 373	20 293	24 840	30 084
40	-	-	6 585	8 688	11 199	14 166	17 638	21 669	26 318
50	-	-	-	7 145	9 307	11 866	14 869	18 363	22 398
60	-	-	-	-	7 367	9 500	12 015	14 952	18 353

Power input in W

10	-	2 496	2 651	2 733	2 730	-	-	-	-
20	-	2 891	3 170	3 396	3 554	3 634	3 620	-	-
30	-	3 158	3 552	3 910	4 220	4 469	4 644	4 732	4 721
40	-	-	3 816	4 297	4 747	5 155	5 508	5 793	5 996
50	-	-	-	4 575	5 156	5 713	6 232	6 703	7 110
60	-	-	-	-	5 465	6 160	6 837	7 482	8 084

Current consumption in A

10	-	6.92	7.18	7.35	7.39	-	-	-	-
20	-	7.24	7.60	7.91	8.14	8.24	8.18	-	-
30	-	7.48	7.95	8.40	8.80	9.12	9.32	9.37	9.23
40	-	-	8.21	8.81	9.39	9.93	10.39	10.73	10.93
50	-	-	-	9.14	9.90	10.66	11.38	12.02	12.55
60	-	-	-	-	10.34	11.32	12.29	13.23	14.09

Mass flow in kg/h

10	-	126	165	212	270	-	-	-	-
20	-	120	158	206	262	330	411	-	-
30	-	111	149	196	251	318	398	493	606
40	-	-	138	183	237	302	380	473	584
50	-	-	-	167	219	282	358	448	555
60	-	-	-	-	199	259	331	418	522

Coefficient of performance (C.O.P.)

10	-	3.08	3.78	4.72	5.98	-	-	-	-
20	-	2.35	2.83	3.41	4.15	5.08	6.30	-	-
30	-	1.85	2.20	2.60	3.08	3.66	4.37	5.25	6.37
40	-	-	1.73	2.02	2.36	2.75	3.20	3.74	4.39
50	-	-	-	1.56	1.81	2.08	2.39	2.74	3.15
60	-	-	-	-	1.35	1.54	1.76	2.00	2.27

Nominal performance at to = -10 °C, tc = 45 °C

Cooling capacity	10 260	W
Power input	4 965	W
Current consumption	9.66	A
Mass flow	229	kg/h
C.O.P.	2.07	

Pressure switch settings

Maximum HP switch setting	27.7	bar(g)
Minimum LP switch setting	1	bar(g)
LP pump down setting	1.3	bar(g)

Sound power data

Sound power level	80	dB(A)
With acoustic hood	74	dB(A)

to: Evaporating temperature at dew point

tc: Condensing temperature at dew point

Rating conditions : Suction gas temp. = 20 °C , Subcooling = 0 K

Tolerance according EN12900

Performance data at 50 Hz, EN 12900 rating conditions, Superheat = 10 K
R448A

Cond. temp. in °C (tc)	Evaporating temperature in °C (to)								
	-30	-25	-20	-15	-10	-5	0	5	10

Cooling capacity in W

10	5 839	7 727	10 089	12 975	16 435	-	-	-	-
20	5 004	6 750	8 920	11 565	14 734	18 479	22 848	-	-
30	4 137	5 719	7 675	10 055	12 910	16 290	20 246	24 827	30 084
40	3 269	4 663	6 381	8 475	10 992	13 985	17 504	21 598	26 318
50	-	3 613	5 071	6 854	9 012	11 595	14 653	18 238	22 398
60	-	-	3 774	5 223	6 998	9 148	11 724	14 775	18 353

Power input in W

10	2 281	2 496	2 651	2 733	2 730	-	-	-	-
20	2 570	2 891	3 170	3 396	3 554	3 634	3 620	-	-
30	2 742	3 158	3 552	3 910	4 220	4 469	4 644	4 732	4 721
40	2 817	3 319	3 816	4 297	4 747	5 155	5 508	5 793	5 996
50	-	3 392	3 983	4 575	5 156	5 713	6 232	6 703	7 110
60	-	-	4 071	4 764	5 465	6 160	6 837	7 482	8 084

Current consumption in A

10	6.61	6.92	7.18	7.35	7.39	-	-	-	-
20	6.87	7.24	7.60	7.91	8.14	8.24	8.18	-	-
30	7.04	7.48	7.95	8.40	8.80	9.12	9.32	9.37	9.23
40	7.13	7.64	8.21	8.81	9.39	9.93	10.39	10.73	10.93
50	-	7.72	8.40	9.14	9.90	10.66	11.38	12.02	12.55
60	-	-	8.50	9.39	10.34	11.32	12.29	13.23	14.09

Mass flow in kg/h

10	112	147	188	238	296	-	-	-	-
20	105	139	181	230	288	355	433	-	-
30	95	129	170	219	276	342	419	506	606
40	84	117	157	204	260	325	400	486	584
50	-	103	141	187	241	304	377	460	555
60	-	-	124	167	218	278	349	429	522

Coefficient of performance (C.O.P.)

10	2.56	3.10	3.81	4.75	6.02	-	-	-	-
20	1.95	2.34	2.81	3.41	4.15	5.09	6.31	-	-
30	1.51	1.81	2.16	2.57	3.06	3.65	4.36	5.25	6.37
40	1.16	1.41	1.67	1.97	2.32	2.71	3.18	3.73	4.39
50	-	1.07	1.27	1.50	1.75	2.03	2.35	2.72	3.15
60	-	-	0.93	1.10	1.28	1.49	1.71	1.97	2.27

Nominal performance at to = -10 °C, tc = 45 °C

Cooling capacity	10 008	W
Power input	4 965	W
Current consumption	9.66	A
Mass flow	251	kg/h
C.O.P.	2.02	

Pressure switch settings

Maximum HP switch setting	27.7	bar(g)
Minimum LP switch setting	1	bar(g)
LP pump down setting	1.3	bar(g)

Sound power data

Sound power level	80	dB(A)
With acoustic hood	74	dB(A)

to: Evaporating temperature at dew point

tc: Condensing temperature at dew point

Rating conditions : Superheat = 10 K , Subcooling = 0 K

Tolerance according EN12900

Performance data at 50 Hz, EN 12900 rating conditions, Suction temp. = 20 °C
R449A

Cond. temp. in °C (tc)	Evaporating temperature in °C (to)								
	-30	-25	-20	-15	-10	-5	0	5	10

Cooling capacity in W

10	-	7 703	10 047	12 911	16 345	-	-	-	-
20	-	6 809	8 974	11 606	14 754	18 472	22 818	-	-
30	-	5 852	7 817	10 195	13 036	16 389	20 306	24 848	30 084
40	-	-	6 602	8 706	11 218	14 183	17 652	21 677	26 318
50	-	-	-	7 164	9 325	11 884	14 883	18 371	22 398
60	-	-	-	-	7 386	9 517	12 029	14 961	18 353

Power input in W

10	-	2 496	2 651	2 733	2 730	-	-	-	-
20	-	2 891	3 170	3 396	3 554	3 634	3 620	-	-
30	-	3 158	3 552	3 910	4 220	4 469	4 644	4 732	4 721
40	-	-	3 816	4 297	4 747	5 155	5 508	5 793	5 996
50	-	-	-	4 575	5 156	5 713	6 232	6 703	7 110
60	-	-	-	-	5 465	6 160	6 837	7 482	8 084

Current consumption in A

10	-	6.92	7.18	7.35	7.39	-	-	-	-
20	-	7.24	7.60	7.91	8.14	8.24	8.18	-	-
30	-	7.48	7.95	8.40	8.80	9.12	9.32	9.37	9.23
40	-	-	8.21	8.81	9.39	9.93	10.39	10.73	10.93
50	-	-	-	9.14	9.90	10.66	11.38	12.02	12.55
60	-	-	-	-	10.34	11.32	12.29	13.23	14.09

Mass flow in kg/h

10	-	129	168	216	274	-	-	-	-
20	-	122	162	209	267	336	418	-	-
30	-	114	152	199	256	324	405	502	616
40	-	-	141	187	242	309	388	482	595
50	-	-	-	171	224	289	366	458	567
60	-	-	-	-	204	265	339	428	533

Coefficient of performance (C.O.P.)

10	-	3.09	3.79	4.72	5.99	-	-	-	-
20	-	2.36	2.83	3.42	4.15	5.08	6.30	-	-
30	-	1.85	2.20	2.61	3.09	3.67	4.37	5.25	6.37
40	-	-	1.73	2.03	2.36	2.75	3.20	3.74	4.39
50	-	-	-	1.57	1.81	2.08	2.39	2.74	3.15
60	-	-	-	-	1.35	1.54	1.76	2.00	2.27

Nominal performance at to = -10 °C, tc = 45 °C

Cooling capacity	10 279	W
Power input	4 965	W
Current consumption	9.66	A
Mass flow	234	kg/h
C.O.P.	2.07	

Pressure switch settings

Maximum HP switch setting	27.7	bar(g)
Minimum LP switch setting	1	bar(g)
LP pump down setting	1.3	bar(g)

Sound power data

Sound power level	79	dB(A)
With acoustic hood	73	dB(A)

to: Evaporating temperature at dew point

tc: Condensing temperature at dew point

Rating conditions : Suction gas temp. = 20 °C , Subcooling = 0 K

Tolerance according EN12900

Performance data at 50 Hz, EN 12900 rating conditions, Superheat = 10 K
R449A

Cond. temp. in °C (tc)	Evaporating temperature in °C (to)								
	-30	-25	-20	-15	-10	-5	0	5	10

Cooling capacity in W

10	5 839	7 727	10 089	12 975	16 435	-	-	-	-
20	5 004	6 750	8 920	11 565	14 734	18 479	22 848	-	-
30	4 137	5 719	7 675	10 055	12 910	16 290	20 246	24 827	30 084
40	3 269	4 663	6 381	8 475	10 992	13 985	17 504	21 598	26 318
50	-	3 613	5 071	6 854	9 012	11 595	14 653	18 238	22 398
60	-	-	3 774	5 223	6 998	9 148	11 724	14 775	18 353

Power input in W

10	2 281	2 496	2 651	2 733	2 730	-	-	-	-
20	2 570	2 891	3 170	3 396	3 554	3 634	3 620	-	-
30	2 742	3 158	3 552	3 910	4 220	4 469	4 644	4 732	4 721
40	2 817	3 319	3 816	4 297	4 747	5 155	5 508	5 793	5 996
50	-	3 392	3 983	4 575	5 156	5 713	6 232	6 703	7 110
60	-	-	4 071	4 764	5 465	6 160	6 837	7 482	8 084

Current consumption in A

10	6.61	6.92	7.18	7.35	7.39	-	-	-	-
20	6.87	7.24	7.60	7.91	8.14	8.24	8.18	-	-
30	7.04	7.48	7.95	8.40	8.80	9.12	9.32	9.37	9.23
40	7.13	7.64	8.21	8.81	9.39	9.93	10.39	10.73	10.93
50	-	7.72	8.40	9.14	9.90	10.66	11.38	12.02	12.55
60	-	-	8.50	9.39	10.34	11.32	12.29	13.23	14.09

Mass flow in kg/h

10	115	150	192	242	301	-	-	-	-
20	107	142	184	234	293	361	440	-	-
30	97	132	174	223	281	349	426	515	616
40	86	120	161	209	266	332	408	495	595
50	-	106	145	191	246	311	385	470	567
60	-	-	127	171	224	285	357	439	533

Coefficient of performance (C.O.P.)

10	2.56	3.10	3.81	4.75	6.02	-	-	-	-
20	1.95	2.34	2.81	3.41	4.15	5.09	6.31	-	-
30	1.51	1.81	2.16	2.57	3.06	3.65	4.36	5.25	6.37
40	1.16	1.41	1.67	1.97	2.32	2.71	3.18	3.73	4.39
50	-	1.07	1.27	1.50	1.75	2.03	2.35	2.72	3.15
60	-	-	0.93	1.10	1.28	1.49	1.71	1.97	2.27

Nominal performance at to = -10 °C, tc = 45 °C

Cooling capacity	10 008	W
Power input	4 965	W
Current consumption	9.66	A
Mass flow	256	kg/h
C.O.P.	2.02	

Pressure switch settings

Maximum HP switch setting	27.7	bar(g)
Minimum LP switch setting	1	bar(g)
LP pump down setting	1.3	bar(g)

Sound power data

Sound power level	79	dB(A)
With acoustic hood	73	dB(A)

to: Evaporating temperature at dew point

tc: Condensing temperature at dew point

Rating conditions : Superheat = 10 K , Subcooling = 0 K

Tolerance according EN12900

Performance data at 50 Hz, EN 12900 rating conditions, Suction temp. = 20 °C
R452A

Cond. temp. in °C (tc)	Evaporating temperature in °C (to)								
	-30	-25	-20	-15	-10	-5	0	5	10

Cooling capacity in W

10	-	8 263	10 404	13 005	16 109	-	-	-	-
20	-	7 386	9 398	11 815	14 678	18 028	21 913	-	-
30	-	6 422	8 271	10 468	13 053	16 065	19 547	23 546	28 120
40	-	5 377	7 027	8 969	11 241	13 880	16 923	20 412	24 394
50	-	-	5 672	7 324	9 249	11 480	14 051	16 996	20 352
60	-	-	-	5 542	7 088	8 879	10 946	13 313	16 006

Power input in W

10	-	3 279	3 586	3 887	4 190	-	-	-	-
20	-	3 392	3 718	4 025	4 322	4 617	4 920	-	-
30	-	3 554	3 936	4 288	4 617	4 933	5 243	5 556	5 882
40	-	3 712	4 191	4 626	5 026	5 400	5 756	6 103	6 450
50	-	-	4 431	4 988	5 498	5 968	6 409	6 829	7 235
60	-	-	-	5 323	5 981	6 588	7 152	7 682	8 187

Current consumption in A

10	-	7.57	8.21	8.84	9.51	-	-	-	-
20	-	7.55	8.10	8.62	9.14	9.68	10.27	-	-
30	-	7.73	8.29	8.80	9.28	9.76	10.26	10.81	11.43
40	-	7.92	8.60	9.20	9.75	10.27	10.79	11.33	11.91
50	-	-	8.83	9.63	10.35	11.02	11.66	12.30	12.96
60	-	-	-	9.91	10.91	11.83	12.70	13.54	14.37

Mass flow in kg/h

10	-	167	212	267	332	-	-	-	-
20	-	163	209	264	329	407	500	-	-
30	-	156	202	257	322	399	491	599	728
40	-	145	191	245	309	385	475	582	708
50	-	-	175	228	291	365	453	557	680
60	-	-	-	206	267	338	423	524	643

Coefficient of performance (C.O.P.)

10	-	2.52	2.90	3.35	3.84	-	-	-	-
20	-	2.18	2.53	2.94	3.40	3.90	4.45	-	-
30	-	1.81	2.10	2.44	2.83	3.26	3.73	4.24	4.78
40	-	1.45	1.68	1.94	2.24	2.57	2.94	3.34	3.78
50	-	-	1.28	1.47	1.68	1.92	2.19	2.49	2.81
60	-	-	-	1.04	1.19	1.35	1.53	1.73	1.95

Nominal performance at to = -10 °C, tc = 45 °C

Cooling capacity	10 267	W
Power input	5 257	W
Current consumption	10.04	A
Mass flow	301	kg/h
C.O.P.	1.95	

Pressure switch settings

Maximum HP switch setting	27.7	bar(g)
Minimum LP switch setting	1	bar(g)
LP pump down setting	1.3	bar(g)

Sound power data

Sound power level	80	dB(A)
With acoustic hood	74	dB(A)

to: Evaporating temperature at dew point

tc: Condensing temperature at dew point

Rating conditions : Suction gas temp. = 20 °C , Subcooling = 0 K

Tolerance according EN12900

Performance data at 50 Hz, EN 12900 rating conditions, Superheat = 10 K
R452A

Cond. temp. in °C (tc)	Evaporating temperature in °C (to)								
	-30	-25	-20	-15	-10	-5	0	5	10

Cooling capacity in W

10	6 330	8 044	10 186	12 803	15 939	-	-	-	-
20	5 447	7 070	9 070	11 492	14 382	17 784	21 744	-	-
30	4 523	6 017	7 837	10 027	12 634	15 701	19 275	23 399	28 120
40	3 570	4 898	6 500	8 421	10 707	13 402	16 552	20 201	24 394
50	2 601	3 725	5 072	6 687	8 614	10 899	13 587	16 723	20 352
60	-	2 512	3 566	4 836	6 367	8 205	10 394	12 979	16 006

Power input in W

10	2 957	3 279	3 586	3 887	4 190	-	-	-	-
20	3 040	3 392	3 718	4 025	4 322	4 617	4 920	-	-
30	3 131	3 554	3 936	4 288	4 617	4 933	5 243	5 556	5 882
40	3 182	3 712	4 191	4 626	5 026	5 400	5 756	6 103	6 450
50	3 141	3 818	4 431	4 988	5 498	5 968	6 409	6 829	7 235
60	-	3 820	4 606	5 323	5 981	6 588	7 152	7 682	8 187

Current consumption in A

10	6.91	7.57	8.21	8.84	9.51	-	-	-	-
20	6.96	7.55	8.10	8.62	9.14	9.68	10.27	-	-
30	7.10	7.73	8.29	8.80	9.28	9.76	10.26	10.81	11.43
40	7.15	7.92	8.60	9.20	9.75	10.27	10.79	11.33	11.91
50	6.91	7.94	8.83	9.63	10.35	11.02	11.66	12.30	12.96
60	-	7.59	8.81	9.91	10.91	11.83	12.70	13.54	14.37

Mass flow in kg/h

10	154	195	243	299	365	-	-	-	-
20	148	190	239	296	362	439	526	-	-
30	139	182	231	288	354	430	517	616	728
40	127	169	218	275	340	415	501	598	708
50	110	152	200	256	320	394	477	573	680
60	-	130	177	231	294	365	446	539	643

Coefficient of performance (C.O.P.)

10	2.14	2.45	2.84	3.29	3.80	-	-	-	-
20	1.79	2.08	2.44	2.86	3.33	3.85	4.42	-	-
30	1.44	1.69	1.99	2.34	2.74	3.18	3.68	4.21	4.78
40	1.12	1.32	1.55	1.82	2.13	2.48	2.88	3.31	3.78
50	0.83	0.98	1.14	1.34	1.57	1.83	2.12	2.45	2.81
60	-	0.66	0.77	0.91	1.06	1.25	1.45	1.69	1.95

Nominal performance at to = -10 °C, tc = 45 °C

Cooling capacity	9 681	W
Power input	5 257	W
Current consumption	10.04	A
Mass flow	331	kg/h
C.O.P.	1.84	

Pressure switch settings

Maximum HP switch setting	27.7	bar(g)
Minimum LP switch setting	1	bar(g)
LP pump down setting	1.3	bar(g)

Sound power data

Sound power level	80	dB(A)
With acoustic hood	74	dB(A)

to: Evaporating temperature at dew point

tc: Condensing temperature at dew point

Rating conditions : Superheat = 10 K , Subcooling = 0 K

Tolerance according EN12900

Performance data at 60 Hz, EN 12900 rating conditions
R407C

Cond. temp. in °C (tc)	Evaporating temperature in °C (to)							
	-15	-10	-5	0	5	10	15	

Cooling capacity in W

35	9 314	12 344	16 014	20 433	25 715	31 972	39 316	-	-
40	8 588	11 475	14 916	19 021	23 902	29 669	36 436	-	-
45	7 783	10 564	13 814	17 641	22 158	27 474	33 701	-	-
50	-	9 571	12 665	16 252	20 442	25 345	31 071	-	-
55	-	-	11 432	14 814	18 713	23 239	28 500	-	-
60	-	-	-	13 287	16 929	21 113	25 946	-	-
65	-	-	-	11 632	15 050	18 925	23 362	-	-

Power input in W

35	4 498	4 996	5 456	5 891	6 313	6 734	7 165	-	-
40	4 678	5 252	5 776	6 261	6 719	7 162	7 602	-	-
45	4 803	5 474	6 081	6 635	7 149	7 635	8 104	-	-
50	-	5 643	6 353	6 996	7 587	8 135	8 653	-	-
55	-	-	6 574	7 328	8 014	8 645	9 232	-	-
60	-	-	-	7 611	8 413	9 146	9 823	-	-
65	-	-	-	7 828	8 766	9 622	10 408	-	-

Current consumption in A

35	7.60	8.14	8.67	9.17	9.60	9.96	10.22	-	-
40	7.79	8.41	9.02	9.60	10.13	10.59	10.95	-	-
45	7.95	8.65	9.35	10.03	10.66	11.22	11.70	-	-
50	-	8.86	9.66	10.44	11.19	11.87	12.46	-	-
55	-	-	9.94	10.83	11.70	12.50	13.23	-	-
60	-	-	-	11.19	12.18	13.12	14.00	-	-
65	-	-	-	11.50	12.63	13.72	14.74	-	-

Mass flow in kg/h

35	202	263	336	422	523	642	780	-	-
40	196	257	329	412	510	623	755	-	-
45	187	250	321	403	497	607	733	-	-
50	-	240	311	392	485	591	713	-	-
55	-	-	299	380	472	576	694	-	-
60	-	-	-	365	457	559	675	-	-
65	-	-	-	346	438	540	653	-	-

Coefficient of performance (C.O.P.)

35	2.07	2.47	2.93	3.47	4.07	4.75	5.49	-	-
40	1.84	2.18	2.58	3.04	3.56	4.14	4.79	-	-
45	1.62	1.93	2.27	2.66	3.10	3.60	4.16	-	-
50	-	1.70	1.99	2.32	2.69	3.12	3.59	-	-
55	-	-	1.74	2.02	2.34	2.69	3.09	-	-
60	-	-	-	1.75	2.01	2.31	2.64	-	-
65	-	-	-	1.49	1.72	1.97	2.24	-	-

Nominal performance at to = 5 °C, tc = 50 °C

Cooling capacity	20 442	W
Power input	7 587	W
Current consumption	11.19	A
Mass flow	485	kg/h
C.O.P.	2.69	

Pressure switch settings

Maximum HP switch setting	29.4	bar(g)
Minimum LP switch setting	1.4	bar(g)
LP pump down setting	1.7	bar(g)

Sound power data

Sound power level	85	dB(A)
With acoustic hood	79	dB(A)

to: Evaporating temperature at dew point

tc: Condensing temperature at dew point

Rating conditions : Superheat = 10 K , Subcooling = 0 K

Tolerance according EN12900

Performance data at 60 Hz, ARI rating conditions
R407C

Cond. temp. in °C (tc)	Evaporating temperature in °C (to)							
	-15	-10	-5	0	5	10	15	

Cooling capacity in W

35	10 025	13 271	17 195	21 916	27 551	34 219	42 037	-	-
40	9 294	12 402	16 100	20 504	25 734	31 907	39 140	-	-
45	8 476	11 488	14 999	19 128	23 993	29 712	36 402	-	-
50	-	10 485	13 851	17 745	22 285	27 590	33 776	-	-
55	-	-	12 609	16 309	20 566	25 497	31 221	-	-
60	-	-	-	14 778	18 791	23 390	28 692	-	-
65	-	-	-	13 108	16 919	21 225	26 145	-	-

Power input in W

35	4 498	4 996	5 456	5 891	6 313	6 734	7 165	-	-
40	4 678	5 252	5 776	6 261	6 719	7 162	7 602	-	-
45	4 803	5 474	6 081	6 635	7 149	7 635	8 104	-	-
50	-	5 643	6 353	6 996	7 587	8 135	8 653	-	-
55	-	-	6 574	7 328	8 014	8 645	9 232	-	-
60	-	-	-	7 611	8 413	9 146	9 823	-	-
65	-	-	-	7 828	8 766	9 622	10 408	-	-

Current consumption in A

35	7.60	8.14	8.67	9.17	9.60	9.96	10.22	-	-
40	7.79	8.41	9.02	9.60	10.13	10.59	10.95	-	-
45	7.95	8.65	9.35	10.03	10.66	11.22	11.70	-	-
50	-	8.86	9.66	10.44	11.19	11.87	12.46	-	-
55	-	-	9.94	10.83	11.70	12.50	13.23	-	-
60	-	-	-	11.19	12.18	13.12	14.00	-	-
65	-	-	-	11.50	12.63	13.72	14.74	-	-

Mass flow in kg/h

35	201	262	334	420	520	638	775	-	-
40	195	256	327	410	507	620	751	-	-
45	186	248	319	400	495	603	729	-	-
50	-	238	310	390	482	588	709	-	-
55	-	-	297	378	469	573	690	-	-
60	-	-	-	363	454	556	670	-	-
65	-	-	-	344	435	537	649	-	-

Coefficient of performance (C.O.P.)

35	2.23	2.66	3.15	3.72	4.36	5.08	5.87	-	-
40	1.99	2.36	2.79	3.28	3.83	4.46	5.15	-	-
45	1.76	2.10	2.47	2.88	3.36	3.89	4.49	-	-
50	-	1.86	2.18	2.54	2.94	3.39	3.90	-	-
55	-	-	1.92	2.23	2.57	2.95	3.38	-	-
60	-	-	-	1.94	2.23	2.56	2.92	-	-
65	-	-	-	1.67	1.93	2.21	2.51	-	-

Nominal performance at to = 7.2 °C, tc = 54.4 °C

Cooling capacity	22 871	W
Power input	8 242	W
Current consumption	11.99	A
Mass flow	515	kg/h
C.O.P.	2.77	

Pressure switch settings

Maximum HP switch setting	29.4	bar(g)
Minimum LP switch setting	1.4	bar(g)
LP pump down setting	1.7	bar(g)

Sound power data

Sound power level	85	dB(A)
With acoustic hood	79	dB(A)

to: Evaporating temperature at dew point

tc: Condensing temperature at dew point

Rating conditions : Superheat = 11.1 K , Subcooling = 8.3 K

Tolerance according EN12900

Performance data at 60 Hz, EN 12900 rating conditions

R134a

Cond. temp. in °C (tc)	Evaporating temperature in °C (to)							
	-25	-20	-10	-5	0	5	10	15

Cooling capacity in W

35	3 367	4 689	8 373	10 884	13 942	17 621	21 996	27 143	33 136
40	2 944	4 213	7 705	10 077	12 968	16 453	20 605	25 500	31 213
45	2 522	3 734	7 028	9 260	11 982	15 269	19 195	23 836	29 267
50	2 103	3 256	6 348	8 437	10 987	14 073	17 772	22 156	27 302
55	-	-	5 668	7 610	9 986	12 870	16 337	20 463	25 322
60	-	-	-	6 784	8 983	11 662	14 896	18 760	23 329
65	-	-	-	-	7 982	10 453	13 451	17 051	21 327
75	-	-	-	-	-	-	10 567	13 630	17 314

Power input in W

35	2 286	2 658	3 316	3 603	3 863	4 097	4 305	4 488	4 647
40	2 250	2 666	3 410	3 740	4 042	4 317	4 567	4 790	4 989
45	2 207	2 672	3 515	3 892	4 242	4 565	4 860	5 130	5 374
50	2 141	2 662	3 613	4 044	4 447	4 822	5 170	5 491	5 787
55	-	-	3 690	4 181	4 642	5 076	5 481	5 860	6 211
60	-	-	-	4 286	4 812	5 309	5 778	6 219	6 633
65	-	-	-	-	4 940	5 506	6 044	6 554	7 035
75	-	-	-	-	-	-	6 424	7 087	7 721

Current consumption in A

35	6.54	6.75	7.28	7.56	7.84	8.09	8.30	8.45	8.52
40	6.61	6.84	7.41	7.72	8.03	8.31	8.56	8.75	8.87
45	6.63	6.89	7.52	7.87	8.22	8.55	8.85	9.09	9.27
50	6.60	6.89	7.62	8.01	8.42	8.80	9.16	9.47	9.72
55	-	-	7.67	8.13	8.59	9.05	9.48	9.86	10.19
60	-	-	-	8.21	8.75	9.28	9.79	10.26	10.67
65	-	-	-	-	8.86	9.48	10.09	10.65	11.17
75	-	-	-	-	-	-	10.59	11.38	12.13

Mass flow in kg/h

35	85	117	200	253	317	393	481	584	703
40	79	111	193	246	310	385	472	575	692
45	72	104	186	239	302	376	463	564	681
50	64	96	178	230	292	366	452	552	668
55	-	-	169	221	282	355	440	540	654
60	-	-	-	210	271	343	428	526	639
65	-	-	-	-	260	331	414	511	623
75	-	-	-	-	-	-	383	478	587

Coefficient of performance (C.O.P.)

35	1.47	1.76	2.53	3.02	3.61	4.30	5.11	6.05	7.13
40	1.31	1.58	2.26	2.69	3.21	3.81	4.51	5.32	6.26
45	1.14	1.40	2.00	2.38	2.82	3.35	3.95	4.65	5.45
50	0.98	1.22	1.76	2.09	2.47	2.92	3.44	4.03	4.72
55	-	-	1.54	1.82	2.15	2.54	2.98	3.49	4.08
60	-	-	-	1.58	1.87	2.20	2.58	3.02	3.52
65	-	-	-	-	1.62	1.90	2.23	2.60	3.03
75	-	-	-	-	-	-	1.64	1.92	2.24

Nominal performance at to = 5 °C, tc = 50 °C

Cooling capacity	14 073	W
Power input	4 822	W
Current consumption	8.80	A
Mass flow	366	kg/h
C.O.P.	2.92	

Pressure switch settings

Maximum HP switch setting	20.2	bar(g)
Minimum LP switch setting	0.1	bar(g)
LP pump down setting	0.4	bar(g)

Sound power data

Sound power level	0	dB(A)
With acoustic hood	0	dB(A)

to: Evaporating temperature at dew point

tc: Condensing temperature at dew point

Rating conditions : Superheat = 10 K , Subcooling = 0 K

Tolerance according EN12900

Danfoss can accept no responsibility for possible errors in catalogues, brochures and other printed material. Danfoss reserves the right to alter its products without notice. This also applies to products already on order provided that such alternations can be made without subsequential changes being necessary in specifications already agreed. All trademarks in this material are property of the respective companies. Danfoss, the Danfoss logotype and Maneurop are trademarks of Danfoss A/S. All rights reserved.

Performance data at 60 Hz, ARI rating conditions
R134a

Cond. temp. in °C (tc)	Evaporating temperature in °C (to)							
	-25	-20	-10	-5	0	5	10	15

Cooling capacity in W

35	3 660	5 088	9 053	11 750	15 027	18 964	23 639	29 130	35 514
40	3 219	4 597	8 374	10 934	14 046	17 790	22 245	27 488	33 598
45	2 776	4 101	7 685	10 105	13 050	16 599	20 830	25 824	31 656
50	-	3 603	6 989	9 267	12 042	15 393	19 400	24 141	29 695
55	-	-	6 291	8 424	11 027	14 178	17 957	22 444	27 718
60	-	-	-	7 580	10 007	12 956	16 507	20 738	25 730
65	-	-	-	-	-	11 733	15 053	19 028	23 738
75	-	-	-	-	-	-	12 159	15 621	19 769

Power input in W

35	2 286	2 658	3 316	3 603	3 863	4 097	4 305	4 488	4 647
40	2 250	2 666	3 410	3 740	4 042	4 317	4 567	4 790	4 989
45	2 207	2 672	3 515	3 892	4 242	4 565	4 860	5 130	5 374
50	-	2 662	3 613	4 044	4 447	4 822	5 170	5 491	5 787
55	-	-	3 690	4 181	4 642	5 076	5 481	5 860	6 211
60	-	-	-	4 286	4 812	5 309	5 778	6 219	6 633
65	-	-	-	-	-	5 506	6 044	6 554	7 035
75	-	-	-	-	-	-	6 424	7 087	7 721

Current consumption in A

35	6.54	6.75	7.28	7.56	7.84	8.09	8.30	8.45	8.52
40	6.61	6.84	7.41	7.72	8.03	8.31	8.56	8.75	8.87
45	6.63	6.89	7.52	7.87	8.22	8.55	8.85	9.09	9.27
50	-	6.89	7.62	8.01	8.42	8.80	9.16	9.47	9.72
55	-	-	7.67	8.13	8.59	9.05	9.48	9.86	10.19
60	-	-	-	8.21	8.75	9.28	9.79	10.26	10.67
65	-	-	-	-	-	9.48	10.09	10.65	11.17
75	-	-	-	-	-	-	10.59	11.38	12.13

Mass flow in kg/h

35	85	116	199	252	316	391	479	581	699
40	78	110	192	245	308	383	470	571	688
45	71	103	185	238	300	374	460	561	677
50	-	96	177	229	291	364	450	549	664
55	-	-	168	220	281	353	438	537	650
60	-	-	-	209	270	342	425	523	635
65	-	-	-	-	-	329	412	508	619
75	-	-	-	-	-	-	381	475	584

Coefficient of performance (C.O.P.)

35	1.60	1.91	2.73	3.26	3.89	4.63	5.49	6.49	7.64
40	1.43	1.72	2.46	2.92	3.47	4.12	4.87	5.74	6.73
45	1.26	1.53	2.19	2.60	3.08	3.64	4.29	5.03	5.89
50	-	1.35	1.93	2.29	2.71	3.19	3.75	4.40	5.13
55	-	-	1.70	2.02	2.38	2.79	3.28	3.83	4.46
60	-	-	-	1.77	2.08	2.44	2.86	3.33	3.88
65	-	-	-	-	-	2.13	2.49	2.90	3.37
75	-	-	-	-	-	-	1.89	2.20	2.56

Nominal performance at to = 7.2 °C, tc = 54.4 °C

Cooling capacity	15 917	W
Power input	5 225	W
Current consumption	9.21	A
Mass flow	390	kg/h
C.O.P.	3.05	

Pressure switch settings

Maximum HP switch setting	20.2	bar(g)
Minimum LP switch setting	0.1	bar(g)
LP pump down setting	0.4	bar(g)

Sound power data

Sound power level	0	dB(A)
With acoustic hood	0	dB(A)

to: Evaporating temperature at dew point

tc: Condensing temperature at dew point

Rating conditions : Superheat = 11.1 K , Subcooling = 8.3 K

Tolerance according EN12900

Danfoss can accept no responsibility for possible errors in catalogues, brochures and other printed material. Danfoss reserves the right to alter its products without notice. This also applies to products already on order provided that such alternations can be made without subsequential changes being necessary in specifications already agreed. All trademarks in this material are property of the respective companies. Danfoss, the Danfoss logotype and Maneurop are trademarks of Danfoss A/S. All rights reserved.

Performance data at 60 Hz, EN 12900 rating conditions
R404A

Cond. temp. in °C (tc)	Evaporating temperature in °C (to)							
	-30	-25	-20	-15	-10	-5	0	5

Cooling capacity in W

30	6 046	8 094	10 586	13 578	17 129	21 297	26 141	31 719	38 089
35	5 342	7 267	9 600	12 399	15 722	19 627	24 172	29 415	35 416
40	4 640	6 428	8 589	11 181	14 262	17 890	22 122	27 019	32 636
45	3 945	5 583	7 559	9 930	12 756	16 093	20 000	24 535	29 756
50	3 263	4 737	6 514	8 652	11 209	14 242	17 810	21 971	26 782
55	-	3 898	5 463	7 354	9 628	12 344	15 559	19 331	23 719
60	-	3 071	4 410	6 040	8 019	10 403	13 252	16 623	20 573

Power input in W

30	3 992	4 621	5 193	5 718	6 203	6 658	7 090	7 508	7 920
35	4 056	4 764	5 411	6 003	6 550	7 061	7 542	8 004	8 453
40	4 068	4 863	5 589	6 256	6 871	7 444	7 981	8 492	8 986
45	4 018	4 905	5 719	6 466	7 156	7 796	8 396	8 964	9 507
50	3 895	4 882	5 788	6 623	7 393	8 109	8 777	9 407	10 007
55	-	4 783	5 788	6 716	7 574	8 370	9 114	9 813	10 475
60	-	4 597	5 708	6 736	7 687	8 571	9 396	10 170	10 901

Current consumption in A

30	6.89	7.74	8.48	9.14	9.75	10.36	10.99	11.68	12.47
35	6.98	7.87	8.65	9.35	10.01	10.65	11.33	12.07	12.90
40	7.02	7.97	8.81	9.57	10.29	11.00	11.74	12.53	13.43
45	6.99	8.02	8.94	9.78	10.58	11.37	12.18	13.06	14.03
50	6.86	7.99	9.01	9.94	10.84	11.73	12.64	13.61	14.68
55	-	7.85	8.99	10.04	11.05	12.05	13.08	14.17	15.36
60	-	7.59	8.85	10.04	11.19	12.32	13.48	14.71	16.03

Mass flow in kg/h

30	190	249	318	397	488	593	712	847	1 000
35	181	240	308	387	478	583	701	836	987
40	170	229	297	376	466	570	688	821	971
45	159	217	284	362	452	554	671	803	952
50	146	204	270	347	435	537	652	783	930
55	-	189	254	330	417	517	630	759	905
60	-	173	237	311	396	494	606	733	876

Coefficient of performance (C.O.P.)

30	1.51	1.75	2.04	2.37	2.76	3.20	3.69	4.22	4.81
35	1.32	1.53	1.77	2.07	2.40	2.78	3.20	3.68	4.19
40	1.14	1.32	1.54	1.79	2.08	2.40	2.77	3.18	3.63
45	0.98	1.14	1.32	1.54	1.78	2.06	2.38	2.74	3.13
50	0.84	0.97	1.13	1.31	1.52	1.76	2.03	2.34	2.68
55	-	0.82	0.94	1.09	1.27	1.47	1.71	1.97	2.26
60	-	0.67	0.77	0.90	1.04	1.21	1.41	1.63	1.89

Nominal performance at to = -10 °C, tc = 45 °C

Cooling capacity	12 756	W
Power input	7 156	W
Current consumption	10.58	A
Mass flow	452	kg/h
C.O.P.	1.78	

Pressure switch settings

Maximum HP switch setting	27.7	bar(g)
Minimum LP switch setting	1	bar(g)
LP pump down setting	1.3	bar(g)

Sound power data

Sound power level	84	dB(A)
With acoustic hood	78	dB(A)

to: Evaporating temperature at dew point

tc: Condensing temperature at dew point

Rating conditions : Superheat = 10 K , Subcooling = 0 K

Tolerance according EN12900

Performance data at 60 Hz, ARI rating conditions
R404A

Cond. temp. in °C (tc)	Evaporating temperature in °C (to)							
	-30	-25	-20	-15	-10	-5	0	5

Cooling capacity in W

30	6 730	8 986	11 721	14 998	18 877	23 420	28 687	34 739	41 638
35	6 011	8 151	10 735	13 826	17 484	21 772	26 750	32 480	39 023
40	5 290	7 300	9 720	12 611	16 036	20 056	24 733	30 128	36 304
45	4 572	6 441	8 683	11 362	14 540	18 280	22 644	27 694	33 491
50	3 866	5 579	7 631	10 086	13 006	16 454	20 495	25 189	30 600
55	-	4 723	6 574	8 792	11 444	14 593	18 302	22 634	27 653
60	-	3 882	5 522	7 498	9 875	12 719	16 095	20 066	24 696

Power input in W

30	3 992	4 621	5 193	5 718	6 203	6 658	7 090	7 508	7 920
35	4 056	4 764	5 411	6 003	6 550	7 061	7 542	8 004	8 453
40	4 068	4 863	5 589	6 256	6 871	7 444	7 981	8 492	8 986
45	4 018	4 905	5 719	6 466	7 156	7 796	8 396	8 964	9 507
50	3 895	4 882	5 788	6 623	7 393	8 109	8 777	9 407	10 007
55	-	4 783	5 788	6 716	7 574	8 370	9 114	9 813	10 475
60	-	4 597	5 708	6 736	7 687	8 571	9 396	10 170	10 901

Current consumption in A

30	6.89	7.74	8.48	9.14	9.75	10.36	10.99	11.68	12.47
35	6.98	7.87	8.65	9.35	10.01	10.65	11.33	12.07	12.90
40	7.02	7.97	8.81	9.57	10.29	11.00	11.74	12.53	13.43
45	6.99	8.02	8.94	9.78	10.58	11.37	12.18	13.06	14.03
50	6.86	7.99	9.01	9.94	10.84	11.73	12.64	13.61	14.68
55	-	7.85	8.99	10.04	11.05	12.05	13.08	14.17	15.36
60	-	7.59	8.85	10.04	11.19	12.32	13.48	14.71	16.03

Mass flow in kg/h

30	189	248	316	395	486	590	708	842	993
35	180	238	306	385	476	579	697	830	980
40	169	228	295	374	463	566	683	816	965
45	158	216	283	360	449	551	667	798	946
50	145	202	269	345	433	533	648	778	924
55	-	188	253	328	414	513	626	754	899
60	-	172	235	309	394	491	602	728	870

Coefficient of performance (C.O.P.)

30	1.69	1.94	2.26	2.62	3.04	3.52	4.05	4.63	5.26
35	1.48	1.71	1.98	2.30	2.67	3.08	3.55	4.06	4.62
40	1.30	1.50	1.74	2.02	2.33	2.69	3.10	3.55	4.04
45	1.14	1.31	1.52	1.76	2.03	2.34	2.70	3.09	3.52
50	0.99	1.14	1.32	1.52	1.76	2.03	2.34	2.68	3.06
55	-	0.99	1.14	1.31	1.51	1.74	2.01	2.31	2.64
60	-	0.84	0.97	1.11	1.28	1.48	1.71	1.97	2.27

Nominal performance at to = -10 °C, tc = 45 °C

Cooling capacity	14 540	W
Power input	7 156	W
Current consumption	10.58	A
Mass flow	449	kg/h
C.O.P.	2.03	

Pressure switch settings

Maximum HP switch setting	27.7	bar(g)
Minimum LP switch setting	1	bar(g)
LP pump down setting	1.3	bar(g)

Sound power data

Sound power level	84	dB(A)
With acoustic hood	78	dB(A)

to: Evaporating temperature at dew point

tc: Condensing temperature at dew point

Rating conditions : Superheat = 11.1 K , Subcooling = 8.3 K

Tolerance according EN12900

Performance data at 60 Hz, EN 12900 rating conditions
R407A

Cond. temp. in °C (tc)	Evaporating temperature in °C (to)							
	-30	-25	-20	-15	-10	-5	0	5

Cooling capacity in W

30	4 344	6 313	8 704	11 574	14 984	18 992	23 658	29 042	35 203
35	3 746	5 622	7 888	10 603	13 827	17 619	22 038	27 144	32 996
40	3 147	4 924	7 060	9 614	12 647	16 217	20 384	25 206	30 744
45	2 557	4 229	6 229	8 617	11 453	14 795	18 703	23 237	28 455
50	-	3 545	5 403	7 620	10 253	13 361	17 005	21 244	26 137
55	-	-	4 592	6 630	9 055	11 925	15 299	19 237	23 799
60	-	-	-	5 658	7 868	10 493	13 592	17 224	21 449

Power input in W

30	2 870	3 486	4 063	4 603	5 105	5 569	5 995	6 381	6 730
35	2 833	3 513	4 153	4 754	5 315	5 836	6 316	6 757	7 156
40	2 767	3 517	4 225	4 893	5 518	6 102	6 644	7 143	7 600
45	2 670	3 496	4 278	5 018	5 714	6 366	6 974	7 539	8 059
50	-	3 448	4 311	5 128	5 900	6 627	7 307	7 943	8 532
55	-	-	4 321	5 221	6 075	6 882	7 641	8 353	9 016
60	-	-	-	5 297	6 239	7 131	7 974	8 768	9 512

Current consumption in A

30	6.77	7.29	7.82	8.37	8.90	9.41	9.86	10.25	10.54
35	6.75	7.31	7.90	8.50	9.10	9.67	10.20	10.67	11.05
40	6.73	7.35	7.99	8.66	9.33	9.98	10.59	11.14	11.62
45	6.71	7.38	8.09	8.82	9.57	10.30	11.00	11.64	12.22
50	-	7.38	8.16	8.97	9.80	10.62	11.41	12.16	12.84
55	-	-	8.19	9.09	10.00	10.92	11.81	12.66	13.46
60	-	-	-	9.15	10.16	11.17	12.17	13.14	14.05

Mass flow in kg/h

30	103	148	200	260	331	412	505	611	732
35	94	138	190	251	321	402	494	599	718
40	84	128	180	240	310	390	481	586	704
45	73	117	169	228	297	377	467	571	687
50	-	105	156	216	284	362	452	554	670
55	-	-	143	202	269	347	436	536	651
60	-	-	-	187	254	330	418	517	630

Coefficient of performance (C.O.P.)

30	1.51	1.81	2.14	2.51	2.93	3.41	3.95	4.55	5.23
35	1.32	1.60	1.90	2.23	2.60	3.02	3.49	4.02	4.61
40	1.14	1.40	1.67	1.97	2.29	2.66	3.07	3.53	4.05
45	0.96	1.21	1.46	1.72	2.00	2.32	2.68	3.08	3.53
50	-	1.03	1.25	1.49	1.74	2.02	2.33	2.67	3.06
55	-	-	1.06	1.27	1.49	1.73	2.00	2.30	2.64
60	-	-	-	1.07	1.26	1.47	1.70	1.96	2.26

Nominal performance at to = -10 °C, tc = 45 °C

Cooling capacity	11 453	W
Power input	5 714	W
Current consumption	9.57	A
Mass flow	297	kg/h
C.O.P.	2.00	

Pressure switch settings

Maximum HP switch setting	25.8	bar(g)
Minimum LP switch setting	0.9	bar(g)
LP pump down setting	1.2	bar(g)

Sound power data

Sound power level	81	dB(A)
With acoustic hood	75	dB(A)

to: Evaporating temperature at dew point

tc: Condensing temperature at dew point

Rating conditions : Superheat = 10 K , Subcooling = 0 K

Tolerance according EN12900

Performance data at 60 Hz, ARI rating conditions
R407A

Cond. temp. in °C (tc)	Evaporating temperature in °C (to)								
	-30	-25	-20	-15	-10	-5	0	5	10

Cooling capacity in W

30	4 698	6 818	9 386	12 465	16 116	20 402	25 385	31 126	37 688
35	4 075	6 106	8 554	11 481	14 950	19 024	23 764	29 234	35 494
40	3 448	5 384	7 706	10 476	13 758	17 614	22 107	27 299	33 252
45	2 824	4 661	6 851	9 459	12 549	16 182	20 422	25 332	30 975
50	-	3 944	5 999	8 440	11 331	14 737	18 721	23 344	28 672
55	-	-	5 157	7 426	10 116	13 291	17 013	21 347	26 357
60	-	-	-	6 429	8 914	11 854	15 313	19 356	24 047

Power input in W

30	2 870	3 486	4 063	4 603	5 105	5 569	5 995	6 381	6 730
35	2 833	3 513	4 153	4 754	5 315	5 836	6 316	6 757	7 156
40	2 767	3 517	4 225	4 893	5 518	6 102	6 644	7 143	7 600
45	2 670	3 496	4 278	5 018	5 714	6 366	6 974	7 539	8 059
50	-	3 448	4 311	5 128	5 900	6 627	7 307	7 943	8 532
55	-	-	4 321	5 221	6 075	6 882	7 641	8 353	9 016
60	-	-	-	5 297	6 239	7 131	7 974	8 768	9 512

Current consumption in A

30	6.77	7.29	7.82	8.37	8.90	9.41	9.86	10.25	10.54
35	6.75	7.31	7.90	8.50	9.10	9.67	10.20	10.67	11.05
40	6.73	7.35	7.99	8.66	9.33	9.98	10.59	11.14	11.62
45	6.71	7.38	8.09	8.82	9.57	10.30	11.00	11.64	12.22
50	-	7.38	8.16	8.97	9.80	10.62	11.41	12.16	12.84
55	-	-	8.19	9.09	10.00	10.92	11.81	12.66	13.46
60	-	-	-	9.15	10.16	11.17	12.17	13.14	14.05

Mass flow in kg/h

30	103	147	199	259	329	410	502	608	727
35	93	138	189	250	319	399	491	596	714
40	83	128	179	239	308	388	479	582	699
45	72	116	168	227	296	375	465	567	683
50	-	105	155	214	282	360	450	551	666
55	-	-	142	201	268	345	433	533	647
60	-	-	-	186	252	328	415	514	626

Coefficient of performance (C.O.P.)

30	1.64	1.96	2.31	2.71	3.16	3.66	4.23	4.88	5.60
35	1.44	1.74	2.06	2.42	2.81	3.26	3.76	4.33	4.96
40	1.25	1.53	1.82	2.14	2.49	2.89	3.33	3.82	4.38
45	1.06	1.33	1.60	1.89	2.20	2.54	2.93	3.36	3.84
50	-	1.14	1.39	1.65	1.92	2.22	2.56	2.94	3.36
55	-	-	1.19	1.42	1.67	1.93	2.23	2.56	2.92
60	-	-	-	1.21	1.43	1.66	1.92	2.21	2.53

Nominal performance at to = -10 °C, tc = 45 °C

Cooling capacity	12 549	W
Power input	5 714	W
Current consumption	9.57	A
Mass flow	296	kg/h
C.O.P.	2.20	

Pressure switch settings

Maximum HP switch setting	25.8	bar(g)
Minimum LP switch setting	0.9	bar(g)
LP pump down setting	1.2	bar(g)

Sound power data

Sound power level	81	dB(A)
With acoustic hood	75	dB(A)

to: Evaporating temperature at dew point

tc: Condensing temperature at dew point

Rating conditions : Superheat = 11.1 K , Subcooling = 8.3 K

Tolerance according EN12900

Performance data at 60 Hz, EN 12900 rating conditions
R407F

Cond. temp. in °C (tc)	Evaporating temperature in °C (to)								
	-30	-25	-20	-15	-10	-5	0	5	10

Cooling capacity in W

30	-	6 866	9 562	12 811	16 681	21 243	26 566	32 718	39 770
35	-	5 955	8 417	11 379	14 910	19 079	23 957	29 612	36 114
40	-	5 193	7 464	10 182	13 417	17 237	21 714	26 915	32 910
45	-	4 543	6 666	9 184	12 165	15 681	19 799	24 589	30 121
50	-	-	5 987	8 348	11 120	14 373	18 176	22 599	27 711
55	-	-	-	7 638	10 243	13 277	16 809	20 907	25 642
60	-	-	-	-	-	-	-	-	-

Power input in W

30	-	3 712	4 304	4 864	5 377	5 826	6 196	6 470	6 632
35	-	3 753	4 399	5 024	5 611	6 145	6 609	6 989	7 267
40	-	3 801	4 493	5 173	5 827	6 438	6 990	7 467	7 853
45	-	3 875	4 604	5 333	6 046	6 726	7 357	7 924	8 410
50	-	-	4 753	5 523	6 286	7 027	7 730	8 379	8 958
55	-	-	-	5 762	6 568	7 363	8 129	8 852	9 516
60	-	-	-	-	-	-	-	-	-

Current consumption in A

30	-	7.30	7.87	8.46	9.04	9.56	10.01	10.35	10.55
35	-	7.41	8.03	8.68	9.32	9.92	10.46	10.89	11.21
40	-	7.48	8.15	8.86	9.58	10.26	10.89	11.44	11.87
45	-	7.52	8.26	9.04	9.84	10.61	11.35	12.01	12.56
50	-	-	8.38	9.23	10.12	11.00	11.84	12.62	13.30
55	-	-	-	9.47	10.45	11.43	12.39	13.30	14.12
60	-	-	-	-	-	-	-	-	-

Mass flow in kg/h

30	-	142	195	257	330	414	512	623	749
35	-	129	180	239	309	389	482	588	709
40	-	119	168	225	292	369	458	560	676
45	-	110	158	214	279	354	440	538	650
50	-	-	151	206	270	343	427	523	632
55	-	-	-	202	265	338	420	514	620
60	-	-	-	-	-	-	-	-	-

Coefficient of performance (C.O.P.)

30	-	1.85	2.22	2.63	3.10	3.65	4.29	5.06	6.00
35	-	1.59	1.91	2.27	2.66	3.11	3.62	4.24	4.97
40	-	1.37	1.66	1.97	2.30	2.68	3.11	3.60	4.19
45	-	1.17	1.45	1.72	2.01	2.33	2.69	3.10	3.58
50	-	-	1.26	1.51	1.77	2.05	2.35	2.70	3.09
55	-	-	-	1.33	1.56	1.80	2.07	2.36	2.69
60	-	-	-	-	-	-	-	-	-

Nominal performance at to = -10 °C, tc = 45 °C

Cooling capacity	12 165	W
Power input	6 046	W
Current consumption	9.84	A
Mass flow	279	kg/h
C.O.P.	2.01	

Pressure switch settings

Maximum HP switch setting	24	bar(g)
Minimum LP switch setting	1	bar(g)
LP pump down setting	1.26	bar(g)

Sound power data

Sound power level	81	dB(A)
With acoustic hood	75	dB(A)

to: Evaporating temperature at dew point

tc: Condensing temperature at dew point

Rating conditions : Superheat = 10 K , Subcooling = 0 K

Tolerance according EN12900

Performance data at 60 Hz, ARI rating conditions
R407F

Cond. temp. in °C (tc)	Evaporating temperature in °C (to)								
	-30	-25	-20	-15	-10	-5	0	5	10

Cooling capacity in W

30	-	7 359	10 238	13 702	17 825	22 679	28 335	34 868	42 348
35	-	6 412	9 053	12 225	16 001	20 455	25 659	31 687	38 609
40	-	5 622	8 070	10 995	14 471	18 571	23 369	28 936	35 347
45	-	4 950	7 253	9 978	13 200	16 992	21 429	26 583	32 527
50	-	-	6 564	9 137	12 152	15 684	19 807	24 595	30 121
55	-	-	-	8 438	11 297	14 618	18 476	22 947	28 104
60	-	-	-	-	-	-	-	-	-

Power input in W

30	-	3 712	4 304	4 864	5 377	5 826	6 196	6 470	6 632
35	-	3 753	4 399	5 024	5 611	6 145	6 609	6 989	7 267
40	-	3 801	4 493	5 173	5 827	6 438	6 990	7 467	7 853
45	-	3 875	4 604	5 333	6 046	6 726	7 357	7 924	8 410
50	-	-	4 753	5 523	6 286	7 027	7 730	8 379	8 958
55	-	-	-	5 762	6 568	7 363	8 129	8 852	9 516
60	-	-	-	-	-	-	-	-	-

Current consumption in A

30	-	7.30	7.87	8.46	9.04	9.56	10.01	10.35	10.55
35	-	7.41	8.03	8.68	9.32	9.92	10.46	10.89	11.21
40	-	7.48	8.15	8.86	9.58	10.26	10.89	11.44	11.87
45	-	7.52	8.26	9.04	9.84	10.61	11.35	12.01	12.56
50	-	-	8.38	9.23	10.12	11.00	11.84	12.62	13.30
55	-	-	-	9.47	10.45	11.43	12.39	13.30	14.12
60	-	-	-	-	-	-	-	-	-

Mass flow in kg/h

30	-	141	194	256	328	412	508	619	744
35	-	129	179	238	307	387	479	584	704
40	-	118	167	224	290	367	455	557	672
45	-	109	157	213	277	352	437	535	646
50	-	-	150	205	268	341	425	520	628
55	-	-	-	201	264	336	418	511	616
60	-	-	-	-	-	-	-	-	-

Coefficient of performance (C.O.P.)

30	-	1.98	2.38	2.82	3.31	3.89	4.57	5.39	6.38
35	-	1.71	2.06	2.43	2.85	3.33	3.88	4.53	5.31
40	-	1.48	1.80	2.13	2.48	2.88	3.34	3.88	4.50
45	-	1.28	1.58	1.87	2.18	2.53	2.91	3.35	3.87
50	-	-	1.38	1.65	1.93	2.23	2.56	2.94	3.36
55	-	-	-	1.46	1.72	1.99	2.27	2.59	2.95
60	-	-	-	-	-	-	-	-	-

Nominal performance at to = -10 °C, tc = 45 °C

Cooling capacity	13 200	W
Power input	6 046	W
Current consumption	9.84	A
Mass flow	277	kg/h
C.O.P.	2.18	

Pressure switch settings

Maximum HP switch setting	24	bar(g)
Minimum LP switch setting	1	bar(g)
LP pump down setting	1.26	bar(g)

Sound power data

Sound power level	81	dB(A)
With acoustic hood	75	dB(A)

to: Evaporating temperature at dew point

tc: Condensing temperature at dew point

Rating conditions : Superheat = 11.1 K , Subcooling = 8.3 K

Tolerance according EN12900

Performance data at 60 Hz, EN 12900 rating conditions
R134a

Cond. temp. in °C (tc)	Evaporating temperature in °C (to)							
	-25	-20	-10	-5	0	5	10	15

Cooling capacity in W

35	3 367	4 689	8 373	10 884	13 942	17 621	21 996	27 143	33 136
40	2 944	4 213	7 705	10 077	12 968	16 453	20 605	25 500	31 213
45	2 522	3 734	7 028	9 260	11 982	15 269	19 195	23 836	29 267
50	2 103	3 256	6 348	8 437	10 987	14 073	17 772	22 156	27 302
55	-	-	5 668	7 610	9 986	12 870	16 337	20 463	25 322
60	-	-	-	6 784	8 983	11 662	14 896	18 760	23 329
65	-	-	-	-	7 982	10 453	13 451	17 051	21 327
75	-	-	-	-	-	-	10 567	13 630	17 314

Power input in W

35	2 286	2 658	3 316	3 603	3 863	4 097	4 305	4 488	4 647
40	2 250	2 666	3 410	3 740	4 042	4 317	4 567	4 790	4 989
45	2 207	2 672	3 515	3 892	4 242	4 565	4 860	5 130	5 374
50	2 141	2 662	3 613	4 044	4 447	4 822	5 170	5 491	5 787
55	-	-	3 690	4 181	4 642	5 076	5 481	5 860	6 211
60	-	-	-	4 286	4 812	5 309	5 778	6 219	6 633
65	-	-	-	-	4 940	5 506	6 044	6 554	7 035
75	-	-	-	-	-	-	6 424	7 087	7 721

Current consumption in A

35	6.54	6.75	7.28	7.56	7.84	8.09	8.30	8.45	8.52
40	6.61	6.84	7.41	7.72	8.03	8.31	8.56	8.75	8.87
45	6.63	6.89	7.52	7.87	8.22	8.55	8.85	9.09	9.27
50	6.60	6.89	7.62	8.01	8.42	8.80	9.16	9.47	9.72
55	-	-	7.67	8.13	8.59	9.05	9.48	9.86	10.19
60	-	-	-	8.21	8.75	9.28	9.79	10.26	10.67
65	-	-	-	-	8.86	9.48	10.09	10.65	11.17
75	-	-	-	-	-	-	10.59	11.38	12.13

Mass flow in kg/h

35	85	117	200	253	317	393	481	584	703
40	79	111	193	246	310	385	472	575	692
45	72	104	186	239	302	376	463	564	681
50	64	96	178	230	292	366	452	552	668
55	-	-	169	221	282	355	440	540	654
60	-	-	-	210	271	343	428	526	639
65	-	-	-	-	260	331	414	511	623
75	-	-	-	-	-	-	383	478	587

Coefficient of performance (C.O.P.)

35	1.47	1.76	2.53	3.02	3.61	4.30	5.11	6.05	7.13
40	1.31	1.58	2.26	2.69	3.21	3.81	4.51	5.32	6.26
45	1.14	1.40	2.00	2.38	2.82	3.35	3.95	4.65	5.45
50	0.98	1.22	1.76	2.09	2.47	2.92	3.44	4.03	4.72
55	-	-	1.54	1.82	2.15	2.54	2.98	3.49	4.08
60	-	-	-	1.58	1.87	2.20	2.58	3.02	3.52
65	-	-	-	-	1.62	1.90	2.23	2.60	3.03
75	-	-	-	-	-	-	1.64	1.92	2.24

Nominal performance at to = 5 °C, tc = 50 °C

Cooling capacity	14 073	W
Power input	4 822	W
Current consumption	8.80	A
Mass flow	366	kg/h
C.O.P.	2.92	

Pressure switch settings

Maximum HP switch setting	20.2	bar(g)
Minimum LP switch setting	0.1	bar(g)
LP pump down setting	0.4	bar(g)

Sound power data

Sound power level	0	dB(A)
With acoustic hood	0	dB(A)

to: Evaporating temperature at dew point

tc: Condensing temperature at dew point

Rating conditions : Superheat = 10 K , Subcooling = 0 K

Tolerance according EN12900

Danfoss can accept no responsibility for possible errors in catalogues, brochures and other printed material. Danfoss reserves the right to alter its products without notice. This also applies to products already on order provided that such alternations can be made without subsequential changes being necessary in specifications already agreed. All trademarks in this material are property of the respective companies. Danfoss, the Danfoss logotype and Maneurop are trademarks of Danfoss A/S. All rights reserved.

Performance data at 60 Hz, ARI rating conditions
R134a

Cond. temp. in °C (tc)	Evaporating temperature in °C (to)							
	-25	-20	-10	-5	0	5	10	15

Cooling capacity in W

35	3 660	5 088	9 053	11 750	15 027	18 964	23 639	29 130	35 514
40	3 219	4 597	8 374	10 934	14 046	17 790	22 245	27 488	33 598
45	2 776	4 101	7 685	10 105	13 050	16 599	20 830	25 824	31 656
50	-	3 603	6 989	9 267	12 042	15 393	19 400	24 141	29 695
55	-	-	6 291	8 424	11 027	14 178	17 957	22 444	27 718
60	-	-	-	7 580	10 007	12 956	16 507	20 738	25 730
65	-	-	-	-	-	11 733	15 053	19 028	23 738
75	-	-	-	-	-	-	12 159	15 621	19 769

Power input in W

35	2 286	2 658	3 316	3 603	3 863	4 097	4 305	4 488	4 647
40	2 250	2 666	3 410	3 740	4 042	4 317	4 567	4 790	4 989
45	2 207	2 672	3 515	3 892	4 242	4 565	4 860	5 130	5 374
50	-	2 662	3 613	4 044	4 447	4 822	5 170	5 491	5 787
55	-	-	3 690	4 181	4 642	5 076	5 481	5 860	6 211
60	-	-	-	4 286	4 812	5 309	5 778	6 219	6 633
65	-	-	-	-	-	5 506	6 044	6 554	7 035
75	-	-	-	-	-	-	6 424	7 087	7 721

Current consumption in A

35	6.54	6.75	7.28	7.56	7.84	8.09	8.30	8.45	8.52
40	6.61	6.84	7.41	7.72	8.03	8.31	8.56	8.75	8.87
45	6.63	6.89	7.52	7.87	8.22	8.55	8.85	9.09	9.27
50	-	6.89	7.62	8.01	8.42	8.80	9.16	9.47	9.72
55	-	-	7.67	8.13	8.59	9.05	9.48	9.86	10.19
60	-	-	-	8.21	8.75	9.28	9.79	10.26	10.67
65	-	-	-	-	-	9.48	10.09	10.65	11.17
75	-	-	-	-	-	-	10.59	11.38	12.13

Mass flow in kg/h

35	85	116	199	252	316	391	479	581	699
40	78	110	192	245	308	383	470	571	688
45	71	103	185	238	300	374	460	561	677
50	-	96	177	229	291	364	450	549	664
55	-	-	168	220	281	353	438	537	650
60	-	-	-	209	270	342	425	523	635
65	-	-	-	-	-	329	412	508	619
75	-	-	-	-	-	-	381	475	584

Coefficient of performance (C.O.P.)

35	1.60	1.91	2.73	3.26	3.89	4.63	5.49	6.49	7.64
40	1.43	1.72	2.46	2.92	3.47	4.12	4.87	5.74	6.73
45	1.26	1.53	2.19	2.60	3.08	3.64	4.29	5.03	5.89
50	-	1.35	1.93	2.29	2.71	3.19	3.75	4.40	5.13
55	-	-	1.70	2.02	2.38	2.79	3.28	3.83	4.46
60	-	-	-	1.77	2.08	2.44	2.86	3.33	3.88
65	-	-	-	-	-	2.13	2.49	2.90	3.37
75	-	-	-	-	-	-	1.89	2.20	2.56

Nominal performance at to = 7.2 °C, tc = 54.4 °C

Cooling capacity	15 917	W
Power input	5 225	W
Current consumption	9.21	A
Mass flow	390	kg/h
C.O.P.	3.05	

Pressure switch settings

Maximum HP switch setting	20.2	bar(g)
Minimum LP switch setting	0.1	bar(g)
LP pump down setting	0.4	bar(g)

Sound power data

Sound power level	0	dB(A)
With acoustic hood	0	dB(A)

to: Evaporating temperature at dew point

tc: Condensing temperature at dew point

Rating conditions : Superheat = 11.1 K , Subcooling = 8.3 K

Tolerance according EN12900

Danfoss can accept no responsibility for possible errors in catalogues, brochures and other printed material. Danfoss reserves the right to alter its products without notice. This also applies to products already on order provided that such alternations can be made without subsequential changes being necessary in specifications already agreed. All trademarks in this material are property of the respective companies. Danfoss, the Danfoss logotype and Maneurop are trademarks of Danfoss A/S. All rights reserved.

Performance data at 60 Hz, EN 12900 rating conditions
R407C

Cond. temp. in °C (tc)	Evaporating temperature in °C (to)							
	-15	-10	-5	0	5	10	15	

Cooling capacity in W

35	9 314	12 344	16 014	20 433	25 715	31 972	39 316	-	-
40	8 588	11 475	14 916	19 021	23 902	29 669	36 436	-	-
45	7 783	10 564	13 814	17 641	22 158	27 474	33 701	-	-
50	-	9 571	12 665	16 252	20 442	25 345	31 071	-	-
55	-	-	11 432	14 814	18 713	23 239	28 500	-	-
60	-	-	-	13 287	16 929	21 113	25 946	-	-
65	-	-	-	11 632	15 050	18 925	23 362	-	-

Power input in W

35	4 498	4 996	5 456	5 891	6 313	6 734	7 165	-	-
40	4 678	5 252	5 776	6 261	6 719	7 162	7 602	-	-
45	4 803	5 474	6 081	6 635	7 149	7 635	8 104	-	-
50	-	5 643	6 353	6 996	7 587	8 135	8 653	-	-
55	-	-	6 574	7 328	8 014	8 645	9 232	-	-
60	-	-	-	7 611	8 413	9 146	9 823	-	-
65	-	-	-	7 828	8 766	9 622	10 408	-	-

Current consumption in A

35	7.60	8.14	8.67	9.17	9.60	9.96	10.22	-	-
40	7.79	8.41	9.02	9.60	10.13	10.59	10.95	-	-
45	7.95	8.65	9.35	10.03	10.66	11.22	11.70	-	-
50	-	8.86	9.66	10.44	11.19	11.87	12.46	-	-
55	-	-	9.94	10.83	11.70	12.50	13.23	-	-
60	-	-	-	11.19	12.18	13.12	14.00	-	-
65	-	-	-	11.50	12.63	13.72	14.74	-	-

Mass flow in kg/h

35	202	263	336	422	523	642	780	-	-
40	196	257	329	412	510	623	755	-	-
45	187	250	321	403	497	607	733	-	-
50	-	240	311	392	485	591	713	-	-
55	-	-	299	380	472	576	694	-	-
60	-	-	-	365	457	559	675	-	-
65	-	-	-	346	438	540	653	-	-

Coefficient of performance (C.O.P.)

35	2.07	2.47	2.93	3.47	4.07	4.75	5.49	-	-
40	1.84	2.18	2.58	3.04	3.56	4.14	4.79	-	-
45	1.62	1.93	2.27	2.66	3.10	3.60	4.16	-	-
50	-	1.70	1.99	2.32	2.69	3.12	3.59	-	-
55	-	-	1.74	2.02	2.34	2.69	3.09	-	-
60	-	-	-	1.75	2.01	2.31	2.64	-	-
65	-	-	-	1.49	1.72	1.97	2.24	-	-

Nominal performance at to = 5 °C, tc = 50 °C

Cooling capacity	20 442	W
Power input	7 587	W
Current consumption	11.19	A
Mass flow	485	kg/h
C.O.P.	2.69	

Pressure switch settings

Maximum HP switch setting	29.4	bar(g)
Minimum LP switch setting	1.4	bar(g)
LP pump down setting	1.7	bar(g)

Sound power data

Sound power level	85	dB(A)
With acoustic hood	79	dB(A)

to: Evaporating temperature at dew point

tc: Condensing temperature at dew point

Rating conditions : Superheat = 10 K , Subcooling = 0 K

Tolerance according EN12900

Performance data at 60 Hz, ARI rating conditions
R407C

Cond. temp. in °C (tc)	Evaporating temperature in °C (to)							
	-15	-10	-5	0	5	10	15	

Cooling capacity in W

35	10 025	13 271	17 195	21 916	27 551	34 219	42 037	-	-
40	9 294	12 402	16 100	20 504	25 734	31 907	39 140	-	-
45	8 476	11 488	14 999	19 128	23 993	29 712	36 402	-	-
50	-	10 485	13 851	17 745	22 285	27 590	33 776	-	-
55	-	-	12 609	16 309	20 566	25 497	31 221	-	-
60	-	-	-	14 778	18 791	23 390	28 692	-	-
65	-	-	-	13 108	16 919	21 225	26 145	-	-

Power input in W

35	4 498	4 996	5 456	5 891	6 313	6 734	7 165	-	-
40	4 678	5 252	5 776	6 261	6 719	7 162	7 602	-	-
45	4 803	5 474	6 081	6 635	7 149	7 635	8 104	-	-
50	-	5 643	6 353	6 996	7 587	8 135	8 653	-	-
55	-	-	6 574	7 328	8 014	8 645	9 232	-	-
60	-	-	-	7 611	8 413	9 146	9 823	-	-
65	-	-	-	7 828	8 766	9 622	10 408	-	-

Current consumption in A

35	7.60	8.14	8.67	9.17	9.60	9.96	10.22	-	-
40	7.79	8.41	9.02	9.60	10.13	10.59	10.95	-	-
45	7.95	8.65	9.35	10.03	10.66	11.22	11.70	-	-
50	-	8.86	9.66	10.44	11.19	11.87	12.46	-	-
55	-	-	9.94	10.83	11.70	12.50	13.23	-	-
60	-	-	-	11.19	12.18	13.12	14.00	-	-
65	-	-	-	11.50	12.63	13.72	14.74	-	-

Mass flow in kg/h

35	201	262	334	420	520	638	775	-	-
40	195	256	327	410	507	620	751	-	-
45	186	248	319	400	495	603	729	-	-
50	-	238	310	390	482	588	709	-	-
55	-	-	297	378	469	573	690	-	-
60	-	-	-	363	454	556	670	-	-
65	-	-	-	344	435	537	649	-	-

Coefficient of performance (C.O.P.)

35	2.23	2.66	3.15	3.72	4.36	5.08	5.87	-	-
40	1.99	2.36	2.79	3.28	3.83	4.46	5.15	-	-
45	1.76	2.10	2.47	2.88	3.36	3.89	4.49	-	-
50	-	1.86	2.18	2.54	2.94	3.39	3.90	-	-
55	-	-	1.92	2.23	2.57	2.95	3.38	-	-
60	-	-	-	1.94	2.23	2.56	2.92	-	-
65	-	-	-	1.67	1.93	2.21	2.51	-	-

Nominal performance at to = 7.2 °C, tc = 54.4 °C

Cooling capacity	22 871	W
Power input	8 242	W
Current consumption	11.99	A
Mass flow	515	kg/h
C.O.P.	2.77	

Pressure switch settings

Maximum HP switch setting	29.4	bar(g)
Minimum LP switch setting	1.4	bar(g)
LP pump down setting	1.7	bar(g)

Sound power data

Sound power level	85	dB(A)
With acoustic hood	79	dB(A)

to: Evaporating temperature at dew point

tc: Condensing temperature at dew point

Rating conditions : Superheat = 11.1 K , Subcooling = 8.3 K

Tolerance according EN12900

Performance data at 60 Hz, EN 12900 rating conditions, Suction temp. = 20 °C
R448A

Cond. temp. in °C (tc)	Evaporating temperature in °C (to)								
	-30	-25	-20	-15	-10	-5	0	5	10

Cooling capacity in W

10	-	9 226	12 037	15 471	19 591	-	-	-	-
20	-	8 152	10 749	13 905	17 683	22 145	27 361	-	-
30	-	7 003	9 359	12 213	15 621	19 645	24 348	29 803	36 093
40	-	-	7 901	10 425	13 438	16 998	21 164	25 999	31 577
50	-	-	-	8 574	11 167	14 238	17 842	22 033	26 874
60	-	-	-	-	8 839	11 398	14 416	17 940	22 021

Power input in W

10	-	2 987	3 173	3 273	3 272	-	-	-	-
20	-	3 465	3 799	4 070	4 261	4 359	4 349	-	-
30	-	3 789	4 260	4 689	5 060	5 359	5 573	5 685	5 682
40	-	-	4 579	5 154	5 693	6 183	6 607	6 952	7 203
50	-	-	-	5 489	6 185	6 852	7 475	8 041	8 534
60	-	-	-	-	6 559	7 391	8 202	8 977	9 701

Current consumption in A

10	-	7.29	7.55	7.72	7.77	-	-	-	-
20	-	7.56	7.93	8.25	8.49	8.61	8.56	-	-
30	-	7.79	8.27	8.74	9.17	9.51	9.73	9.78	9.64
40	-	-	8.54	9.17	9.79	10.36	10.84	11.20	11.40
50	-	-	-	9.52	10.33	11.13	11.88	12.54	13.08
60	-	-	-	-	10.79	11.81	12.83	13.80	14.68

Mass flow in kg/h

10	-	152	198	255	323	-	-	-	-
20	-	144	190	247	315	396	493	-	-
30	-	133	179	235	302	382	478	591	727
40	-	-	165	219	284	363	456	568	700
50	-	-	-	201	263	339	430	538	666
60	-	-	-	-	239	311	398	502	626

Coefficient of performance (C.O.P.)

10	-	3.09	3.79	4.73	5.99	-	-	-	-
20	-	2.35	2.83	3.42	4.15	5.08	6.29	-	-
30	-	1.85	2.20	2.60	3.09	3.67	4.37	5.24	6.35
40	-	-	1.73	2.02	2.36	2.75	3.20	3.74	4.38
50	-	-	-	1.56	1.81	2.08	2.39	2.74	3.15
60	-	-	-	-	1.35	1.54	1.76	2.00	2.27

Nominal performance at to = -10 °C, tc = 45 °C

Cooling capacity	12 312	W
Power input	5 956	W
Current consumption	10.07	A
Mass flow	274	kg/h
C.O.P.	2.07	

Pressure switch settings

Maximum HP switch setting	27.7	bar(g)
Minimum LP switch setting	1	bar(g)
LP pump down setting	1.3	bar(g)

Sound power data

Sound power level	81	dB(A)
With acoustic hood	75	dB(A)

to: Evaporating temperature at dew point

tc: Condensing temperature at dew point

Rating conditions : Suction gas temp. = 20 °C , Subcooling = 0 K

Tolerance according EN12900

Performance data at 60 Hz, EN 12900 rating conditions, Superheat = 10 K
R448A

Cond. temp. in °C (tc)	Evaporating temperature in °C (to)								
	-30	-25	-20	-15	-10	-5	0	5	10

Cooling capacity in W

10	7 006	9 271	12 104	15 566	19 717	-	-	-	-
20	6 004	8 100	10 704	13 877	17 679	22 170	27 411	-	-
30	4 964	6 862	9 209	12 065	15 491	19 546	24 291	29 787	36 093
40	3 922	5 595	7 657	10 169	13 190	16 781	21 003	25 914	31 577
50	-	4 335	6 085	8 224	10 813	13 913	17 582	21 883	26 874
60	-	-	4 528	6 267	8 397	10 976	14 067	17 728	22 021

Power input in W

10	2 731	2 987	3 173	3 273	3 272	-	-	-	-
20	3 081	3 465	3 799	4 070	4 261	4 359	4 349	-	-
30	3 290	3 789	4 260	4 689	5 060	5 359	5 573	5 685	5 682
40	3 380	3 983	4 579	5 154	5 693	6 183	6 607	6 952	7 203
50	-	4 070	4 779	5 489	6 185	6 852	7 475	8 041	8 534
60	-	-	4 885	5 718	6 559	7 391	8 202	8 977	9 701

Current consumption in A

10	6.99	7.29	7.55	7.72	7.77	-	-	-	-
20	7.19	7.56	7.93	8.25	8.49	8.61	8.56	-	-
30	7.34	7.79	8.27	8.74	9.17	9.51	9.73	9.78	9.64
40	7.43	7.95	8.54	9.17	9.79	10.36	10.84	11.20	11.40
50	-	8.04	8.75	9.52	10.33	11.13	11.88	12.54	13.08
60	-	-	8.86	9.79	10.79	11.81	12.83	13.80	14.68

Mass flow in kg/h

10	135	176	226	285	355	-	-	-	-
20	125	167	217	276	345	426	519	-	-
30	114	155	204	263	331	411	502	607	727
40	101	141	189	245	312	390	480	583	700
50	-	124	170	224	289	364	452	552	666
60	-	-	148	200	262	334	418	515	626

Coefficient of performance (C.O.P.)

10	2.57	3.10	3.82	4.76	6.03	-	-	-	-
20	1.95	2.34	2.82	3.41	4.15	5.09	6.30	-	-
30	1.51	1.81	2.16	2.57	3.06	3.65	4.36	5.24	6.35
40	1.16	1.40	1.67	1.97	2.32	2.71	3.18	3.73	4.38
50	-	1.07	1.27	1.50	1.75	2.03	2.35	2.72	3.15
60	-	-	0.93	1.10	1.28	1.49	1.71	1.97	2.27

Nominal performance at to = -10 °C, tc = 45 °C

Cooling capacity	12 009	W
Power input	5 956	W
Current consumption	10.07	A
Mass flow	301	kg/h
C.O.P.	2.02	

Pressure switch settings

Maximum HP switch setting	27.7	bar(g)
Minimum LP switch setting	1	bar(g)
LP pump down setting	1.3	bar(g)

Sound power data

Sound power level	81	dB(A)
With acoustic hood	75	dB(A)

to: Evaporating temperature at dew point

tc: Condensing temperature at dew point

Rating conditions : Superheat = 10 K , Subcooling = 0 K

Tolerance according EN12900

Performance data at 60 Hz, EN 12900 rating conditions, Suction temp. = 20 °C
R449A

Cond. temp. in °C (tc)	Evaporating temperature in °C (to)								
	-30	-25	-20	-15	-10	-5	0	5	10

Cooling capacity in W

10	-	9 243	12 055	15 490	19 609	-	-	-	-
20	-	8 170	10 768	13 925	17 703	22 163	27 375	-	-
30	-	7 022	9 379	12 234	15 642	19 664	24 364	29 812	36 093
40	-	-	7 922	10 447	13 460	17 019	21 180	26 009	31 577
50	-	-	-	8 596	11 190	14 259	17 859	22 043	26 874
60	-	-	-	-	8 862	11 419	14 433	17 951	22 021

Power input in W

10	-	2 987	3 173	3 273	3 272	-	-	-	-
20	-	3 465	3 799	4 070	4 261	4 359	4 349	-	-
30	-	3 789	4 260	4 689	5 060	5 359	5 573	5 685	5 682
40	-	-	4 579	5 154	5 693	6 183	6 607	6 952	7 203
50	-	-	-	5 489	6 185	6 852	7 475	8 041	8 534
60	-	-	-	-	6 559	7 391	8 202	8 977	9 701

Current consumption in A

10	-	7.29	7.55	7.72	7.77	-	-	-	-
20	-	7.56	7.93	8.25	8.49	8.61	8.56	-	-
30	-	7.79	8.27	8.74	9.17	9.51	9.73	9.78	9.64
40	-	-	8.54	9.17	9.79	10.36	10.84	11.20	11.40
50	-	-	-	9.52	10.33	11.13	11.88	12.54	13.08
60	-	-	-	-	10.79	11.81	12.83	13.80	14.68

Mass flow in kg/h

10	-	152	201	261	332	-	-	-	-
20	-	144	193	252	322	405	504	-	-
30	-	135	182	239	308	390	487	603	740
40	-	-	169	224	291	370	466	579	713
50	-	-	-	205	269	346	439	549	680
60	-	-	-	-	244	318	407	514	641

Coefficient of performance (C.O.P.)

10	-	3.09	3.80	4.73	5.99	-	-	-	-
20	-	2.36	2.83	3.42	4.15	5.08	6.29	-	-
30	-	1.85	2.20	2.61	3.09	3.67	4.37	5.24	6.35
40	-	-	1.73	2.03	2.36	2.75	3.21	3.74	4.38
50	-	-	-	1.57	1.81	2.08	2.39	2.74	3.15
60	-	-	-	-	1.35	1.54	1.76	2.00	2.27

Nominal performance at to = -10 °C, tc = 45 °C

Cooling capacity	12 334	W
Power input	5 956	W
Current consumption	10.07	A
Mass flow	280	kg/h
C.O.P.	2.07	

Pressure switch settings

Maximum HP switch setting	27.7	bar(g)
Minimum LP switch setting	1	bar(g)
LP pump down setting	1.3	bar(g)

Sound power data

Sound power level	80	dB(A)
With acoustic hood	74	dB(A)

to: Evaporating temperature at dew point

tc: Condensing temperature at dew point

Rating conditions : Suction gas temp. = 20 °C , Subcooling = 0 K

Tolerance according EN12900

Performance data at 60 Hz, EN 12900 rating conditions, Superheat = 10 K
R449A

Cond. temp. in °C (tc)	Evaporating temperature in °C (to)								
	-30	-25	-20	-15	-10	-5	0	5	10

Cooling capacity in W

10	7 006	9 271	12 104	15 566	19 717	-	-	-	-
20	6 004	8 100	10 704	13 877	17 679	22 170	27 411	-	-
30	4 964	6 862	9 209	12 065	15 491	19 546	24 291	29 787	36 093
40	3 922	5 595	7 657	10 169	13 190	16 781	21 003	25 914	31 577
50	-	4 335	6 085	8 224	10 813	13 913	17 582	21 883	26 874
60	-	-	4 528	6 267	8 397	10 976	14 067	17 728	22 021

Power input in W

10	2 731	2 987	3 173	3 273	3 272	-	-	-	-
20	3 081	3 465	3 799	4 070	4 261	4 359	4 349	-	-
30	3 290	3 789	4 260	4 689	5 060	5 359	5 573	5 685	5 682
40	3 380	3 983	4 579	5 154	5 693	6 183	6 607	6 952	7 203
50	-	4 070	4 779	5 489	6 185	6 852	7 475	8 041	8 534
60	-	-	4 885	5 718	6 559	7 391	8 202	8 977	9 701

Current consumption in A

10	6.99	7.29	7.55	7.72	7.77	-	-	-	-
20	7.19	7.56	7.93	8.25	8.49	8.61	8.56	-	-
30	7.34	7.79	8.27	8.74	9.17	9.51	9.73	9.78	9.64
40	7.43	7.95	8.54	9.17	9.79	10.36	10.84	11.20	11.40
50	-	8.04	8.75	9.52	10.33	11.13	11.88	12.54	13.08
60	-	-	8.86	9.79	10.79	11.81	12.83	13.80	14.68

Mass flow in kg/h

10	131	176	230	292	364	-	-	-	-
20	124	168	220	282	353	436	530	-	-
30	114	157	208	268	338	419	513	619	740
40	103	144	193	251	319	398	490	594	713
50	-	127	174	230	296	373	462	564	680
60	-	-	152	205	268	342	428	527	641

Coefficient of performance (C.O.P.)

10	2.57	3.10	3.82	4.76	6.03	-	-	-	-
20	1.95	2.34	2.82	3.41	4.15	5.09	6.30	-	-
30	1.51	1.81	2.16	2.57	3.06	3.65	4.36	5.24	6.35
40	1.16	1.40	1.67	1.97	2.32	2.71	3.18	3.73	4.38
50	-	1.07	1.27	1.50	1.75	2.03	2.35	2.72	3.15
60	-	-	0.93	1.10	1.28	1.49	1.71	1.97	2.27

Nominal performance at to = -10 °C, tc = 45 °C

Cooling capacity	12 009	W
Power input	5 956	W
Current consumption	10.07	A
Mass flow	308	kg/h
C.O.P.	2.02	

Pressure switch settings

Maximum HP switch setting	27.7	bar(g)
Minimum LP switch setting	1	bar(g)
LP pump down setting	1.3	bar(g)

Sound power data

Sound power level	80	dB(A)
With acoustic hood	74	dB(A)

to: Evaporating temperature at dew point

tc: Condensing temperature at dew point

Rating conditions : Superheat = 10 K , Subcooling = 0 K

Tolerance according EN12900

Performance data at 60 Hz, EN 12900 rating conditions, Suction temp. = 20 °C
R452A

Cond. temp. in °C (tc)	Evaporating temperature in °C (to)								
	-30	-25	-20	-15	-10	-5	0	5	10

Cooling capacity in W

10	-	9 915	12 484	15 606	19 331	-	-	-	-
20	-	8 863	11 278	14 179	17 613	21 634	26 296	-	-
30	-	7 707	9 925	12 561	15 663	19 278	23 456	28 255	33 744
40	-	6 453	8 432	10 763	13 489	16 655	20 307	24 494	29 273
50	-	-	6 806	8 789	11 099	13 776	16 861	20 395	24 422
60	-	-	-	6 651	8 505	10 655	13 135	15 976	19 207

Power input in W

10	-	3 935	4 303	4 664	5 028	-	-	-	-
20	-	4 071	4 461	4 830	5 186	5 541	5 904	-	-
30	-	4 265	4 724	5 146	5 541	5 919	6 291	6 668	7 058
40	-	4 455	5 029	5 551	6 031	6 480	6 907	7 324	7 740
50	-	-	5 317	5 985	6 597	7 162	7 691	8 195	8 682
60	-	-	-	6 388	7 177	7 905	8 582	9 219	9 825

Current consumption in A

10	-	7.89	8.56	9.22	9.91	-	-	-	-
20	-	7.88	8.45	8.99	9.53	10.09	10.71	-	-
30	-	8.07	8.65	9.18	9.68	10.18	10.70	11.27	11.92
40	-	8.26	8.97	9.59	10.17	10.71	11.25	11.81	12.43
50	-	-	9.21	10.05	10.80	11.50	12.16	12.83	13.52
60	-	-	-	10.34	11.38	12.34	13.25	14.12	14.99

Mass flow in kg/h

10	-	201	255	320	398	-	-	-	-
20	-	196	251	317	395	489	599	-	-
30	-	187	242	308	386	479	589	719	873
40	-	174	229	294	371	463	571	698	850
50	-	-	210	274	349	438	544	668	816
60	-	-	-	247	320	406	508	629	772

Coefficient of performance (C.O.P.)

10	-	2.52	2.90	3.35	3.84	-	-	-	-
20	-	2.18	2.53	2.94	3.40	3.90	4.45	-	-
30	-	1.81	2.10	2.44	2.83	3.26	3.73	4.24	4.78
40	-	1.45	1.68	1.94	2.24	2.57	2.94	3.34	3.78
50	-	-	1.28	1.47	1.68	1.92	2.19	2.49	2.81
60	-	-	-	1.04	1.19	1.35	1.53	1.73	1.95

Nominal performance at to = -10 °C, tc = 45 °C

Cooling capacity	12 320	W
Power input	6 309	W
Current consumption	10.48	A
Mass flow	361	kg/h
C.O.P.	1.95	

Pressure switch settings

Maximum HP switch setting	27.7	bar(g)
Minimum LP switch setting	1	bar(g)
LP pump down setting	1.3	bar(g)

Sound power data

Sound power level	82	dB(A)
With acoustic hood	76	dB(A)

to: Evaporating temperature at dew point

tc: Condensing temperature at dew point

Rating conditions : Suction gas temp. = 20 °C , Subcooling = 0 K

Tolerance according EN12900

Performance data at 60 Hz, EN 12900 rating conditions, Superheat = 10 K
R452A

Cond. temp. in °C (tc)	Evaporating temperature in °C (to)								
	-30	-25	-20	-15	-10	-5	0	5	10

Cooling capacity in W

10	7 596	9 652	12 224	15 364	19 126	-	-	-	-
20	6 536	8 484	10 884	13 791	17 258	21 341	26 093	-	-
30	5 428	7 220	9 404	12 033	15 161	18 842	23 130	28 079	33 744
40	4 284	5 878	7 800	10 106	12 849	16 083	19 862	24 241	29 273
50	3 122	4 471	6 087	8 024	10 337	13 079	16 305	20 068	24 422
60	-	3 014	4 279	5 803	7 641	9 846	12 473	15 575	19 207

Power input in W

10	3 548	3 935	4 303	4 664	5 028	-	-	-	-
20	3 647	4 071	4 461	4 830	5 186	5 541	5 904	-	-
30	3 758	4 265	4 724	5 146	5 541	5 919	6 291	6 668	7 058
40	3 818	4 455	5 029	5 551	6 031	6 480	6 907	7 324	7 740
50	3 769	4 582	5 317	5 985	6 597	7 162	7 691	8 195	8 682
60	-	4 584	5 527	6 388	7 177	7 905	8 582	9 219	9 825

Current consumption in A

10	7.20	7.89	8.56	9.22	9.91	-	-	-	-
20	7.26	7.88	8.45	8.99	9.53	10.09	10.71	-	-
30	7.41	8.07	8.65	9.18	9.68	10.18	10.70	11.27	11.92
40	7.46	8.26	8.97	9.59	10.17	10.71	11.25	11.81	12.43
50	7.21	8.28	9.21	10.05	10.80	11.50	12.16	12.83	13.52
60	-	7.91	9.19	10.34	11.38	12.34	13.25	14.12	14.99

Mass flow in kg/h

10	185	234	291	359	438	-	-	-	-
20	178	228	287	355	435	527	632	-	-
30	167	218	277	346	425	516	621	739	873
40	152	203	262	330	408	498	601	718	850
50	133	183	241	307	384	472	573	687	816
60	-	157	213	278	352	438	535	646	772

Coefficient of performance (C.O.P.)

10	2.14	2.45	2.84	3.29	3.80	-	-	-	-
20	1.79	2.08	2.44	2.86	3.33	3.85	4.42	-	-
30	1.44	1.69	1.99	2.34	2.74	3.18	3.68	4.21	4.78
40	1.12	1.32	1.55	1.82	2.13	2.48	2.88	3.31	3.78
50	0.83	0.98	1.14	1.34	1.57	1.83	2.12	2.45	2.81
60	-	0.66	0.77	0.91	1.06	1.25	1.45	1.69	1.95

Nominal performance at to = -10 °C, tc = 45 °C

Cooling capacity	11 617	W
Power input	6 309	W
Current consumption	10.48	A
Mass flow	397	kg/h
C.O.P.	1.84	

Pressure switch settings

Maximum HP switch setting	27.7	bar(g)
Minimum LP switch setting	1	bar(g)
LP pump down setting	1.3	bar(g)

Sound power data

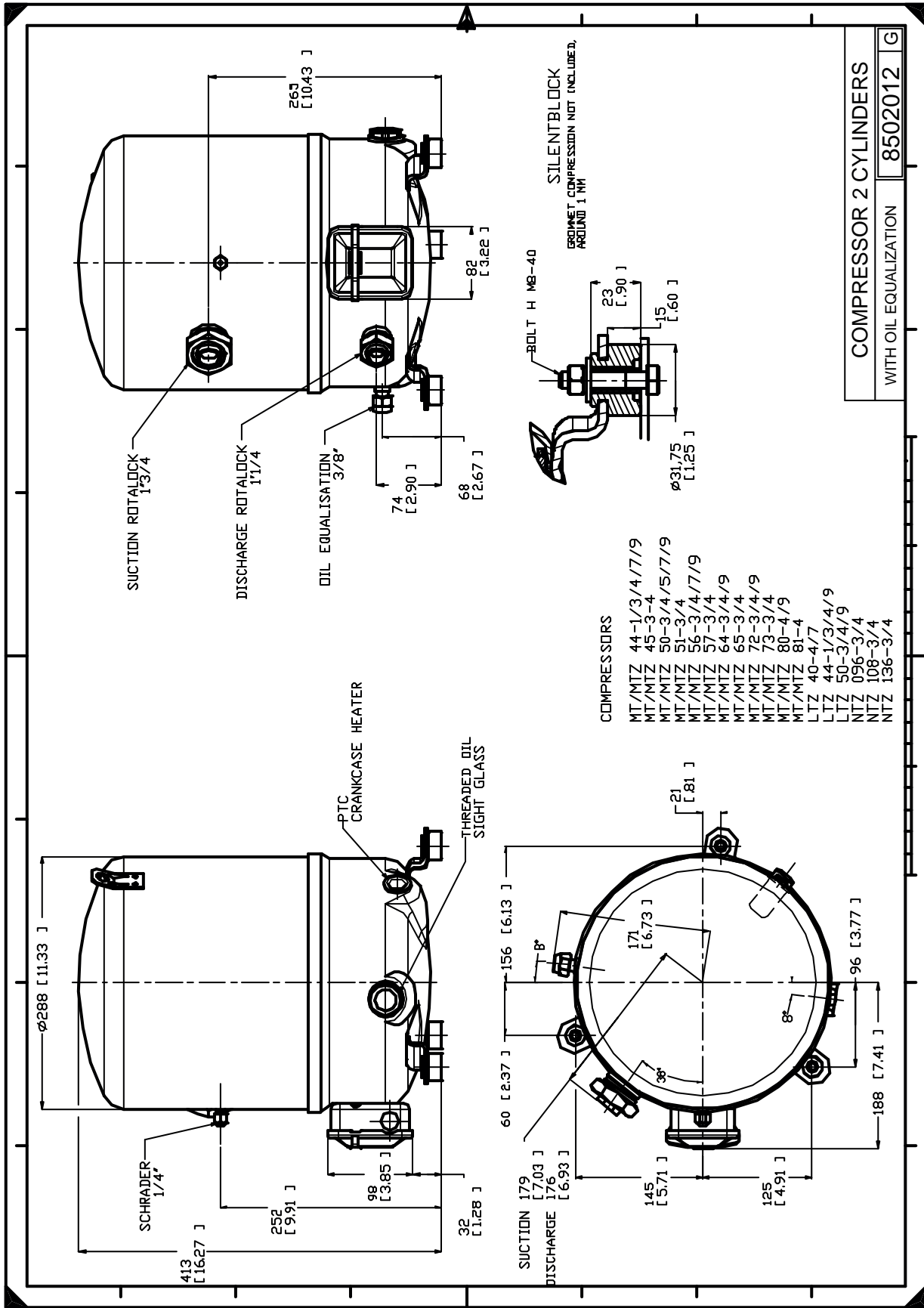
Sound power level	82	dB(A)
With acoustic hood	76	dB(A)

to: Evaporating temperature at dew point

tc: Condensing temperature at dew point

Rating conditions : Superheat = 10 K , Subcooling = 0 K

Tolerance according EN12900



Danfoss can accept no responsibility for possible errors in catalogues, brochures and other printed material. Danfoss reserves the right to alter its products without notice. This also applies to products already on order provided that such alternations can be made without consequential changes being necessary in specifications already agreed. All trademarks in this material are property of the respective companies. Danfoss, the Danfoss logotype and Maneurop are trademarks of Danfoss A/S. All rights reserved.