

Datasheets

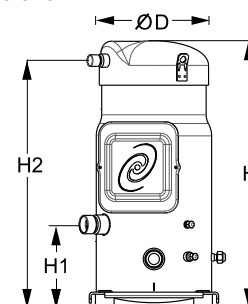
# Danfoss scroll compressors **SM / SY / SZ / SH / WSH**



## General Characteristics

Model number (on compressor nameplate)		<b>SM115S4QC</b>
Code number for Singlepack*		SM115-4QAI
Drawing number		8551111b
Suction and discharge connections		Brazed
Suction connection		1-3/8" ODF
Discharge connection		7/8" ODF
Oil sight glass		Threaded
Oil equalisation connection		3/8" ODF
Oil drain connection		1/4" flare
LP gauge port		Schrader
IPR valve		None
Swept volume		155 cm <sup>3</sup> /rev
Displacement @ Nominal speed		27.0 m <sup>3</sup> /h @ 2900 rpm - 32.5 m <sup>3</sup> /h @ 3500 rpm
Net weight		78 kg
Oil charge		3,8 litre, Mineral - 160P
Maximum system test pressure Low Side / High side		25 bar(g) / 32 bar(g)
Maximum differential test pressure		24 bar
Maximum number of starts per hour		12
Refrigerant charge limit		11 kg
Approved refrigerants		R22, R417A-160SZ

## Dimensions



D=253 mm

H=579 mm

H1=180 mm

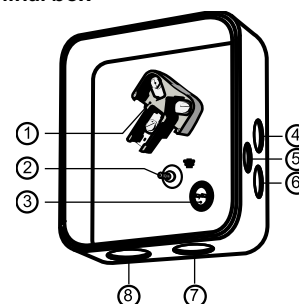
H2=536 mm

H3=- mm

## Electrical Characteristics

Nominal voltage	380-400V/3/50Hz - 460V/3/60Hz
Voltage range	340-440 V @ 50Hz - 414-506 V @ 60Hz
Winding resistance (between phases) +/- 7% at 25°C	1.16 Ω
Maximum Must Trip current (MMT)	25 A
Locked Rotor Amps (LRA)	120 A
Motor protection	Internal thermostat, ext. overload protector needed

## Terminal box



## Recommended Installation torques

Oil sight glass	50 Nm
Power connections / Earth connection	3 Nm / 2 Nm
Terminal box cover screws	2,3 Nm
Mounting bolts	21 Nm

## Parts shipped with compressor

Mounting kit with grommets, bolts, nuts, sleeves and washers
Initial oil charge
Installation instructions

**Approvals** : CE certified, UL certified (file SA6873), -

\*Singlepack: Compressor in cardboard box

\*\*Industrial pack: 6 Unboxed compressors on pallet (order per multiples of 6)

IP54 (with cable gland)

- 1: Power connection, 3 x 4.8 mm (3/16")
- 2: Earth M5
- 3: Thermostat connector
- 4: Knock-out Ø 22 mm (7/8") for 1/2" conduit
- 5: Knock-out Ø 16.5 mm (0.65")
- 6: Knock-out Ø 20.5 mm (0.81")
- 7: Double knock-out Ø 32.1 mm (1.26") & Ø 25.4 mm (1")
- 8: Double knock-out Ø 44 mm (1-3/4") for 1-1/4" conduit & Ø 34 mm (1-3/8") for 1" conduit

Rotolock accessories, suction side	Code no.
------------------------------------	----------

Rotolock accessories, discharge side	Code no.
--------------------------------------	----------

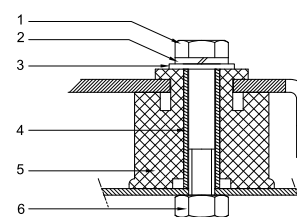
Rotolock accessories, sets	Code no.
----------------------------	----------

Oil / lubricants	Code no.
------------------	----------

Mineral oil, 160P, 2 litre can	7754001
Mineral oil, 160P, 5 litre can	7754002

Crankcase heaters	Code no.
-------------------	----------

Surface sump heater + bottom insulation, 48 W, 24 V, CE mark, UL	120Z0363
Surface sump heater + bottom insulation, 48 W, 230 V, CE mark, UL	120Z0384
Surface sump heater + bottom insulation, 48 W, 400 V, CE mark, UL	120Z0385
Surface sump heater + bottom insulation, 48 W, 460 V, CE mark, UL	120Z0386
Belt type crankcase heater, 65 W, 460 V, CE mark, UL	120Z0466
Belt type crankcase heater, 65 W, 230 V, CE mark, UL	7773107
Belt type crankcase heater, 65 W, 400 V, CE mark, UL	7773117
Belt type crankcase heater, 65 W, 400 V, CE mark, UL	120Z0039

**Mounting kit**


- 1: Bolt (4x)
- 2: Lock washer (4x)
- 3: Flat washer (4x)
- 4: Sleeve (4x)
- 5: Grommet (4x)
- 6: Nut (4x)

Miscellaneous accessories	Code no.
---------------------------	----------

Electronic soft start kit, MCI 25 C	7705007
Soft start kit with statoric resistors, prewired box, SCR03	7705001
Acoustic hood for scroll compressor S115-S125	7755009
Bottom insulation for scroll compressor	120Z0357
Discharge thermostat kit	7750009

Spare parts	Code no.
-------------	----------

Mounting kit for 1 scroll compressor including 4 grommets, 4 sleeves, 4 bolts, 4 washers	8156138
Mounting kit for 1 scroll compressor including 4 grommets, 4 sleeves, 4 bolts, 4 washers, 2 rotolock nuts, 2 solder sleeves, 2 gaskets	8156146
Oil sight glass with gaskets (black & white)	8156019
Gasket for oil sight glass (white teflon)	8156129
Terminal box 186 x 198 mm, incl cover	8156139
T block connector 60 x 75 mm	8173021

**Performance data at 50 Hz, EN 12900 rating conditions**
**R22**

Cond. temp. in °C (tc)	Evaporating temperature in °C (to)							
	-20	-15	-10	-5	0	5	10	15

**Cooling capacity in W**

30	-	-	-	-	-	-	-	-
35	-	-	-	-	-	-	-	-
40	-	-	-	-	-	-	-	-
45	-	-	-	-	-	-	-	-
50	-	-	-	-	-	-	-	-
55	-	-	-	-	-	-	-	-
60	-	-	-	-	-	-	-	-
65	-	-	-	-	-	-	-	-

**Power input in W**

30	-	-	-	-	-	-	-	-
35	-	-	-	-	-	-	-	-
40	-	-	-	-	-	-	-	-
45	-	-	-	-	-	-	-	-
50	-	-	-	-	-	-	-	-
55	-	-	-	-	-	-	-	-
60	-	-	-	-	-	-	-	-
65	-	-	-	-	-	-	-	-

**Current consumption in A**

30	-	-	-	-	-	-	-	-
35	-	-	-	-	-	-	-	-
40	-	-	-	-	-	-	-	-
45	-	-	-	-	-	-	-	-
50	-	-	-	-	-	-	-	-
55	-	-	-	-	-	-	-	-
60	-	-	-	-	-	-	-	-
65	-	-	-	-	-	-	-	-

**Mass flow in kg/h**

30	-	-	-	-	-	-	-	-
35	-	-	-	-	-	-	-	-
40	-	-	-	-	-	-	-	-
45	-	-	-	-	-	-	-	-
50	-	-	-	-	-	-	-	-
55	-	-	-	-	-	-	-	-
60	-	-	-	-	-	-	-	-
65	-	-	-	-	-	-	-	-

**Coefficient of performance (C.O.P.)**

30	-	-	-	-	-	-	-	-
35	-	-	-	-	-	-	-	-
40	-	-	-	-	-	-	-	-
45	-	-	-	-	-	-	-	-
50	-	-	-	-	-	-	-	-
55	-	-	-	-	-	-	-	-
60	-	-	-	-	-	-	-	-
65	-	-	-	-	-	-	-	-

**Nominal performance at to = 5 °C, tc = 50 °C**

Cooling capacity	-	W
Power input	-	W
Current consumption	-	A
Mass flow	-	kg/h
C.O.P.	-	

**Pressure switch settings**

Maximum HP switch setting	28	bar(g)
Minimum LP switch setting	0.5	bar(g)
LP pump down setting	1.3	bar(g)

**Sound power data**

Sound power level	76	dB(A)
With accoustic hood	68	dB(A)

to: Evaporating temperature at dew point

tc: Condensing temperature at dew point

Rating conditions : Superheat = 10 K , Subcooling = 0 K

All performance data +/- 5%

Danfoss can accept no responsibility for possible errors in catalogues, brochures and other printed material. Danfoss reserves the right to alter its products without notice. This also applies to products already on order provided that such alternations can be made without subsequential changes being necessary in specifications already agreed. All trademarks in this material are property of the respective companies. Danfoss and the Danfoss logotype are trademarks of Danfoss A/S. All rights reserved.

**Performance data at 50 Hz, ARI rating conditions**
**R22**

Cond. temp. in °C (tc)	Evaporating temperature in °C (to)							
	-20	-15	-10	-5	0	5	10	15

**Cooling capacity in W**

30	-	-	-	-	-	-	-	-
35	-	-	-	-	-	-	-	-
40	-	-	-	-	-	-	-	-
45	-	-	-	-	-	-	-	-
50	-	-	-	-	-	-	-	-
55	-	-	-	-	-	-	-	-
60	-	-	-	-	-	-	-	-
65	-	-	-	-	-	-	-	-

**Power input in W**

30	-	-	-	-	-	-	-	-
35	-	-	-	-	-	-	-	-
40	-	-	-	-	-	-	-	-
45	-	-	-	-	-	-	-	-
50	-	-	-	-	-	-	-	-
55	-	-	-	-	-	-	-	-
60	-	-	-	-	-	-	-	-
65	-	-	-	-	-	-	-	-

**Current consumption in A**

30	-	-	-	-	-	-	-	-
35	-	-	-	-	-	-	-	-
40	-	-	-	-	-	-	-	-
45	-	-	-	-	-	-	-	-
50	-	-	-	-	-	-	-	-
55	-	-	-	-	-	-	-	-
60	-	-	-	-	-	-	-	-
65	-	-	-	-	-	-	-	-

**Mass flow in kg/h**

30	-	-	-	-	-	-	-	-
35	-	-	-	-	-	-	-	-
40	-	-	-	-	-	-	-	-
45	-	-	-	-	-	-	-	-
50	-	-	-	-	-	-	-	-
55	-	-	-	-	-	-	-	-
60	-	-	-	-	-	-	-	-
65	-	-	-	-	-	-	-	-

**Coefficient of performance (C.O.P.)**

30	-	-	-	-	-	-	-	-
35	-	-	-	-	-	-	-	-
40	-	-	-	-	-	-	-	-
45	-	-	-	-	-	-	-	-
50	-	-	-	-	-	-	-	-
55	-	-	-	-	-	-	-	-
60	-	-	-	-	-	-	-	-
65	-	-	-	-	-	-	-	-

**Nominal performance at to = 7.2 °C, tc = 54.4 °C**

Cooling capacity	-	W
Power input	-	W
Current consumption	-	A
Mass flow	-	kg/h
C.O.P.	-	

to: Evaporating temperature at dew point

tc: Condensing temperature at dew point

Rating conditions : Superheat = 11.1 K, Subcooling = 8.3 K

**Pressure switch settings**

Maximum HP switch setting	28	bar(g)
Minimum LP switch setting	0.5	bar(g)
LP pump down setting	1.3	bar(g)

**Sound power data**

Sound power level	76	dB(A)
With accoustic hood	68	dB(A)

All performance data +/- 5%

Danfoss can accept no responsibility for possible errors in catalogues, brochures and other printed material. Danfoss reserves the right to alter its products without notice. This also applies to products already on order provided that such alternations can be made without subsequential changes being necessary in specifications already agreed. All trademarks in this material are property of the respective companies. Danfoss and the Danfoss logotype are trademarks of Danfoss A/S. All rights reserved.

**Performance data at 60 Hz, EN 12900 rating conditions**
**R22**

Cond. temp. in °C (tc)	Evaporating temperature in °C (to)							
	-20	-15	-10	-5	0	5	10	15

**Cooling capacity in W**

30	-	-	-	-	-	-	-	-
35	-	-	-	-	-	-	-	-
40	-	-	-	-	-	-	-	-
45	-	-	-	-	-	-	-	-
50	-	-	-	-	-	-	-	-
55	-	-	-	-	-	-	-	-
60	-	-	-	-	-	-	-	-
65	-	-	-	-	-	-	-	-

**Power input in W**

30	-	-	-	-	-	-	-	-
35	-	-	-	-	-	-	-	-
40	-	-	-	-	-	-	-	-
45	-	-	-	-	-	-	-	-
50	-	-	-	-	-	-	-	-
55	-	-	-	-	-	-	-	-
60	-	-	-	-	-	-	-	-
65	-	-	-	-	-	-	-	-

**Current consumption in A**

30	-	-	-	-	-	-	-	-
35	-	-	-	-	-	-	-	-
40	-	-	-	-	-	-	-	-
45	-	-	-	-	-	-	-	-
50	-	-	-	-	-	-	-	-
55	-	-	-	-	-	-	-	-
60	-	-	-	-	-	-	-	-
65	-	-	-	-	-	-	-	-

**Mass flow in kg/h**

30	-	-	-	-	-	-	-	-
35	-	-	-	-	-	-	-	-
40	-	-	-	-	-	-	-	-
45	-	-	-	-	-	-	-	-
50	-	-	-	-	-	-	-	-
55	-	-	-	-	-	-	-	-
60	-	-	-	-	-	-	-	-
65	-	-	-	-	-	-	-	-

**Coefficient of performance (C.O.P.)**

30	-	-	-	-	-	-	-	-
35	-	-	-	-	-	-	-	-
40	-	-	-	-	-	-	-	-
45	-	-	-	-	-	-	-	-
50	-	-	-	-	-	-	-	-
55	-	-	-	-	-	-	-	-
60	-	-	-	-	-	-	-	-
65	-	-	-	-	-	-	-	-

**Nominal performance at to = 5 °C, tc = 50 °C**

Cooling capacity	-	W
Power input	-	W
Current consumption	-	A
Mass flow	-	kg/h
C.O.P.	-	

to: Evaporating temperature at dew point

tc: Condensing temperature at dew point

Rating conditions : Superheat = 10 K , Subcooling = 0 K

**Pressure switch settings**

Maximum HP switch setting	28	bar(g)
Minimum LP switch setting	0.5	bar(g)
LP pump down setting	1.3	bar(g)

**Sound power data**

Sound power level	79	dB(A)
With accoustic hood	71	dB(A)

All performance data +/- 5%

Danfoss can accept no responsibility for possible errors in catalogues, brochures and other printed material. Danfoss reserves the right to alter its products without notice. This also applies to products already on order provided that such alternations can be made without subsequential changes being necessary in specifications already agreed. All trademarks in this material are property of the respective companies. Danfoss and the Danfoss logotype are trademarks of Danfoss A/S. All rights reserved.

**Performance data at 60 Hz, ARI rating conditions**
**R22**

Cond. temp. in °C (tc)	Evaporating temperature in °C (to)							
	-20	-15	-10	-5	0	5	10	15

**Cooling capacity in W**

30	-	-	-	-	-	-	-	-
35	-	-	-	-	-	-	-	-
40	-	-	-	-	-	-	-	-
45	-	-	-	-	-	-	-	-
50	-	-	-	-	-	-	-	-
55	-	-	-	-	-	-	-	-
60	-	-	-	-	-	-	-	-
65	-	-	-	-	-	-	-	-

**Power input in W**

30	-	-	-	-	-	-	-	-
35	-	-	-	-	-	-	-	-
40	-	-	-	-	-	-	-	-
45	-	-	-	-	-	-	-	-
50	-	-	-	-	-	-	-	-
55	-	-	-	-	-	-	-	-
60	-	-	-	-	-	-	-	-
65	-	-	-	-	-	-	-	-

**Current consumption in A**

30	-	-	-	-	-	-	-	-
35	-	-	-	-	-	-	-	-
40	-	-	-	-	-	-	-	-
45	-	-	-	-	-	-	-	-
50	-	-	-	-	-	-	-	-
55	-	-	-	-	-	-	-	-
60	-	-	-	-	-	-	-	-
65	-	-	-	-	-	-	-	-

**Mass flow in kg/h**

30	-	-	-	-	-	-	-	-
35	-	-	-	-	-	-	-	-
40	-	-	-	-	-	-	-	-
45	-	-	-	-	-	-	-	-
50	-	-	-	-	-	-	-	-
55	-	-	-	-	-	-	-	-
60	-	-	-	-	-	-	-	-
65	-	-	-	-	-	-	-	-

**Coefficient of performance (C.O.P.)**

30	-	-	-	-	-	-	-	-
35	-	-	-	-	-	-	-	-
40	-	-	-	-	-	-	-	-
45	-	-	-	-	-	-	-	-
50	-	-	-	-	-	-	-	-
55	-	-	-	-	-	-	-	-
60	-	-	-	-	-	-	-	-
65	-	-	-	-	-	-	-	-

**Nominal performance at to = 7.2 °C, tc = 54.4 °C**

Cooling capacity	-	W
Power input	-	W
Current consumption	-	A
Mass flow	-	kg/h
C.O.P.	-	

to: Evaporating temperature at dew point

tc: Condensing temperature at dew point

Rating conditions : Superheat = 11.1 K, Subcooling = 8.3 K

**Pressure switch settings**

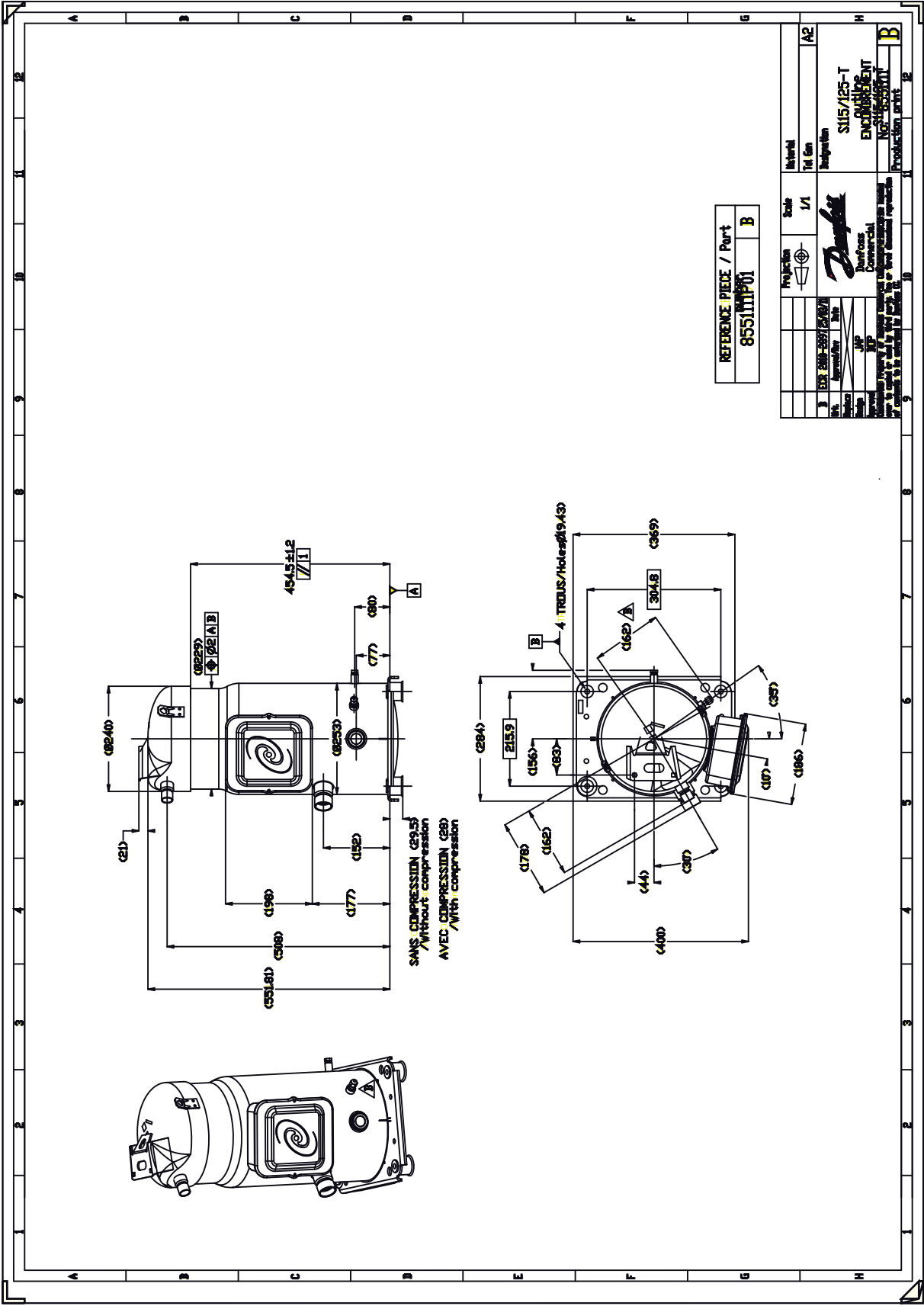
Maximum HP switch setting	28	bar(g)
Minimum LP switch setting	0.5	bar(g)
LP pump down setting	1.3	bar(g)

**Sound power data**

Sound power level	79	dB(A)
With accoustic hood	71	dB(A)

All performance data +/- 5%

Danfoss can accept no responsibility for possible errors in catalogues, brochures and other printed material. Danfoss reserves the right to alter its products without notice. This also applies to products already on order provided that such alternations can be made without subsequential changes being necessary in specifications already agreed. All trademarks in this material are property of the respective companies. Danfoss and the Danfoss logotype are trademarks of Danfoss A/S. All rights reserved.

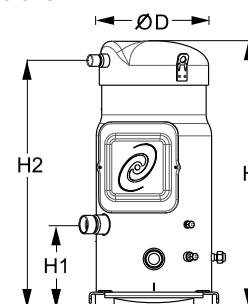




## General Characteristics

Model number (on compressor nameplate)		<b>SM115S4QC</b>
Code number for Singlepack*		SM115-4QAI
Drawing number		8551111b
Suction and discharge connections		Brazed
Suction connection		1-3/8" ODF
Discharge connection		7/8" ODF
Oil sight glass		Threaded
Oil equalisation connection		3/8" ODF
Oil drain connection		1/4" flare
LP gauge port		Schrader
IPR valve		None
Swept volume		155 cm <sup>3</sup> /rev
Displacement @ Nominal speed		27.0 m <sup>3</sup> /h @ 2900 rpm - 32.5 m <sup>3</sup> /h @ 3500 rpm
Net weight		78 kg
Oil charge		3,8 litre, Mineral - 160P
Maximum system test pressure Low Side / High side		25 bar(g) / 32 bar(g)
Maximum differential test pressure		24 bar
Maximum number of starts per hour		12
Refrigerant charge limit		11 kg
Approved refrigerants		R22, R417A-160SZ

## Dimensions



D=253 mm

H=579 mm

H1=180 mm

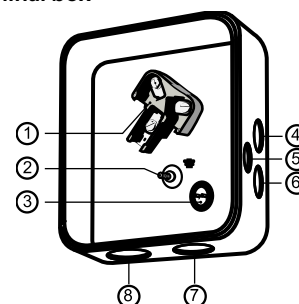
H2=536 mm

H3=- mm

## Electrical Characteristics

Nominal voltage	380-400V/3/50Hz - 460V/3/60Hz
Voltage range	340-440 V @ 50Hz - 414-506 V @ 60Hz
Winding resistance (between phases) +/- 7% at 25°C	1.16 Ω
Maximum Must Trip current (MMT)	25 A
Locked Rotor Amps (LRA)	120 A
Motor protection	Internal thermostat, ext. overload protector needed

## Terminal box



## Recommended Installation torques

Oil sight glass	50 Nm
Power connections / Earth connection	3 Nm / 2 Nm
Terminal box cover screws	2,3 Nm
Mounting bolts	21 Nm

## Parts shipped with compressor

Mounting kit with grommets, bolts, nuts, sleeves and washers
Initial oil charge
Installation instructions

**Approvals** : CE certified, UL certified (file SA6873), -

\*Singlepack: Compressor in cardboard box

\*\*Industrial pack: 6 Unboxed compressors on pallet (order per multiples of 6)

IP54 (with cable gland)

- 1: Power connection, 3 x 4.8 mm (3/16")
- 2: Earth M5
- 3: Thermostat connector
- 4: Knock-out Ø 22 mm (7/8") for 1/2" conduit
- 5: Knock-out Ø 16.5 mm (0.65")
- 6: Knock-out Ø 20.5 mm (0.81")
- 7: Double knock-out Ø 32.1 mm (1.26") & Ø 25.4 mm (1")
- 8: Double knock-out Ø 44 mm (1-3/4") for 1-1/4" conduit & Ø 34 mm (1-3/8") for 1" conduit

<b>Rotolock accessories, suction side</b>	<b>Code no.</b>
---	-----------------

<b>Rotolock accessories, discharge side</b>	<b>Code no.</b>
---	-----------------

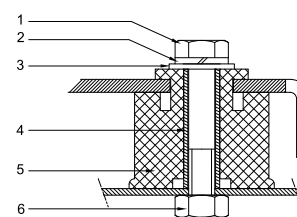
<b>Rotolock accessories, sets</b>	<b>Code no.</b>
-----------------------------------	-----------------

<b>Oil / lubricants</b>	<b>Code no.</b>
-------------------------	-----------------

Mineral oil, 160P, 2 litre can	7754001
Mineral oil, 160P, 5 litre can	7754002

<b>Crankcase heaters</b>	<b>Code no.</b>
--------------------------	-----------------

Surface sump heater + bottom insulation, 48 W, 24 V, CE mark, UL	120Z0363
Surface sump heater + bottom insulation, 48 W, 230 V, CE mark, UL	120Z0384
Surface sump heater + bottom insulation, 48 W, 400 V, CE mark, UL	120Z0385
Surface sump heater + bottom insulation, 48 W, 460 V, CE mark, UL	120Z0386
Belt type crankcase heater, 65 W, 460 V, CE mark, UL	120Z0466
Belt type crankcase heater, 65 W, 230 V, CE mark, UL	7773107
Belt type crankcase heater, 65 W, 400 V, CE mark, UL	7773117
Belt type crankcase heater, 65 W, 400 V, CE mark, UL	120Z0039

**Mounting kit**


- 1: Bolt (4x)
- 2: Lock washer (4x)
- 3: Flat washer (4x)
- 4: Sleeve (4x)
- 5: Grommet (4x)
- 6: Nut (4x)

<b>Miscellaneous accessories</b>	<b>Code no.</b>
----------------------------------	-----------------

Electronic soft start kit, MCI 25 C	7705007
Soft start kit with statoric resistors, prewired box, SCR03	7705001
Acoustic hood for scroll compressor S115-S125	7755009
Bottom insulation for scroll compressor	120Z0357
Discharge thermostat kit	7750009

<b>Spare parts</b>	<b>Code no.</b>
--------------------	-----------------

Mounting kit for 1 scroll compressor including 4 grommets, 4 sleeves, 4 bolts, 4 washers	8156138
Mounting kit for 1 scroll compressor including 4 grommets, 4 sleeves, 4 bolts, 4 washers, 2 rotolock nuts, 2 solder sleeves, 2 gaskets	8156146
Oil sight glass with gaskets (black & white)	8156019
Gasket for oil sight glass (white teflon)	8156129
Terminal box 186 x 198 mm, incl cover	8156139
T block connector 60 x 75 mm	8173021

**Performance data at 50 Hz, EN 12900 rating conditions**
**R22**

Cond. temp. in °C (tc)	Evaporating temperature in °C (to)							
	-20	-15	-10	-5	0	5	10	15

**Cooling capacity in W**

30	-	-	-	-	-	-	-	-
35	-	-	-	-	-	-	-	-
40	-	-	-	-	-	-	-	-
45	-	-	-	-	-	-	-	-
50	-	-	-	-	-	-	-	-
55	-	-	-	-	-	-	-	-
60	-	-	-	-	-	-	-	-
65	-	-	-	-	-	-	-	-

**Power input in W**

30	-	-	-	-	-	-	-	-
35	-	-	-	-	-	-	-	-
40	-	-	-	-	-	-	-	-
45	-	-	-	-	-	-	-	-
50	-	-	-	-	-	-	-	-
55	-	-	-	-	-	-	-	-
60	-	-	-	-	-	-	-	-
65	-	-	-	-	-	-	-	-

**Current consumption in A**

30	-	-	-	-	-	-	-	-
35	-	-	-	-	-	-	-	-
40	-	-	-	-	-	-	-	-
45	-	-	-	-	-	-	-	-
50	-	-	-	-	-	-	-	-
55	-	-	-	-	-	-	-	-
60	-	-	-	-	-	-	-	-
65	-	-	-	-	-	-	-	-

**Mass flow in kg/h**

30	-	-	-	-	-	-	-	-
35	-	-	-	-	-	-	-	-
40	-	-	-	-	-	-	-	-
45	-	-	-	-	-	-	-	-
50	-	-	-	-	-	-	-	-
55	-	-	-	-	-	-	-	-
60	-	-	-	-	-	-	-	-
65	-	-	-	-	-	-	-	-

**Coefficient of performance (C.O.P.)**

30	-	-	-	-	-	-	-	-
35	-	-	-	-	-	-	-	-
40	-	-	-	-	-	-	-	-
45	-	-	-	-	-	-	-	-
50	-	-	-	-	-	-	-	-
55	-	-	-	-	-	-	-	-
60	-	-	-	-	-	-	-	-
65	-	-	-	-	-	-	-	-

**Nominal performance at to = 5 °C, tc = 50 °C**

Cooling capacity	-	W
Power input	-	W
Current consumption	-	A
Mass flow	-	kg/h
C.O.P.	-	

to: Evaporating temperature at dew point

tc: Condensing temperature at dew point

Rating conditions : Superheat = 10 K , Subcooling = 0 K

**Pressure switch settings**

Maximum HP switch setting	28	bar(g)
Minimum LP switch setting	0.5	bar(g)
LP pump down setting	1.3	bar(g)

**Sound power data**

Sound power level	76	dB(A)
With accoustic hood	68	dB(A)

All performance data +/- 5%

Danfoss can accept no responsibility for possible errors in catalogues, brochures and other printed material. Danfoss reserves the right to alter its products without notice. This also applies to products already on order provided that such alternations can be made without subsequential changes being necessary in specifications already agreed. All trademarks in this material are property of the respective companies. Danfoss and the Danfoss logotype are trademarks of Danfoss A/S. All rights reserved.

**Performance data at 50 Hz, ARI rating conditions**
**R22**

Cond. temp. in °C (tc)	Evaporating temperature in °C (to)							
	-20	-15	-10	-5	0	5	10	15

**Cooling capacity in W**

30	-	-	-	-	-	-	-	-
35	-	-	-	-	-	-	-	-
40	-	-	-	-	-	-	-	-
45	-	-	-	-	-	-	-	-
50	-	-	-	-	-	-	-	-
55	-	-	-	-	-	-	-	-
60	-	-	-	-	-	-	-	-
65	-	-	-	-	-	-	-	-

**Power input in W**

30	-	-	-	-	-	-	-	-
35	-	-	-	-	-	-	-	-
40	-	-	-	-	-	-	-	-
45	-	-	-	-	-	-	-	-
50	-	-	-	-	-	-	-	-
55	-	-	-	-	-	-	-	-
60	-	-	-	-	-	-	-	-
65	-	-	-	-	-	-	-	-

**Current consumption in A**

30	-	-	-	-	-	-	-	-
35	-	-	-	-	-	-	-	-
40	-	-	-	-	-	-	-	-
45	-	-	-	-	-	-	-	-
50	-	-	-	-	-	-	-	-
55	-	-	-	-	-	-	-	-
60	-	-	-	-	-	-	-	-
65	-	-	-	-	-	-	-	-

**Mass flow in kg/h**

30	-	-	-	-	-	-	-	-
35	-	-	-	-	-	-	-	-
40	-	-	-	-	-	-	-	-
45	-	-	-	-	-	-	-	-
50	-	-	-	-	-	-	-	-
55	-	-	-	-	-	-	-	-
60	-	-	-	-	-	-	-	-
65	-	-	-	-	-	-	-	-

**Coefficient of performance (C.O.P.)**

30	-	-	-	-	-	-	-	-
35	-	-	-	-	-	-	-	-
40	-	-	-	-	-	-	-	-
45	-	-	-	-	-	-	-	-
50	-	-	-	-	-	-	-	-
55	-	-	-	-	-	-	-	-
60	-	-	-	-	-	-	-	-
65	-	-	-	-	-	-	-	-

**Nominal performance at to = 7.2 °C, tc = 54.4 °C**

Cooling capacity	-	W
Power input	-	W
Current consumption	-	A
Mass flow	-	kg/h
C.O.P.	-	

to: Evaporating temperature at dew point

tc: Condensing temperature at dew point

Rating conditions : Superheat = 11.1 K, Subcooling = 8.3 K

**Pressure switch settings**

Maximum HP switch setting	28	bar(g)
Minimum LP switch setting	0.5	bar(g)
LP pump down setting	1.3	bar(g)

**Sound power data**

Sound power level	76	dB(A)
With accoustic hood	68	dB(A)

All performance data +/- 5%

Danfoss can accept no responsibility for possible errors in catalogues, brochures and other printed material. Danfoss reserves the right to alter its products without notice. This also applies to products already on order provided that such alternations can be made without subsequential changes being necessary in specifications already agreed. All trademarks in this material are property of the respective companies. Danfoss and the Danfoss logotype are trademarks of Danfoss A/S. All rights reserved.

**Performance data at 60 Hz, EN 12900 rating conditions**
**R22**

Cond. temp. in °C (tc)	Evaporating temperature in °C (to)							
	-20	-15	-10	-5	0	5	10	15

**Cooling capacity in W**

30	-	-	-	-	-	-	-	-
35	-	-	-	-	-	-	-	-
40	-	-	-	-	-	-	-	-
45	-	-	-	-	-	-	-	-
50	-	-	-	-	-	-	-	-
55	-	-	-	-	-	-	-	-
60	-	-	-	-	-	-	-	-
65	-	-	-	-	-	-	-	-

**Power input in W**

30	-	-	-	-	-	-	-	-
35	-	-	-	-	-	-	-	-
40	-	-	-	-	-	-	-	-
45	-	-	-	-	-	-	-	-
50	-	-	-	-	-	-	-	-
55	-	-	-	-	-	-	-	-
60	-	-	-	-	-	-	-	-
65	-	-	-	-	-	-	-	-

**Current consumption in A**

30	-	-	-	-	-	-	-	-
35	-	-	-	-	-	-	-	-
40	-	-	-	-	-	-	-	-
45	-	-	-	-	-	-	-	-
50	-	-	-	-	-	-	-	-
55	-	-	-	-	-	-	-	-
60	-	-	-	-	-	-	-	-
65	-	-	-	-	-	-	-	-

**Mass flow in kg/h**

30	-	-	-	-	-	-	-	-
35	-	-	-	-	-	-	-	-
40	-	-	-	-	-	-	-	-
45	-	-	-	-	-	-	-	-
50	-	-	-	-	-	-	-	-
55	-	-	-	-	-	-	-	-
60	-	-	-	-	-	-	-	-
65	-	-	-	-	-	-	-	-

**Coefficient of performance (C.O.P.)**

30	-	-	-	-	-	-	-	-
35	-	-	-	-	-	-	-	-
40	-	-	-	-	-	-	-	-
45	-	-	-	-	-	-	-	-
50	-	-	-	-	-	-	-	-
55	-	-	-	-	-	-	-	-
60	-	-	-	-	-	-	-	-
65	-	-	-	-	-	-	-	-

**Nominal performance at to = 5 °C, tc = 50 °C**

Cooling capacity	-	W
Power input	-	W
Current consumption	-	A
Mass flow	-	kg/h
C.O.P.	-	

to: Evaporating temperature at dew point

tc: Condensing temperature at dew point

Rating conditions : Superheat = 10 K , Subcooling = 0 K

**Pressure switch settings**

Maximum HP switch setting	28	bar(g)
Minimum LP switch setting	0.5	bar(g)
LP pump down setting	1.3	bar(g)

**Sound power data**

Sound power level	79	dB(A)
With accoustic hood	71	dB(A)

All performance data +/- 5%

Danfoss can accept no responsibility for possible errors in catalogues, brochures and other printed material. Danfoss reserves the right to alter its products without notice. This also applies to products already on order provided that such alternations can be made without subsequential changes being necessary in specifications already agreed. All trademarks in this material are property of the respective companies. Danfoss and the Danfoss logotype are trademarks of Danfoss A/S. All rights reserved.

**Performance data at 60 Hz, ARI rating conditions**
**R22**

Cond. temp. in °C (tc)	Evaporating temperature in °C (to)							
	-20	-15	-10	-5	0	5	10	15

**Cooling capacity in W**

30	-	-	-	-	-	-	-	-
35	-	-	-	-	-	-	-	-
40	-	-	-	-	-	-	-	-
45	-	-	-	-	-	-	-	-
50	-	-	-	-	-	-	-	-
55	-	-	-	-	-	-	-	-
60	-	-	-	-	-	-	-	-
65	-	-	-	-	-	-	-	-

**Power input in W**

30	-	-	-	-	-	-	-	-
35	-	-	-	-	-	-	-	-
40	-	-	-	-	-	-	-	-
45	-	-	-	-	-	-	-	-
50	-	-	-	-	-	-	-	-
55	-	-	-	-	-	-	-	-
60	-	-	-	-	-	-	-	-
65	-	-	-	-	-	-	-	-

**Current consumption in A**

30	-	-	-	-	-	-	-	-
35	-	-	-	-	-	-	-	-
40	-	-	-	-	-	-	-	-
45	-	-	-	-	-	-	-	-
50	-	-	-	-	-	-	-	-
55	-	-	-	-	-	-	-	-
60	-	-	-	-	-	-	-	-
65	-	-	-	-	-	-	-	-

**Mass flow in kg/h**

30	-	-	-	-	-	-	-	-
35	-	-	-	-	-	-	-	-
40	-	-	-	-	-	-	-	-
45	-	-	-	-	-	-	-	-
50	-	-	-	-	-	-	-	-
55	-	-	-	-	-	-	-	-
60	-	-	-	-	-	-	-	-
65	-	-	-	-	-	-	-	-

**Coefficient of performance (C.O.P.)**

30	-	-	-	-	-	-	-	-
35	-	-	-	-	-	-	-	-
40	-	-	-	-	-	-	-	-
45	-	-	-	-	-	-	-	-
50	-	-	-	-	-	-	-	-
55	-	-	-	-	-	-	-	-
60	-	-	-	-	-	-	-	-
65	-	-	-	-	-	-	-	-

**Nominal performance at to = 7.2 °C, tc = 54.4 °C**

Cooling capacity	-	W
Power input	-	W
Current consumption	-	A
Mass flow	-	kg/h
C.O.P.	-	

to: Evaporating temperature at dew point

tc: Condensing temperature at dew point

Rating conditions : Superheat = 11.1 K , Subcooling = 8.3 K

**Pressure switch settings**

Maximum HP switch setting	28	bar(g)
Minimum LP switch setting	0.5	bar(g)
LP pump down setting	1.3	bar(g)

**Sound power data**

Sound power level	79	dB(A)
With accoustic hood	71	dB(A)

All performance data +/- 5%

Danfoss can accept no responsibility for possible errors in catalogues, brochures and other printed material. Danfoss reserves the right to alter its products without notice. This also applies to products already on order provided that such alternations can be made without subsequential changes being necessary in specifications already agreed. All trademarks in this material are property of the respective companies. Danfoss and the Danfoss logotype are trademarks of Danfoss A/S. All rights reserved.

