

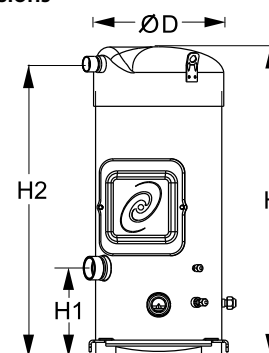
Datasheets

Danfoss scroll compressors **SM / SY / SZ / SH / WSH**



General Characteristics

Model number (on compressor nameplate)	SM160T4RC	SM160T4CC
Code number for Singlepack*	SM160-4RAI	SM160-4CBI
Code number for Industrial pack**	SM160-4RAM	SM160-4CBM
Drawing number	8551120b	8551055c
Suction and discharge connections	Rotolock	Brazed
Suction connection	2-1/4" Rotolock	1-5/8" ODF
Discharge connection	1-3/4" Rotolock	1-1/8" ODF
Suction connection with supplied sleeve	1-3/8" ODF	
Discharge connection with supplied sleeve	7/8" ODF	
Oil sight glass	Threaded	Threaded
Oil equalisation connection	3/8" flare SAE	3/8" flare SAE
Oil drain connection	1/4" flare	1/4" flare
LP gauge port	Schrader	Schrader
IPR valve	None	None
Swept volume	216.6 cm ³ /rev	
Displacement @ Nominal speed	37.7 m ³ /h @ 2900 rpm - 45.5 m ³ /h @ 3500 rpm	
Net weight	90 kg	
Oil charge	4 litre, Mineral - 160P	
Maximum system test pressure Low Side / High side	25 bar(g) / 32 bar(g)	
Maximum differential test pressure	24 bar	
Maximum number of starts per hour	12	
Refrigerant charge limit	12.5 kg	
Approved refrigerants	R22, R417A-160SZ	

Dimensions


D=266 mm

H=631 mm

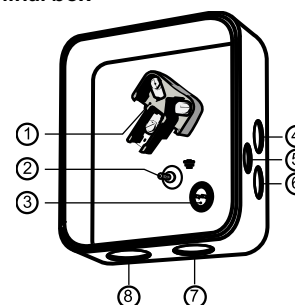
H1=180 mm

H2=596 mm

H3=- mm

Electrical Characteristics

Nominal voltage	380-400V/3/50Hz - 460V/3/60Hz
Voltage range	340-440 V @ 50Hz - 414-506 V @ 60Hz
Winding resistance (between phases) +/- 7% at 25°C	0.94 Ω
Maximum Must Trip current (MMT)	29 A
Locked Rotor Amps (LRA)	150 A
Motor protection	Internal thermostat, ext. overload protector needed

Terminal box


IP54 (with cable gland)

- 1: Power connection, 3 x 4.8 mm (3/16")
- 2: Earth M5
- 3: Thermostat connector
- 4: Knock-out Ø 22 mm (7/8") for 1/2" conduit
- 5: Knock-out Ø 16.5 mm (0.65")
- 6: Knock-out Ø 20.5 mm (0.81")
- 7: Double knock-out Ø 32.1 mm (1.26") & Ø 25.4 mm (1")
- 8: Double knock-out Ø 44 mm (1-3/4") for 1-1/4" conduit & Ø 34 mm (1-3/8") for 1" conduit

Recommended Installation torques

Suction Rotolock nut or valve	130 Nm
Discharge Rotolock nut or valve	110 Nm
Oil sight glass	50 Nm
Power connections / Earth connection	3 Nm / 2 Nm
Terminal box cover screws	2.3 Nm
Mounting bolts	21 Nm

Parts shipped with compressor

Mounting kit with grommets, bolts, nuts, sleeves and washers
Initial oil charge
Installation instructions

Approvals : CE certified, UL certified (file SA6873), -

*Singlepack: Compressor in cardboard box

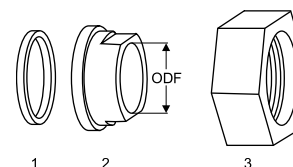
**Industrial pack: 6 Unboxed compressors on pallet (order per multiples of 6)

Rotolock accessories, suction side
Code no.

Solder sleeve, P08 (2-1/4" Rotolock, 1-3/8" ODF)	8153005
Solder sleeve, P03 (2-1/4" Rotolock, 1-5/8" ODF)	8153006
Rotolock valve, V08 (2-1/4" Rotolock, 1-3/8" ODF)	8168025
Rotolock valve, V03 (2-1/4" Rotolock, 1-5/8" ODF)	8168026
Gasket, 2-1/4"	8156133

Rotolock accessories, discharge side
Code no.

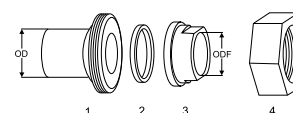
Solder sleeve, P07 (1-3/4" Rotolock, 7/8" ODF)	8153013
Solder sleeve, P02 (1-3/4" Rotolock, 1-1/8" ODF)	8153004
Angle adapter, C07 (1-3/4" Rotolock, 7/8" ODF)	8168008
Angle adapter, C02 (1-3/4" Rotolock, 1-1/8" ODF)	8168005
Rotolock valve, V07 (1-3/4" Rotolock, 7/8" ODF)	8168032
Rotolock valve, V02 (1-3/4" Rotolock, 1-1/8" ODF)	8168028
Gasket, 1-3/4"	8156132

Gaskets, sleeves and nuts


- 1: Gasket
- 2: Solder sleeve
- 3: Rotolock nut

Rotolock accessories, sets
Code no.

Solder sleeve adapter set, (2-1/4" Rotolock, 1-5/8" ODF), (1-3/4" Rotolock, 1"1/8 ODF)	7765028
Valve set, V08 (2-1/4"~1-3/8"), V07 (1-3/4"~7/8")	7703010
Gasket set, 1-1/4", 1-3/4", 2-1/4", OSG gaskets black & white	8156013

Solder sleeve adapter set

Oil / lubricants
Code no.

Mineral oil, 160P, 2 litre can	7754001
Mineral oil, 160P, 5 litre can	7754002

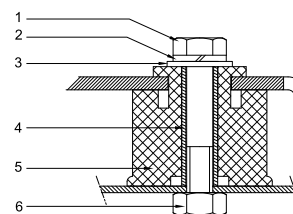
Crankcase heaters
Code no.

Surface sump heater + bottom insulation, 48 W, 24 V, CE mark, UL	120Z0363
Surface sump heater + bottom insulation, 48 W, 230 V, CE mark, UL	120Z0384
Surface sump heater + bottom insulation, 48 W, 400 V, CE mark, UL	120Z0385
Surface sump heater + bottom insulation, 48 W, 460 V, CE mark, UL	120Z0386
Belt type crankcase heater, 65 W, 460 V, CE mark, UL	120Z0466
Belt type crankcase heater, 65 W, 230 V, CE mark, UL	7773107
Belt type crankcase heater, 65 W, 400 V, CE mark, UL	7773117
Belt type crankcase heater, 65 W, 400 V, CE mark, UL	120Z0039

- 1: Rotolock adapter (Suc & Dis)
- 2: Gasket (Suc & Dis)
- 3: Solder sleeve (Suc & Dis)
- 4: Rotolock nut (Suc & Dis)

Miscellaneous accessories
Code no.

Electronic soft start kit, MCI 25 C	7705007
Acoustic hood for scroll compressor S160	7755008
Bottom insulation for scroll compressor	120Z0357
Discharge thermostat kit	7750009

Mounting kit

Spare parts
Code no.

Mounting kit for 1 scroll compressor including 4 grommets, 4 sleeves, 4 bolts, 4 washers	8156138
Mounting kit for 1 scroll compressor including 4 grommets, 4 sleeves, 4 bolts, 4 washers, 2 rotolock nuts, 2 solder sleeves, 2 gaskets	8156147
Oil sight glass with gaskets (black & white)	8156019
Gasket for oil sight glass (white teflon)	8156129
Terminal box 186 x 198 mm, incl cover	8156139
T block connector 60 x 75 mm	8173021

- 1: Bolt (4x)
- 2: Lock washer (4x)
- 3: Flat washer (4x)
- 4: Sleeve (4x)
- 5: Grommet (4x)
- 6: Nut (4x)

Performance data at 50 Hz, EN 12900 rating conditions
R22

Cond. temp. in °C (tc)	Evaporating temperature in °C (to)							
	-20	-15	-10	-5	0	5	10	15

Cooling capacity in W

30	15 338	19 243	23 794	29 048	35 065	41 902	49 619	58 275	-
35	14 593	18 420	22 868	27 997	33 864	40 529	48 049	56 483	-
40	13 756	17 489	21 820	26 807	32 510	38 985	46 293	54 490	-
45	-	16 435	20 633	25 464	30 986	37 257	44 335	52 279	-
50	-	-	19 294	23 952	29 277	35 327	42 160	49 834	-
55	-	-	-	22 258	27 370	33 183	39 753	47 140	-
60	-	-	-	-	25 250	30 808	37 099	44 180	-
65	-	-	-	-	22 904	28 189	34 181	40 939	-

Power input in W

30	6 945	7 025	7 111	7 203	7 299	7 398	7 500	7 604	-
35	7 619	7 697	7 780	7 868	7 959	8 053	8 150	8 247	-
40	8 389	8 464	8 544	8 628	8 714	8 803	8 892	8 983	-
45	-	9 338	9 413	9 492	9 573	9 655	9 738	9 821	-
50	-	-	10 398	10 471	10 546	10 622	10 697	10 772	-
55	-	-	-	11 575	11 643	11 711	11 779	11 845	-
60	-	-	-	-	12 874	12 935	12 994	13 050	-
65	-	-	-	-	14 249	14 301	14 351	14 398	-

Current consumption in A

30	13.79	13.88	13.97	14.07	14.16	14.24	14.32	14.39	-
35	14.62	14.71	14.80	14.90	14.99	15.07	15.15	15.22	-
40	15.59	15.68	15.77	15.87	15.96	16.04	16.12	16.18	-
45	-	16.81	16.90	16.99	17.08	17.16	17.24	17.31	-
50	-	-	18.21	18.30	18.38	18.46	18.54	18.60	-
55	-	-	-	19.79	19.87	19.95	20.02	20.09	-
60	-	-	-	-	21.57	21.64	21.71	21.78	-
65	-	-	-	-	23.48	23.56	23.62	23.68	-

Mass flow in kg/h

30	330	409	499	602	718	848	993	1 155	-
35	326	407	498	602	719	850	997	1 161	-
40	321	402	495	600	718	851	999	1 163	-
45	-	395	489	595	714	848	997	1 163	-
50	-	-	479	586	706	841	991	1 158	-
55	-	-	-	572	693	829	980	1 147	-
60	-	-	-	-	674	810	962	1 131	-
65	-	-	-	-	647	785	937	1 106	-

Coefficient of performance (C.O.P.)

30	2.21	2.74	3.35	4.03	4.80	5.66	6.62	7.66	-
35	1.92	2.39	2.94	3.56	4.25	5.03	5.90	6.85	-
40	1.64	2.07	2.55	3.11	3.73	4.43	5.21	6.07	-
45	-	1.76	2.19	2.68	3.24	3.86	4.55	5.32	-
50	-	-	1.86	2.29	2.78	3.33	3.94	4.63	-
55	-	-	-	1.92	2.35	2.83	3.37	3.98	-
60	-	-	-	-	1.96	2.38	2.86	3.39	-
65	-	-	-	-	1.61	1.97	2.38	2.84	-

Nominal performance at to = 5 °C, tc = 50 °C

Cooling capacity	35 327	W
Power input	10 622	W
Current consumption	18.46	A
Mass flow	841	kg/h
C.O.P.	3.33	

Pressure switch settings

Maximum HP switch setting	28	bar(g)
Minimum LP switch setting	0.5	bar(g)
LP pump down setting	1.3	bar(g)

Sound power data

Sound power level	79.5	dB(A)
With acoustic hood	72	dB(A)

to: Evaporating temperature at dew point

tc: Condensing temperature at dew point

Rating conditions : Superheat = 10 K , Subcooling = 0 K

All performance data +/- 5%

Danfoss can accept no responsibility for possible errors in catalogues, brochures and other printed material. Danfoss reserves the right to alter its products without notice. This also applies to products already on order provided that such alternations can be made without subsequential changes being necessary in specifications already agreed. All trademarks in this material are property of the respective companies. Danfoss and the Danfoss logotype are trademarks of Danfoss A/S. All rights reserved.

Performance data at 50 Hz, ARI rating conditions

R22

Cond. temp. in °C (tc)	Evaporating temperature in °C (to)							
	-20	-15	-10	-5	0	5	10	15

Cooling capacity in W

30	16 276	20 405	25 211	30 756	37 100	44 304	52 429	61 535	-
35	15 541	19 599	24 312	29 741	35 946	42 988	50 928	59 827	-
40	14 707	18 680	23 285	28 582	34 633	41 499	49 239	57 915	-
45	-	17 632	22 113	27 264	33 146	39 819	47 344	55 782	-
50	-	-	20 781	25 770	31 467	37 932	45 227	53 412	-
55	-	-	-	24 083	29 580	35 823	42 872	50 788	-
60	-	-	-	-	27 469	33 473	40 262	47 894	-
65	-	-	-	-	25 116	30 868	37 380	44 714	-

Power input in W

30	6 945	7 025	7 111	7 203	7 299	7 398	7 500	7 604	-
35	7 619	7 697	7 780	7 868	7 959	8 053	8 150	8 247	-
40	8 389	8 464	8 544	8 628	8 714	8 803	8 892	8 983	-
45	-	9 338	9 413	9 492	9 573	9 655	9 738	9 821	-
50	-	-	10 398	10 471	10 546	10 622	10 697	10 772	-
55	-	-	-	11 575	11 643	11 711	11 779	11 845	-
60	-	-	-	-	12 874	12 935	12 994	13 050	-
65	-	-	-	-	14 249	14 301	14 351	14 398	-

Current consumption in A

30	13.79	13.88	13.97	14.07	14.16	14.24	14.32	14.39	-
35	14.62	14.71	14.80	14.90	14.99	15.07	15.15	15.22	-
40	15.59	15.68	15.77	15.87	15.96	16.04	16.12	16.18	-
45	-	16.81	16.90	16.99	17.08	17.16	17.24	17.31	-
50	-	-	18.21	18.30	18.38	18.46	18.54	18.60	-
55	-	-	-	19.79	19.87	19.95	20.02	20.09	-
60	-	-	-	-	21.57	21.64	21.71	21.78	-
65	-	-	-	-	23.48	23.56	23.62	23.68	-

Mass flow in kg/h

30	328	407	497	599	714	843	988	1 149	-
35	325	404	495	599	715	846	992	1 154	-
40	319	400	492	597	714	846	993	1 157	-
45	-	393	486	592	710	843	991	1 156	-
50	-	-	476	583	702	836	985	1 151	-
55	-	-	-	569	689	824	974	1 141	-
60	-	-	-	-	670	806	957	1 124	-
65	-	-	-	-	644	780	932	1 100	-

Coefficient of performance (C.O.P.)

30	2.34	2.90	3.55	4.27	5.08	5.99	6.99	8.09	-
35	2.04	2.55	3.12	3.78	4.52	5.34	6.25	7.25	-
40	1.75	2.21	2.73	3.31	3.97	4.71	5.54	6.45	-
45	-	1.89	2.35	2.87	3.46	4.12	4.86	5.68	-
50	-	-	2.00	2.46	2.98	3.57	4.23	4.96	-
55	-	-	-	2.08	2.54	3.06	3.64	4.29	-
60	-	-	-	-	2.13	2.59	3.10	3.67	-
65	-	-	-	-	1.76	2.16	2.60	3.11	-

Nominal performance at to = 7.2 °C, tc = 54.4 °C

Cooling capacity	39 100	W
Power input	11 604	W
Current consumption	19.80	A
Mass flow	890	kg/h
C.O.P.	3.37	

Pressure switch settings

Maximum HP switch setting	28	bar(g)
Minimum LP switch setting	0.5	bar(g)
LP pump down setting	1.3	bar(g)

Sound power data

Sound power level	79.5	dB(A)
With acoustic hood	72	dB(A)

to: Evaporating temperature at dew point

tc: Condensing temperature at dew point

Rating conditions : Superheat = 11.1 K , Subcooling = 8.3 K

All performance data +/- 5%

Danfoss can accept no responsibility for possible errors in catalogues, brochures and other printed material. Danfoss reserves the right to alter its products without notice. This also applies to products already on order provided that such alternations can be made without subsequential changes being necessary in specifications already agreed. All trademarks in this material are property of the respective companies. Danfoss and the Danfoss logotype are trademarks of Danfoss A/S. All rights reserved.

Performance data at 60 Hz, EN 12900 rating conditions

R22

Cond. temp. in °C (tc)	Evaporating temperature in °C (to)							
	-20	-15	-10	-5	0	5	10	15

Cooling capacity in W

30	18 904	23 674	29 209	35 574	42 835	51 057	60 306	70 646	-
35	18 074	22 736	28 135	34 336	41 404	49 403	58 399	68 458	-
40	17 134	21 671	26 915	32 932	39 788	47 545	56 271	66 029	-
45	-	20 463	25 534	31 350	37 973	45 471	53 906	63 344	-
50	-	-	23 980	29 574	35 947	43 164	51 290	60 388	-
55	-	-	-	27 592	33 695	40 613	48 408	57 146	-
60	-	-	-	-	31 205	37 802	45 247	53 603	-
65	-	-	-	-	28 462	34 718	41 790	49 742	-

Power input in W

30	8 377	8 548	8 716	8 876	9 024	9 156	9 268	9 355	-
35	9 198	9 369	9 538	9 698	9 848	9 981	10 094	10 182	-
40	10 114	10 286	10 455	10 617	10 767	10 901	11 015	11 105	-
45	-	11 307	11 477	11 639	11 790	11 926	12 041	12 132	-
50	-	-	12 611	12 774	12 927	13 063	13 180	13 273	-
55	-	-	-	14 031	14 185	14 323	14 441	14 536	-
60	-	-	-	-	15 573	15 712	15 832	15 928	-
65	-	-	-	-	17 100	17 241	17 363	17 461	-

Current consumption in A

30	13.33	13.54	13.74	13.93	14.10	14.24	14.35	14.42	-
35	14.18	14.39	14.59	14.79	14.96	15.11	15.23	15.31	-
40	15.18	15.39	15.60	15.80	15.98	16.14	16.27	16.36	-
45	-	16.57	16.78	16.99	17.18	17.34	17.48	17.59	-
50	-	-	18.15	18.37	18.57	18.74	18.89	19.01	-
55	-	-	-	19.96	20.17	20.36	20.52	20.65	-
60	-	-	-	-	22.00	22.20	22.37	22.52	-
65	-	-	-	-	24.07	24.29	24.47	24.63	-

Mass flow in kg/h

30	407	503	613	737	876	1 033	1 207	1 401	-
35	405	502	613	738	879	1 037	1 212	1 407	-
40	400	499	610	737	879	1 038	1 214	1 410	-
45	-	492	605	732	875	1 035	1 212	1 409	-
50	-	-	595	723	867	1 027	1 206	1 403	-
55	-	-	-	709	853	1 014	1 193	1 391	-
60	-	-	-	-	833	994	1 173	1 371	-
65	-	-	-	-	805	966	1 146	1 344	-

Coefficient of performance (C.O.P.)

30	2.26	2.77	3.35	4.01	4.75	5.58	6.51	7.55	-
35	1.97	2.43	2.95	3.54	4.20	4.95	5.79	6.72	-
40	1.69	2.11	2.57	3.10	3.70	4.36	5.11	5.95	-
45	-	1.81	2.22	2.69	3.22	3.81	4.48	5.22	-
50	-	-	1.90	2.32	2.78	3.30	3.89	4.55	-
55	-	-	-	1.97	2.38	2.84	3.35	3.93	-
60	-	-	-	-	2.00	2.41	2.86	3.37	-
65	-	-	-	-	1.66	2.01	2.41	2.85	-

Nominal performance at to = 5 °C, tc = 50 °C

Cooling capacity	43 164	W
Power input	13 063	W
Current consumption	18.74	A
Mass flow	1 027	kg/h
C.O.P.	3.30	

Pressure switch settings

Maximum HP switch setting	28	bar(g)
Minimum LP switch setting	0.5	bar(g)
LP pump down setting	1.3	bar(g)

Sound power data

Sound power level	84	dB(A)
With acoustic hood	76	dB(A)

to: Evaporating temperature at dew point

tc: Condensing temperature at dew point

Rating conditions : Superheat = 10 K , Subcooling = 0 K

All performance data +/- 5%

Danfoss can accept no responsibility for possible errors in catalogues, brochures and other printed material. Danfoss reserves the right to alter its products without notice. This also applies to products already on order provided that such alternations can be made without subsequential changes being necessary in specifications already agreed. All trademarks in this material are property of the respective companies. Danfoss and the Danfoss logotype are trademarks of Danfoss A/S. All rights reserved.

Performance data at 60 Hz, ARI rating conditions
R22

Cond. temp. in °C (tc)	Evaporating temperature in °C (to)							
	-20	-15	-10	-5	0	5	10	15

Cooling capacity in W

30	20 061	25 103	30 948	37 666	45 322	53 984	63 721	74 599	-
35	19 247	24 192	29 911	36 474	43 948	52 401	61 899	72 511	-
40	18 319	23 147	28 722	35 113	42 387	50 611	59 852	70 179	-
45	-	21 953	27 366	33 566	40 621	48 598	57 565	67 589	-
50	-	-	25 827	31 818	38 636	46 348	55 021	64 724	-
55	-	-	-	29 854	36 416	43 844	52 206	61 569	-
60	-	-	-	-	33 946	41 073	49 104	58 109	-
65	-	-	-	-	31 211	38 017	45 701	54 329	-

Power input in W

30	8 377	8 548	8 716	8 876	9 024	9 156	9 268	9 355	-
35	9 198	9 369	9 538	9 698	9 848	9 981	10 094	10 182	-
40	10 114	10 286	10 455	10 617	10 767	10 901	11 015	11 105	-
45	-	11 307	11 477	11 639	11 790	11 926	12 041	12 132	-
50	-	-	12 611	12 774	12 927	13 063	13 180	13 273	-
55	-	-	-	14 031	14 185	14 323	14 441	14 536	-
60	-	-	-	-	15 573	15 712	15 832	15 928	-
65	-	-	-	-	17 100	17 241	17 363	17 461	-

Current consumption in A

30	13.33	13.54	13.74	13.93	14.10	14.24	14.35	14.42	-
35	14.18	14.39	14.59	14.79	14.96	15.11	15.23	15.31	-
40	15.18	15.39	15.60	15.80	15.98	16.14	16.27	16.36	-
45	-	16.57	16.78	16.99	17.18	17.34	17.48	17.59	-
50	-	-	18.15	18.37	18.57	18.74	18.89	19.01	-
55	-	-	-	19.96	20.17	20.36	20.52	20.65	-
60	-	-	-	-	22.00	22.20	22.37	22.52	-
65	-	-	-	-	24.07	24.29	24.47	24.63	-

Mass flow in kg/h

30	405	501	609	733	872	1 027	1 200	1 393	-
35	403	499	610	734	874	1 031	1 205	1 399	-
40	398	496	607	733	874	1 032	1 208	1 402	-
45	-	489	602	728	871	1 029	1 206	1 401	-
50	-	-	592	719	862	1 022	1 199	1 395	-
55	-	-	-	705	849	1 009	1 186	1 383	-
60	-	-	-	-	828	989	1 167	1 363	-
65	-	-	-	-	800	961	1 139	1 336	-

Coefficient of performance (C.O.P.)

30	2.39	2.94	3.55	4.24	5.02	5.90	6.88	7.97	-
35	2.09	2.58	3.14	3.76	4.46	5.25	6.13	7.12	-
40	1.81	2.25	2.75	3.31	3.94	4.64	5.43	6.32	-
45	-	1.94	2.38	2.88	3.45	4.08	4.78	5.57	-
50	-	-	2.05	2.49	2.99	3.55	4.17	4.88	-
55	-	-	-	2.13	2.57	3.06	3.62	4.24	-
60	-	-	-	-	2.18	2.61	3.10	3.65	-
65	-	-	-	-	1.83	2.21	2.63	3.11	-

Nominal performance at to = 7.2 °C, tc = 54.4 °C

Cooling capacity	47 735	W
Power input	14 220	W
Current consumption	20.22	A
Mass flow	1 086	kg/h
C.O.P.	3.36	

Pressure switch settings

Maximum HP switch setting	28	bar(g)
Minimum LP switch setting	0.5	bar(g)
LP pump down setting	1.3	bar(g)

Sound power data

Sound power level	84	dB(A)
With acoustic hood	76	dB(A)

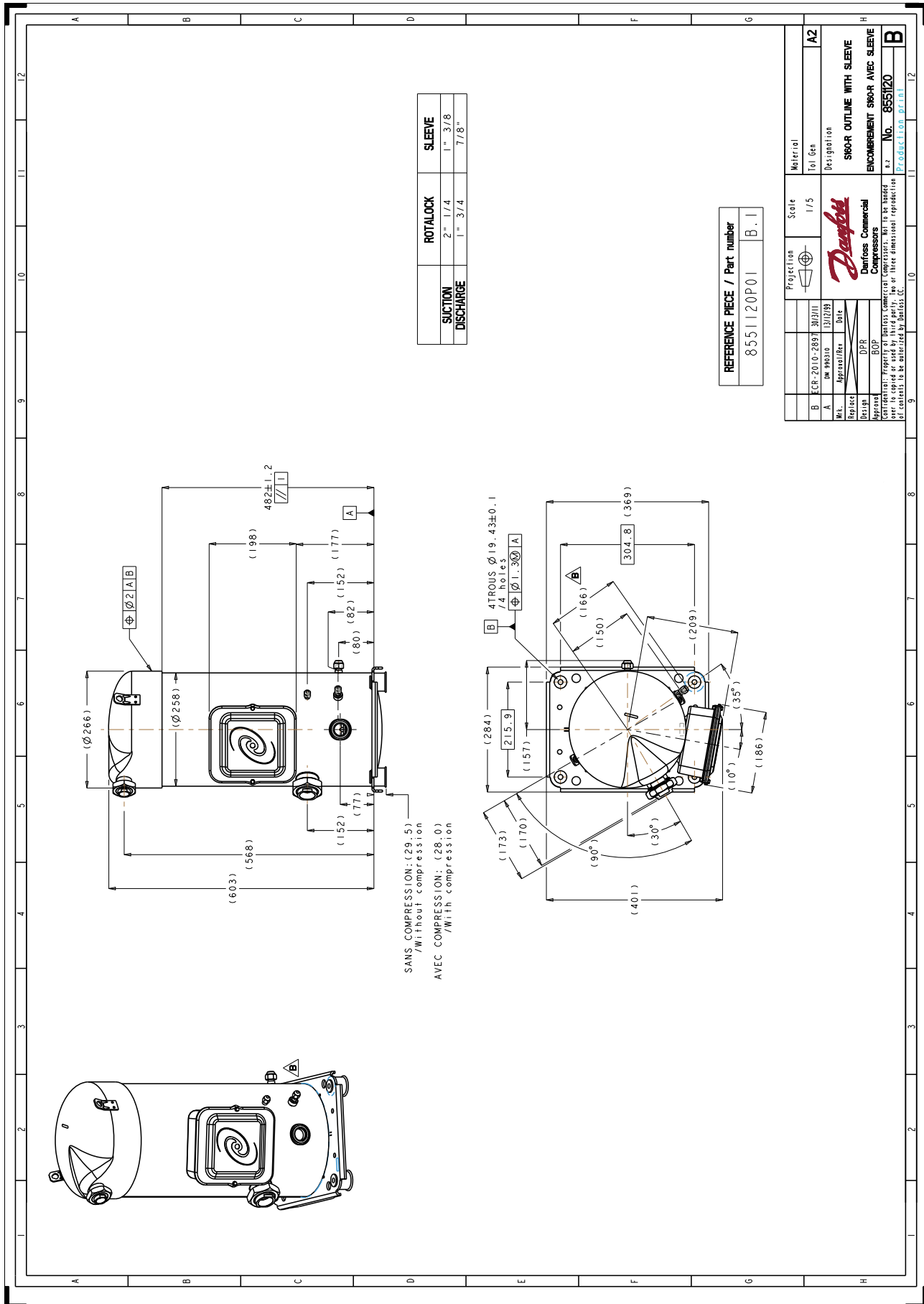
to: Evaporating temperature at dew point

tc: Condensing temperature at dew point

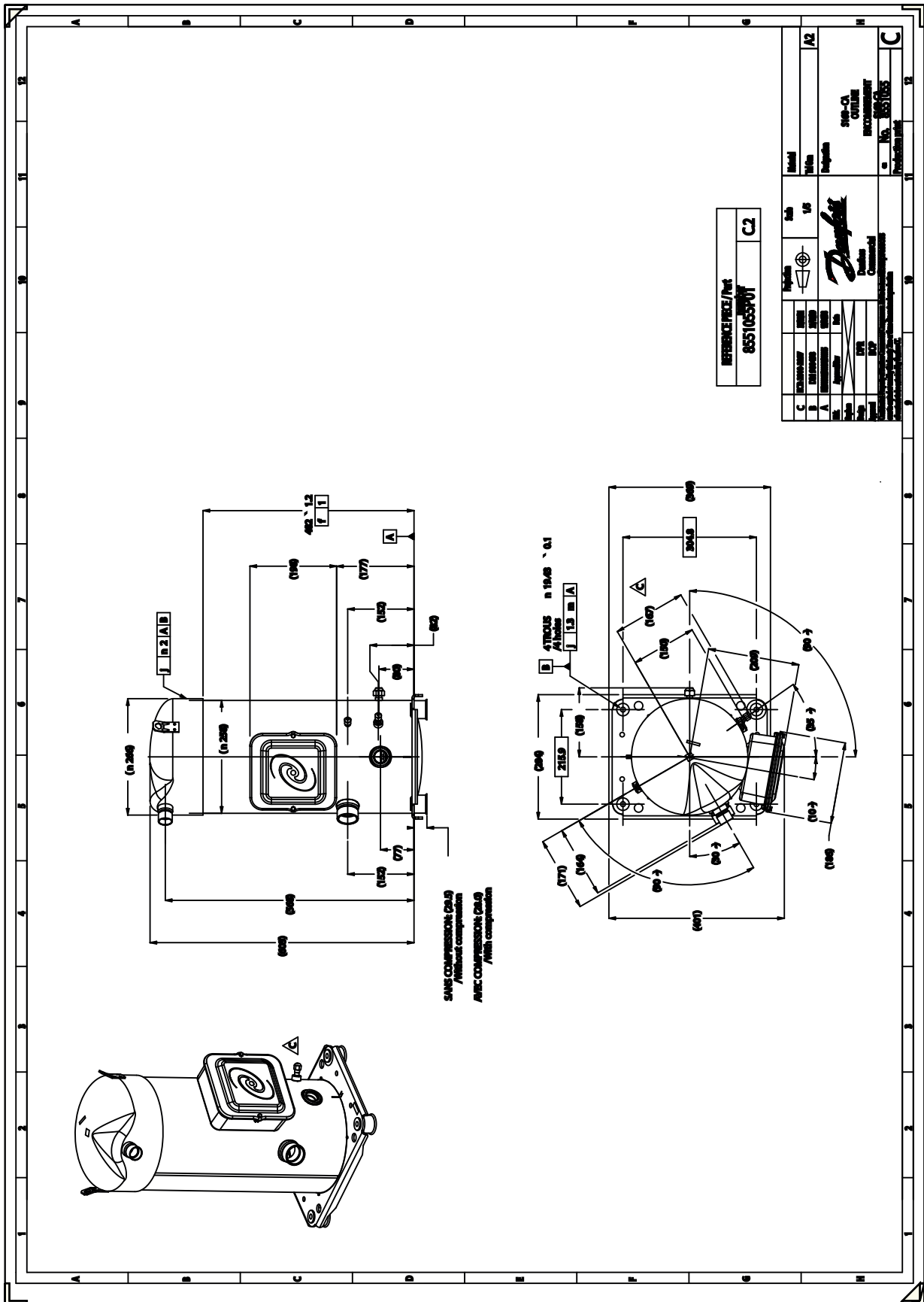
Rating conditions : Superheat = 11.1 K , Subcooling = 8.3 K

All performance data +/- 5%

Danfoss can accept no responsibility for possible errors in catalogues, brochures and other printed material. Danfoss reserves the right to alter its products without notice. This also applies to products already on order provided that such alternations can be made without subsequential changes being necessary in specifications already agreed. All trademarks in this material are property of the respective companies. Danfoss and the Danfoss logotype are trademarks of Danfoss A/S. All rights reserved.



Danfoss can accept no responsibility for possible errors in catalogues, brochures and other printed material. Danfoss reserves the right to alter its products without notice. This also applies to products already on order provided that such alternations can be made without subsequential changes being necessary in specifications already agreed. All trademarks in this material are property of the respective companies. Danfoss, the Danfoss logotype and Maneurop are trademarks of Danfoss A/S. All rights reserved.



Danfoss can accept no responsibility for possible errors in catalogues, brochures and other printed material. Danfoss reserves the right to alter its products without notice. This also applies to products already on order provided that such alternations can be made without subsequential changes being necessary in specifications already agreed. All trademarks in this material are property of the respective companies. Danfoss, the Danfoss logotype and Maneurop are trademarks of Danfoss A/S. All rights reserved.