

Datasheets

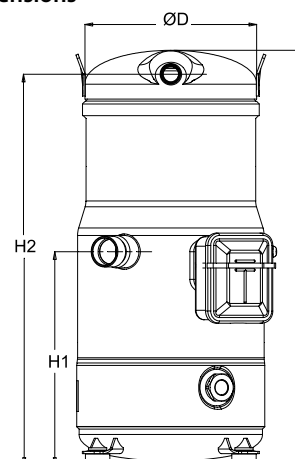
Danfoss scroll compressors **SM / SY / SZ / SH / WSH**



General Characteristics

Model number (on compressor nameplate)		SZ147A4ALB
Code number for Singlepack*		120H1096
Code number for Industrial pack**		120H1097
Drawing number		8560072b
Suction and discharge connections		Brazed
Suction connection		1-3/8" ODF
Discharge connection		7/8" ODF
Oil sight glass		Threaded
Oil equalisation connection		1-3/4" Rotolock
Oil drain connection		None
LP gauge port		Schrader
IPR valve		None
Swept volume		193.5 cm ³ /rev
Displacement @ Nominal speed		33.7 m ³ /h @ 2900 rpm - 40.6 m ³ /h @ 3500 rpm
Net weight		67 kg
Oil charge		3.3 litre, POE - 160SZ
Maximum system test pressure Low Side / High side		25 bar(g) / 32 bar(g)
Maximum differential test pressure		24 bar
Maximum number of starts per hour		12
Refrigerant charge limit		7.9 kg
Approved refrigerants		R407C, R134a

Dimensions

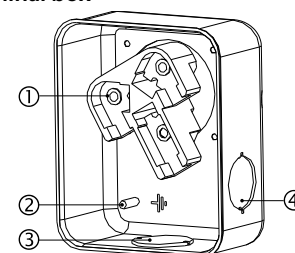


D=243 mm
H=542.5 mm
H1=277.8 mm
H2=508.8 mm
H3=- mm

Electrical Characteristics

Nominal voltage	380-400V/3/50Hz - 460V/3/60Hz
Voltage range	342-440 V @ 50Hz - 414-506 V @ 60Hz
Winding resistance (between phases) +/- 7% at 25°C	0.92 Ω
Rated Load Amps (RLA)	20.7 A
Maximum Continuous Current (MCC)	29 A
Locked Rotor Amps (LRA)	147 A
Motor protection	Internal overload protector

Terminal box



IP54 (with cable gland)
1: Power connection, 3 x 4.8 mm (3/16")
2: Earth M4-12
3: Knock-out Ø 29 mm (1.14")
4: Knock-out Ø 25.5 mm (1.00")

Recommended Installation torques

Oil sight glass	50 Nm
Power connections / Earth connection	3 Nm / 2 Nm
Mounting bolts	15 Nm

Parts shipped with compressor

Mounting kit with grommets, bolts, nuts, sleeves and washers
Initial oil charge
Installation instructions

Approvals : CE certified, UL certified (file SA6873), -

*Singlepack: Compressor in cardboard box

**Industrial pack: 8 Unboxed compressors on pallet (order per multiples of 8)

Rotolock accessories, suction side	Code no.
Solder sleeve, P10 (1-3/4" Rotolock, 1-3/8" ODF)	8153003
Rotolock valve, V10 (1-3/4" Rotolock, 1-3/8" ODF)	8168022
Gasket, 1-3/4"	8156132

Rotolock accessories, discharge side	Code no.
Rotolock valve, V05 (1-1/4" Rotolock, 7/8" ODF)	8168030
Gasket, 1-3/4"	8156132

Rotolock accessories, sets	Code no.
Solder sleeve adapter set (1-3/4" Rotolock, 1-3/8" ODF), (1-1/4" Rotolock, 7/8" ODF)	120Z0405
Valve set, V10 (1-3/4"~1-3/8"), V05 (1-1/4"~7/8")	7703392
Gasket set, 1-1/4", 1-3/4", 2-1/4", OSG gaskets black & white	8156013

Oil / lubricants	Code no.
POE lubricant, 160SZ, 1 litre can	7754023
POE lubricant, 160SZ, 2.5 litre can	120Z0571

Crankcase heaters	Code no.
Surface sump heater, 80 W, 24 V, CE mark, UL	120Z0388
Surface sump heater, 80 W, 230 V, CE mark, UL	120Z0389
Surface sump heater, 80 W, 400 V, CE mark, UL	120Z0390
Surface sump heater, 80 W, 460 V, CE mark, UL	120Z0391

Miscellaneous accessories	Code no.
Acoustic hood for scroll compressor SH105-161 & SM124, SM147	120Z0035
Gasket, 1-3/4"	8156132
Discharge thermostat kit	7750009

Spare parts	Code no.
Mounting kit for 1 scroll compressor including 4 grommets, 4 sleeves, 4 bolts, 4 washers	120Z0066
Oil sight glass with gaskets (black & white)	8156019
Gasket for oil sight glass (white teflon)	8156129
Service kit for terminal box 96 x 115 mm, including 1 cover, 1 clamp	8156135
T block connector 52 x 57 mm	8173230

Performance data at 50 Hz, EN 12900 rating conditions

R407C

Cond. temp. in °C (tc)	Evaporating temperature in °C (to)							
	-20	-15	-10	-5	0	5	10	15

Cooling capacity in W

30	13 752	17 292	21 499	26 466	32 282	39 040	46 832	55 750	-
35	12 975	16 383	20 418	25 172	30 736	37 201	44 658	53 200	-
40	12 180	15 442	19 291	23 819	29 116	35 273	42 381	50 532	-
45	-	14 473	18 123	22 411	27 428	33 263	40 007	47 753	-
50	-	-	16 919	20 953	25 674	31 173	37 540	44 864	-
55	-	-	-	19 448	23 860	29 008	34 981	41 870	-
60	-	-	-	-	21 988	26 769	32 333	38 768	-
65	-	-	-	-	20 055	24 454	29 591	35 555	-

Power input in W

30	5 566	5 533	5 578	5 681	5 823	5 983	6 143	6 283	-
35	6 374	6 287	6 290	6 365	6 490	6 648	6 818	6 981	-
40	7 270	7 117	7 067	7 102	7 201	7 345	7 514	7 689	-
45	-	8 061	7 948	7 932	7 993	8 112	8 269	8 444	-
50	-	-	8 971	8 893	8 905	8 988	9 122	9 287	-
55	-	-	-	10 024	9 977	10 012	10 112	10 257	-
60	-	-	-	-	11 246	11 224	11 279	11 391	-
65	-	-	-	-	12 753	12 662	12 660	12 729	-

Current consumption in A

30	13.26	13.34	13.44	13.56	13.69	13.84	14.01	14.20	-
35	13.94	14.00	14.07	14.17	14.28	14.41	14.55	14.72	-
40	14.75	14.79	14.85	14.92	15.01	15.11	15.24	15.39	-
45	-	15.75	15.78	15.83	15.90	15.99	16.10	16.22	-
50	-	-	16.90	16.94	16.99	17.06	17.14	17.25	-
55	-	-	-	18.26	18.29	18.34	18.41	18.50	-
60	-	-	-	-	19.83	19.86	19.92	19.99	-
65	-	-	-	-	21.64	21.66	21.69	21.75	-

Mass flow in kg/h

30	289	358	438	531	638	760	900	1 058	-
35	286	356	436	528	635	757	896	1 054	-
40	283	352	432	525	631	753	891	1 048	-
45	-	349	429	520	626	747	884	1 040	-
50	-	-	424	515	620	740	876	1 031	-
55	-	-	-	509	613	732	867	1 020	-
60	-	-	-	-	605	723	856	1 008	-
65	-	-	-	-	597	712	845	995	-

Coefficient of performance (C.O.P.)

30	2.47	3.13	3.85	4.66	5.54	6.52	7.62	8.87	-
35	2.04	2.61	3.25	3.96	4.74	5.60	6.55	7.62	-
40	1.68	2.17	2.73	3.35	4.04	4.80	5.64	6.57	-
45	-	1.80	2.28	2.83	3.43	4.10	4.84	5.66	-
50	-	-	1.89	2.36	2.88	3.47	4.12	4.83	-
55	-	-	-	1.94	2.39	2.90	3.46	4.08	-
60	-	-	-	-	1.96	2.38	2.87	3.40	-
65	-	-	-	-	1.57	1.93	2.34	2.79	-

Nominal performance at to = 5 °C, tc = 50 °C

Cooling capacity	31 173	W
Power input	8 988	W
Current consumption	17.06	A
Mass flow	740	kg/h
C.O.P.	3.47	

Pressure switch settings

Maximum HP switch setting	29.5	bar(g)
Minimum LP switch setting	0.5	bar(g)
LP pump down setting	1	bar(g)

Sound power data

Sound power level	77	dB(A)
With acoustic hood	69	dB(A)

to: Evaporating temperature at dew point

tc: Condensing temperature at dew point

Rating conditions : Superheat = 10 K, Subcooling = 0 K

Tolerance according EN12900

Danfoss can accept no responsibility for possible errors in catalogues, brochures and other printed material. Danfoss reserves the right to alter its products without notice. This also applies to products already on order provided that such alternations can be made without subsequential changes being necessary in specifications already agreed. All trademarks in this material are property of the respective companies. Danfoss and the Danfoss logotype are trademarks of Danfoss A/S. All rights reserved.

Performance data at 50 Hz, ARI rating conditions
R407C

Cond. temp. in °C (tc)	Evaporating temperature in °C (to)							
	-20	-15	-10	-5	0	5	10	15

Cooling capacity in W

30	14 749	18 525	23 006	28 290	34 472	41 648	49 913	59 363	-
35	13 984	17 634	21 951	27 029	32 966	39 856	47 796	56 881	-
40	13 201	16 712	20 849	25 709	31 386	37 977	45 578	54 284	-
45	-	15 764	19 708	24 335	29 740	36 018	43 266	51 578	-
50	-	-	18 533	22 914	28 032	33 983	40 864	48 771	-
55	-	-	-	21 451	26 268	31 880	38 381	45 866	-
60	-	-	-	-	24 456	29 713	35 820	42 871	-
65	-	-	-	-	22 600	27 489	33 188	39 792	-

Power input in W

30	5 566	5 533	5 578	5 681	5 823	5 983	6 143	6 283	-
35	6 374	6 287	6 290	6 365	6 490	6 648	6 818	6 981	-
40	7 270	7 117	7 067	7 102	7 201	7 345	7 514	7 689	-
45	-	8 061	7 948	7 932	7 993	8 112	8 269	8 444	-
50	-	-	8 971	8 893	8 905	8 988	9 122	9 287	-
55	-	-	-	10 024	9 977	10 012	10 112	10 257	-
60	-	-	-	-	11 246	11 224	11 279	11 391	-
65	-	-	-	-	12 753	12 662	12 660	12 729	-

Current consumption in A

30	13.26	13.34	13.44	13.56	13.69	13.84	14.01	14.20	-
35	13.94	14.00	14.07	14.17	14.28	14.41	14.55	14.72	-
40	14.75	14.79	14.85	14.92	15.01	15.11	15.24	15.39	-
45	-	15.75	15.78	15.83	15.90	15.99	16.10	16.22	-
50	-	-	16.90	16.94	16.99	17.06	17.14	17.25	-
55	-	-	-	18.26	18.29	18.34	18.41	18.50	-
60	-	-	-	-	19.83	19.86	19.92	19.99	-
65	-	-	-	-	21.64	21.66	21.69	21.75	-

Mass flow in kg/h

30	288	356	436	528	634	756	895	1 052	-
35	285	354	433	526	631	753	891	1 047	-
40	282	351	430	522	627	748	886	1 042	-
45	-	347	426	518	622	742	879	1 034	-
50	-	-	422	512	616	736	871	1 025	-
55	-	-	-	506	609	727	862	1 014	-
60	-	-	-	-	602	718	851	1 002	-
65	-	-	-	-	593	708	840	989	-

Coefficient of performance (C.O.P.)

30	2.65	3.35	4.12	4.98	5.92	6.96	8.12	9.45	-
35	2.19	2.80	3.49	4.25	5.08	6.00	7.01	8.15	-
40	1.82	2.35	2.95	3.62	4.36	5.17	6.07	7.06	-
45	-	1.96	2.48	3.07	3.72	4.44	5.23	6.11	-
50	-	-	2.07	2.58	3.15	3.78	4.48	5.25	-
55	-	-	-	2.14	2.63	3.18	3.80	4.47	-
60	-	-	-	-	2.17	2.65	3.18	3.76	-
65	-	-	-	-	1.77	2.17	2.62	3.13	-

Nominal performance at to = 7.2 °C, tc = 54.4 °C

Cooling capacity	34 901	W
Power input	9 920	W
Current consumption	18.20	A
Mass flow	786	kg/h
C.O.P.	3.52	

Pressure switch settings

Maximum HP switch setting	29.5	bar(g)
Minimum LP switch setting	0.5	bar(g)
LP pump down setting	1	bar(g)

Sound power data

Sound power level	77	dB(A)
With acoustic hood	69	dB(A)

to: Evaporating temperature at dew point

tc: Condensing temperature at dew point

Rating conditions : Superheat = 11.1 K , Subcooling = 8.3 K

Tolerance according EN12900

Danfoss can accept no responsibility for possible errors in catalogues, brochures and other printed material. Danfoss reserves the right to alter its products without notice. This also applies to products already on order provided that such alternations can be made without subsequential changes being necessary in specifications already agreed. All trademarks in this material are property of the respective companies. Danfoss and the Danfoss logotype are trademarks of Danfoss A/S. All rights reserved.

Performance data at 50 Hz, EN 12900 rating conditions
R134a

Cond. temp. in °C (tc)	Evaporating temperature in °C (to)							
	-15	-10	-5	0	5	10	15	

Cooling capacity in W

35	10 166	12 869	16 104	19 943	24 459	29 725	35 812	-	-
40	9 556	12 169	15 281	18 966	23 295	28 342	34 178	-	-
45	8 929	11 443	14 425	17 946	22 080	26 899	32 476	-	-
50	8 287	10 693	13 535	16 885	20 815	25 399	30 707	-	-
55	-	9 921	12 615	15 784	19 502	23 841	28 874	-	-
60	-	-	11 665	14 646	18 143	22 229	26 976	-	-
65	-	-	-	13 471	16 739	20 563	25 017	-	-
70	-	-	-	12 261	15 291	18 846	22 997	-	-

Power input in W

35	4 358	4 421	4 462	4 504	4 575	4 701	4 906	-	-
40	4 820	4 894	4 933	4 963	5 010	5 099	5 257	-	-
45	5 337	5 427	5 472	5 496	5 526	5 587	5 705	-	-
50	5 911	6 025	6 082	6 108	6 127	6 167	6 252	-	-
55	-	6 690	6 767	6 801	6 817	6 842	6 902	-	-
60	-	-	7 530	7 579	7 599	7 617	7 657	-	-
65	-	-	-	8 445	8 477	8 494	8 523	-	-
70	-	-	-	9 402	9 452	9 476	9 500	-	-

Current consumption in A

35	13.51	13.14	12.88	12.73	12.67	12.69	12.80	-	-
40	13.50	13.24	13.07	12.99	12.99	13.05	13.18	-	-
45	13.66	13.50	13.41	13.39	13.43	13.52	13.66	-	-
50	14.00	13.93	13.91	13.94	14.01	14.11	14.24	-	-
55	-	14.54	14.57	14.63	14.72	14.83	14.94	-	-
60	-	-	15.41	15.49	15.58	15.68	15.76	-	-
65	-	-	-	16.52	16.61	16.67	16.71	-	-
70	-	-	-	17.73	17.80	17.82	17.80	-	-

Mass flow in kg/h

35	247	308	377	458	550	656	775	-	-
40	245	306	376	457	549	655	775	-	-
45	243	304	374	455	548	653	773	-	-
50	240	301	372	453	545	651	770	-	-
55	-	298	368	449	542	647	766	-	-
60	-	-	364	445	537	642	761	-	-
65	-	-	-	440	532	636	754	-	-
70	-	-	-	434	525	629	746	-	-

Coefficient of performance (C.O.P.)

35	2.33	2.91	3.61	4.43	5.35	6.32	7.30	-	-
40	1.98	2.49	3.10	3.82	4.65	5.56	6.50	-	-
45	1.67	2.11	2.64	3.27	4.00	4.81	5.69	-	-
50	1.40	1.77	2.23	2.76	3.40	4.12	4.91	-	-
55	-	1.48	1.86	2.32	2.86	3.48	4.18	-	-
60	-	-	1.55	1.93	2.39	2.92	3.52	-	-
65	-	-	-	1.60	1.97	2.42	2.94	-	-
70	-	-	-	1.30	1.62	1.99	2.42	-	-

Nominal performance at to = 5 °C, tc = 50 °C

Cooling capacity	20 815	W
Power input	6 127	W
Current consumption	14.01	A
Mass flow	545	kg/h
C.O.P.	3.40	

Pressure switch settings

Maximum HP switch setting	22.8	bar(g)
Minimum LP switch setting	0.9	bar(g)
LP pump down setting	0.9	bar(g)

Sound power data

Sound power level	77	dB(A)
With acoustic hood	69	dB(A)

to: Evaporating temperature at dew point

tc: Condensing temperature at dew point

Rating conditions : Superheat = 10 K , Subcooling = 0 K

Tolerance according EN12900

Danfoss can accept no responsibility for possible errors in catalogues, brochures and other printed material. Danfoss reserves the right to alter its products without notice. This also applies to products already on order provided that such alternations can be made without subsequential changes being necessary in specifications already agreed. All trademarks in this material are property of the respective companies. Danfoss and the Danfoss logotype are trademarks of Danfoss A/S. All rights reserved.

Performance data at 50 Hz, ARI rating conditions

R134a

Cond. temp. in °C (tc)	Evaporating temperature in °C (to)							
	-15	-10	-5	0	5	10	15	

Cooling capacity in W

35	11 011	13 915	17 385	21 496	26 324	31 945	38 433	-	-
40	10 407	13 227	16 580	20 542	25 190	30 598	36 843	-	-
45	9 784	12 512	15 740	19 545	24 003	29 191	35 183	-	-
50	9 146	11 773	14 868	18 507	22 768	27 726	33 458	-	-
55	-	11 011	13 964	17 430	21 484	26 206	31 670	-	-
60	-	-	13 032	16 316	20 157	24 633	29 822	-	-
65	-	-	-	15 168	18 788	23 013	27 918	-	-
70	-	-	-	13 992	17 384	21 349	25 966	-	-

Power input in W

35	4 358	4 421	4 462	4 504	4 575	4 701	4 906	-	-
40	4 820	4 894	4 933	4 963	5 010	5 099	5 257	-	-
45	5 337	5 427	5 472	5 496	5 526	5 587	5 705	-	-
50	5 911	6 025	6 082	6 108	6 127	6 167	6 252	-	-
55	-	6 690	6 767	6 801	6 817	6 842	6 902	-	-
60	-	-	7 530	7 579	7 599	7 617	7 657	-	-
65	-	-	-	8 445	8 477	8 494	8 523	-	-
70	-	-	-	9 402	9 452	9 476	9 500	-	-

Current consumption in A

35	13.51	13.14	12.88	12.73	12.67	12.69	12.80	-	-
40	13.50	13.24	13.07	12.99	12.99	13.05	13.18	-	-
45	13.66	13.50	13.41	13.39	13.43	13.52	13.66	-	-
50	14.00	13.93	13.91	13.94	14.01	14.11	14.24	-	-
55	-	14.54	14.57	14.63	14.72	14.83	14.94	-	-
60	-	-	15.41	15.49	15.58	15.68	15.76	-	-
65	-	-	-	16.52	16.61	16.67	16.71	-	-
70	-	-	-	17.73	17.80	17.82	17.80	-	-

Mass flow in kg/h

35	246	306	376	455	547	652	771	-	-
40	244	305	374	455	547	651	770	-	-
45	241	302	372	453	545	650	769	-	-
50	238	300	370	450	542	647	766	-	-
55	-	296	367	447	539	643	762	-	-
60	-	-	363	443	534	639	756	-	-
65	-	-	-	438	529	633	750	-	-
70	-	-	-	432	523	626	742	-	-

Coefficient of performance (C.O.P.)

35	2.53	3.15	3.90	4.77	5.75	6.80	7.83	-	-
40	2.16	2.70	3.36	4.14	5.03	6.00	7.01	-	-
45	1.83	2.31	2.88	3.56	4.34	5.23	6.17	-	-
50	1.55	1.95	2.44	3.03	3.72	4.50	5.35	-	-
55	-	1.65	2.06	2.56	3.15	3.83	4.59	-	-
60	-	-	1.73	2.15	2.65	3.23	3.89	-	-
65	-	-	-	1.80	2.22	2.71	3.28	-	-
70	-	-	-	1.49	1.84	2.25	2.73	-	-

Nominal performance at to = 7.2 °C, tc = 54.4 °C

Cooling capacity	23 644	W
Power input	6 739	W
Current consumption	14.67	A
Mass flow	584	kg/h
C.O.P.	3.51	

Pressure switch settings

Maximum HP switch setting	22.8	bar(g)
Minimum LP switch setting	0.9	bar(g)
LP pump down setting	0.9	bar(g)

Sound power data

Sound power level	77	dB(A)
With acoustic hood	69	dB(A)

to: Evaporating temperature at dew point

tc: Condensing temperature at dew point

Rating conditions : Superheat = 11.1 K , Subcooling = 8.3 K

Tolerance according EN12900

Danfoss can accept no responsibility for possible errors in catalogues, brochures and other printed material. Danfoss reserves the right to alter its products without notice. This also applies to products already on order provided that such alternations can be made without subsequential changes being necessary in specifications already agreed. All trademarks in this material are property of the respective companies. Danfoss and the Danfoss logotype are trademarks of Danfoss A/S. All rights reserved.

Performance data at 50 Hz, EN 12900 rating conditions
R134a

Cond. temp. in °C (tc)	Evaporating temperature in °C (to)							
	-15	-10	-5	0	5	10	15	

Cooling capacity in W

35	10 166	12 869	16 104	19 943	24 459	29 725	35 812	-	-
40	9 556	12 169	15 281	18 966	23 295	28 342	34 178	-	-
45	8 929	11 443	14 425	17 946	22 080	26 899	32 476	-	-
50	8 287	10 693	13 535	16 885	20 815	25 399	30 707	-	-
55	-	9 921	12 615	15 784	19 502	23 841	28 874	-	-
60	-	-	11 665	14 646	18 143	22 229	26 976	-	-
65	-	-	-	13 471	16 739	20 563	25 017	-	-
70	-	-	-	12 261	15 291	18 846	22 997	-	-

Power input in W

35	4 358	4 421	4 462	4 504	4 575	4 701	4 906	-	-
40	4 820	4 894	4 933	4 963	5 010	5 099	5 257	-	-
45	5 337	5 427	5 472	5 496	5 526	5 587	5 705	-	-
50	5 911	6 025	6 082	6 108	6 127	6 167	6 252	-	-
55	-	6 690	6 767	6 801	6 817	6 842	6 902	-	-
60	-	-	7 530	7 579	7 599	7 617	7 657	-	-
65	-	-	-	8 445	8 477	8 494	8 523	-	-
70	-	-	-	9 402	9 452	9 476	9 500	-	-

Current consumption in A

35	13.51	13.14	12.88	12.73	12.67	12.69	12.80	-	-
40	13.50	13.24	13.07	12.99	12.99	13.05	13.18	-	-
45	13.66	13.50	13.41	13.39	13.43	13.52	13.66	-	-
50	14.00	13.93	13.91	13.94	14.01	14.11	14.24	-	-
55	-	14.54	14.57	14.63	14.72	14.83	14.94	-	-
60	-	-	15.41	15.49	15.58	15.68	15.76	-	-
65	-	-	-	16.52	16.61	16.67	16.71	-	-
70	-	-	-	17.73	17.80	17.82	17.80	-	-

Mass flow in kg/h

35	247	308	377	458	550	656	775	-	-
40	245	306	376	457	549	655	775	-	-
45	243	304	374	455	548	653	773	-	-
50	240	301	372	453	545	651	770	-	-
55	-	298	368	449	542	647	766	-	-
60	-	-	364	445	537	642	761	-	-
65	-	-	-	440	532	636	754	-	-
70	-	-	-	434	525	629	746	-	-

Coefficient of performance (C.O.P.)

35	2.33	2.91	3.61	4.43	5.35	6.32	7.30	-	-
40	1.98	2.49	3.10	3.82	4.65	5.56	6.50	-	-
45	1.67	2.11	2.64	3.27	4.00	4.81	5.69	-	-
50	1.40	1.77	2.23	2.76	3.40	4.12	4.91	-	-
55	-	1.48	1.86	2.32	2.86	3.48	4.18	-	-
60	-	-	1.55	1.93	2.39	2.92	3.52	-	-
65	-	-	-	1.60	1.97	2.42	2.94	-	-
70	-	-	-	1.30	1.62	1.99	2.42	-	-

Nominal performance at to = 5 °C, tc = 50 °C

Cooling capacity	20 815	W
Power input	6 127	W
Current consumption	14.01	A
Mass flow	545	kg/h
C.O.P.	3.40	

Pressure switch settings

Maximum HP switch setting	22.8	bar(g)
Minimum LP switch setting	0.9	bar(g)
LP pump down setting	0.9	bar(g)

Sound power data

Sound power level	77	dB(A)
With acoustic hood	69	dB(A)

to: Evaporating temperature at dew point

tc: Condensing temperature at dew point

Rating conditions : Superheat = 10 K , Subcooling = 0 K

Tolerance according EN12900

Danfoss can accept no responsibility for possible errors in catalogues, brochures and other printed material. Danfoss reserves the right to alter its products without notice. This also applies to products already on order provided that such alternations can be made without subsequential changes being necessary in specifications already agreed. All trademarks in this material are property of the respective companies. Danfoss and the Danfoss logotype are trademarks of Danfoss A/S. All rights reserved.

Performance data at 50 Hz, ARI rating conditions

R134a

Cond. temp. in °C (tc)	Evaporating temperature in °C (to)							
	-15	-10	-5	0	5	10	15	

Cooling capacity in W

35	11 011	13 915	17 385	21 496	26 324	31 945	38 433	-	-
40	10 407	13 227	16 580	20 542	25 190	30 598	36 843	-	-
45	9 784	12 512	15 740	19 545	24 003	29 191	35 183	-	-
50	9 146	11 773	14 868	18 507	22 768	27 726	33 458	-	-
55	-	11 011	13 964	17 430	21 484	26 206	31 670	-	-
60	-	-	13 032	16 316	20 157	24 633	29 822	-	-
65	-	-	-	15 168	18 788	23 013	27 918	-	-
70	-	-	-	13 992	17 384	21 349	25 966	-	-

Power input in W

35	4 358	4 421	4 462	4 504	4 575	4 701	4 906	-	-
40	4 820	4 894	4 933	4 963	5 010	5 099	5 257	-	-
45	5 337	5 427	5 472	5 496	5 526	5 587	5 705	-	-
50	5 911	6 025	6 082	6 108	6 127	6 167	6 252	-	-
55	-	6 690	6 767	6 801	6 817	6 842	6 902	-	-
60	-	-	7 530	7 579	7 599	7 617	7 657	-	-
65	-	-	-	8 445	8 477	8 494	8 523	-	-
70	-	-	-	9 402	9 452	9 476	9 500	-	-

Current consumption in A

35	13.51	13.14	12.88	12.73	12.67	12.69	12.80	-	-
40	13.50	13.24	13.07	12.99	12.99	13.05	13.18	-	-
45	13.66	13.50	13.41	13.39	13.43	13.52	13.66	-	-
50	14.00	13.93	13.91	13.94	14.01	14.11	14.24	-	-
55	-	14.54	14.57	14.63	14.72	14.83	14.94	-	-
60	-	-	15.41	15.49	15.58	15.68	15.76	-	-
65	-	-	-	16.52	16.61	16.67	16.71	-	-
70	-	-	-	17.73	17.80	17.82	17.80	-	-

Mass flow in kg/h

35	246	306	376	455	547	652	771	-	-
40	244	305	374	455	547	651	770	-	-
45	241	302	372	453	545	650	769	-	-
50	238	300	370	450	542	647	766	-	-
55	-	296	367	447	539	643	762	-	-
60	-	-	363	443	534	639	756	-	-
65	-	-	-	438	529	633	750	-	-
70	-	-	-	432	523	626	742	-	-

Coefficient of performance (C.O.P.)

35	2.53	3.15	3.90	4.77	5.75	6.80	7.83	-	-
40	2.16	2.70	3.36	4.14	5.03	6.00	7.01	-	-
45	1.83	2.31	2.88	3.56	4.34	5.23	6.17	-	-
50	1.55	1.95	2.44	3.03	3.72	4.50	5.35	-	-
55	-	1.65	2.06	2.56	3.15	3.83	4.59	-	-
60	-	-	1.73	2.15	2.65	3.23	3.89	-	-
65	-	-	-	1.80	2.22	2.71	3.28	-	-
70	-	-	-	1.49	1.84	2.25	2.73	-	-

Nominal performance at to = 7.2 °C, tc = 54.4 °C

Cooling capacity	23 644	W
Power input	6 739	W
Current consumption	14.67	A
Mass flow	584	kg/h
C.O.P.	3.51	

Pressure switch settings

Maximum HP switch setting	22.8	bar(g)
Minimum LP switch setting	0.9	bar(g)
LP pump down setting	0.9	bar(g)

Sound power data

Sound power level	77	dB(A)
With acoustic hood	69	dB(A)

to: Evaporating temperature at dew point

tc: Condensing temperature at dew point

Rating conditions : Superheat = 11.1 K , Subcooling = 8.3 K

Tolerance according EN12900

Danfoss can accept no responsibility for possible errors in catalogues, brochures and other printed material. Danfoss reserves the right to alter its products without notice. This also applies to products already on order provided that such alternations can be made without subsequential changes being necessary in specifications already agreed. All trademarks in this material are property of the respective companies. Danfoss and the Danfoss logotype are trademarks of Danfoss A/S. All rights reserved.

Performance data at 50 Hz, EN 12900 rating conditions

R407C

Cond. temp. in °C (tc)	Evaporating temperature in °C (to)							
	-20	-15	-10	-5	0	5	10	15

Cooling capacity in W

30	13 752	17 292	21 499	26 466	32 282	39 040	46 832	55 750	-
35	12 975	16 383	20 418	25 172	30 736	37 201	44 658	53 200	-
40	12 180	15 442	19 291	23 819	29 116	35 273	42 381	50 532	-
45	-	14 473	18 123	22 411	27 428	33 263	40 007	47 753	-
50	-	-	16 919	20 953	25 674	31 173	37 540	44 864	-
55	-	-	-	19 448	23 860	29 008	34 981	41 870	-
60	-	-	-	-	21 988	26 769	32 333	38 768	-
65	-	-	-	-	20 055	24 454	29 591	35 555	-

Power input in W

30	5 566	5 533	5 578	5 681	5 823	5 983	6 143	6 283	-
35	6 374	6 287	6 290	6 365	6 490	6 648	6 818	6 981	-
40	7 270	7 117	7 067	7 102	7 201	7 345	7 514	7 689	-
45	-	8 061	7 948	7 932	7 993	8 112	8 269	8 444	-
50	-	-	8 971	8 893	8 905	8 988	9 122	9 287	-
55	-	-	-	10 024	9 977	10 012	10 112	10 257	-
60	-	-	-	-	11 246	11 224	11 279	11 391	-
65	-	-	-	-	12 753	12 662	12 660	12 729	-

Current consumption in A

30	13.26	13.34	13.44	13.56	13.69	13.84	14.01	14.20	-
35	13.94	14.00	14.07	14.17	14.28	14.41	14.55	14.72	-
40	14.75	14.79	14.85	14.92	15.01	15.11	15.24	15.39	-
45	-	15.75	15.78	15.83	15.90	15.99	16.10	16.22	-
50	-	-	16.90	16.94	16.99	17.06	17.14	17.25	-
55	-	-	-	18.26	18.29	18.34	18.41	18.50	-
60	-	-	-	-	19.83	19.86	19.92	19.99	-
65	-	-	-	-	21.64	21.66	21.69	21.75	-

Mass flow in kg/h

30	289	358	438	531	638	760	900	1 058	-
35	286	356	436	528	635	757	896	1 054	-
40	283	352	432	525	631	753	891	1 048	-
45	-	349	429	520	626	747	884	1 040	-
50	-	-	424	515	620	740	876	1 031	-
55	-	-	-	509	613	732	867	1 020	-
60	-	-	-	-	605	723	856	1 008	-
65	-	-	-	-	597	712	845	995	-

Coefficient of performance (C.O.P.)

30	2.47	3.13	3.85	4.66	5.54	6.52	7.62	8.87	-
35	2.04	2.61	3.25	3.96	4.74	5.60	6.55	7.62	-
40	1.68	2.17	2.73	3.35	4.04	4.80	5.64	6.57	-
45	-	1.80	2.28	2.83	3.43	4.10	4.84	5.66	-
50	-	-	1.89	2.36	2.88	3.47	4.12	4.83	-
55	-	-	-	1.94	2.39	2.90	3.46	4.08	-
60	-	-	-	-	1.96	2.38	2.87	3.40	-
65	-	-	-	-	1.57	1.93	2.34	2.79	-

Nominal performance at to = 5 °C, tc = 50 °C

Cooling capacity	31 173	W
Power input	8 988	W
Current consumption	17.06	A
Mass flow	740	kg/h
C.O.P.	3.47	

Pressure switch settings

Maximum HP switch setting	29.5	bar(g)
Minimum LP switch setting	0.5	bar(g)
LP pump down setting	1	bar(g)

Sound power data

Sound power level	77	dB(A)
With acoustic hood	69	dB(A)

to: Evaporating temperature at dew point

tc: Condensing temperature at dew point

Rating conditions : Superheat = 10 K, Subcooling = 0 K

Tolerance according EN12900

Danfoss can accept no responsibility for possible errors in catalogues, brochures and other printed material. Danfoss reserves the right to alter its products without notice. This also applies to products already on order provided that such alternations can be made without subsequential changes being necessary in specifications already agreed. All trademarks in this material are property of the respective companies. Danfoss and the Danfoss logotype are trademarks of Danfoss A/S. All rights reserved.

Performance data at 50 Hz, ARI rating conditions
R407C

Cond. temp. in °C (tc)	Evaporating temperature in °C (to)							
	-20	-15	-10	-5	0	5	10	15

Cooling capacity in W

30	14 749	18 525	23 006	28 290	34 472	41 648	49 913	59 363	-
35	13 984	17 634	21 951	27 029	32 966	39 856	47 796	56 881	-
40	13 201	16 712	20 849	25 709	31 386	37 977	45 578	54 284	-
45	-	15 764	19 708	24 335	29 740	36 018	43 266	51 578	-
50	-	-	18 533	22 914	28 032	33 983	40 864	48 771	-
55	-	-	-	21 451	26 268	31 880	38 381	45 866	-
60	-	-	-	-	24 456	29 713	35 820	42 871	-
65	-	-	-	-	22 600	27 489	33 188	39 792	-

Power input in W

30	5 566	5 533	5 578	5 681	5 823	5 983	6 143	6 283	-
35	6 374	6 287	6 290	6 365	6 490	6 648	6 818	6 981	-
40	7 270	7 117	7 067	7 102	7 201	7 345	7 514	7 689	-
45	-	8 061	7 948	7 932	7 993	8 112	8 269	8 444	-
50	-	-	8 971	8 893	8 905	8 988	9 122	9 287	-
55	-	-	-	10 024	9 977	10 012	10 112	10 257	-
60	-	-	-	-	11 246	11 224	11 279	11 391	-
65	-	-	-	-	12 753	12 662	12 660	12 729	-

Current consumption in A

30	13.26	13.34	13.44	13.56	13.69	13.84	14.01	14.20	-
35	13.94	14.00	14.07	14.17	14.28	14.41	14.55	14.72	-
40	14.75	14.79	14.85	14.92	15.01	15.11	15.24	15.39	-
45	-	15.75	15.78	15.83	15.90	15.99	16.10	16.22	-
50	-	-	16.90	16.94	16.99	17.06	17.14	17.25	-
55	-	-	-	18.26	18.29	18.34	18.41	18.50	-
60	-	-	-	-	19.83	19.86	19.92	19.99	-
65	-	-	-	-	21.64	21.66	21.69	21.75	-

Mass flow in kg/h

30	288	356	436	528	634	756	895	1 052	-
35	285	354	433	526	631	753	891	1 047	-
40	282	351	430	522	627	748	886	1 042	-
45	-	347	426	518	622	742	879	1 034	-
50	-	-	422	512	616	736	871	1 025	-
55	-	-	-	506	609	727	862	1 014	-
60	-	-	-	-	602	718	851	1 002	-
65	-	-	-	-	593	708	840	989	-

Coefficient of performance (C.O.P.)

30	2.65	3.35	4.12	4.98	5.92	6.96	8.12	9.45	-
35	2.19	2.80	3.49	4.25	5.08	6.00	7.01	8.15	-
40	1.82	2.35	2.95	3.62	4.36	5.17	6.07	7.06	-
45	-	1.96	2.48	3.07	3.72	4.44	5.23	6.11	-
50	-	-	2.07	2.58	3.15	3.78	4.48	5.25	-
55	-	-	-	2.14	2.63	3.18	3.80	4.47	-
60	-	-	-	-	2.17	2.65	3.18	3.76	-
65	-	-	-	-	1.77	2.17	2.62	3.13	-

Nominal performance at to = 7.2 °C, tc = 54.4 °C

Cooling capacity	34 901	W
Power input	9 920	W
Current consumption	18.20	A
Mass flow	786	kg/h
C.O.P.	3.52	

Pressure switch settings

Maximum HP switch setting	29.5	bar(g)
Minimum LP switch setting	0.5	bar(g)
LP pump down setting	1	bar(g)

Sound power data

Sound power level	77	dB(A)
With acoustic hood	69	dB(A)

to: Evaporating temperature at dew point

tc: Condensing temperature at dew point

Rating conditions : Superheat = 11.1 K , Subcooling = 8.3 K

Tolerance according EN12900

Danfoss can accept no responsibility for possible errors in catalogues, brochures and other printed material. Danfoss reserves the right to alter its products without notice. This also applies to products already on order provided that such alternations can be made without subsequential changes being necessary in specifications already agreed. All trademarks in this material are property of the respective companies. Danfoss and the Danfoss logotype are trademarks of Danfoss A/S. All rights reserved.

Performance data at 60 Hz, EN 12900 rating conditions

R407C

Cond. temp. in °C (tc)	Evaporating temperature in °C (to)							
	-20	-15	-10	-5	0	5	10	15

Cooling capacity in W

30	16 780	20 907	25 805	31 580	38 340	46 191	55 241	65 598	-
35	15 948	19 966	24 718	30 309	36 845	44 434	53 182	63 197	-
40	15 039	18 918	23 491	28 866	35 147	42 441	50 855	60 495	-
45	-	17 778	22 142	27 269	33 262	40 230	48 276	57 509	-
50	-	-	20 687	25 533	31 208	37 815	45 462	54 253	-
55	-	-	-	23 675	28 998	35 213	42 426	50 741	-
60	-	-	-	-	26 647	32 436	39 181	46 986	-
65	-	-	-	-	24 165	29 495	35 736	42 993	-

Power input in W

30	6 734	6 837	6 969	7 133	7 331	7 568	7 845	8 166	-
35	7 508	7 592	7 706	7 852	8 034	8 254	8 516	8 821	-
40	8 393	8 454	8 545	8 670	8 830	9 029	9 270	9 556	-
45	-	9 446	9 510	9 608	9 742	9 915	10 131	10 393	-
50	-	-	10 624	10 690	10 794	10 937	11 123	11 356	-
55	-	-	-	11 941	12 009	12 118	12 270	12 468	-
60	-	-	-	-	13 411	13 480	13 594	13 754	-
65	-	-	-	-	15 024	15 049	15 119	15 236	-

Current consumption in A

30	12.40	12.57	12.72	12.87	13.09	13.43	13.94	14.66	-
35	13.10	13.30	13.44	13.56	13.72	13.98	14.37	14.95	-
40	13.90	14.15	14.30	14.42	14.54	14.73	15.03	15.49	-
45	-	15.12	15.31	15.44	15.55	15.69	15.92	16.28	-
50	-	-	16.46	16.63	16.74	16.87	17.05	17.33	-
55	-	-	-	17.98	18.13	18.25	18.40	18.63	-
60	-	-	-	-	19.69	19.84	19.99	20.19	-
65	-	-	-	-	21.45	21.64	21.81	22.00	-

Mass flow in kg/h

30	353	433	526	634	758	900	1 061	1 245	-
35	352	433	527	636	761	904	1 067	1 252	-
40	350	432	527	636	762	906	1 069	1 255	-
45	-	429	524	633	759	903	1 067	1 253	-
50	-	-	518	628	753	897	1 061	1 247	-
55	-	-	-	620	745	888	1 051	1 237	-
60	-	-	-	-	733	875	1 038	1 222	-
65	-	-	-	-	719	859	1 020	1 203	-

Coefficient of performance (C.O.P.)

30	2.49	3.06	3.70	4.43	5.23	6.10	7.04	8.03	-
35	2.12	2.63	3.21	3.86	4.59	5.38	6.25	7.16	-
40	1.79	2.24	2.75	3.33	3.98	4.70	5.49	6.33	-
45	-	1.88	2.33	2.84	3.41	4.06	4.77	5.53	-
50	-	-	1.95	2.39	2.89	3.46	4.09	4.78	-
55	-	-	-	1.98	2.41	2.91	3.46	4.07	-
60	-	-	-	-	1.99	2.41	2.88	3.42	-
65	-	-	-	-	1.61	1.96	2.36	2.82	-

Nominal performance at to = 5 °C, tc = 50 °C

Cooling capacity	37 815	W
Power input	10 937	W
Current consumption	16.87	A
Mass flow	897	kg/h
C.O.P.	3.46	

Pressure switch settings

Maximum HP switch setting	29.5	bar(g)
Minimum LP switch setting	0.5	bar(g)
LP pump down setting	1	bar(g)

Sound power data

Sound power level	81	dB(A)
With acoustic hood	73	dB(A)

to: Evaporating temperature at dew point

tc: Condensing temperature at dew point

Rating conditions : Superheat = 10 K , Subcooling = 0 K

Tolerance according EN12900

Danfoss can accept no responsibility for possible errors in catalogues, brochures and other printed material. Danfoss reserves the right to alter its products without notice. This also applies to products already on order provided that such alternations can be made without subsequential changes being necessary in specifications already agreed. All trademarks in this material are property of the respective companies. Danfoss and the Danfoss logotype are trademarks of Danfoss A/S. All rights reserved.

Performance data at 60 Hz, ARI rating conditions
R407C

Cond. temp. in °C (tc)	Evaporating temperature in °C (to)							
	-20	-15	-10	-5	0	5	10	15

Cooling capacity in W

30	17 997	22 397	27 614	33 758	40 941	49 276	58 875	69 848	-
35	17 188	21 491	26 572	32 544	39 518	47 606	56 919	67 570	-
40	16 300	20 474	25 388	31 156	37 887	45 695	54 691	64 986	-
45	-	19 363	24 079	29 609	36 066	43 562	52 208	62 116	-
50	-	-	22 661	27 923	34 073	41 224	49 488	58 977	-
55	-	-	-	26 113	31 924	38 699	46 549	55 585	-
60	-	-	-	-	29 638	36 004	43 407	51 959	-
65	-	-	-	-	27 232	33 156	40 080	48 116	-

Power input in W

30	6 734	6 837	6 969	7 133	7 331	7 568	7 845	8 166	-
35	7 508	7 592	7 706	7 852	8 034	8 254	8 516	8 821	-
40	8 393	8 454	8 545	8 670	8 830	9 029	9 270	9 556	-
45	-	9 446	9 510	9 608	9 742	9 915	10 131	10 393	-
50	-	-	10 624	10 690	10 794	10 937	11 123	11 356	-
55	-	-	-	11 941	12 009	12 118	12 270	12 468	-
60	-	-	-	-	13 411	13 480	13 594	13 754	-
65	-	-	-	-	15 024	15 049	15 119	15 236	-

Current consumption in A

30	12.40	12.57	12.72	12.87	13.09	13.43	13.94	14.66	-
35	13.10	13.30	13.44	13.56	13.72	13.98	14.37	14.95	-
40	13.90	14.15	14.30	14.42	14.54	14.73	15.03	15.49	-
45	-	15.12	15.31	15.44	15.55	15.69	15.92	16.28	-
50	-	-	16.46	16.63	16.74	16.87	17.05	17.33	-
55	-	-	-	17.98	18.13	18.25	18.40	18.63	-
60	-	-	-	-	19.69	19.84	19.99	20.19	-
65	-	-	-	-	21.45	21.64	21.81	22.00	-

Mass flow in kg/h

30	351	431	523	630	753	894	1 055	1 237	-
35	350	431	525	633	757	899	1 061	1 244	-
40	348	430	524	632	757	900	1 063	1 247	-
45	-	426	521	630	755	898	1 061	1 245	-
50	-	-	516	624	749	892	1 055	1 239	-
55	-	-	-	616	741	883	1 045	1 229	-
60	-	-	-	-	729	870	1 032	1 214	-
65	-	-	-	-	715	854	1 014	1 195	-

Coefficient of performance (C.O.P.)

30	2.67	3.28	3.96	4.73	5.58	6.51	7.50	8.55	-
35	2.29	2.83	3.45	4.14	4.92	5.77	6.68	7.66	-
40	1.94	2.42	2.97	3.59	4.29	5.06	5.90	6.80	-
45	-	2.05	2.53	3.08	3.70	4.39	5.15	5.98	-
50	-	-	2.13	2.61	3.16	3.77	4.45	5.19	-
55	-	-	-	2.19	2.66	3.19	3.79	4.46	-
60	-	-	-	-	2.21	2.67	3.19	3.78	-
65	-	-	-	-	1.81	2.20	2.65	3.16	-

Nominal performance at to = 7.2 °C, tc = 54.4 °C

Cooling capacity	42 348	W
Power input	12 030	W
Current consumption	18.13	A
Mass flow	953	kg/h
C.O.P.	3.52	

Pressure switch settings

Maximum HP switch setting	29.5	bar(g)
Minimum LP switch setting	0.5	bar(g)
LP pump down setting	1	bar(g)

Sound power data

Sound power level	81	dB(A)
With acoustic hood	73	dB(A)

to: Evaporating temperature at dew point

tc: Condensing temperature at dew point

Rating conditions : Superheat = 11.1 K , Subcooling = 8.3 K

Tolerance according EN12900

Danfoss can accept no responsibility for possible errors in catalogues, brochures and other printed material. Danfoss reserves the right to alter its products without notice. This also applies to products already on order provided that such alternations can be made without subsequential changes being necessary in specifications already agreed. All trademarks in this material are property of the respective companies. Danfoss and the Danfoss logotype are trademarks of Danfoss A/S. All rights reserved.

Performance data at 60 Hz, EN 12900 rating conditions
R134a

Cond. temp. in °C (tc)	Evaporating temperature in °C (to)							
	-15	-10	-5	0	5	10	15	

Cooling capacity in W

35	12 352	15 545	19 393	23 997	29 456	35 872	43 346	-	-
40	11 654	14 712	18 383	22 767	27 963	34 072	41 194	-	-
45	10 945	13 868	17 361	21 523	26 454	32 254	39 024	-	-
50	10 223	13 008	16 321	20 261	24 926	30 416	36 830	-	-
55	-	12 128	15 259	18 975	23 372	28 550	34 608	-	-
60	-	-	14 171	17 660	21 787	26 651	32 350	-	-
65	-	-	-	16 311	20 166	24 713	30 050	-	-
70	-	-	-	14 921	18 500	22 726	27 697	-	-

Power input in W

35	5 095	5 185	5 275	5 387	5 546	5 773	6 094	-	-
40	5 645	5 740	5 823	5 917	6 047	6 235	6 504	-	-
45	6 257	6 362	6 445	6 528	6 635	6 789	7 014	-	-
50	6 936	7 058	7 147	7 224	7 315	7 442	7 629	-	-
55	-	7 833	7 934	8 013	8 094	8 200	8 355	-	-
60	-	-	8 812	8 898	8 975	9 067	9 196	-	-
65	-	-	-	9 886	9 966	10 049	10 159	-	-
70	-	-	-	10 982	11 071	11 151	11 248	-	-

Current consumption in A

35	11.55	11.52	11.55	11.62	11.74	11.91	12.12	-	-
40	11.88	11.88	11.92	12.01	12.13	12.29	12.49	-	-
45	12.35	12.37	12.43	12.53	12.65	12.81	12.99	-	-
50	12.96	13.01	13.08	13.18	13.31	13.46	13.63	-	-
55	-	13.78	13.87	13.97	14.10	14.23	14.39	-	-
60	-	-	14.79	14.90	15.02	15.15	15.28	-	-
65	-	-	-	15.96	16.08	16.19	16.31	-	-
70	-	-	-	17.16	17.27	17.37	17.47	-	-

Mass flow in kg/h

35	299	369	452	547	658	786	933	-	-
40	297	368	450	545	655	782	928	-	-
45	296	366	448	543	652	778	923	-	-
50	294	364	446	540	649	774	918	-	-
55	-	362	443	537	645	770	912	-	-
60	-	-	440	533	641	765	906	-	-
65	-	-	-	529	637	760	900	-	-
70	-	-	-	525	632	754	893	-	-

Coefficient of performance (C.O.P.)

35	2.42	3.00	3.68	4.45	5.31	6.21	7.11	-	-
40	2.06	2.56	3.16	3.85	4.62	5.46	6.33	-	-
45	1.75	2.18	2.69	3.30	3.99	4.75	5.56	-	-
50	1.47	1.84	2.28	2.80	3.41	4.09	4.83	-	-
55	-	1.55	1.92	2.37	2.89	3.48	4.14	-	-
60	-	-	1.61	1.98	2.43	2.94	3.52	-	-
65	-	-	-	1.65	2.02	2.46	2.96	-	-
70	-	-	-	1.36	1.67	2.04	2.46	-	-

Nominal performance at to = 5 °C, tc = 50 °C

Cooling capacity	24 926	W
Power input	7 315	W
Current consumption	13.31	A
Mass flow	649	kg/h
C.O.P.	3.41	

Pressure switch settings

Maximum HP switch setting	22.8	bar(g)
Minimum LP switch setting	0.9	bar(g)
LP pump down setting	0.9	bar(g)

Sound power data

Sound power level	82.5	dB(A)
With acoustic hood	73.5	dB(A)

to: Evaporating temperature at dew point

tc: Condensing temperature at dew point

Rating conditions : Superheat = 10 K , Subcooling = 0 K

Tolerance according EN12900

Danfoss can accept no responsibility for possible errors in catalogues, brochures and other printed material. Danfoss reserves the right to alter its products without notice. This also applies to products already on order provided that such alternations can be made without subsequential changes being necessary in specifications already agreed. All trademarks in this material are property of the respective companies. Danfoss and the Danfoss logotype are trademarks of Danfoss A/S. All rights reserved.

Performance data at 60 Hz, ARI rating conditions

R134a

Cond. temp. in °C (tc)	Evaporating temperature in °C (to)							
	-15	-10	-5	0	5	10	15	

Cooling capacity in W

35	13 378	16 808	20 935	25 864	31 702	38 552	46 519	-	-
40	12 691	15 991	19 945	24 659	30 237	36 784	44 405	-	-
45	11 994	15 163	18 944	23 441	28 759	35 002	42 277	-	-
50	11 282	14 321	17 928	22 207	27 263	33 203	40 129	-	-
55	-	13 460	16 892	20 952	25 747	31 381	37 959	-	-
60	-	-	15 832	19 674	24 206	29 534	35 762	-	-
65	-	-	-	18 367	22 635	27 656	33 535	-	-
70	-	-	-	17 028	21 032	25 745	31 273	-	-

Power input in W

35	5 095	5 185	5 275	5 387	5 546	5 773	6 094	-	-
40	5 645	5 740	5 823	5 917	6 047	6 235	6 504	-	-
45	6 257	6 362	6 445	6 528	6 635	6 789	7 014	-	-
50	6 936	7 058	7 147	7 224	7 315	7 442	7 629	-	-
55	-	7 833	7 934	8 013	8 094	8 200	8 355	-	-
60	-	-	8 812	8 898	8 975	9 067	9 196	-	-
65	-	-	-	9 886	9 966	10 049	10 159	-	-
70	-	-	-	10 982	11 071	11 151	11 248	-	-

Current consumption in A

35	11.55	11.52	11.55	11.62	11.74	11.91	12.12	-	-
40	11.88	11.88	11.92	12.01	12.13	12.29	12.49	-	-
45	12.35	12.37	12.43	12.53	12.65	12.81	12.99	-	-
50	12.96	13.01	13.08	13.18	13.31	13.46	13.63	-	-
55	-	13.78	13.87	13.97	14.10	14.23	14.39	-	-
60	-	-	14.79	14.90	15.02	15.15	15.28	-	-
65	-	-	-	15.96	16.08	16.19	16.31	-	-
70	-	-	-	17.16	17.27	17.37	17.47	-	-

Mass flow in kg/h

35	297	367	449	545	655	782	928	-	-
40	296	366	447	542	652	778	923	-	-
45	294	364	446	540	649	774	918	-	-
50	292	362	443	537	646	770	913	-	-
55	-	360	441	534	642	766	907	-	-
60	-	-	438	531	638	761	901	-	-
65	-	-	-	527	633	756	895	-	-
70	-	-	-	522	628	750	888	-	-

Coefficient of performance (C.O.P.)

35	2.63	3.24	3.97	4.80	5.72	6.68	7.63	-	-
40	2.25	2.79	3.43	4.17	5.00	5.90	6.83	-	-
45	1.92	2.38	2.94	3.59	4.33	5.16	6.03	-	-
50	1.63	2.03	2.51	3.07	3.73	4.46	5.26	-	-
55	-	1.72	2.13	2.61	3.18	3.83	4.54	-	-
60	-	-	1.80	2.21	2.70	3.26	3.89	-	-
65	-	-	-	1.86	2.27	2.75	3.30	-	-
70	-	-	-	1.55	1.90	2.31	2.78	-	-

Nominal performance at to = 7.2 °C, tc = 54.4 °C

Cooling capacity	28 315	W
Power input	8 038	W
Current consumption	14.05	A
Mass flow	695	kg/h
C.O.P.	3.52	

Pressure switch settings

Maximum HP switch setting	22.8	bar(g)
Minimum LP switch setting	0.9	bar(g)
LP pump down setting	0.9	bar(g)

Sound power data

Sound power level	82.5	dB(A)
With acoustic hood	73.5	dB(A)

to: Evaporating temperature at dew point

tc: Condensing temperature at dew point

Rating conditions : Superheat = 11.1 K , Subcooling = 8.3 K

Tolerance according EN12900

Danfoss can accept no responsibility for possible errors in catalogues, brochures and other printed material. Danfoss reserves the right to alter its products without notice. This also applies to products already on order provided that such alternations can be made without subsequential changes being necessary in specifications already agreed. All trademarks in this material are property of the respective companies. Danfoss and the Danfoss logotype are trademarks of Danfoss A/S. All rights reserved.

Performance data at 60 Hz, EN 12900 rating conditions
R134a

Cond. temp. in °C (tc)	Evaporating temperature in °C (to)							
	-15	-10	-5	0	5	10	15	

Cooling capacity in W

35	12 352	15 545	19 393	23 997	29 456	35 872	43 346	-	-
40	11 654	14 712	18 383	22 767	27 963	34 072	41 194	-	-
45	10 945	13 868	17 361	21 523	26 454	32 254	39 024	-	-
50	10 223	13 008	16 321	20 261	24 926	30 416	36 830	-	-
55	-	12 128	15 259	18 975	23 372	28 550	34 608	-	-
60	-	-	14 171	17 660	21 787	26 651	32 350	-	-
65	-	-	-	16 311	20 166	24 713	30 050	-	-
70	-	-	-	14 921	18 500	22 726	27 697	-	-

Power input in W

35	5 095	5 185	5 275	5 387	5 546	5 773	6 094	-	-
40	5 645	5 740	5 823	5 917	6 047	6 235	6 504	-	-
45	6 257	6 362	6 445	6 528	6 635	6 789	7 014	-	-
50	6 936	7 058	7 147	7 224	7 315	7 442	7 629	-	-
55	-	7 833	7 934	8 013	8 094	8 200	8 355	-	-
60	-	-	8 812	8 898	8 975	9 067	9 196	-	-
65	-	-	-	9 886	9 966	10 049	10 159	-	-
70	-	-	-	10 982	11 071	11 151	11 248	-	-

Current consumption in A

35	11.55	11.52	11.55	11.62	11.74	11.91	12.12	-	-
40	11.88	11.88	11.92	12.01	12.13	12.29	12.49	-	-
45	12.35	12.37	12.43	12.53	12.65	12.81	12.99	-	-
50	12.96	13.01	13.08	13.18	13.31	13.46	13.63	-	-
55	-	13.78	13.87	13.97	14.10	14.23	14.39	-	-
60	-	-	14.79	14.90	15.02	15.15	15.28	-	-
65	-	-	-	15.96	16.08	16.19	16.31	-	-
70	-	-	-	17.16	17.27	17.37	17.47	-	-

Mass flow in kg/h

35	299	369	452	547	658	786	933	-	-
40	297	368	450	545	655	782	928	-	-
45	296	366	448	543	652	778	923	-	-
50	294	364	446	540	649	774	918	-	-
55	-	362	443	537	645	770	912	-	-
60	-	-	440	533	641	765	906	-	-
65	-	-	-	529	637	760	900	-	-
70	-	-	-	525	632	754	893	-	-

Coefficient of performance (C.O.P.)

35	2.42	3.00	3.68	4.45	5.31	6.21	7.11	-	-
40	2.06	2.56	3.16	3.85	4.62	5.46	6.33	-	-
45	1.75	2.18	2.69	3.30	3.99	4.75	5.56	-	-
50	1.47	1.84	2.28	2.80	3.41	4.09	4.83	-	-
55	-	1.55	1.92	2.37	2.89	3.48	4.14	-	-
60	-	-	1.61	1.98	2.43	2.94	3.52	-	-
65	-	-	-	1.65	2.02	2.46	2.96	-	-
70	-	-	-	1.36	1.67	2.04	2.46	-	-

Nominal performance at to = 5 °C, tc = 50 °C

Cooling capacity	24 926	W
Power input	7 315	W
Current consumption	13.31	A
Mass flow	649	kg/h
C.O.P.	3.41	

Pressure switch settings

Maximum HP switch setting	22.8	bar(g)
Minimum LP switch setting	0.9	bar(g)
LP pump down setting	0.9	bar(g)

Sound power data

Sound power level	82.5	dB(A)
With acoustic hood	73.5	dB(A)

to: Evaporating temperature at dew point

tc: Condensing temperature at dew point

Rating conditions : Superheat = 10 K , Subcooling = 0 K

Tolerance according EN12900

Danfoss can accept no responsibility for possible errors in catalogues, brochures and other printed material. Danfoss reserves the right to alter its products without notice. This also applies to products already on order provided that such alternations can be made without subsequential changes being necessary in specifications already agreed. All trademarks in this material are property of the respective companies. Danfoss and the Danfoss logotype are trademarks of Danfoss A/S. All rights reserved.

Performance data at 60 Hz, ARI rating conditions

R134a

Cond. temp. in °C (tc)	Evaporating temperature in °C (to)							
	-15	-10	-5	0	5	10	15	

Cooling capacity in W

35	13 378	16 808	20 935	25 864	31 702	38 552	46 519	-	-
40	12 691	15 991	19 945	24 659	30 237	36 784	44 405	-	-
45	11 994	15 163	18 944	23 441	28 759	35 002	42 277	-	-
50	11 282	14 321	17 928	22 207	27 263	33 203	40 129	-	-
55	-	13 460	16 892	20 952	25 747	31 381	37 959	-	-
60	-	-	15 832	19 674	24 206	29 534	35 762	-	-
65	-	-	-	18 367	22 635	27 656	33 535	-	-
70	-	-	-	17 028	21 032	25 745	31 273	-	-

Power input in W

35	5 095	5 185	5 275	5 387	5 546	5 773	6 094	-	-
40	5 645	5 740	5 823	5 917	6 047	6 235	6 504	-	-
45	6 257	6 362	6 445	6 528	6 635	6 789	7 014	-	-
50	6 936	7 058	7 147	7 224	7 315	7 442	7 629	-	-
55	-	7 833	7 934	8 013	8 094	8 200	8 355	-	-
60	-	-	8 812	8 898	8 975	9 067	9 196	-	-
65	-	-	-	9 886	9 966	10 049	10 159	-	-
70	-	-	-	10 982	11 071	11 151	11 248	-	-

Current consumption in A

35	11.55	11.52	11.55	11.62	11.74	11.91	12.12	-	-
40	11.88	11.88	11.92	12.01	12.13	12.29	12.49	-	-
45	12.35	12.37	12.43	12.53	12.65	12.81	12.99	-	-
50	12.96	13.01	13.08	13.18	13.31	13.46	13.63	-	-
55	-	13.78	13.87	13.97	14.10	14.23	14.39	-	-
60	-	-	14.79	14.90	15.02	15.15	15.28	-	-
65	-	-	-	15.96	16.08	16.19	16.31	-	-
70	-	-	-	17.16	17.27	17.37	17.47	-	-

Mass flow in kg/h

35	297	367	449	545	655	782	928	-	-
40	296	366	447	542	652	778	923	-	-
45	294	364	446	540	649	774	918	-	-
50	292	362	443	537	646	770	913	-	-
55	-	360	441	534	642	766	907	-	-
60	-	-	438	531	638	761	901	-	-
65	-	-	-	527	633	756	895	-	-
70	-	-	-	522	628	750	888	-	-

Coefficient of performance (C.O.P.)

35	2.63	3.24	3.97	4.80	5.72	6.68	7.63	-	-
40	2.25	2.79	3.43	4.17	5.00	5.90	6.83	-	-
45	1.92	2.38	2.94	3.59	4.33	5.16	6.03	-	-
50	1.63	2.03	2.51	3.07	3.73	4.46	5.26	-	-
55	-	1.72	2.13	2.61	3.18	3.83	4.54	-	-
60	-	-	1.80	2.21	2.70	3.26	3.89	-	-
65	-	-	-	1.86	2.27	2.75	3.30	-	-
70	-	-	-	1.55	1.90	2.31	2.78	-	-

Nominal performance at to = 7.2 °C, tc = 54.4 °C

Cooling capacity	28 315	W
Power input	8 038	W
Current consumption	14.05	A
Mass flow	695	kg/h
C.O.P.	3.52	

Pressure switch settings

Maximum HP switch setting	22.8	bar(g)
Minimum LP switch setting	0.9	bar(g)
LP pump down setting	0.9	bar(g)

Sound power data

Sound power level	82.5	dB(A)
With acoustic hood	73.5	dB(A)

to: Evaporating temperature at dew point

tc: Condensing temperature at dew point

Rating conditions : Superheat = 11.1 K , Subcooling = 8.3 K

Tolerance according EN12900

Danfoss can accept no responsibility for possible errors in catalogues, brochures and other printed material. Danfoss reserves the right to alter its products without notice. This also applies to products already on order provided that such alternations can be made without subsequential changes being necessary in specifications already agreed. All trademarks in this material are property of the respective companies. Danfoss and the Danfoss logotype are trademarks of Danfoss A/S. All rights reserved.

Performance data at 60 Hz, EN 12900 rating conditions

R407C

Cond. temp. in °C (tc)	Evaporating temperature in °C (to)							
	-20	-15	-10	-5	0	5	10	15

Cooling capacity in W

30	16 780	20 907	25 805	31 580	38 340	46 191	55 241	65 598	-
35	15 948	19 966	24 718	30 309	36 845	44 434	53 182	63 197	-
40	15 039	18 918	23 491	28 866	35 147	42 441	50 855	60 495	-
45	-	17 778	22 142	27 269	33 262	40 230	48 276	57 509	-
50	-	-	20 687	25 533	31 208	37 815	45 462	54 253	-
55	-	-	-	23 675	28 998	35 213	42 426	50 741	-
60	-	-	-	-	26 647	32 436	39 181	46 986	-
65	-	-	-	-	24 165	29 495	35 736	42 993	-

Power input in W

30	6 734	6 837	6 969	7 133	7 331	7 568	7 845	8 166	-
35	7 508	7 592	7 706	7 852	8 034	8 254	8 516	8 821	-
40	8 393	8 454	8 545	8 670	8 830	9 029	9 270	9 556	-
45	-	9 446	9 510	9 608	9 742	9 915	10 131	10 393	-
50	-	-	10 624	10 690	10 794	10 937	11 123	11 356	-
55	-	-	-	11 941	12 009	12 118	12 270	12 468	-
60	-	-	-	-	13 411	13 480	13 594	13 754	-
65	-	-	-	-	15 024	15 049	15 119	15 236	-

Current consumption in A

30	12.40	12.57	12.72	12.87	13.09	13.43	13.94	14.66	-
35	13.10	13.30	13.44	13.56	13.72	13.98	14.37	14.95	-
40	13.90	14.15	14.30	14.42	14.54	14.73	15.03	15.49	-
45	-	15.12	15.31	15.44	15.55	15.69	15.92	16.28	-
50	-	-	16.46	16.63	16.74	16.87	17.05	17.33	-
55	-	-	-	17.98	18.13	18.25	18.40	18.63	-
60	-	-	-	-	19.69	19.84	19.99	20.19	-
65	-	-	-	-	21.45	21.64	21.81	22.00	-

Mass flow in kg/h

30	353	433	526	634	758	900	1 061	1 245	-
35	352	433	527	636	761	904	1 067	1 252	-
40	350	432	527	636	762	906	1 069	1 255	-
45	-	429	524	633	759	903	1 067	1 253	-
50	-	-	518	628	753	897	1 061	1 247	-
55	-	-	-	620	745	888	1 051	1 237	-
60	-	-	-	-	733	875	1 038	1 222	-
65	-	-	-	-	719	859	1 020	1 203	-

Coefficient of performance (C.O.P.)

30	2.49	3.06	3.70	4.43	5.23	6.10	7.04	8.03	-
35	2.12	2.63	3.21	3.86	4.59	5.38	6.25	7.16	-
40	1.79	2.24	2.75	3.33	3.98	4.70	5.49	6.33	-
45	-	1.88	2.33	2.84	3.41	4.06	4.77	5.53	-
50	-	-	1.95	2.39	2.89	3.46	4.09	4.78	-
55	-	-	-	1.98	2.41	2.91	3.46	4.07	-
60	-	-	-	-	1.99	2.41	2.88	3.42	-
65	-	-	-	-	1.61	1.96	2.36	2.82	-

Nominal performance at to = 5 °C, tc = 50 °C

Cooling capacity	37 815	W
Power input	10 937	W
Current consumption	16.87	A
Mass flow	897	kg/h
C.O.P.	3.46	

Pressure switch settings

Maximum HP switch setting	29.5	bar(g)
Minimum LP switch setting	0.5	bar(g)
LP pump down setting	1	bar(g)

Sound power data

Sound power level	81	dB(A)
With acoustic hood	73	dB(A)

to: Evaporating temperature at dew point

tc: Condensing temperature at dew point

Rating conditions : Superheat = 10 K , Subcooling = 0 K

Tolerance according EN12900

Danfoss can accept no responsibility for possible errors in catalogues, brochures and other printed material. Danfoss reserves the right to alter its products without notice. This also applies to products already on order provided that such alternations can be made without subsequential changes being necessary in specifications already agreed. All trademarks in this material are property of the respective companies. Danfoss and the Danfoss logotype are trademarks of Danfoss A/S. All rights reserved.

Performance data at 60 Hz, ARI rating conditions
R407C

Cond. temp. in °C (tc)	Evaporating temperature in °C (to)							
	-20	-15	-10	-5	0	5	10	15

Cooling capacity in W

30	17 997	22 397	27 614	33 758	40 941	49 276	58 875	69 848	-
35	17 188	21 491	26 572	32 544	39 518	47 606	56 919	67 570	-
40	16 300	20 474	25 388	31 156	37 887	45 695	54 691	64 986	-
45	-	19 363	24 079	29 609	36 066	43 562	52 208	62 116	-
50	-	-	22 661	27 923	34 073	41 224	49 488	58 977	-
55	-	-	-	26 113	31 924	38 699	46 549	55 585	-
60	-	-	-	-	29 638	36 004	43 407	51 959	-
65	-	-	-	-	27 232	33 156	40 080	48 116	-

Power input in W

30	6 734	6 837	6 969	7 133	7 331	7 568	7 845	8 166	-
35	7 508	7 592	7 706	7 852	8 034	8 254	8 516	8 821	-
40	8 393	8 454	8 545	8 670	8 830	9 029	9 270	9 556	-
45	-	9 446	9 510	9 608	9 742	9 915	10 131	10 393	-
50	-	-	10 624	10 690	10 794	10 937	11 123	11 356	-
55	-	-	-	11 941	12 009	12 118	12 270	12 468	-
60	-	-	-	-	13 411	13 480	13 594	13 754	-
65	-	-	-	-	15 024	15 049	15 119	15 236	-

Current consumption in A

30	12.40	12.57	12.72	12.87	13.09	13.43	13.94	14.66	-
35	13.10	13.30	13.44	13.56	13.72	13.98	14.37	14.95	-
40	13.90	14.15	14.30	14.42	14.54	14.73	15.03	15.49	-
45	-	15.12	15.31	15.44	15.55	15.69	15.92	16.28	-
50	-	-	16.46	16.63	16.74	16.87	17.05	17.33	-
55	-	-	-	17.98	18.13	18.25	18.40	18.63	-
60	-	-	-	-	19.69	19.84	19.99	20.19	-
65	-	-	-	-	21.45	21.64	21.81	22.00	-

Mass flow in kg/h

30	351	431	523	630	753	894	1 055	1 237	-
35	350	431	525	633	757	899	1 061	1 244	-
40	348	430	524	632	757	900	1 063	1 247	-
45	-	426	521	630	755	898	1 061	1 245	-
50	-	-	516	624	749	892	1 055	1 239	-
55	-	-	-	616	741	883	1 045	1 229	-
60	-	-	-	-	729	870	1 032	1 214	-
65	-	-	-	-	715	854	1 014	1 195	-

Coefficient of performance (C.O.P.)

30	2.67	3.28	3.96	4.73	5.58	6.51	7.50	8.55	-
35	2.29	2.83	3.45	4.14	4.92	5.77	6.68	7.66	-
40	1.94	2.42	2.97	3.59	4.29	5.06	5.90	6.80	-
45	-	2.05	2.53	3.08	3.70	4.39	5.15	5.98	-
50	-	-	2.13	2.61	3.16	3.77	4.45	5.19	-
55	-	-	-	2.19	2.66	3.19	3.79	4.46	-
60	-	-	-	-	2.21	2.67	3.19	3.78	-
65	-	-	-	-	1.81	2.20	2.65	3.16	-

Nominal performance at to = 7.2 °C, tc = 54.4 °C

Cooling capacity	42 348	W
Power input	12 030	W
Current consumption	18.13	A
Mass flow	953	kg/h
C.O.P.	3.52	

Pressure switch settings

Maximum HP switch setting	29.5	bar(g)
Minimum LP switch setting	0.5	bar(g)
LP pump down setting	1	bar(g)

Sound power data

Sound power level	81	dB(A)
With acoustic hood	73	dB(A)

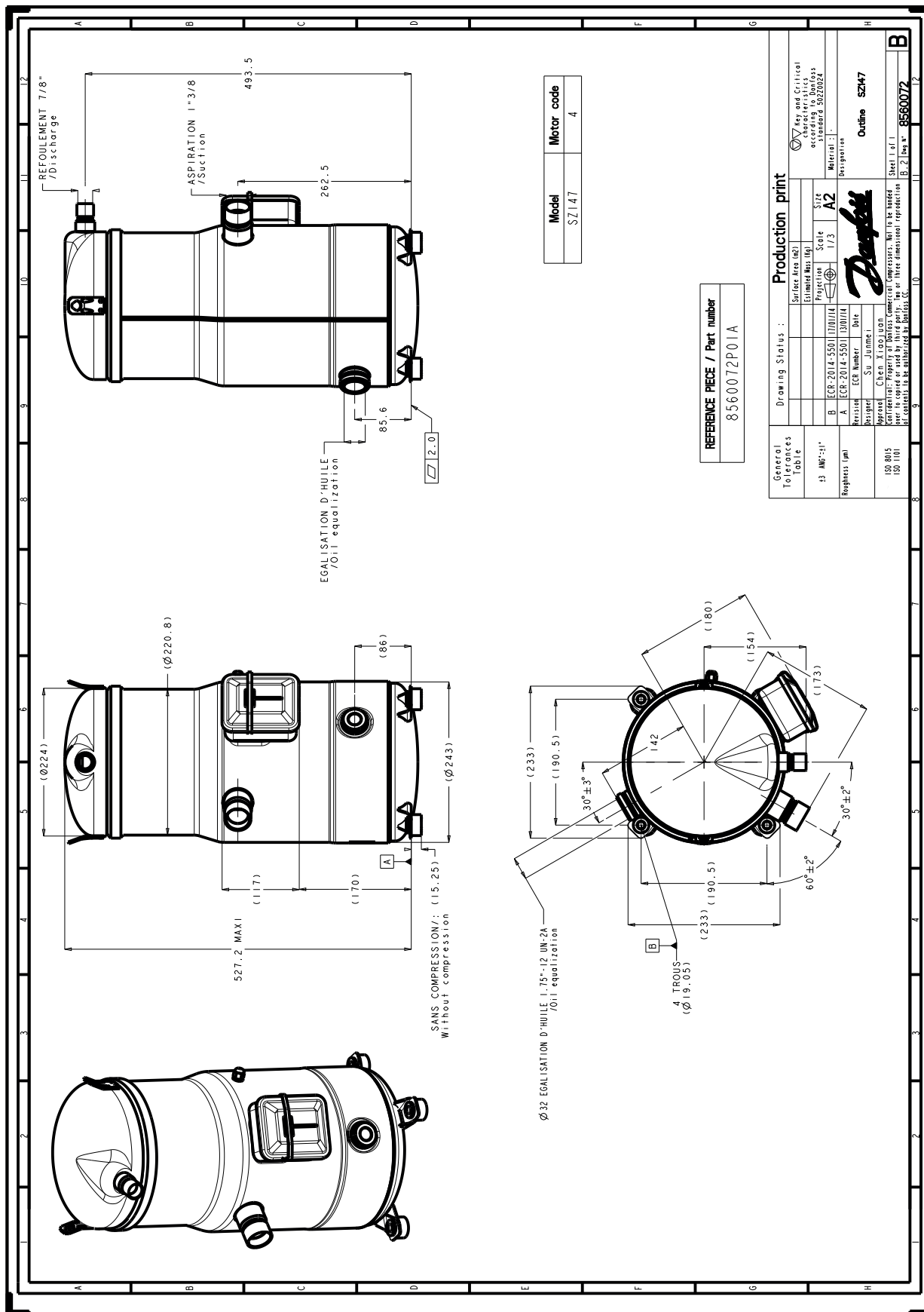
to: Evaporating temperature at dew point

tc: Condensing temperature at dew point

Rating conditions : Superheat = 11.1 K , Subcooling = 8.3 K

Tolerance according EN12900

Danfoss can accept no responsibility for possible errors in catalogues, brochures and other printed material. Danfoss reserves the right to alter its products without notice. This also applies to products already on order provided that such alternations can be made without subsequential changes being necessary in specifications already agreed. All trademarks in this material are property of the respective companies. Danfoss and the Danfoss logotype are trademarks of Danfoss A/S. All rights reserved.



Danfoss can accept no responsibility for possible errors in catalogues, brochures and other printed material. Danfoss reserves the right to alter its products without notice. This also applies to products already on order provided that such alternations can be made without consequential changes being necessary in specifications already agreed. All trademarks in this material are property of the respective companies. Danfoss, the Danfoss logotype and Maneurop are trademarks of Danfoss A/S. All rights reserved.